



ADARA

WELCOME ON BOARD

ADARA













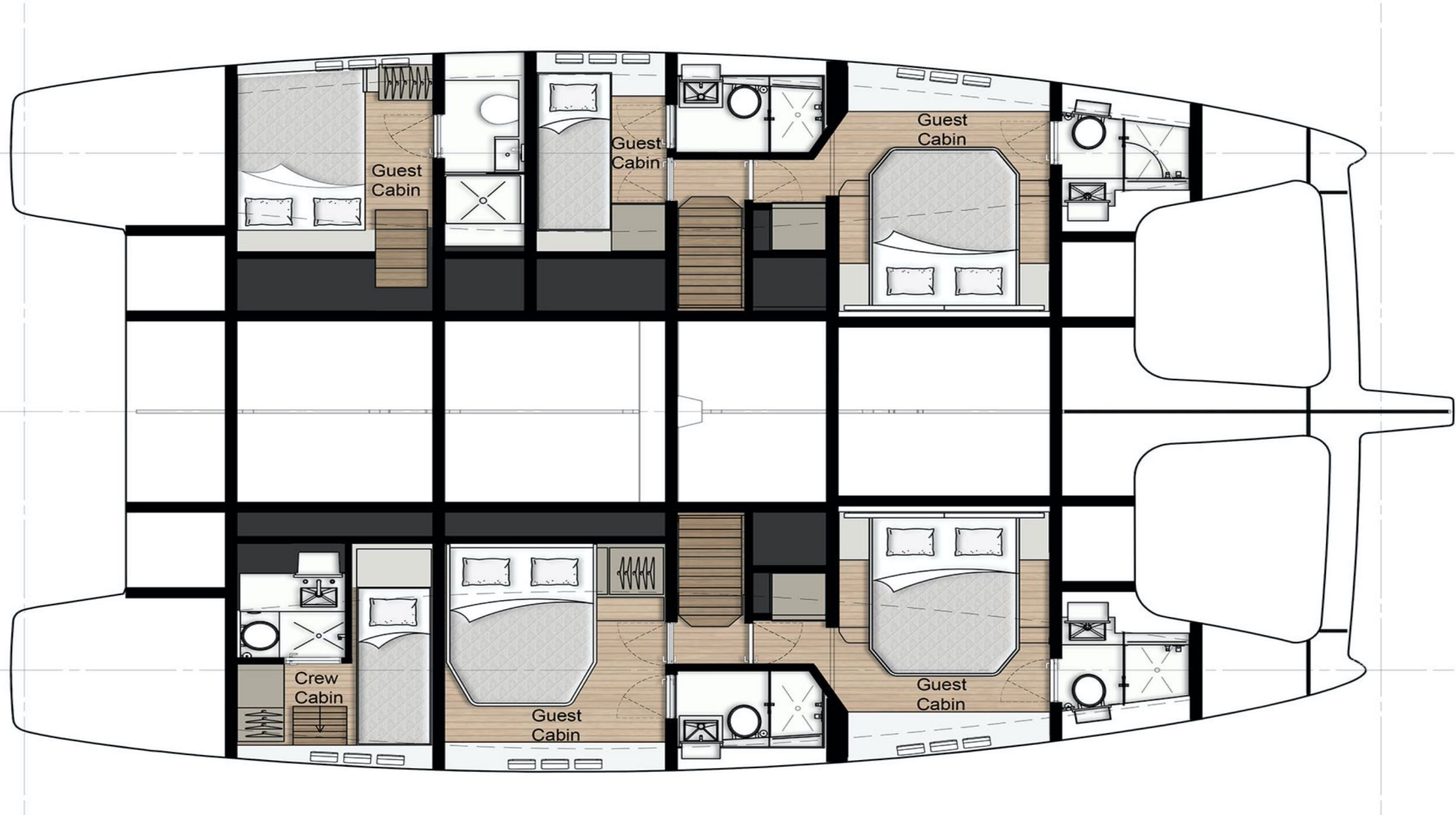












Length: 15.20m (49' 10")
Beam: 9.30m (30' 6")
Draft: 1.80m (5' 11")
Year built: 2020
Builder: Sunreef Yachts
Interior Designer: In house
Number of Cabins: 4
Total Guests (Sleeping): 8
Total Guests (Cruising): 8
Cabin Configuration: 4 Double
Master cabin on main deck: No
Total Crew: 3
Number of Beds: 4

Engines & Generators:
2 x YANMAR 80hp sail drive
Mase 17.5 kw

Fuel consumption:
Gross Tons: 59
Cruising speed: 7 knots

ADARA is an all-around compact sailing yacht ideal for exclusive getaways, charter and transoceanic adventures. Her clever bridge deck and superstructure design allow for a superior level of comfort onboard whereas the generous teak use, high bulwarks and classy lines underscore her modern style with a classic edge. Her saloon opens both onto the comfortable bow terrace and the yacht's cockpit which is extended with a hydraulic aft platform. The hulls provide impressive volumes to set up a custom layout including airy, luxurious guest cabins and an opulent master suite with a walk-in dressing, desk, sofa, retractable TV and an immense bathroom. While housing the main helm, the large flybridge is definitely dedicated to leisure with more than enough space for movable furniture, a fully-equipped wet bar and large sun pads.

Guest Accommodation:
four queen bed cabins all with private facilities an additional cabin with bunk beds and private bathroom (children only) available upon request
Audio Visual Equipment and Deck Facilities:
TV in saloon area
Communications:
laptop, printer, Wi-Fi

Tenders & Toys:
Zar Formenti 3 with 70 hp Suzuki
2 X SEABOB
1 X KAYAK
Towables
2 X Paddle board
Water ski
Snorkeling equipment