

VOLUNTEERS NEEDED!

The Recreation Study: Young Adults on the Autism Spectrum

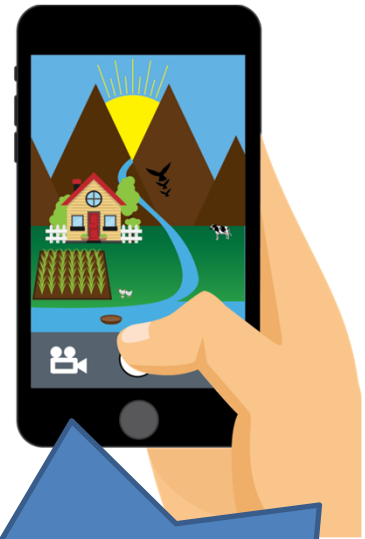
We are interested in learning more about the recreational activities of young adults on the autism spectrum.

THE STUDY MAY BE A GOOD FIT IF YOU ARE:

- Between 18 & 23 years of age
- On the autism spectrum
- Able to take pictures without any help
- Able to talk about your experiences in detail
- Your own legal guardian

AND YOU ARE WILLING TO:

- Participate in an online orientation session
- Take pictures of your recreational activities every day over a 7 – day period
- Participate in an online interview to talk about your pictures



\$75 gift card when you complete the study!

Tufts
UNIVERSITY

Friedman School
of Nutrition Science
and Policy

Participation in this research is completely voluntary. All the information that you provide will be confidential.

INTERESTED?

Call or text (617) 209-9254
or email recreationstudy@tufts.edu

The Recreation Study
(617) 209-9254
recreationstudy@tufts.edu

The Recreation Study
(617) 209-9254
recreationstudy@tufts.edu

The Recreation Study
(617) 209-9254
recreationstudy@tufts.edu

The Recreation Study
(617) 209-9254
recreationstudy@tufts.edu

The Recreation Study
(617) 209-9254
recreationstudy@tufts.edu

The Recreation Study
(617) 209-9254
recreationstudy@tufts.edu

The Recreation Study
(617) 209-9254
recreationstudy@tufts.edu

The Recreation Study
(617) 209-9254
recreationstudy@tufts.edu

The Recreation Study
(617) 209-9254
recreationstudy@tufts.edu

The Recreation Study
(617) 209-9254
recreationstudy@tufts.edu

The Recreation Study
(617) 209-9254
recreationstudy@tufts.edu