

Explosion-Proof Servo Motors & Electro Cylinder

Electromechanical Solutions for ATEX Environments



Electromechanical Solutions for ATEX Environments



Olympus Controls has extended its successful use of Parker's range of high force electro thrust cylinders, motors and gearboxes to make them suitable for use in explosive atmospheres (ATEX environments).

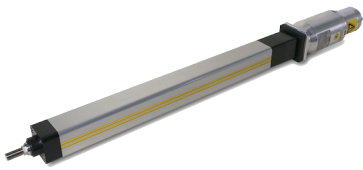
These newly certified ATEX products take all the advantages of the popular standard products and transfer them to applications for precise motion, positioning, setting and actuating in explosive environments. The new ATEX products have certification for equipment group II, category 2 in explosive gas atmospheres.

With the combination of ETH actuator, plus EX series servo motors, plus APEX's Planetary and Spiral Bevel gearboxes – *all ATEX-certified* – Olympus Controls now offers a complete drive package for your Explosion-Proof application needs. Such applications can also be controlled with the PAC controller for a complete solution.

An ATEX environment is one deemed to carry a mixture of air and flammable substances as gases, vapors, liquids, small fibers, mist or dust under atmospheric conditions that have the potential to explode. ATEX-certified equipment is vital for use in such conditions.

Extreme Industrial Environments





High Force Electro Thrust Cylinder - ETH

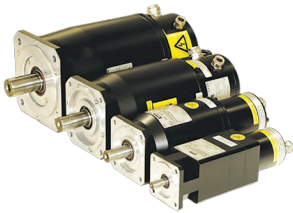
Thrust Force up to 56 kN

ATEX certification Group II, category 2 in explosive gas atmosphere



The ETH electro cylinder offers an unparalleled force density, power and performance for precise motion, positioning, setting and actuating. Closes the gap between pneumatic and hydraulic actuators; suitable to replace those in many applications and simultaneously increase reliability of the production process with an economical solution. A wide choice of accessories offers many possibilities in a wide variety of fields.

Frame sizes	ETH032 / ETH050 / ETH080 / ETH100
Screw pitch	5, 10, 22 mm
Stroke	up to 2000 mm
Traction/thrust force	up to 56000N
Position repeatability	up to ± 0.03 mm
Directives	94/9/EC: ATEX Equipment Group II Category 2
Classification	II 2G Ex c IIC T4 EPS 13 ATEX 2592 x (ETH032 / ETH050)
	II 2G Ex c IIB T4 EPS 13 ATEX 2592 x (ETH080 / ETH100)



Explosion Proof Servo Motors - EX & EY Series

ATEX Zone 1 & 2, UL Class 1 Division 1



The EX series is a range of permanent magnet servo motors designed for use in explosive atmospheres. Featuring robust explosion-proof housings, EX motors are capable of bearing internal explosions with no risks of propagation to the neighboring environment. EX servo motors have excellent motion quality, great acceleration/deceleration capabilities, and high torque output over a wide speed range. Various winding and numerous options are available to offer maximum flexibility.

Motor type	Permanent magnet synchronous motors
Torque range	1.75...35 Nm
Speed range	2000...8000 min ⁻¹
Voltage supply	230 / 400 VAC
Conformance	ATEX 94/9/EC Directive
	EN60079-0, EN60079-1 EN61241-0 and EN61241-1 standards UL Zone 1 – UL674 standard
Classification	II 2G Ex d IIB T4 IP64 (Gas) Option: Gas and Dust II 2GD Ex d IIB T4 IP65 Ex tD A21 IP65 T135°C



Parker Automation Controller (PAC)

Integrated Machine Control, Multi-Axis Motion & Visualization

The Parker Automation Controller (PAC) is precisely engineered for demanding industrial environments. Coupled with removable, solid state SD storage media, all moving parts have been eliminated for a robust, industrial grade control solution. Industry-leading EtherCAT communication protocol for motion, I/O, and third-party device connectivity, combined with the Parker Automation Manager IDE for application development, the PAC provides an engineered solution for the most demanding applications.

Processor	Intel® Atom CPU, 1.6Ghz, Dual Core, 64bit, 1 MB L2 Cache
Memory	Up to 1GB DDR3 SDRAM, 1066 MHz, PC3-8500, 204-pin SODIMM Socket
Storage	2GB Secure Digital Card (SD)
Retentive memory	256kB, 512kB
Shock rating	10g peak, 11ms (operating) 30g peak, 11 ms (non-operating)
Operating temp	32 to 122 °F (-25 to 70 °C)
Mounting	35 mm DIN rail (top-hat rail)

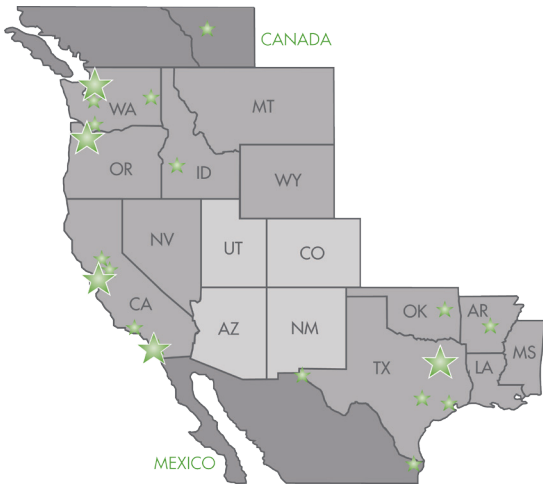
Contact us for more info!

800.236.0607

Explosion-Proof
Solutions for ATEX Environments



WHERE
INNOVATION
MEETS
AUTOMATION



sales@olympus-controls.com

NW DIVISION

Corporate HQ

18280 SW 108th Ave
Tualatin, OR 97062
503.582.8100

Seattle Office

7815 S 180th St.
Kent, WA 98032
800.236.0607

CA DIVISION

Fremont Office

47603 Lakeview Blvd
Fremont, CA 94538
800.236.0607

San Diego Office

10451 Roselle St
San Diego, CA 92121
800.236.0607

GULF DIVISION

Dallas Office

703 Main St
Lake Dallas, TX 75065
940.565.9411



Portland | Seattle | Fremont | San Diego | Dallas
sales@olympus-controls.com

