



COVID-19 RESPONSE

INYO

COVID-19 Update

Tuesday, February 15, 2022

Case Numbers

Scan the QR Code with a
smart phone, or visit:
inyocounty.us/covid-19/case-numbers



Confirmed COVID-19 Cases:

4,006 total confirmed cases

15 new cases (**0.4%** increase)

40.3 cases per 100K (7-day average)

Confirmed COVID-19 Deaths:

52 total confirmed deaths

0 new deaths (**0%** increase)

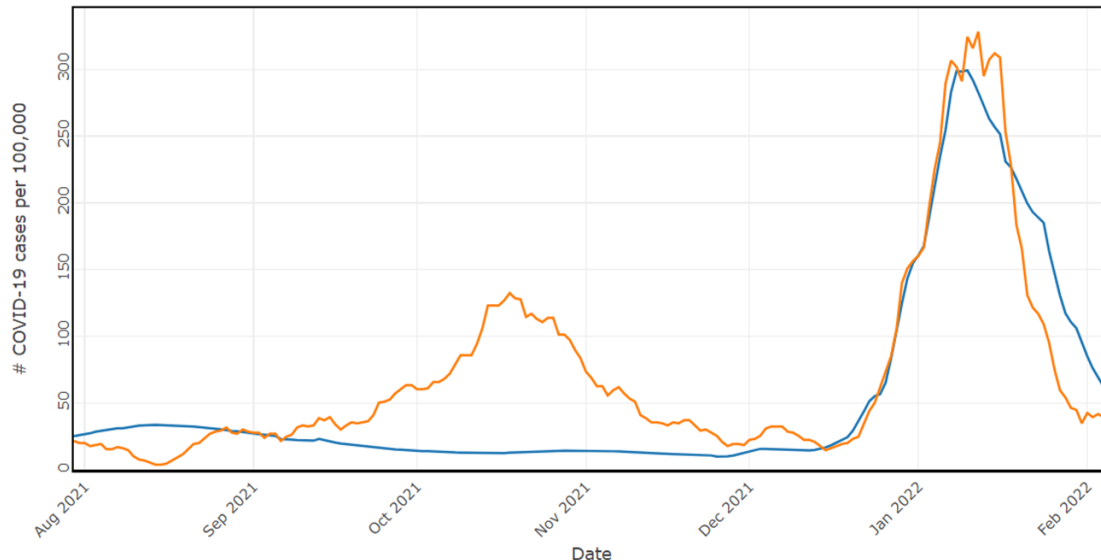
0.8 deaths per 100K (7-day average)

as of: 02/14/2022 @ 9:04 am

Case Trends

Inyo County vs. California

Case Rate per 100,000 per day
(7 day avg. w/ 7 day lag) for: **Inyo** and **California**



Scan the QR Code with a
smart phone, or visit:

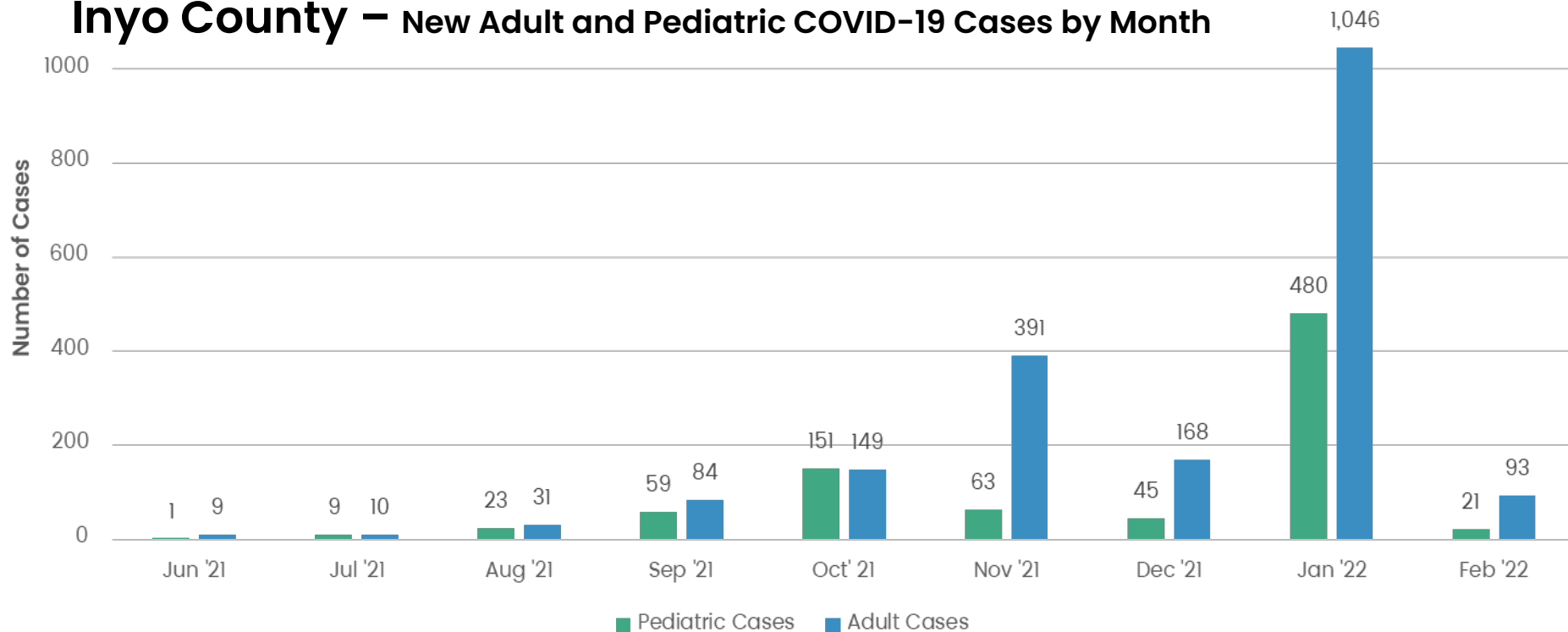
www.inyocounty.us/covid-19/data-resources



- The current case rate in **Inyo County** is:
39.49 per 100,000
(an decrease ↓ compared to **45.67 per 100,000** reported on 01/31/21)
- The test positivity rate in **Inyo County** is:
13.64%
- The current case rate in **California** is:
59.10 per 100,000
(a decrease ↓ compared to **108.49 per 100,000** reported on 01/31/21)
- The test positivity rate in **California** is:
9.24%

Case Trends

Inyo County – New Adult and Pediatric COVID-19 Cases by Month

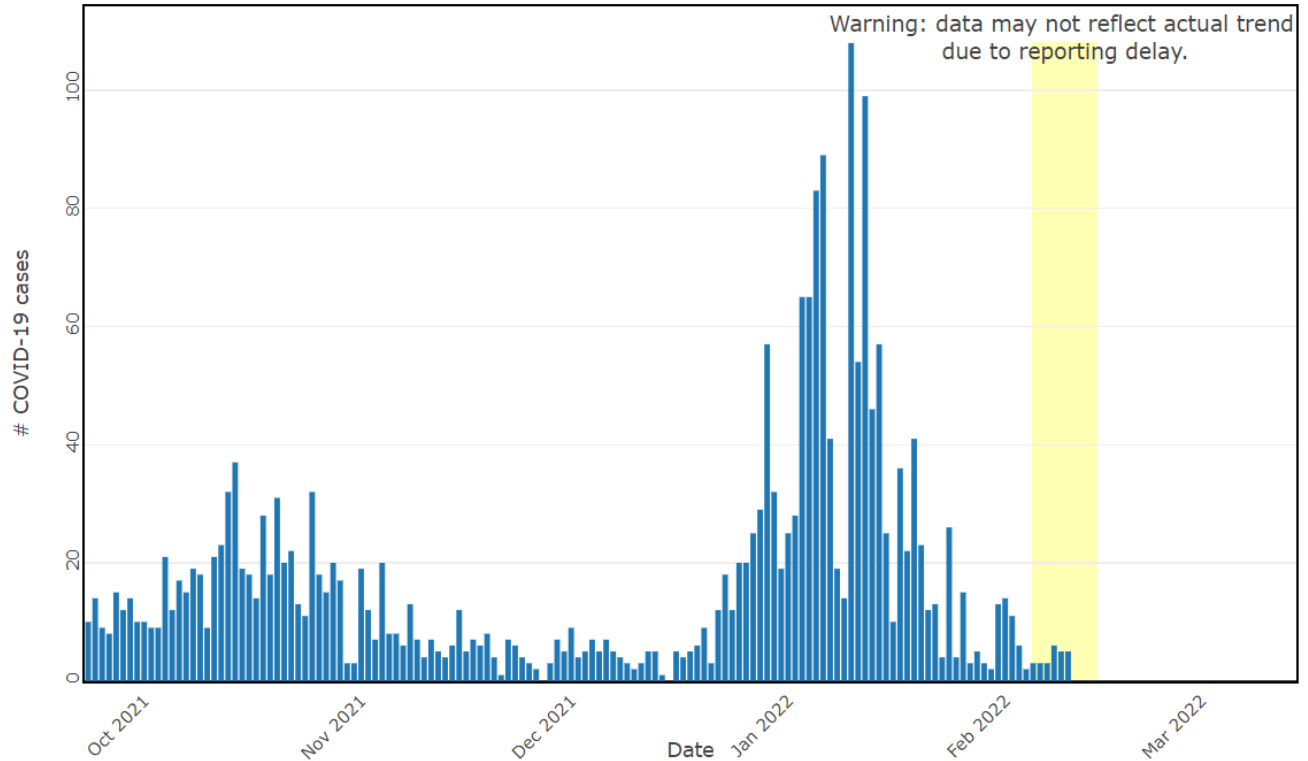


Notes:

- As of 01/04/2022, case counts reflect cases confirmed by PCR and antigen testing. Prior to 01/04/2022, only PCR-confirmed cases were included in data sets.
- Due to current stress from increases in COVID-19 cases locally and statewide on California infectious disease reporting and contact tracing platforms CalRedie and CalConnect, case counts may be underreported.
- There are six (6) cases with no known date of birth in January 2022

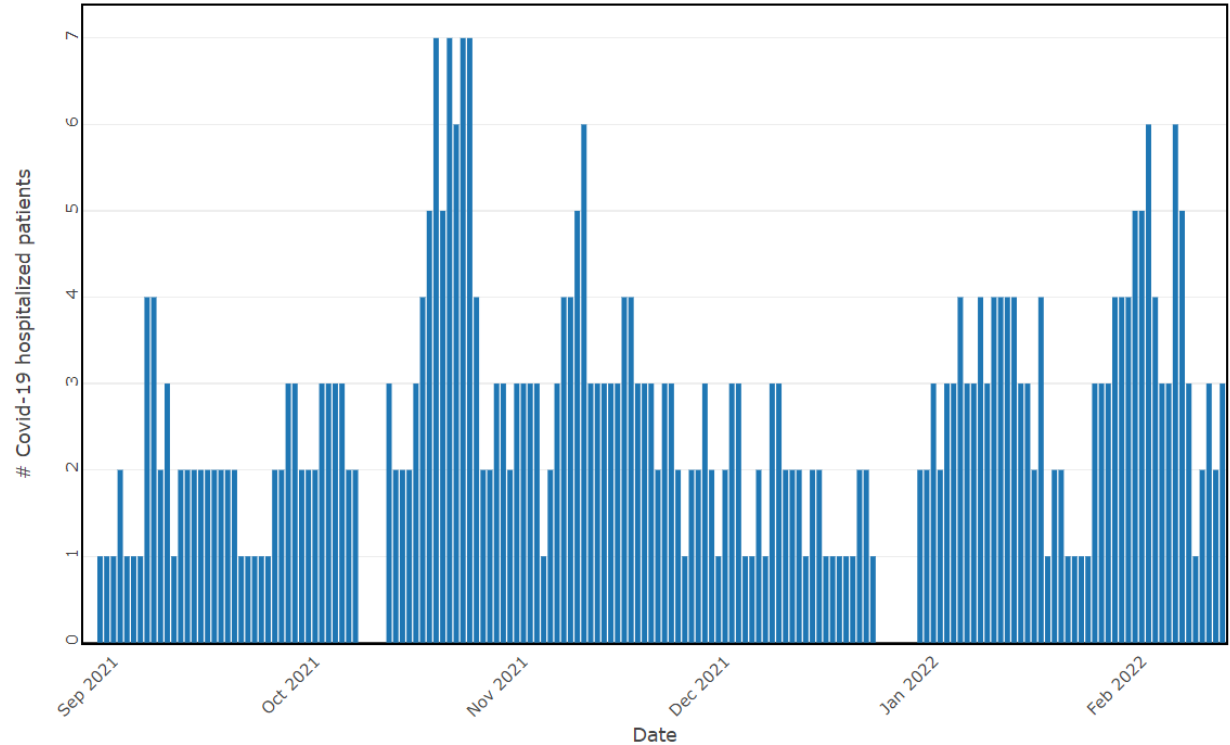
Case Trends - Inyo County

New Cases(Day-over-day):
Inyo



Hospitalizations - Inyo County

Hospitalized Patients
that are COVID-19 positive (+)
Inyo



Testing Updates

Community Testing Sites:

Appointments and/or Patient ID Required.

→ Visit: lhi.care/covidtesting to create your patient account and make an appointment

Scan the QR Code with a
smart phone, or visit:

lhi.care/covidtesting



Hours of Operation:



- Bishop: 8:00 am to 4:00 pm
(lunch from Noon to 1:00 pm)
Monday, Wednesday, & Thursday

CLOSED – Monday, February 21
(President's Day)



- Lone Pine: 9:00 am to 6:00 pm
(lunch from 11:00 am to 1:00 pm)
Tuesday & Friday



At-Home COVID-19 Tests



Place Your Order for **Free** At-Home COVID-19 Tests.

Residential households in the U.S. can order one set of four (4) free at-home tests from USPS.

Here's what you need to know about your order:

- Limit of one order per residential address
- One order includes 4 individual rapid antigen COVID-19 tests
- Orders will ship free starting in late January

Visit: special.usps.com/testkits



These test kits cannot be shipped to business addresses or business PO Boxes.



Inyo County Public Health has not received additional shipments of iHealth at-home COVID-19 testing kits.

If/When more arrive, we will inform the public about availability and pick-up locations.

COVID-19 Vaccine

Inyo County Vaccine Coverage

Scan the QR Code with a
smart phone, or visit:

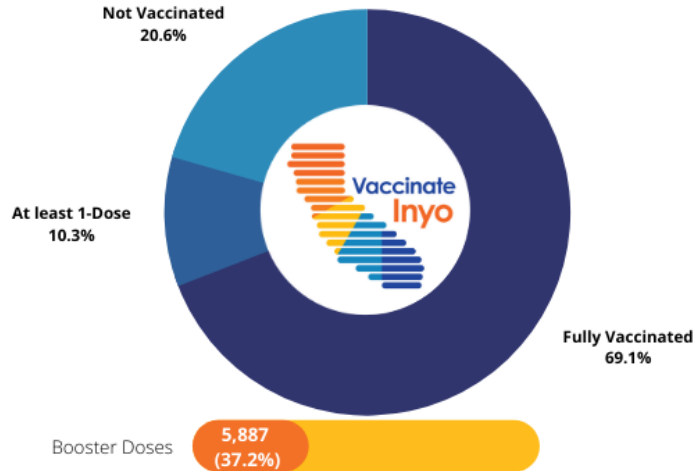
www.inyocounty.us/vaccines



Vaccinated Status: Inyo County

As of: 02/14/2022

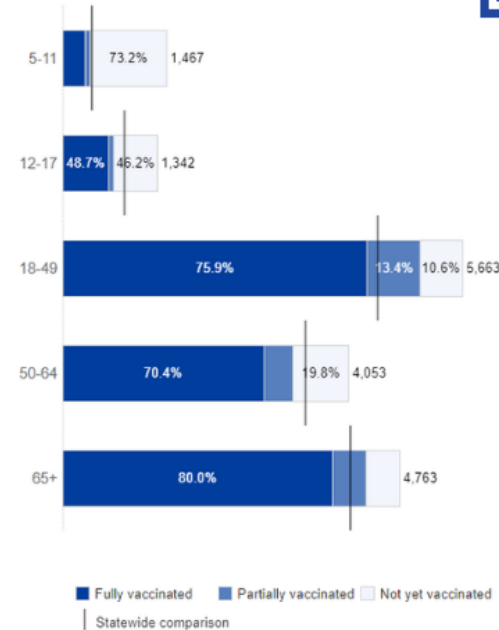
Eligible Population*: 17,288



*Percent of people that are either partially/fully vaccinated through state & federal entities out of the estimated 5+ population

*Boosters are only available for those age 12+ (or immunocompromised individuals age 5+) = ~ 15,821 people

Vaccinated Status by Age Inyo County



COVID-19 Vaccine Effectiveness - California

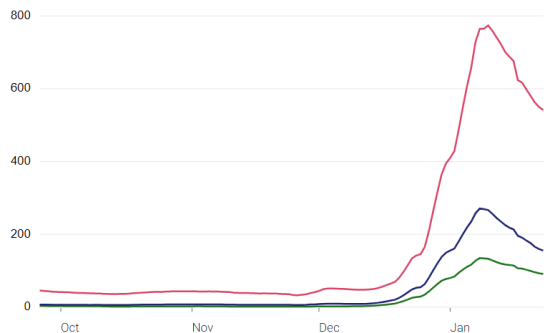
Scan the QR Code with a smart phone, or visit:

covid19.ca.gov/state-dashboard/#postvax-status



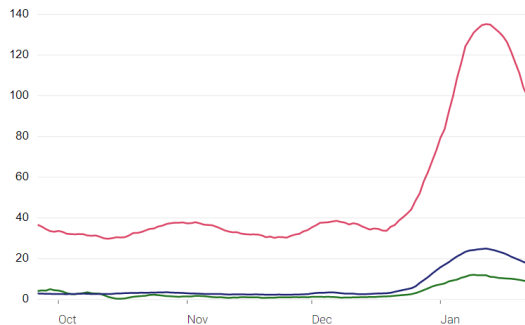
— Unvaccinated — Vaccinated but not boosted — Vaccinated and boosted

Cases per 100K (7-day running average)



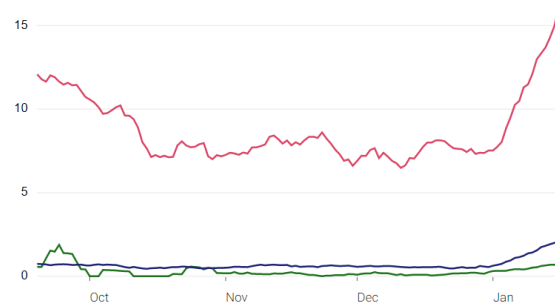
From January 17, 2022 to January 23, 2022, unvaccinated people were **5.9x more likely** to get COVID-19 than people who received their booster dose.

Hospitalizations per million (7-day running average)



From January 17, 2022 to January 23, 2022, unvaccinated people were **11.4x more likely** to be hospitalized with COVID-19 than people who received their booster dose.

Deaths per million (7-day running average)



From January 10, 2022 to January 16, 2022, unvaccinated people were **21.8x more likely** to die from COVID-19 than people who received their booster dose.

COVID-19 RESPONSE



Questions?

Email:

HealthOfficer@inyocounty.us