



# COVID-19 RESPONSE

# COVID-19 Update

Tuesday, February 8, 2022

# Case Numbers

Scan the QR Code with a  
smart phone, or visit:  
[inyocounty.us/covid-19/case-numbers](https://inyocounty.us/covid-19/case-numbers)



## Confirmed COVID-19 Cases:

**3,970** total confirmed cases

**22** new cases (**0.6%** increase)

**44.9** cases per 100K (7-day average)

## Confirmed COVID-19 Deaths:

**51** total confirmed deaths

**0** new deaths (**0%** increase)

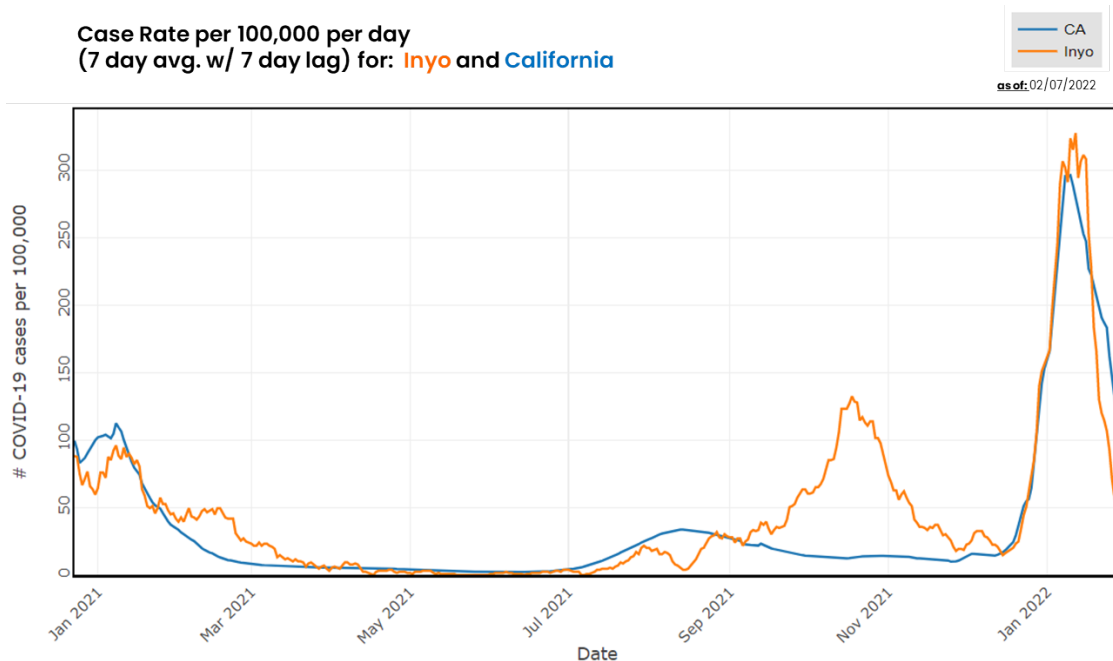
**0** deaths per 100K (7-day average)

as of: 02/07/2022 @ 9:27am

# Case Trends

## Inyo County vs. California

Case Rate per 100,000 per day  
(7 day avg. w/ 7 day lag) for: **Inyo** and **California**



Scan the QR Code with a  
smart phone, or visit:

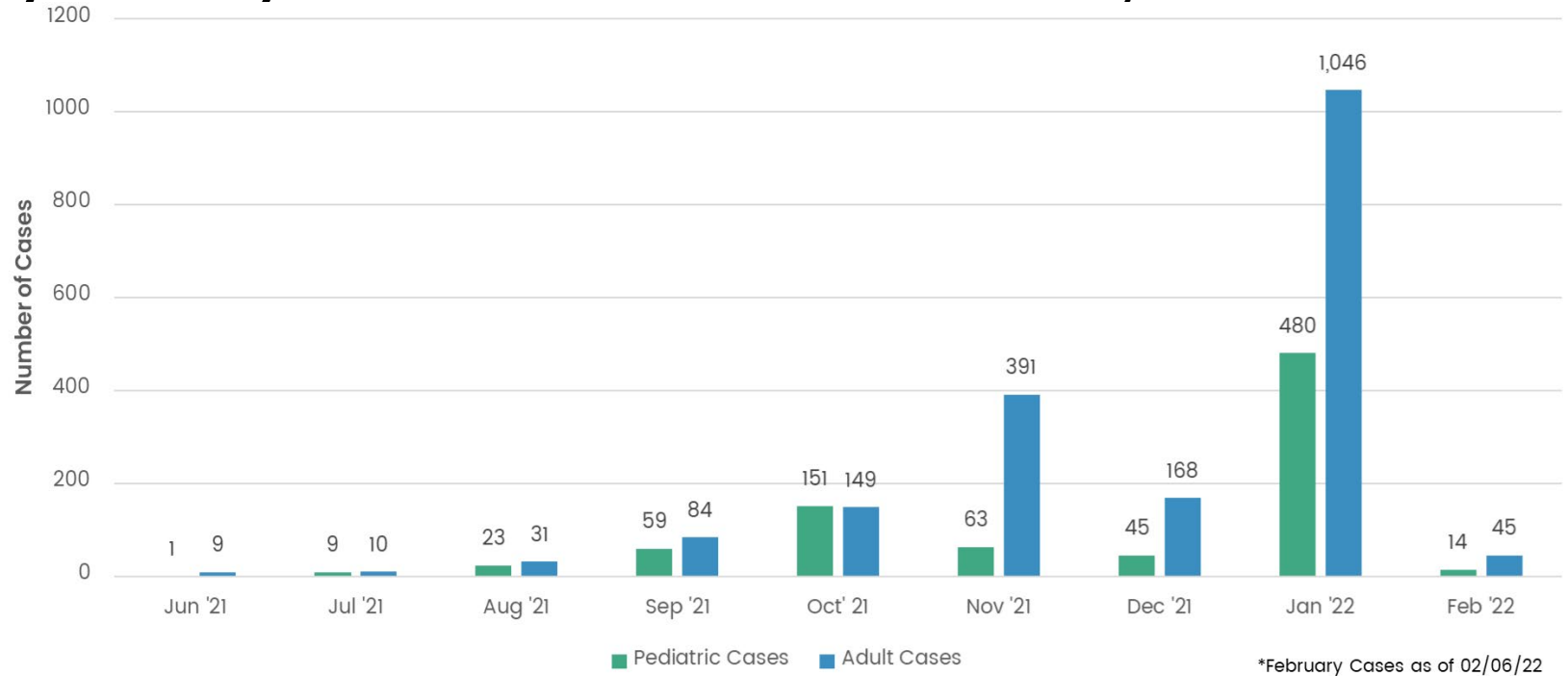
[www.inyocounty.us/covid-19/data-resources](http://www.inyocounty.us/covid-19/data-resources)



- The current case rate in **Inyo County** is:  
**45.67 per 100,000**  
(an decrease ↓ compared to **117.68 per 100,000** reported on 01/31/21)
- The test positivity rate in **Inyo County** is:  
**14.56%**
- The current case rate in **California** is:  
**108.49 per 100,000**  
(a decrease ↓ compared to **187.49 per 100,000** reported on 01/31/21)
- The test positivity rate in **California** is:  
**14.33%**

# Case Trends

## Inyo County – New Adult and Pediatric COVID-19 Cases by Month

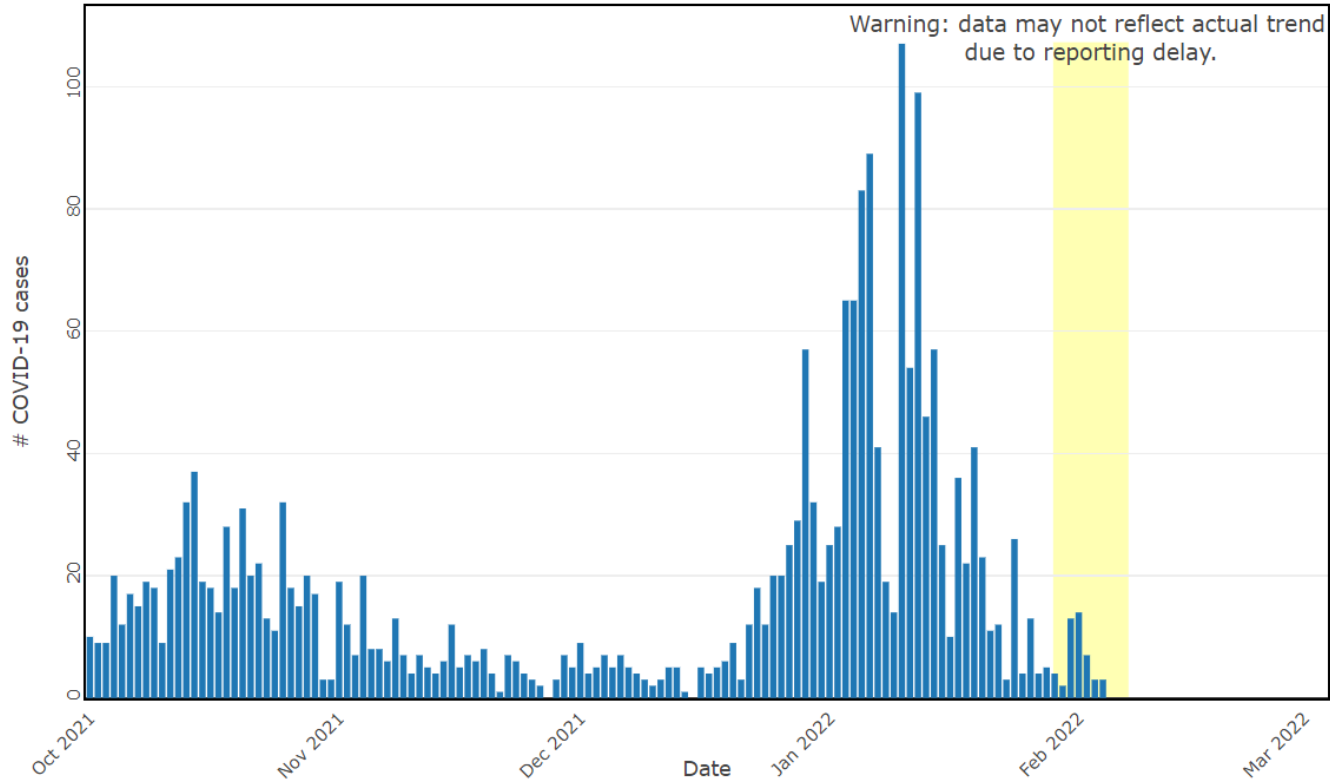


### Notes:

- As of 01/04/2022, case counts reflect cases confirmed by PCR and antigen testing. Prior to 01/04/2022, only PCR-confirmed cases were included in data sets.
- Due to current stress from increases in COVID-19 cases locally and statewide on California infectious disease reporting and contact tracing platforms CalRedie and CalConnect, case counts may be underreported.
- There are six (6) cases with no known date of birth in January 2022

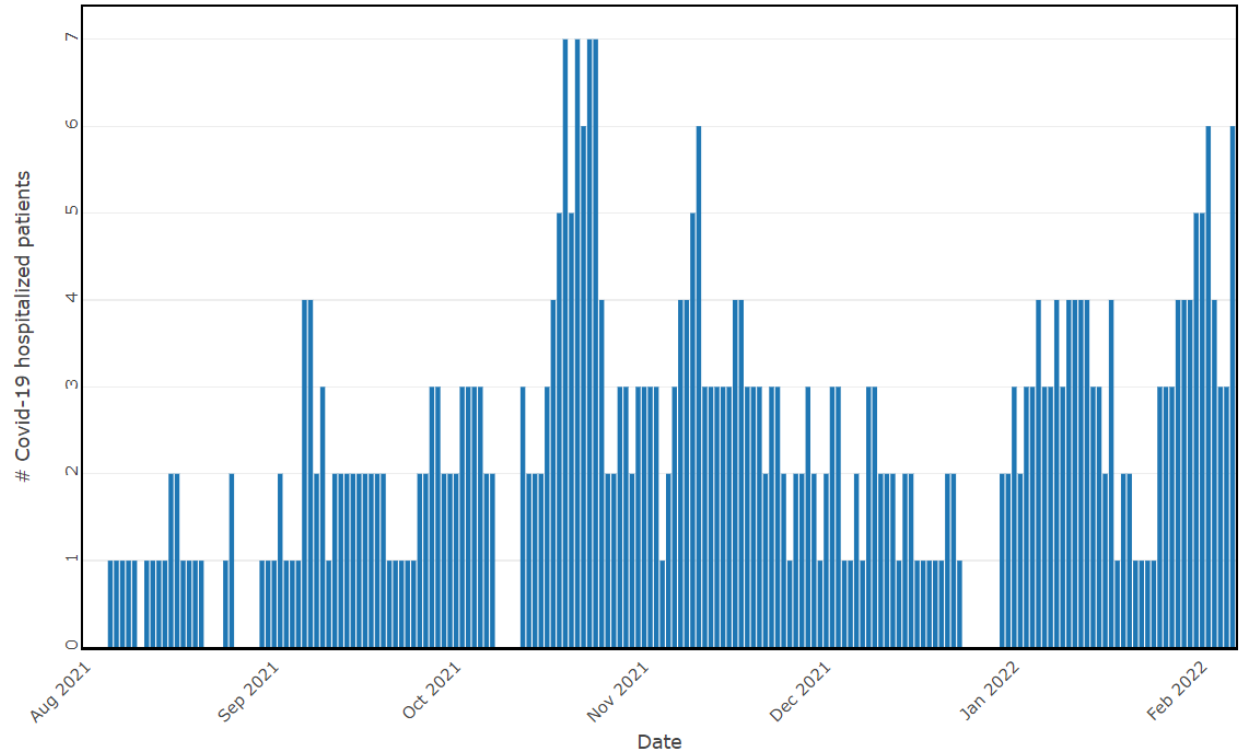
# Case Trends - Inyo County

New Cases(Day-over-day):  
Inyo



# Hospitalizations - Inyo County

## # Hospitalized Patients that are COVID-19 positive (+): Inyo



# Testing Updates

## Community Testing Sites:

Appointments and/or Patient ID Required.

→ Visit: [lhi.care/covidtesting](https://lhi.care/covidtesting) to create your patient account and make an appointment

Scan the QR Code with a  
smart phone, or visit:

[lhi.care/covidtesting](https://lhi.care/covidtesting)



### Hours of Operation:



- Bishop: 7:00 am to 7:00 pm  
(lunch from Noon to 1:00 pm)  
Monday, Wednesday, & Thursday

! STARTING 2/14 – 8:00 am to 4:00 pm  
(lunch from Noon to 1:00 pm)  
Monday, Wednesday, & Thursday

**CLOSED** – Monday, February 21  
(President's Day)



- Lone Pine: 9:00 am to 6:00 pm  
(lunch from 11:00 am to 1:00 pm)  
Tuesday & Friday



# At-Home COVID-19 Tests



Place Your Order for **Free** At-Home COVID-19 Tests.

Residential households in the U.S. can order one set of four (4) free at-home tests from USPS.

Here's what you need to know about your order:

- Limit of one order per residential address
- One order includes 4 individual rapid antigen COVID-19 tests
- Orders will ship free starting in late January

**Visit:** [special.usps.com/testkits](https://special.usps.com/testkits)



*These test kits cannot be shipped to business addresses or business PO Boxes.*



Inyo County Public Health has not received additional shipments of iHealth at-home COVID-19 testing kits.

If/When more arrive, we will inform the public about availability and pick-up locations.



# COVID-19 Vaccine

## Inyo County Vaccine Coverage

Scan the QR Code with a  
smart phone, or visit:

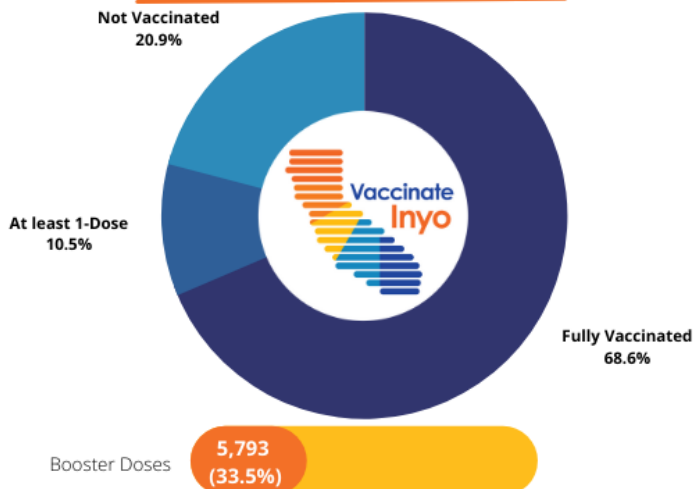
[www.inyocounty.us/vaccines](http://www.inyocounty.us/vaccines)



### Vaccinated Status: Inyo County

As of: 02/07/2022

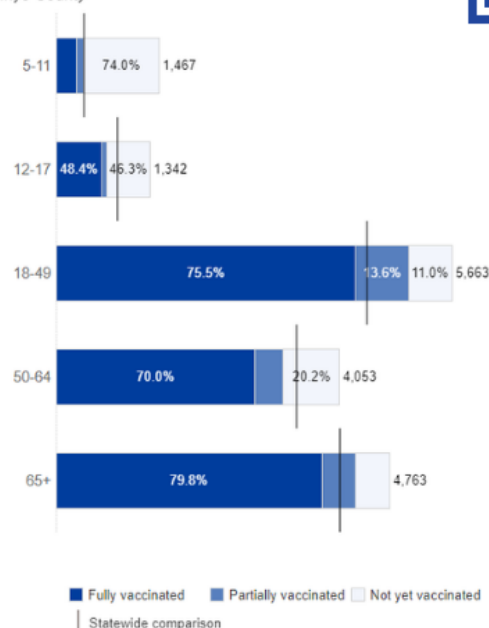
Eligible Population\*: 17,288



\*Percent of people that are either partially/fully vaccinated through state & federal entities out of the estimated 5+ population

\*Boosters are only available for those age 12+ (or immunocompromised individuals age 5+)

### Vaccinated Status by Age Inyo County



# COVID-19 Vaccine Effectiveness – California

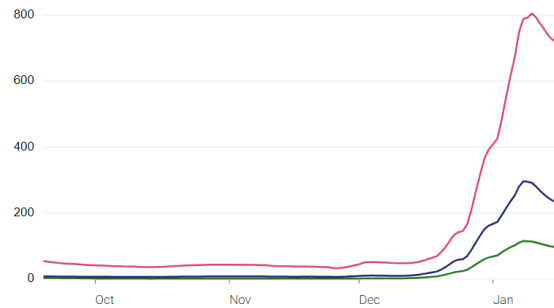
Scan the QR Code with a smart phone, or visit:

[covid19.ca.gov/state-dashboard/#postvax-status](https://covid19.ca.gov/state-dashboard/#postvax-status)



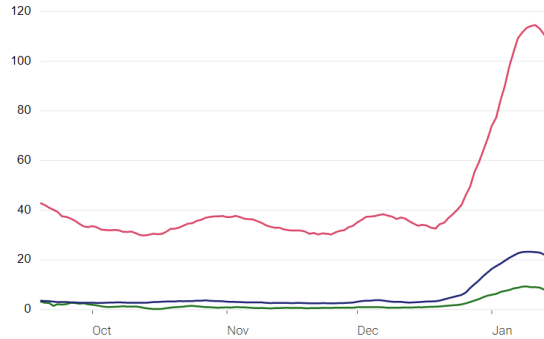
— Unvaccinated — Vaccinated but not boosted — Vaccinated and boosted

Cases per 100K (7-day running average)



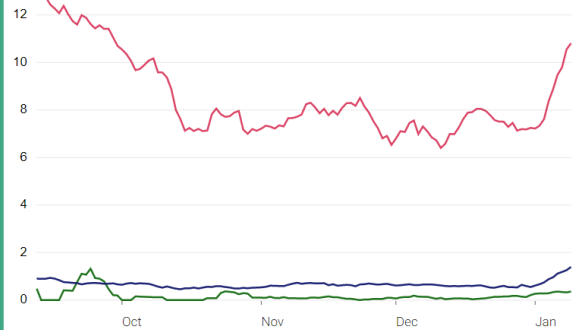
From January 10, 2022 to January 16, 2022, unvaccinated people were **7.5x more likely** to get COVID-19 than people who received their booster dose.

Hospitalizations per million (7-day running average)



From January 10, 2022 to January 16, 2022, unvaccinated people were **14.9x more likely** to be hospitalized with COVID-19 than people who received their booster dose.

Deaths per million (7-day running average)



From January 3, 2022 to January 9, 2022, unvaccinated people were **30.0x more likely** to die from COVID-19 than people who received their booster dose.

# COVID-19 RESPONSE



## Questions?

Email:

[HealthOfficer@inyocounty.us](mailto:HealthOfficer@inyocounty.us)