



**COVID-19
RESPONSE**

**RESPUESTA AL
COVID-19**

INYO

WEEKLY EPIDEMIOLOGICAL REPORT

MARCH 20, 2023

COVID-19 MANAGEMENT

On August 11, 2022, the CDC streamlined its COVID-19 guidance. The updated recommendations for community prevention and management of COVID-19 apply both nationally and locally to Inyo County, which continues to follow the CDC's guidance for COVID-19 case investigation, contact tracing, testing, and masking.

In its new guidelines for COVID-19 case investigation and contact tracing, the CDC recommends that community contact tracing be directed to high-risk group-living settings, like nursing homes and hospitals.

Inyo County strives to report the most up-to-date and complete information on local COVID-19 case numbers, regardless of risk status. Due to underreporting of at-home COVID-19 tests, the actual number of COVID-19 cases in Inyo County may not be reflected in the following case counts and COVID-19 Community Level (CCL) data.

COVID-19 PREVENTION

COVID-19 Testing, Quarantine, and Isolation Recommendations	Masking Recommendations
<p>Individuals who have been exposed to COVID-19 but are not infected should no longer quarantine, however, testing for symptomatic individuals and their close contacts should continue. Individuals who test positive for COVID-19 should isolate at home for five days and wear a mask for ten days when around others in private and public settings.</p>	<p>Actions for prevention and management of COVID-19 utilize the CDC's CCL criterion introduced in February 2022, recommending that universal masking occur in regions where the CCL is High and that immunocompromised individuals wear a mask in regions where the CCL is Medium.</p>
<p>Individuals with moderate to severe COVID-19 should isolate for 10 days and those who are immunocompromised should consult with a physician about ending isolation following a COVID-19 infection.</p>	

WEEKLY COVID-19 QUICK FACTS

- Current CCL Level: **LOW**
- Local Recommendations for COVID-19 Prevention:
 1. **All vaccine-eligible residents should complete their primary COVID-19 vaccine series and receive a booster dose** (To find a local vaccine provider, please visit www.inyocounty.us/vaccine-clinics)
 2. **Those at high-risk for severe illness should take additional precautions including avoiding non-essential indoor activities in public spaces where exposure could occur**
- There are currently **NO** Inyo County **COVID-19 related mandates** in place.

ABOUT COVID-19 COMMUNITY LEVEL (CCL)

Low	Medium	High
<ul style="list-style-type: none">Stay up to date with COVID-19 vaccinesGet tested if you have symptoms	<ul style="list-style-type: none">If you are at high risk for severe illness, talk to your healthcare provider about whether you need to wear a mask and take other precautionsStay up to date with COVID-19 vaccinesGet tested if you have symptoms	<ul style="list-style-type: none">Wear a mask indoors in publicStay up to date with COVID-19 vaccinesGet tested if you have symptomsAdditional precautions may be needed for people at high risk for severe illness

People may choose to mask at any time. People with [symptoms, a positive test, or exposure](#) to someone with COVID-19 should wear a mask. Masks are recommended in indoor public transportation settings and may be required in other places by local or state authorities.

The COVID-19 Community Index was developed by the CDC to help communities guide local COVID-19 prevention measures.

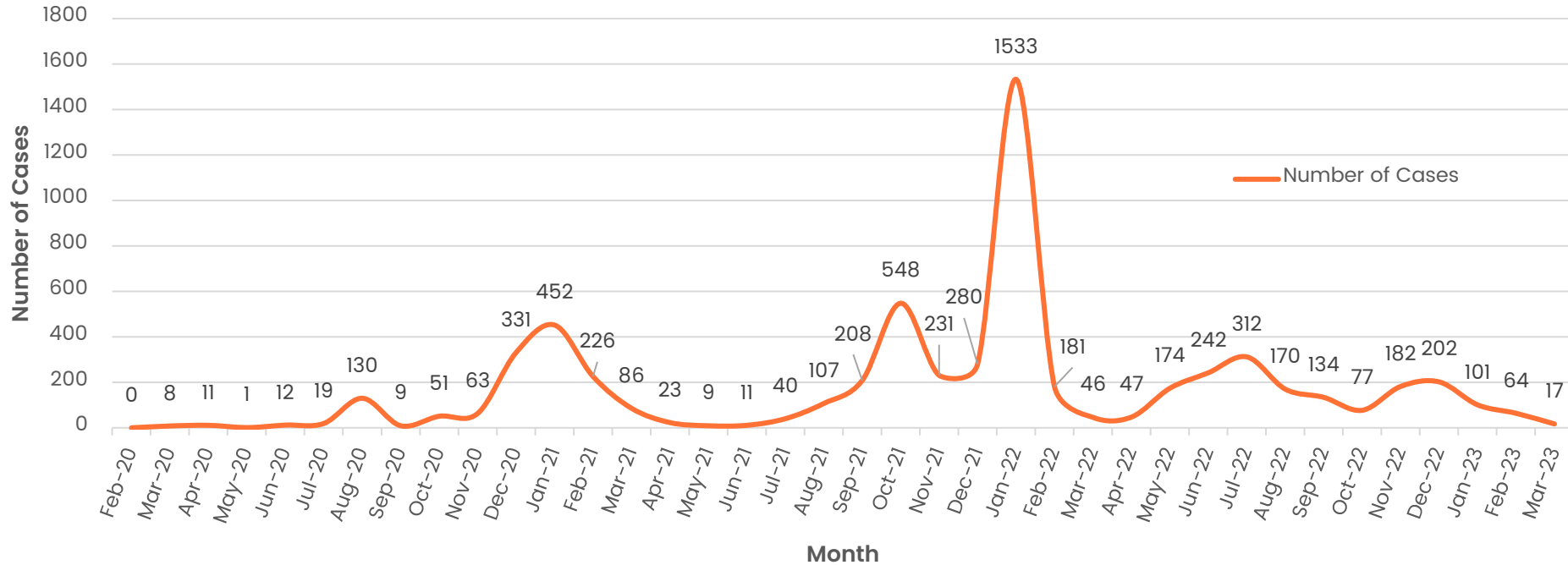
Levels are based on factors like new COVID-19 hospital admissions, the percentage of inpatient hospital beds occupied by patients with COVID-19, and the number of new COVID-19 cases over the past 7 days.

For additional information on the CDC's COVID-19 Community Levels Tool, please visit: www.cdc.gov/coronavirus/2019-ncov/your-health/covid-by-county.html



Total All-Time COVID-19 Cases

February 2020 – March 2023 | 38-Month Period

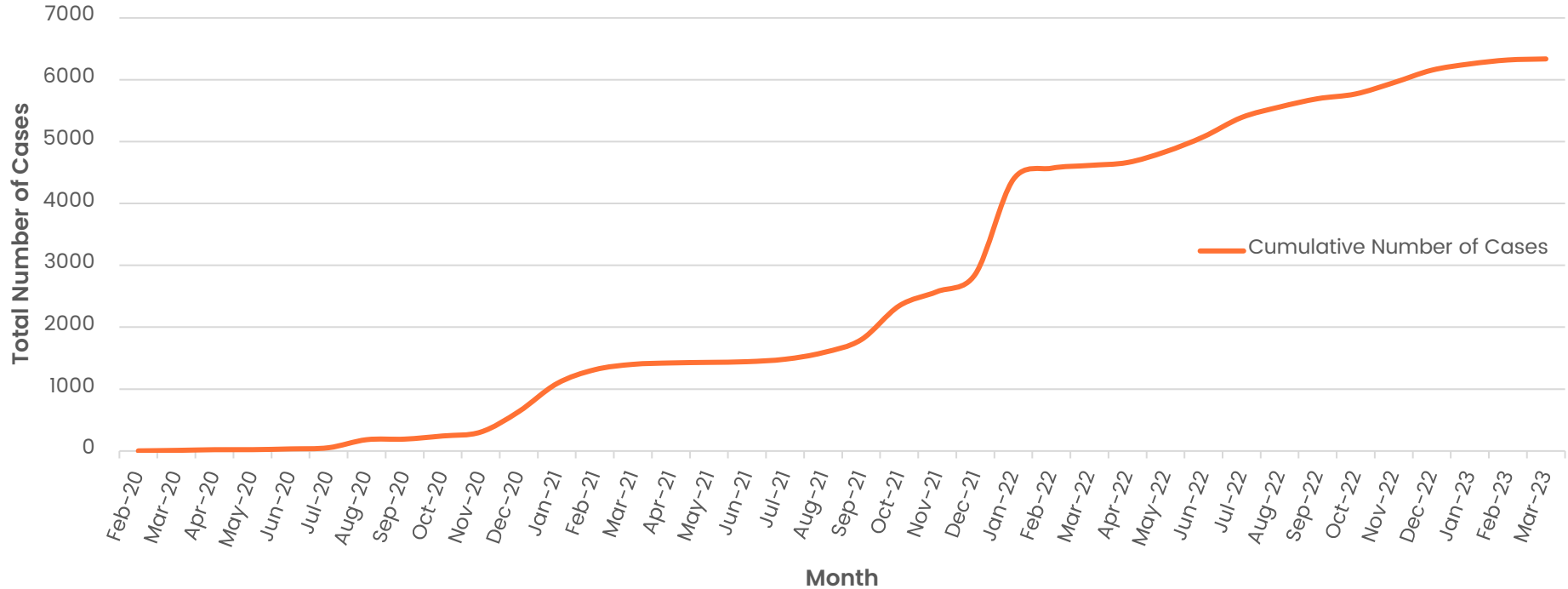


As of 01/04/2022, COVID-19 case counts reflect cases confirmed by PCR and antigen testing. Prior to 01/04/2022, only PCR-confirmed cases were included in data sets.

Cases as of: March 19, 2023

Cumulative COVID-19 Cases, Inyo County

February 2020 – March 2023 | 38-Month Period



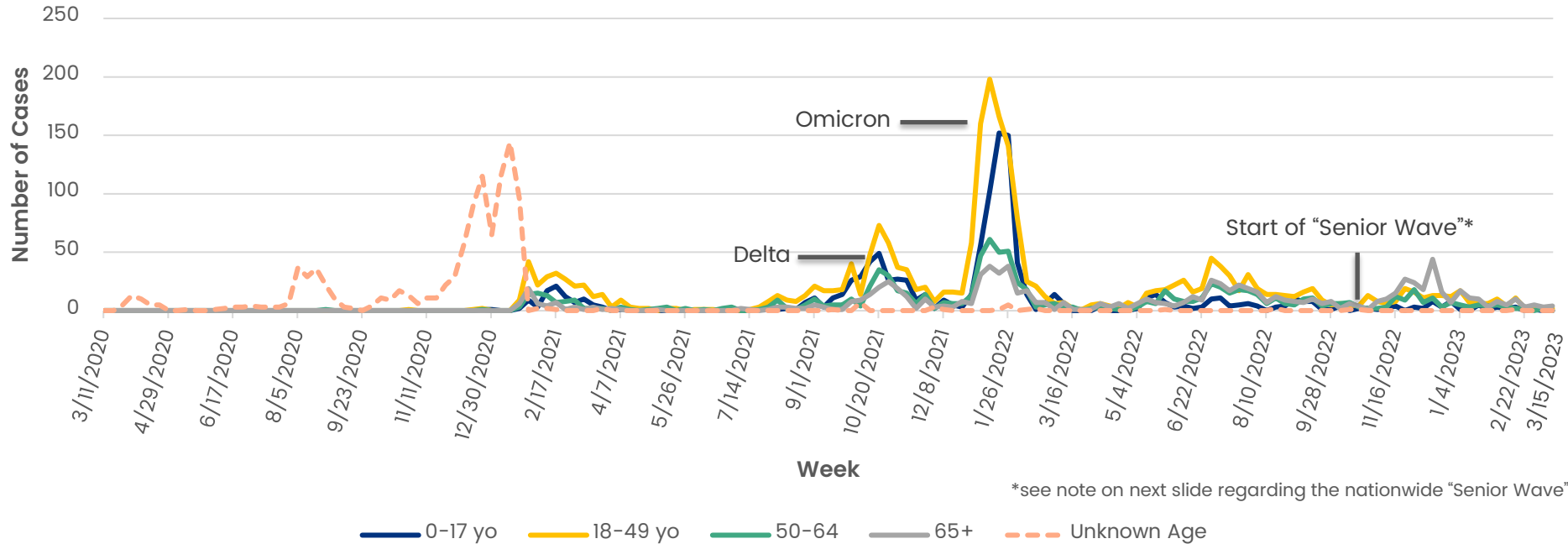
As of 01/04/2022, COVID-19 case counts reflect cases confirmed by PCR and antigen testing. Prior to 01/04/2022, only PCR-confirmed cases were included in data sets.

Cases as of: March 19, 2023



Number of COVID-19 Cases by Age Group

February 2020 – March 2023 | 38-Month Period



As of 01/04/2022, COVID-19 case counts reflect cases confirmed by PCR and antigen testing. Prior to 01/04/2022, only PCR-confirmed cases were included in data sets.

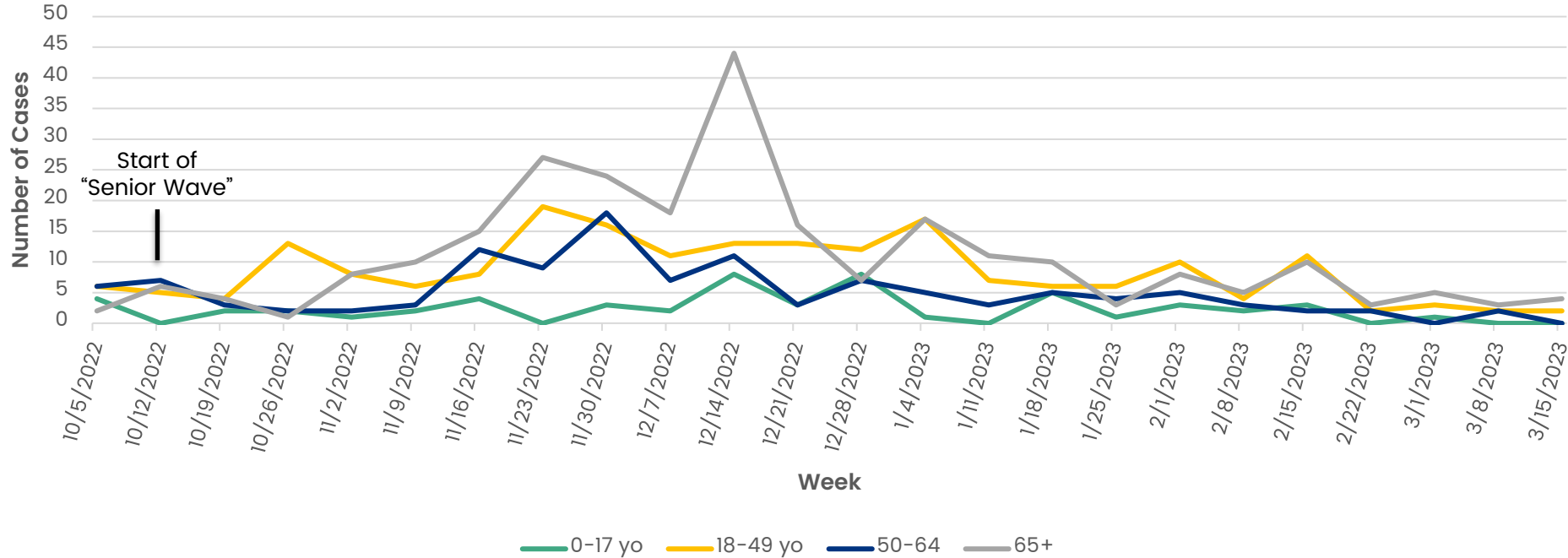
Date reflects end of 7-day period

THE “SENIOR WAVE”

- The recent **increase in COVID-19 cases among Inyo County residents aged 65 years and older** temporally aligns with what has been deemed by public health experts to be the “Senior Wave” in the United States.
- Hospitalizations from COVID-19 among the 65 and older age group have risen nationally since October 2022 and the increased number of cases among this age group in Inyo County coincides with the nationwide rise in cases and hospitalizations among those 65 and older.
- Persons 65 years and older are **more likely to be immunocompromised** and at **higher risk for severe disease** and hospitalization from COVID-19.
- The combination of **new SARS-CoV2 variants**, the **waning of COVID-19 vaccine protection** 5+ months out from most recent dose, and the **flattening of vaccine uptake** rates in Inyo County put residents aged 65 years and older at higher risk for infection and severe illness from COVID-19.

Number of COVID-19 Cases by Age Group

October 2022 – March 2023 | 6-Month Period

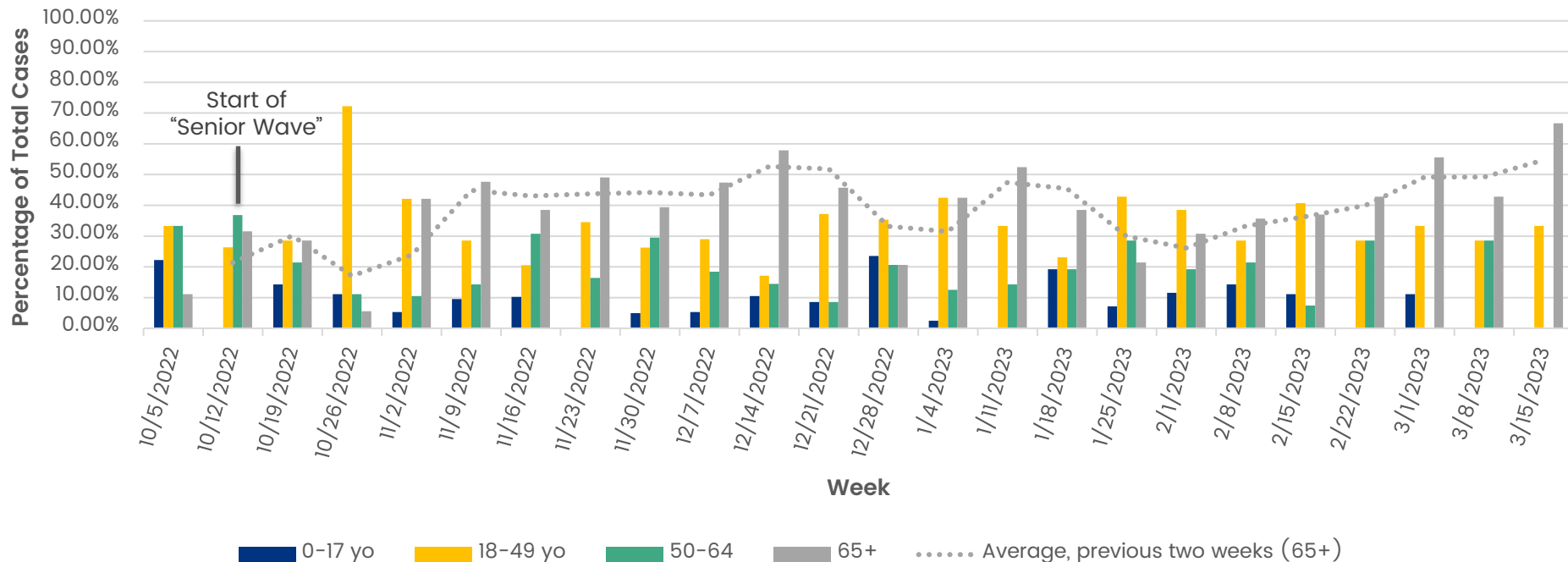


As of 01/04/2022, COVID-19 case counts reflect cases confirmed by PCR and antigen testing. Prior to 01/04/2022, only PCR-confirmed cases were included in data sets.

Date reflects end of 7-day period

Share of Total COVID-19 Cases by Age Group

October 2022 – March 2023 | 6-Month Period

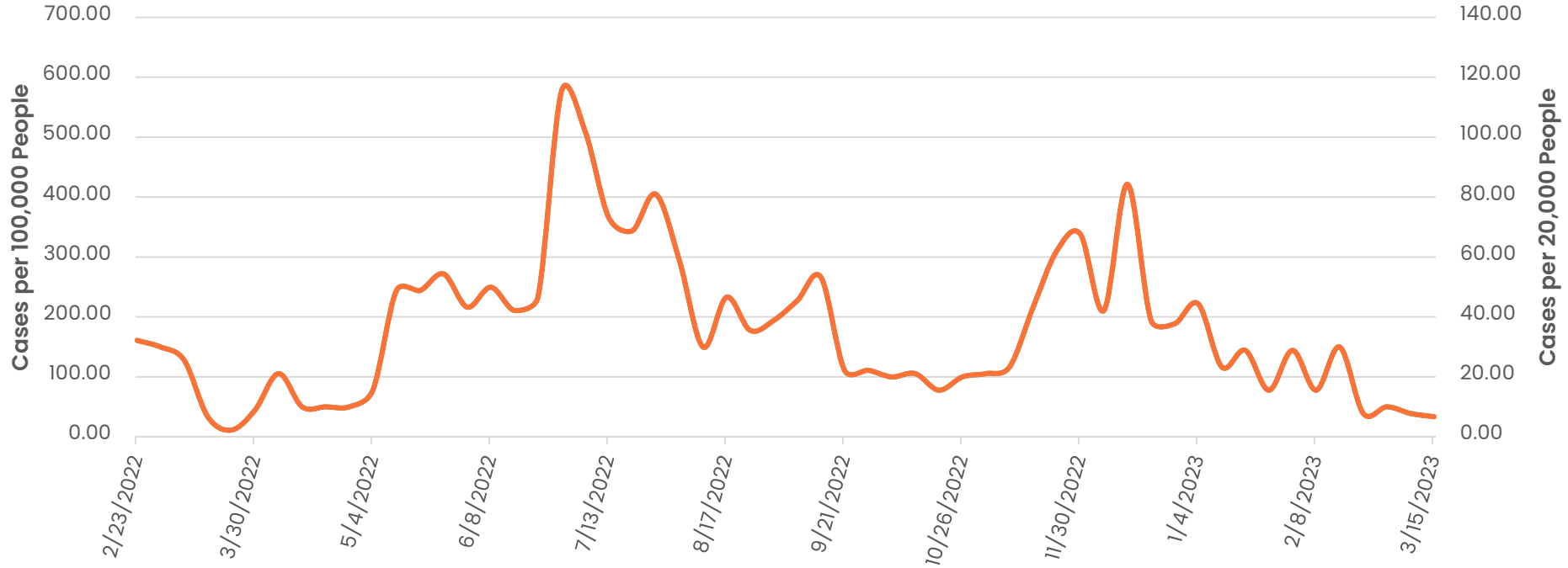


As of 01/04/2022, COVID-19 case counts reflect cases confirmed by PCR and antigen testing. Prior to 01/04/2022, only PCR-confirmed cases were included in data sets.

Date reflects end of 7-day period

COVID-19 Cases per 100,000 (20,000) People, Inyo County (7-day average)

February 2022 – March 2023 | 14-Month Period

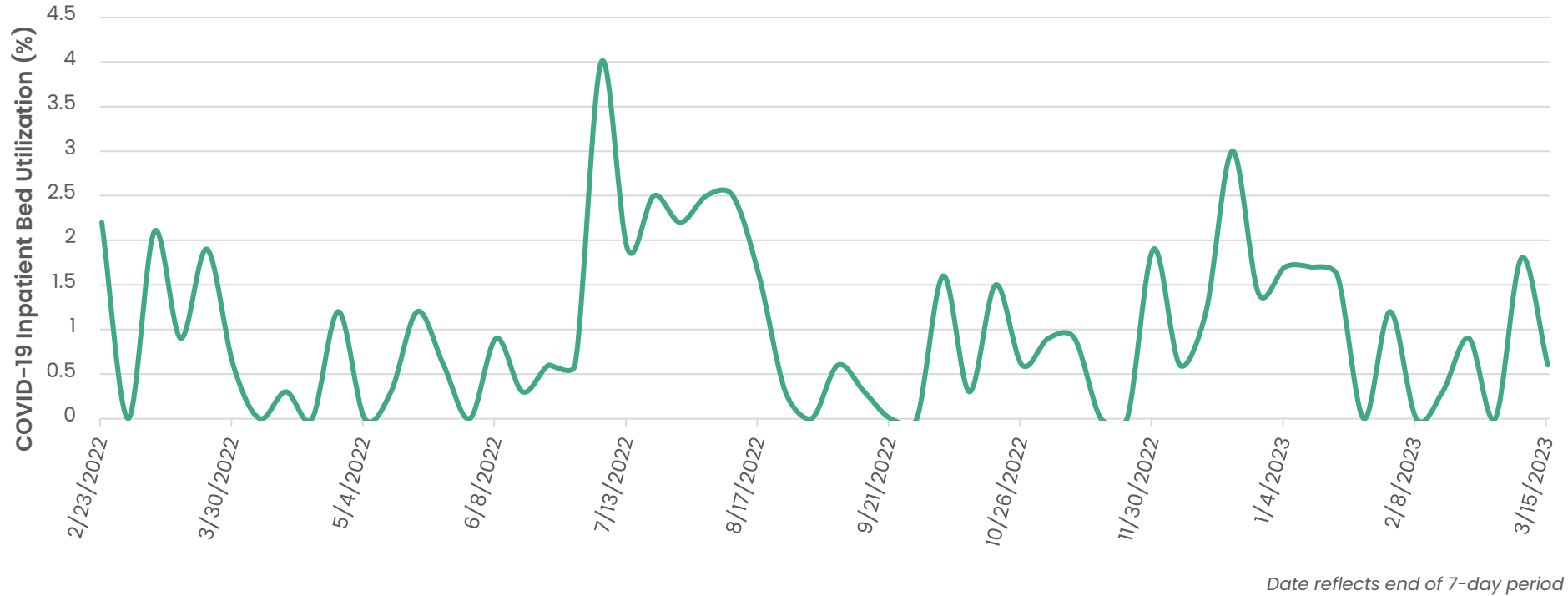


As of 01/04/2022, COVID-19 case counts reflect cases confirmed by PCR and antigen testing. Prior to 01/04/2022, only PCR-confirmed cases were included in data sets.

Date reflects end of 7-day period

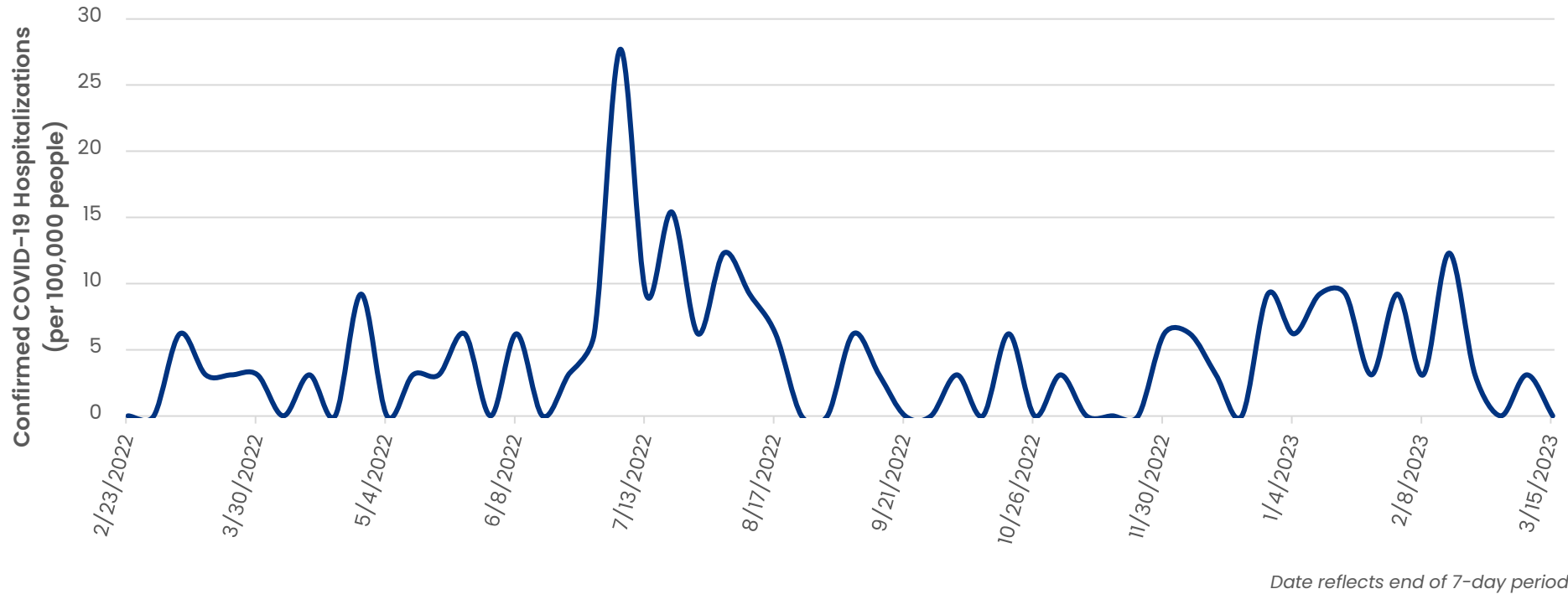
Percent of Staffed Inpatient Beds Occupied by COVID-19 Patients, Inyo County (7-day average)

February 2022 – March 2023 | 14-Month Period



Number of Hospitalized COVID-19 Confirmed Patients Per 100,000 People, Inyo County (7-day average)

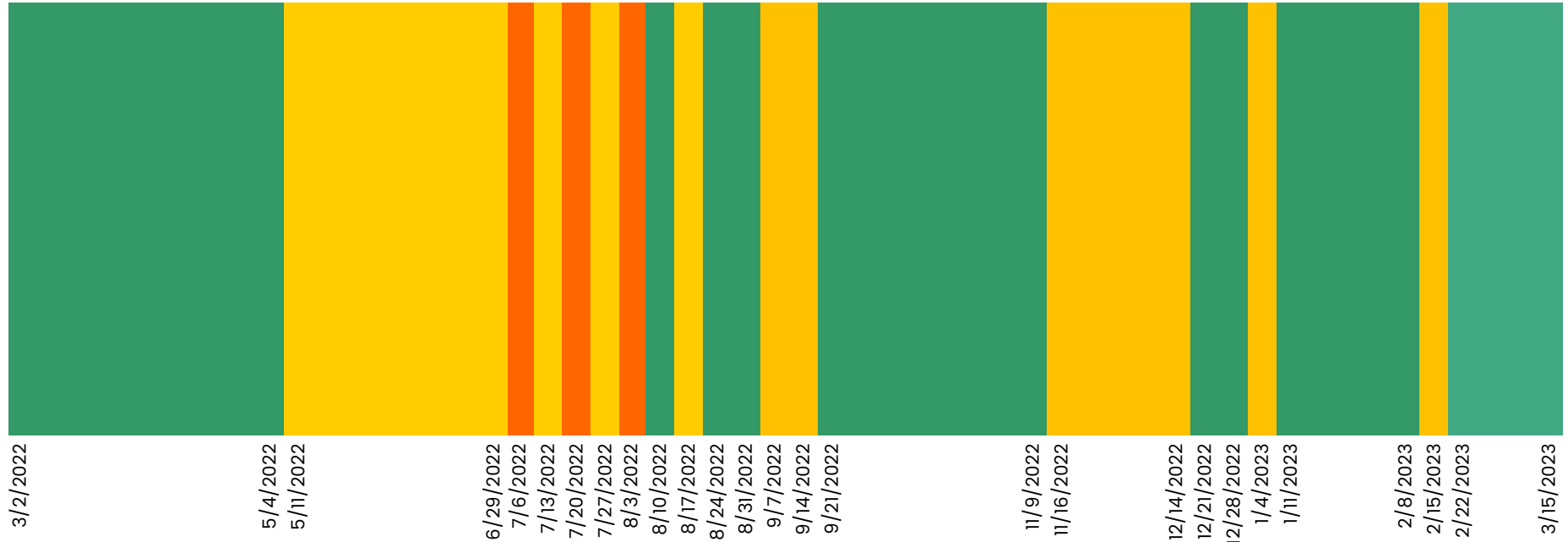
February 2022 – March 2023 | 14-Month Period



Date reflects end of 7-day period

COVID-19 Community Transmission Level

February 2022 – March 2023 | 14-Month Period



Date reflects end of 7-day period



**COVID-19
RESPONSE**

**RESPUESTA AL
COVID-19**

INYO

Questions?

Email:

HealthOfficer@inyocounty.us