

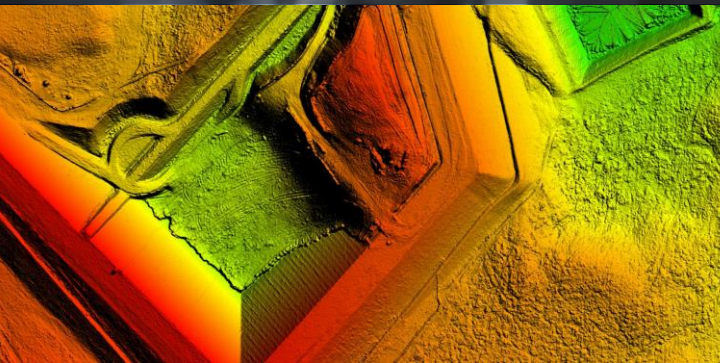
UAS Mapping – The Most Modern Reality in Territory Management



Cities – Agriculture – Towers – Pipelines – Roads & Bridges – Emergency – Entertainment – Mapping
YOUR OPERATION



**Lower your operational costs,
increasing performance and agility**



UAS Mapping & Inspection: an Agile and High-Performance Solution

Implement detailed and **optimized decision-making** from exploration to industry logistic delivery.

Implement mapping and derivative analyses for all stages of projecting, planning, and deploying projects for **Oil & Gas, Telecommunication, Construction, Transportation, Agriculture, Mining, Public Works and several others Industries.**



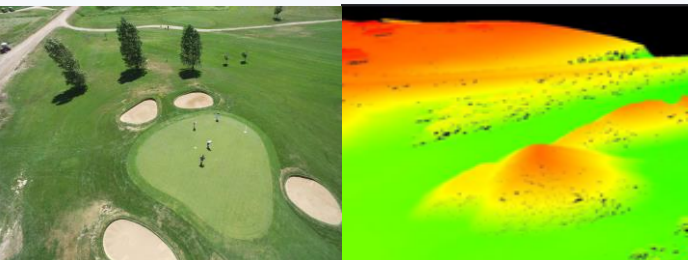
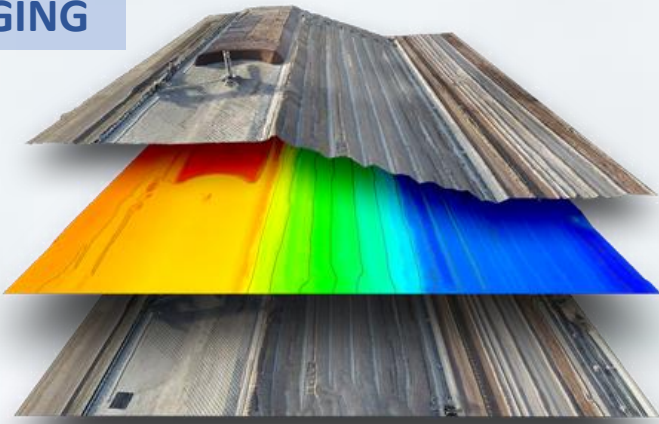
Ensure the **accuracy** of your operation data, optimize planning and implementation with **rigorous mapping**, and deploy **maximum efficiency** and outcomes of each individual portion of your activities on the field.

Provide your engineering team with **powerful modeling** and **analytics, mapping resources** to improve efficiency in daily field actions. **Automate** specialized field inspection with safer **workflows** to recognize all productivity KPI's.

Have all variables of your **licensing, regulatory compliance and safety requirements** through **excellent mapping and analytic procedures, using UAS.**

ENTER THE WORLD OF MOBILE IMAGING

CompassData provides the leading industrial geospatial aerial imaging technology. From fixed to rotary wing drones, custom kits to out of the box solutions, survey to mapping grade accuracy, you name it we can help! We aim to empower our clients to make informed decisions to improve efficiency & accuracy using our UAS/UAV systems for accuracy mapping, survey collection, inspection and more.



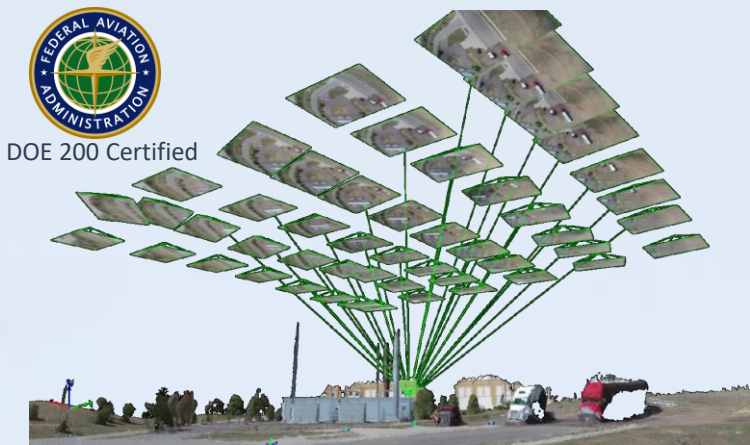
Management Agility and Autonomy



- ✓ Easy Training
- ✓ Independence
- ✓ Monitoring
- ✓ Readiness
- ✓ Whenever needed

Benefits

- ✓ Instant inspection of the ongoing operation
- ✓ Safety & risks recognition for team and asset mobilization
- ✓ Assets inspection agility
- ✓ Environment limits and dynamic recognitions
- ✓ Route/local logistic economy & remote inspections, optimized through real-time visualization
- ✓ 2D and 3D mapping and measurements produced with high performance
 - ✓ Volumetric calculation
 - ✓ Inventory calculation: safer and faster



See your ROI in just a few short days, because mapping with a drone can cut your time on a survey project down by 75% or more! Drones are the perfect solution for accurate, near-ground aerial mapping. This innovative technology is paired with a high resolution camera, enabling detailed mapping capabilities never before possible. Using our UAS/UAV systems produces your ROI quickly.

Contact us to find out how!



CompassDrone™

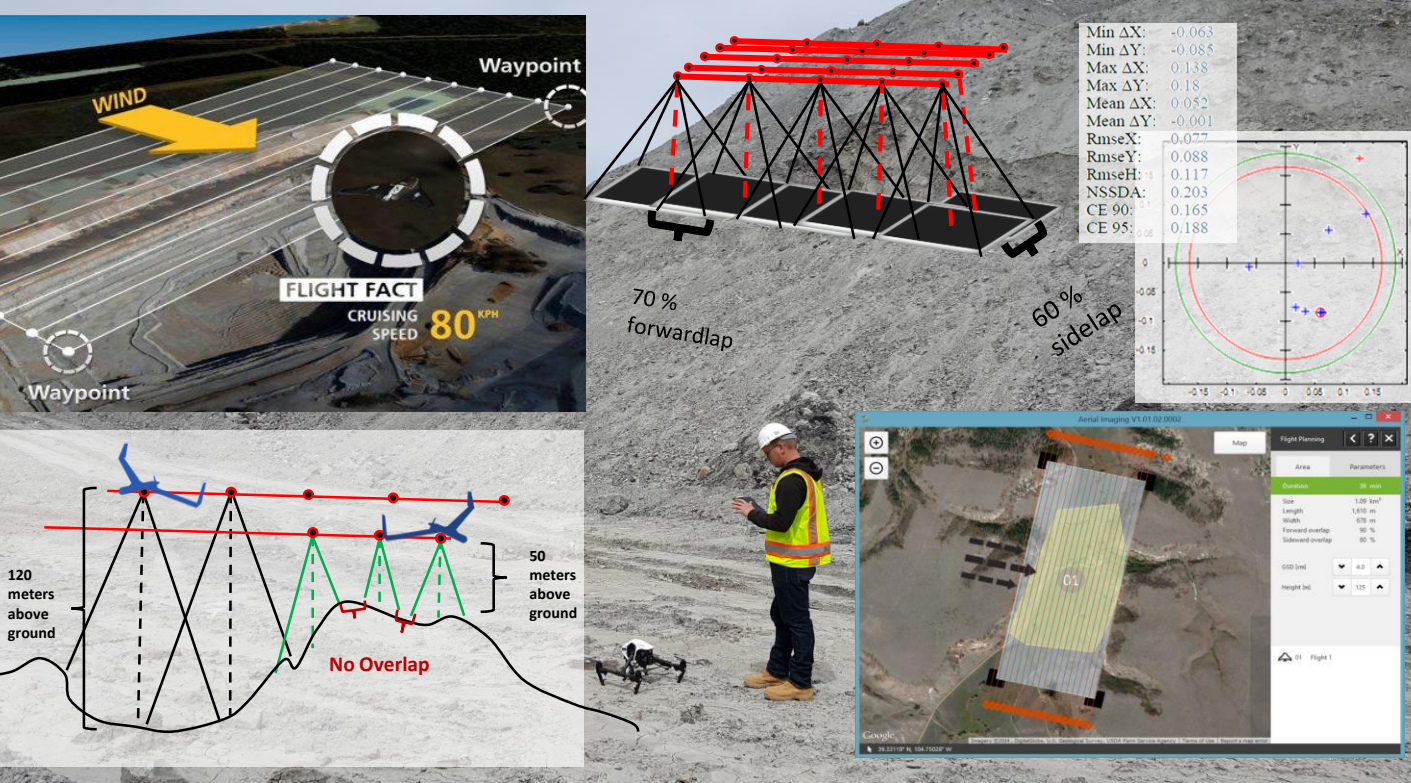
The CompassFamily of businesses introduces CompassDrone™ to provide airframes, software, FAA Section 333 pursuit, services and support to Geospatial Professionals for UAS remote sensing data collection. For industrial drone based Imagery, LiDAR or IR data collection projects, CompassDrone™ can match the right airframe and software to get the results to meet your requirements.

CompassDrone sells DJI®, Trimble Navigation Limited® and Swift Radioplanes® airframes with the processing software to produce products to support the imagery professional. CompassDrone™ is the first Industrial dealer for DJI®, the world's leading drone manufacture.

UAS MAPPING - ACCELERATE TIME-TO-VALUE

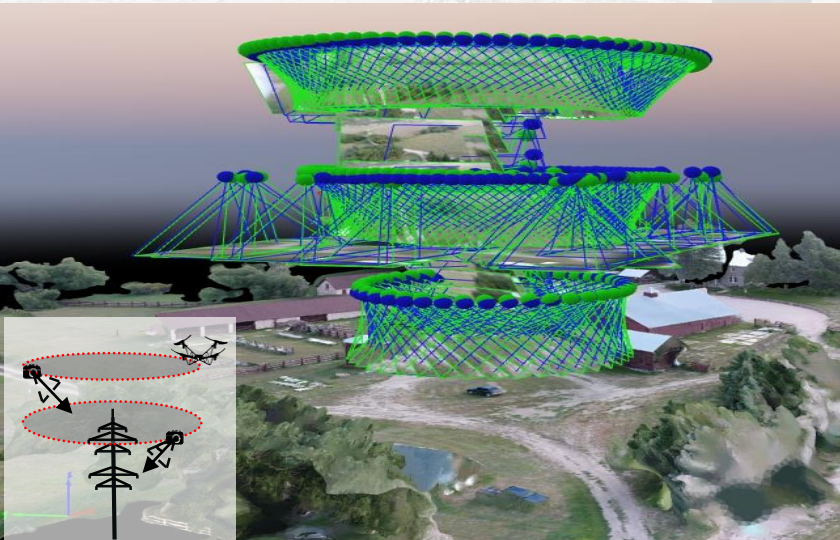
UAS brings a new concept to aerial mapping, with a cost-benefit optimized for agility, readiness, and repetition with a flight platform. From your hands to near-ground flight missions, UAS mapping can collect accurate and high-resolution data for small and medium-area photogrammetry projects. A variety of inexpensive models of UAVs allow the mapping project to be suitable for your budget, within a faster and qualified schedule.

Easy - Immediate - Less Labor Intensive - Cost Savings - Safety - Environmentally Friendly



3D Mapping, Measurement & Volumetry

3D and Volume Extraction, Measurement and Calculation through drone platform is the most modern, accurate, and cost-effective procedure for your territory, production, and assets. Drone platforms are also the safest and fastest method.



The operational team can be trained to set up and execute the flight mission, upload the imagery into the volumetric calculator in seconds, and get the best accuracy possible. The procedure can be repeated easily as often as needed.

The Most Comprehensive UAS Solution

POWERED BY
dji **Trimble.**

