

FEBRUARY 23 - 26, 2022

LONG BEACH, CALIFORNIA

WWW.MOTORCOACHEXPO.COM

- THE. BEST. SHOW. FLOOR.
- 8 OEMs with latest vehicles
- **Nearly 100** top vendors
- Education for you and your team
- **Value:** breakfasts, lunches, dinners, receptions
- Sunny SoCal weather
- All your industry friends. **RECONNECT!**



*California
Dreamin'*

s&MotorcoachNEW

ON IN THE BUS INDUSTRY

POWER

STRY NEWS ▪ OPERATOR NEWS ▪ THE DOCKET ▪ OPINION ▪ CONTACT US ▪ CALENDAR ▪ ADVERTISE

USRATES.COM

2022 EXPO

ARCHIVE

ADVERTISE

SHARE YOUR STORY IDEA WITH US

SUBSCRIBE

f FACEBOOK



Bus & Motorcoach News – 24/7 information for our industry – www.busandmotorcoachnews.com

Today's Agenda

1—Welcome & Intro

Scott Michael

2—Motorcoach Minute

Featuring Kevin Creighton

3—Legislative & Regulatory Report

Ken Presley

Becky Weber

4—EXPO News

Dave Petrillo, Naylor Association Solutions

Mitch Guralnick, UMA EXPO Committee Co-Chair

5—Inflation and Its Impact on the Motorcoach Industry

Scott Michael

6—Overdrive

Time to visit with friends





- **CERTS Refill (\$6 billion)**

- **CERTS Tax Exemption**

- **Sen. Jack Reed (D-RI)**
- **Wednesday Jan. 19, 2022, at 2:30 PM (ET)**
- **Original sponsor of CERTS**
- **Appropriations Committee**
- **Transportation, Housing, and Urban Development Subcommittee**
- **Peter Pan Bus Terminal**
- **One Peter Pan Way**
- **Providence, RI**

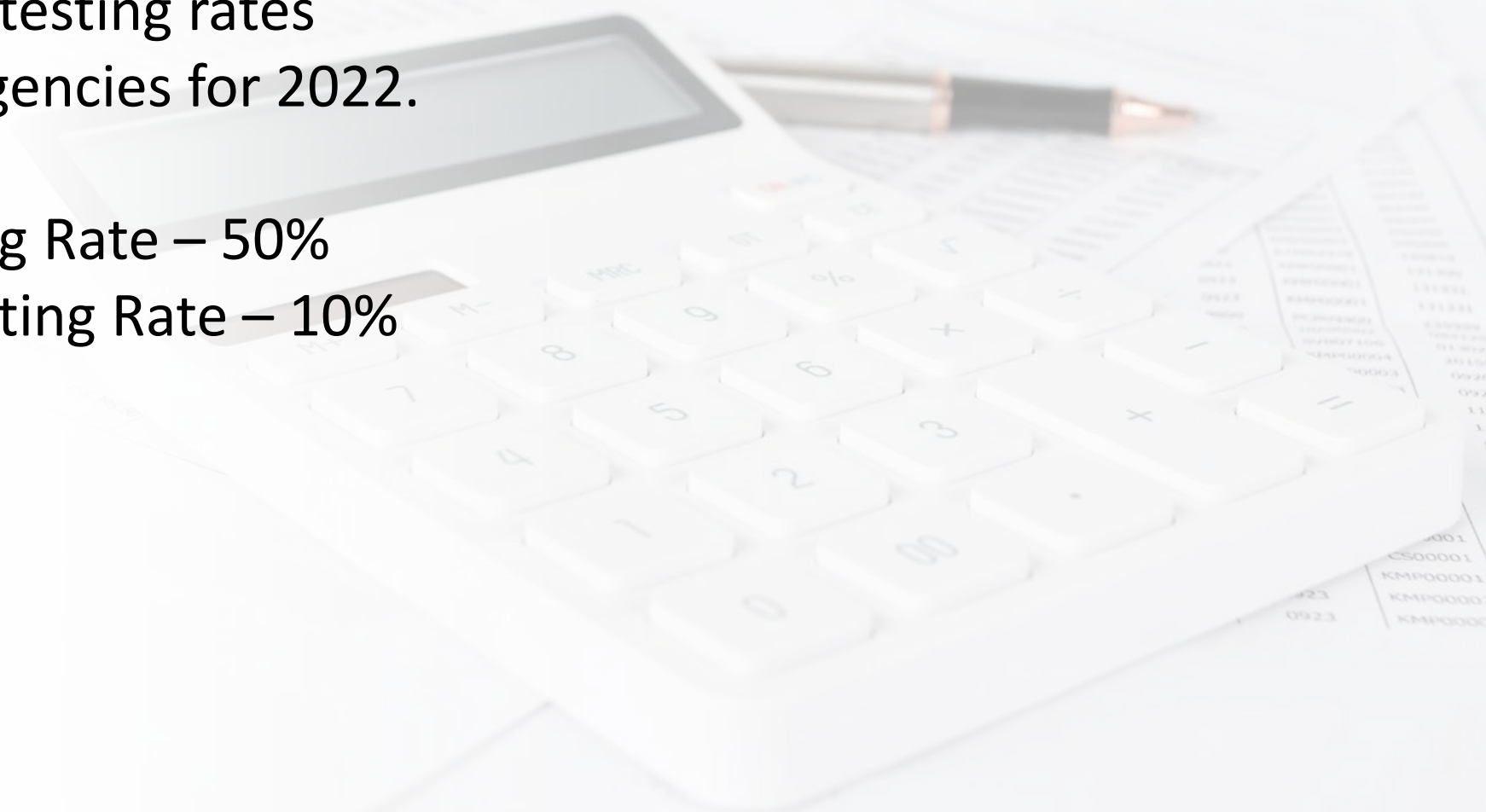


2022 DOT Random Testing Rates

The following outlines the annual minimum drug and alcohol random testing rates established within DOT Agencies for 2022.

2022 Random Drug Testing Rate – 50%

2022 Random Alcohol Testing Rate – 10%





POLICY ISSUES

COVID-19 Economic Relief

Assistance for American Families and Workers

Assistance for Small Businesses

Assistance for State, Local, and Tribal Governments

Assistance for American Industry

Airline and National Security Relief Programs

Coronavirus Economic Relief for Transportation Services (CERTS) Program

Download Payroll Provider Letter Needed for CERTS Application

Information for companies applying from U.S. Territories

Payroll Relief Programs

Tax Policy

Economic Policy

Terrorism and Illicit Finance

Financing the Government

Financial Markets, Financial Institutions, and Fiscal Service

Financial Sanctions

Consumer Policy

International

Small Business Programs

Tribal Affairs

Coronavirus Economic Relief for Transportation Services (CERTS) Program

The Coronavirus Economic Relief for Transportation Services (CERTS) Program is providing eligible transportation service companies with resources to help to maintain payroll, hire back employees who may have been laid off, and cover applicable overhead and operational expenses.

UPDATES ON CERTS QUARTERLY REPORTING

The draft format for the required CERTS quarterly report is posted below under PROGRAM INFORMATION. This PDF document presents the information and questions expected to be included in the official CERTS quarterly report that will be made available to Grantees for completion in the CERTS portal no later than Monday, January 3, 2022.

All Grantees are encouraged to review the draft report format and to submit any questions they may have to Treasury. Based on questions received, Treasury may update the report format before it goes live in the CERTS portal, and will publish a new Frequently Asked Questions to aid Grantees in completing the report.

Grantees are required to submit their first CERTS quarterly report by February 15, 2022, which will cover grantee activities during the time period from the effective date of the CERTS grant agreement through the fourth quarter of calendar year 2021 (December 31, 2021).

The report has two primary purposes. One, it will require grantees to report on how they spent their CERTS award from the date they first received funds through December 31, 2021. Two, it will require Grantees to make certain certifications required by the CERTS statute. Treasury will use the certified data provided to monitor Grantee compliance with the CERTS statute and Grant Agreement.

As noted above, Grantees will need to complete the report on-line using the official CERTS portal through treasury.gov in January 2022. Treasury will never attempt to solicit Grantee information from a webpage not hosted on Treasury.gov, a website not utilizing Treasury's official verification service (ID.me), or from an email address not ending in @treasury.gov or @oig.treas.gov.

For more information on the quarterly reports, you may also refer to paragraph 12 of the CERTS Grant Agreement.

PROGRAM INFORMATION

- Format for CERTS Quarterly Report "new" (12/10/2021)
- CERTS Program Guidelines "Updated" (08/12/2021)
- CERTS Frequently Asked Questions "Updated" (12/10/2021)
- Information on the ID.me identity service
- Information for companies applying from U.S. Territories
- IRS information on the tax treatment of CERTS grants
- Form of Standard CERTS Grant Agreement for All Approved Grantees
- CERTS Employee Recall and Rehire Information
- List of CERTS Participants with Amounts Provided
- Treasury Completes \$2 Billion in Recovery Fund Payments to Transportation Businesses



February 15, 2022



Section 1: Verification of Grantee Information

Section 2: Total Funds Used On or Before December 31, 2021

Section 3: Organizational Use of Funds

Section 4: Detail on Use of Funds

Section 5: Recalls & Rehires Certification

Section 6: Other Certifications

Section 7: Changes in Control, Bankruptcy, and Legal Actions

Section 8: Feedback

Section 9: Certified Submission

Format for CERTS Quarterly Report *new* (12/10/2021)



Russian Cyber Attacks

- ***Six recommendations:***
 - Require multi-factor authentication for all users, without exception.
 - Require accounts to have strong passwords and do not allow passwords to be used across multiple accounts or stored on a system to which an adversary may have access.
 - Enable strong spam filters.
 - Update software, including operating systems, applications, and firmware on IT network assets, in a timely manner.
 - Disable all unnecessary ports and protocols.
 - Use industry recommended antivirus programs.

2022 UMA INTERNATIONAL DRIVER COMPETITION

FEBRUARY 24-25

REGISTRATION IS NOW OPEN!!

https://docs.google.com/forms/d/e/1FAIpQLSeMH_dEEZLAmiTNU1r8Km8jA8B-TpWTUrrZjfZ1IKUqLyFRQ/viewform?usp=sf_link



FEBRUARY 23 - 26, 2022
LONG BEACH, CALIFORNIA

WWW.MOTORCOACHEXPO.COM



Mitch Guralnick

UMA EXPO Co-Chair
Prevost

Dave Petrillo

Naylor Association
Solutions

FEBRUARY 23 - 26, 2022
LONG BEACH, CALIFORNIA

WWW.MOTORCOACHEXPO.COM



EXPO protocols at this time:

Masks required
No vaccine proof
No testing



FEBRUARY 23 - 26, 2022
LONG BEACH, CALIFORNIA

WWW.MOTORCOACHEXPO.COM



FEBRUARY 23 - 26, 2022
LONG BEACH, CALIFORNIA

WWW.MOTORCOACHEXPO.COM



Renaissance Long Beach Hotel
UMA Rate: \$179/night



Hyatt Regency Long Beach,
Long Beach, CA
UMA Rate – \$199/night

Booking more than two rooms at the Hyatt?
Call (800)233-1234.



FEBRUARY 23 - 26, 2022
LONG BEACH, CALIFORNIA

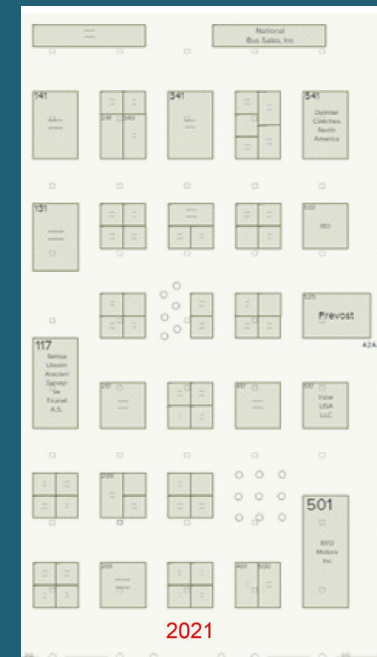
WWW.MOTORCOACHEXPO.COM



**LONG
BEACH
2022**



**ORLANDO
2021**



FEBRUARY 23 - 26, 2022
LONG BEACH, CALIFORNIA

WWW.MOTORCOACHEXPO.COM



LONG BEACH 2022

Nearly **100 & counting**

Total exhibit space **40,000 sq feet**

24,000 sq feet by OEMs

15-20 coaches on the floor

*Five times
more coaches!*

ORLANDO 2021

About 70 exhibitors

Total exhibit space 13,000 sq feet

4,600 sq feet by OEMs

3-4 coaches on the floor

FEBRUARY 23 - 26, 2022

LONG BEACH, CALIFORNIA

WWW.MOTORCOACHEXPO.COM



5Star Specialty Programs
ABC Companies
Amaya Astron Seating
AMBEST Inc.
American Bus Association
Amerifuel
Atlantic City/Meet AC
Atlantic Union Equipment Finance, Inc.
Auto-Motion Shade Inc
Bitimec International Inc
BITZER US Inc.
Bridgestone Americas Tire Operations, LLC
(BATO)
Budget Truck and Auto, Inc
Bus & Motorcoach News
BUSBooks
BusGraphix
busHive
BUSTEXTIL
BusRates.com

BYD Motors Inc
Camira Fabrics
Carolina Casualty
CommercePayments Prepaid Expense Card
Cummins Inc.
Curved Glass Distributors
Daimler Coaches North America
DIA Solutions Inc.
Distinctive Systems Inc.
Executive Coach Builders, Inc.
Gerflor
Global Charter Services, Inc.
Huntington
Icomera US
Interclean Equipment
Irizar USA LLC
Kelly Anderson Group
Kiel NA LLC
Kirk's Automotive Inc.
Lancer Insurance Company

Lang US LP
MASATS S.A.
Motor Coach Industries
Museum of Bus Transportation
National Association of Motorcoach
Operators
National Interstate Insurance
Odyssey Battery
Pana-Pacific
Power Trade Media
Prestolite Electric
Prevost
Proheat
Rally OurBus
REI
Relational Bus Systems
RLI Transportation
Rosco Vision
RRL Insurance Agency
Saucon Technologies Inc.

Scalabros SRL
Schaeffer's Specialized Lubricants
Shriver Transportation Insurance Agency,
LLC
SPAL USA
Steril-Koni USA, Inc.
SubOut
Temsä Skoda Sabancı Ulaşım Araçları A.Ş.
TIB Transportation Insurance Brokers
Transportation Advisors / EZ-DrugTest
Turbo Images
Turbo Studio
United Motorcoach Association
Vignal Sesaly
Webb Wheel Products
Wells Fargo Equipment Finance
Worldwide Monochem

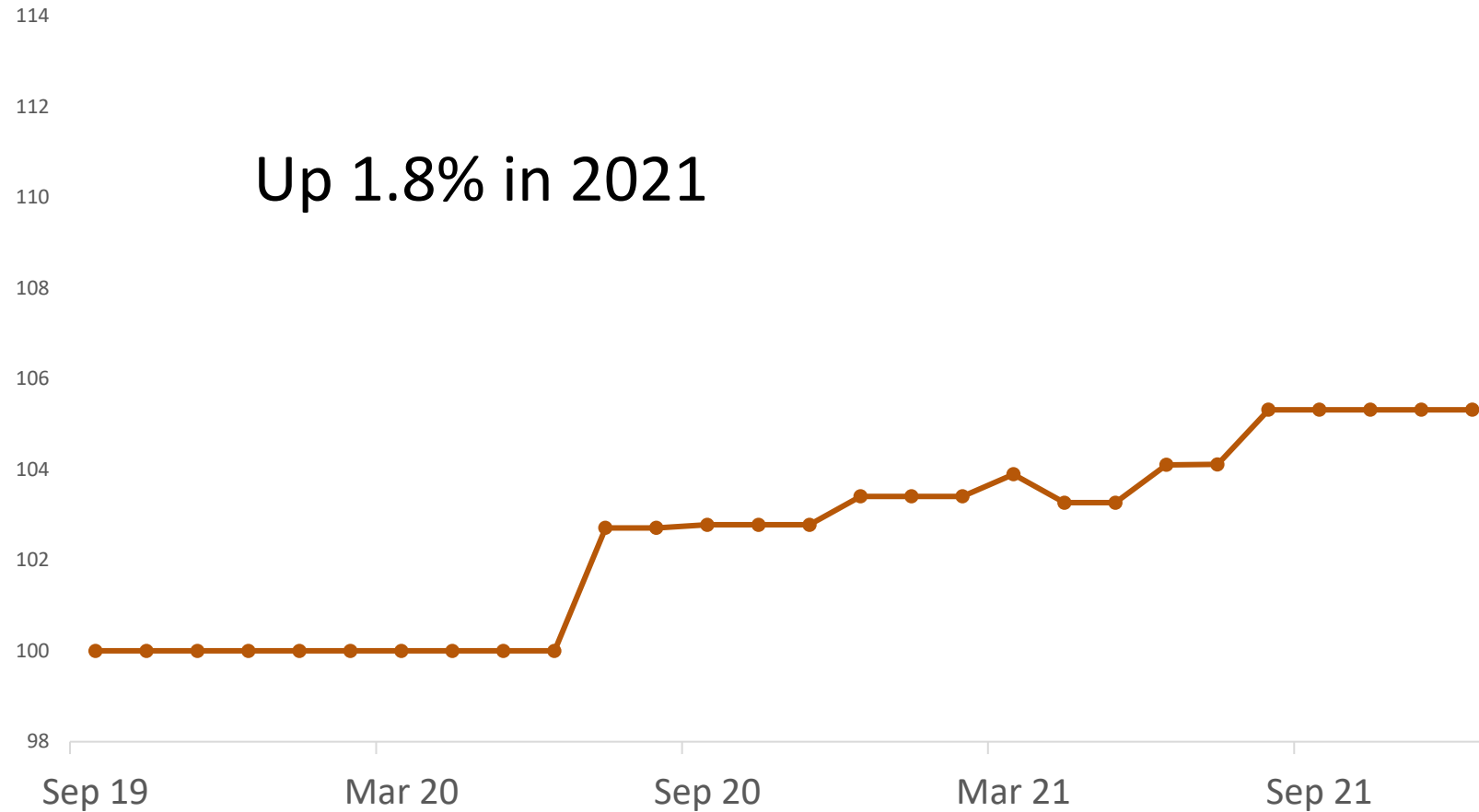


Inflation

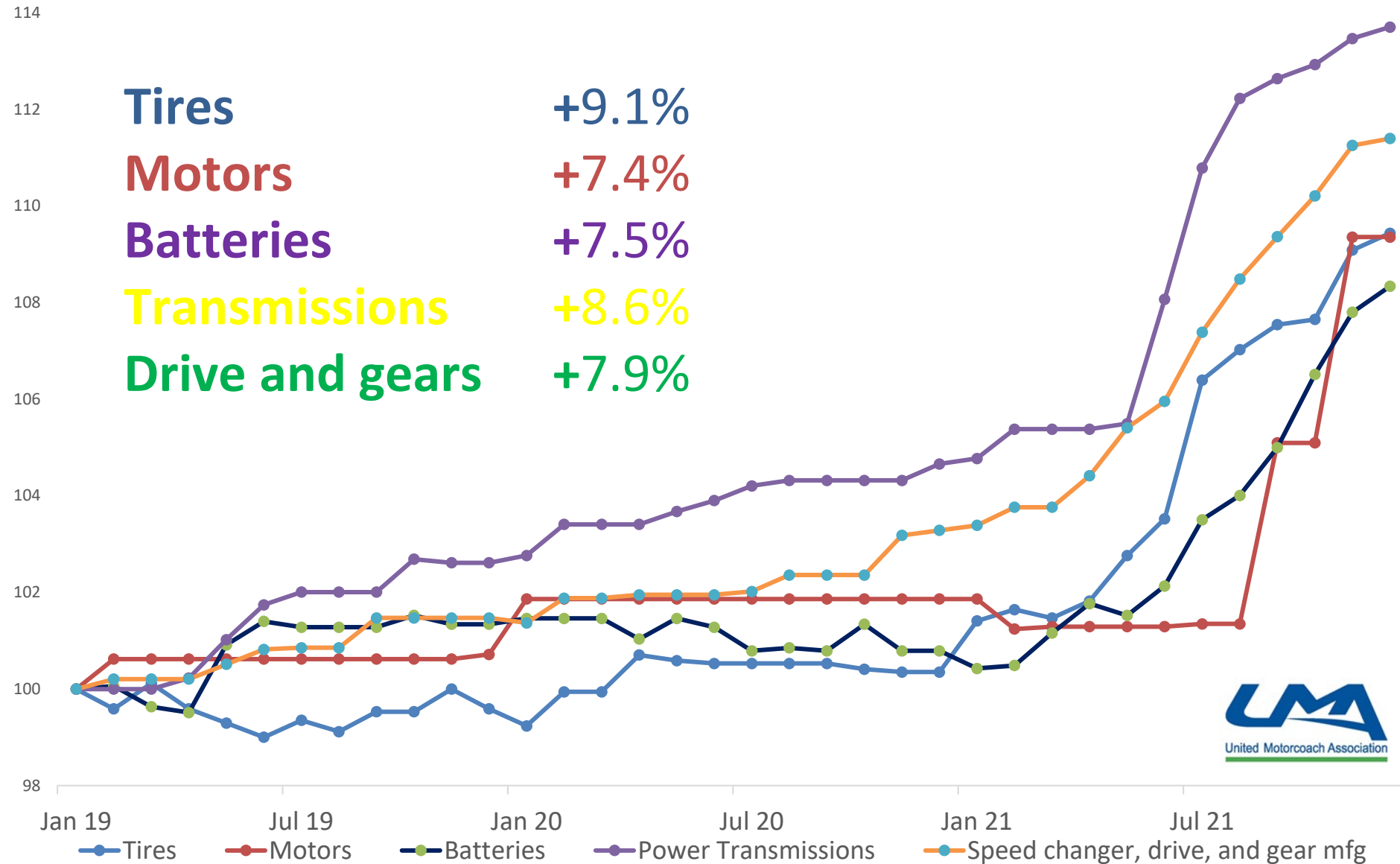
Impact on the Motorcoach Industry

January 2022

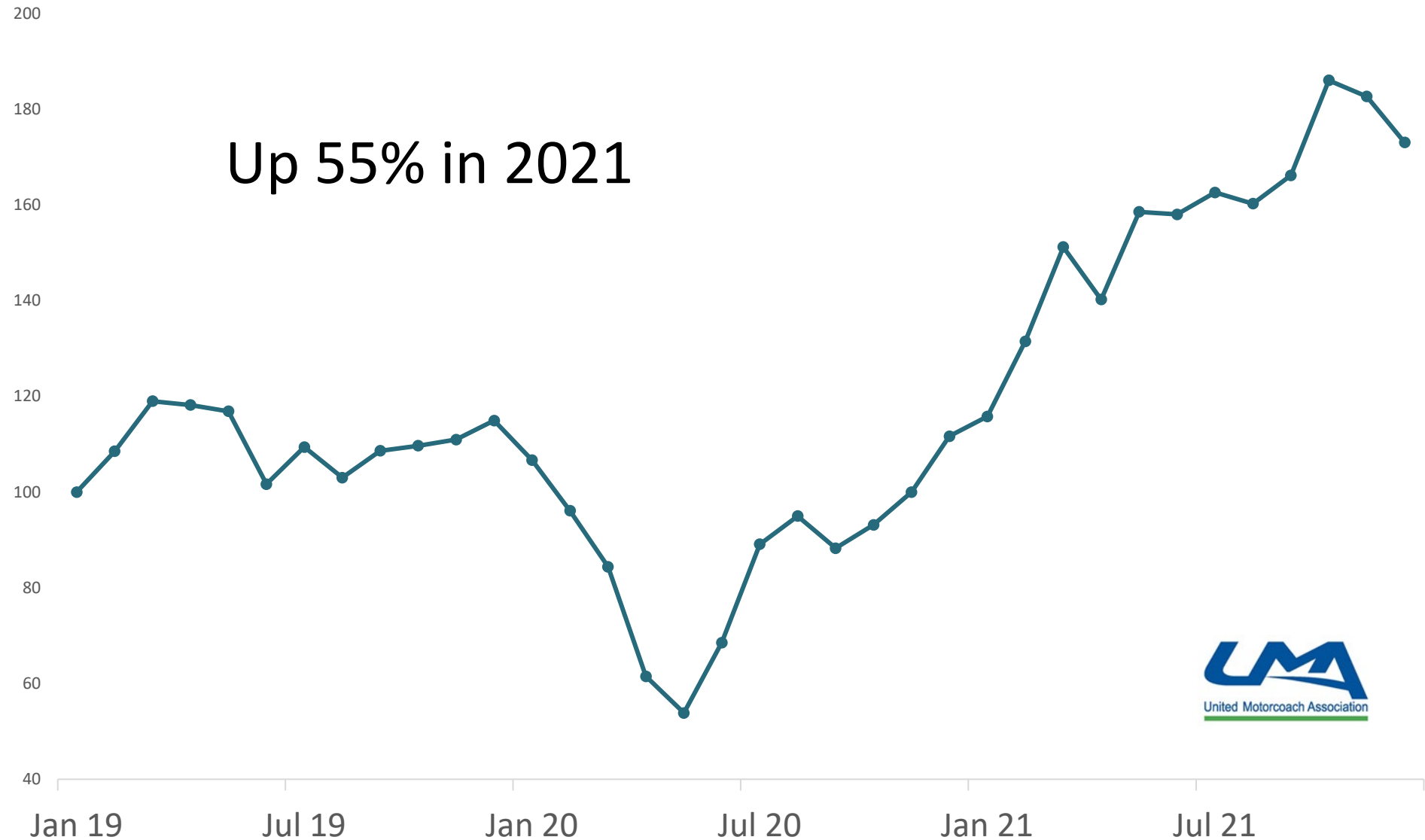
Cost of Motorcoaches



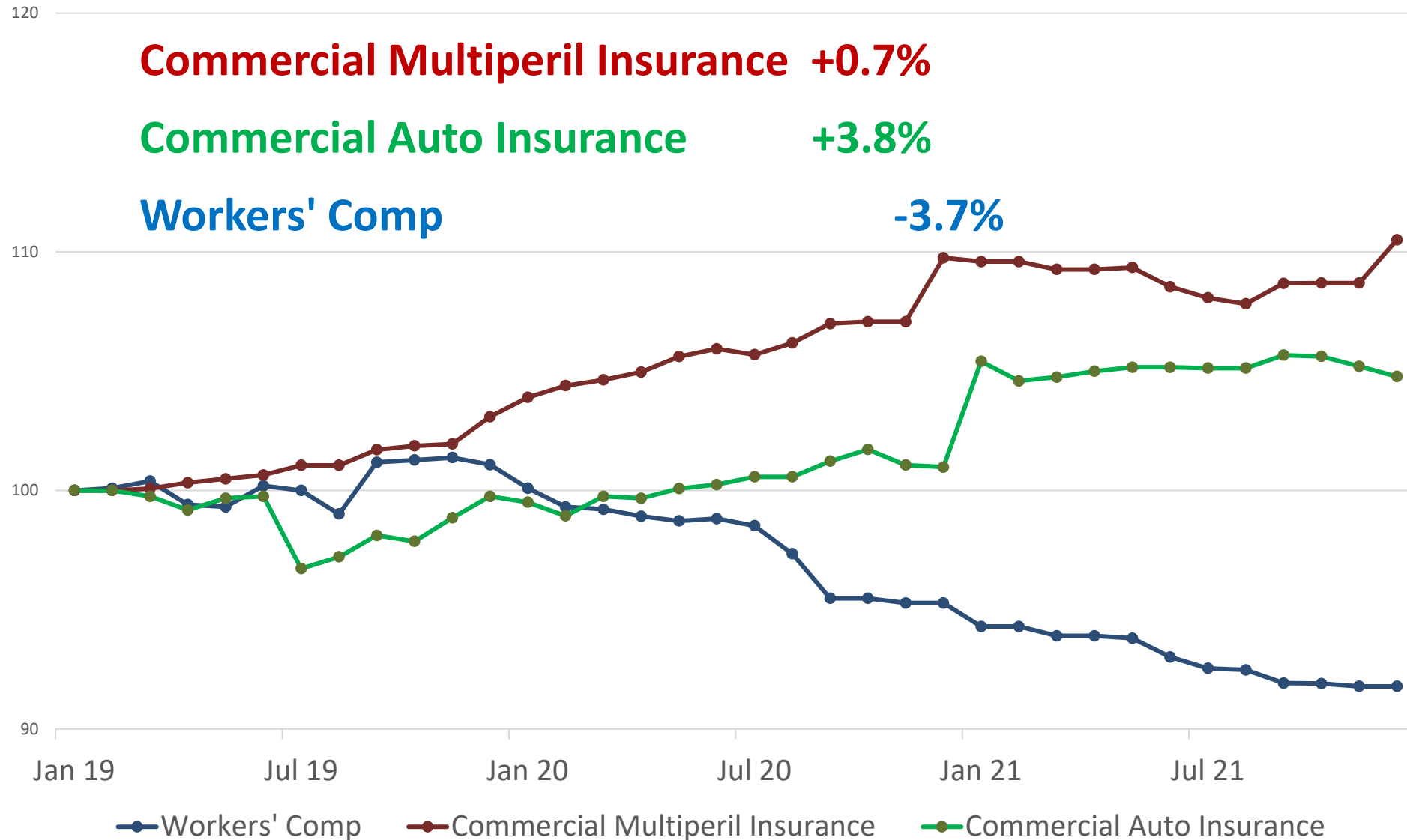
Cost of Motorcoach Parts



Cost of Diesel



Insurance Cost



Region 1



Tie – Runoff election ends January 21, 2022



Tom Giddens
Pacific Coachways



Lisa Allen
Amador Stage Lines