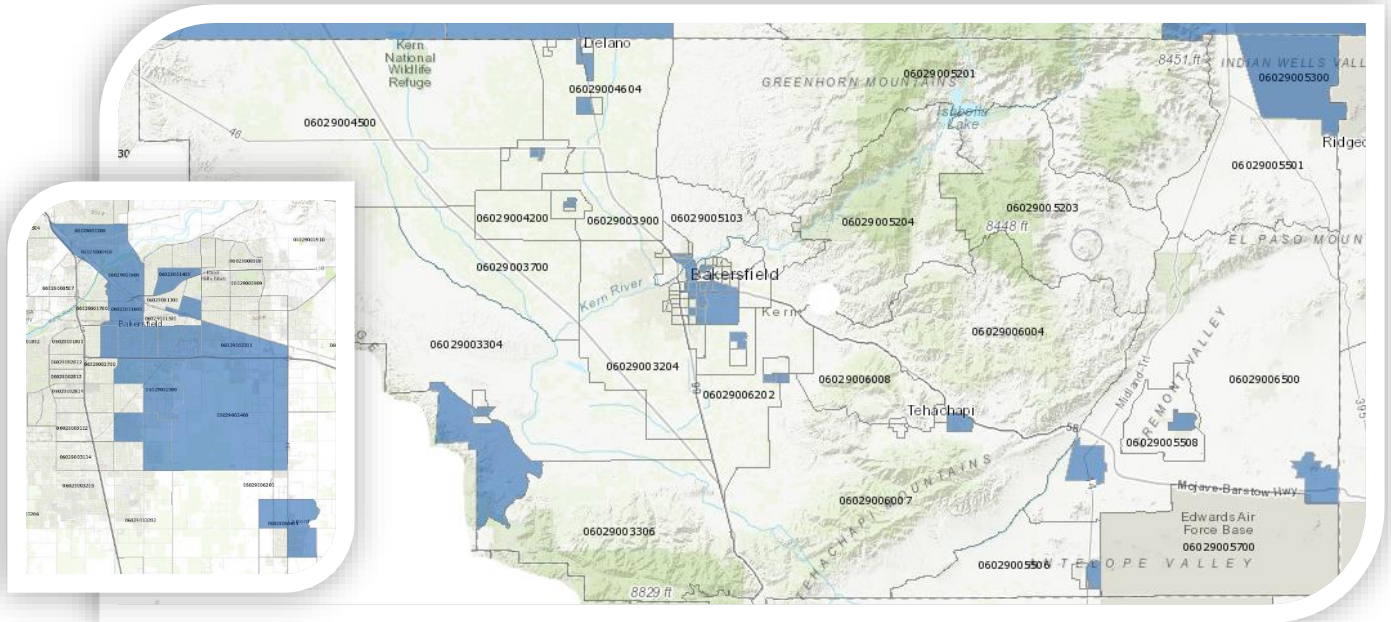


# Kern County Opportunity Zones



<https://www.cdfifund.gov/Pages/Opportunity-Zones.aspx>

*All or portions of Bakersfield, Tehachapi, Mojave, California City, Boron, Ridgecrest, Rosamond, and Taft have been designated as Opportunity Zones.*

The federal Tax Cuts and Jobs Act of 2017 created an economic development tool known as “opportunity zones”. The program is designed to encourage long-term investments in low-income areas. The goal is to get capital to these struggling census tracts. The program gives patient investors and developers significant tax incentives in exchange for long-term investment in distressed or low-income areas.

“This opportunity zone program has the potential to be the largest community investment program in the country, by tapping into trillions of dollars in capital gains held by private investors to create a new source of economic growth for hundreds of lower-income communities around the country. Under this first round, opportunity zones have been designated in 18 states, including California. The list of designations includes 57 counties in California and 35 areas in Kern County. Large portions of downtown Bakersfield and the east side have been designated as opportunity zones.”  
*(The Californian, July 2018)*

## Kern County Designated Opportunity Zones

GEOID	County	Census Tract	Poverty Rate	Median Family Income	Communities Located in Census Tract
06029000200	Kern	Census Tract 2	47.7	25,815	Bakersfield
06029000300	Kern	Census Tract 3	42.7	26,897	Bakersfield
06029000400	Kern	Census Tract 4	45.3	24,158	Bakersfield
06029000600	Kern	Census Tract 6	47.4	22,230	Bakersfield
06029001202	Kern	Census Tract 12.02	59.7	22,045	Bakersfield
06029001400	Kern	Census Tract 14	60.2	23,189	Bakersfield
06029001600	Kern	Census Tract 16	32.5	30,547	Bakersfield
06029001902	Kern	Census Tract 19.02	36.4	29,665	Bakersfield
06029002000	Kern	Census Tract 20	44.6	26,470	Bakersfield
06029002100	Kern	Census Tract 21	51.4	23,286	Bakersfield
06029002200	Kern	Census Tract 22	59.0	21,535	Bakersfield
06029002301	Kern	Census Tract 23.01	34.9	27,297	Bakersfield
06029002302	Kern	Census Tract 23.02	40.0	30,962	Bakersfield
06029002400	Kern	Census Tract 24	25.8	38,235	Bakersfield
06029002500	Kern	Census Tract 25	46.3	28,161	Bakersfield
06029002600	Kern	Census Tract 26	29.5	35,703	Bakersfield
06029003103	Kern	Census Tract 31.03	25.6	34,981	Bakersfield
06029003121	Kern	Census Tract 31.21	33.0	37,893	Bakersfield
06029003303	Kern	Census Tract 33.03	34.0	44,615	Taft
06029003500	Kern	Census Tract 35	21.2	50,266	Taft
06029004101	Kern	Census Tract 41.01	22.6	49,826	Shafter
06029004401	Kern	Census Tract 44.01	23.6	47,748	Wasco
06029004402	Kern	Census Tract 44.02	57.1	22,252	Wasco
06029004701	Kern	Census Tract 47.01	41.2	33,042	McFarland
06029004800	Kern	Census Tract 48	50.2	25,908	Delano
06029005003	Kern	Census Tract 50.03	37.0	28,919	Delano
06029005300	Kern	Census Tract 53	33.5	30,938	Ridgecrest
06029005507	Kern	Census Tract 55.07	20.2	62,346	California City
06029005600	Kern	Census Tract 56	33.4	38,859	Boron
06029005802	Kern	Census Tract 58.02	29.8	49,167	Rosamond
06029005900	Kern	Census Tract 59	32.2	42,056	Mojave
06029006100	Kern	Census Tract 61	23.1	56,940	Tehachapi
06029006303	Kern	Census Tract 63.03	33.1	32,539	Arvin
06029006304	Kern	Census Tract 63.04	35.7	25,087	Arvin
06029006401	Kern	Census Tract 64.01	39.3	29,659	Lamont

For more information on sites in Kern County, contact:

Melinda Brown

Kern EDC

661-862-5058