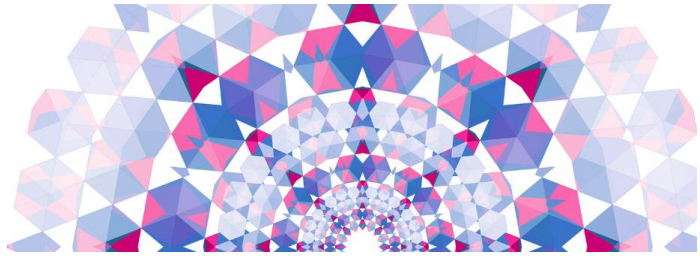


2019 Kaleidoscope Fund

GRANT PROCESS NOW OPEN



KALEIDOSCOPE GRANT

The Kaleidoscope Fund is a granting program offered by the Lutheran Church Extension Fund (LCEF), designed to support eligible Lutheran Church-Missouri Synod (LCMS) ministries with outreach and expansion. This year, LCEF is narrowing the focus of impact for the grant to LCMS K-8 elementary schools.

Lutheran schools play a critical role in impacting the community through Christian education.

Funds will be granted in amounts between **\$15,000 and \$75,000**. Those eligible for the grant will be asked to submit a grant proposal summary for review by committee.

The 2019 grant process began Monday, April 1.
The proposal submission deadline will be **May 31, 2019**.

Information is available on:

www.lcef.org/kaleidoscope.

