

RE-ENTRY PROGRAM

NEED HELP?

Have you or your loved one been released
from Federal, State or County **PRISON**?

Call (814) 459-4581 x463

WWW.GECAC.ORG

Education/Training



Important Documents



Employment



Housing/Shelter



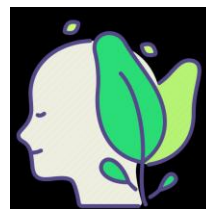
Healthcare



Drugs/Alcohol Treatment



Mental Health Treatment



Clothing



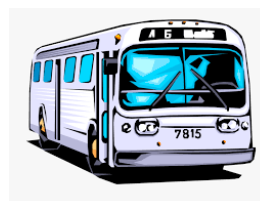
Place of Worship



Food Stamps



Transportation



Family Assistance

