

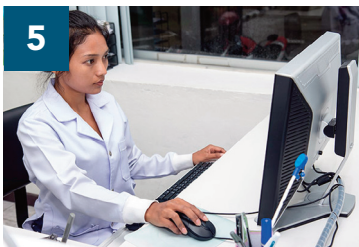
Module	Course Title and Description
<div data-bbox="94 657 159 720">1</div> 	<p>Contracting With Payers: Demonstrating Your Value</p> <p>In the current fee for service model, understanding how to partner with the various payers relevant to home-based primary care is crucial to sustaining a house call program. This eLearning module will enable you to identify the key payers, effectively negotiate contracts, and identify data and quality metrics to demonstrate your value.</p> <p>15 min. Cost \$25 CME Credit .25 Available June, 2018</p>
<div data-bbox="94 1056 159 1119">2</div> 	<p>Building An Effective HBPC Team</p> <p>Caring for homebound patients with multiple comorbidities has many challenges that go above and beyond the normal scope of practice. Not only is there complex disease management, but patients have many psychosocial challenges that need attention. Having an interdisciplinary home-based primary care (HBPC) team (versus a multidisciplinary team) impacts the care and resources you're able to provide. This eLearning module explains characteristics of the different teams, as well as the pros and cons for each type, so you can apply effective team strategies within your program.</p> <p>15 min. Cost \$25 CME Credit .25 Available June, 2018</p>
<div data-bbox="94 1581 159 1644">3</div> 	<p>Legal Compliance for Home-Based Primary Care</p> <p>Understanding compliance guidelines governed by the Office of Inspector General is challenging but understanding how to overcome compliance challenges for the medically homebound can be even more complex. This eLearning module describes how compliance applies to the field of home-based primary care (HBPC), identifies the unique challenges faced by HBPC providers, and gives you the tools needed to establish a compliance program and guidelines to utilize in your own practice.</p> <p>15 min. Cost \$25 CME Credit .25 Available June, 2018</p>



Documentation for House Calls: Avoiding Negative Audit Outcomes

House call practices remain a focus of the Office of Inspector General and Centers for Medicare & Medicaid Services resulting in a higher likelihood of being audited. This eLearning module explains “medical necessity”, describes required documentation components, and reviews billing and coding best practices so you can avoid common documentation errors and achieve positive audit outcomes.

30 min. | Cost \$49 | CME Credit .5 | Available July, 2018



Advanced Coding And Billing: Beyond E/M For House Calls

House call practices face many challenges when trying to survive financially in our current fee-for-service world. Chances are, your practice may not be taking full advantage of being reimbursed for the hard work being done by providers, including many services beyond the standard evaluation and management (E/M) codes. This eLearning module will review in detail the requirements for Transitional Care Management, Chronic Care Management, Advance Care Planning, and Prolonged Services so you can feel confident when billing for these services in your practice.

30 min. | Cost \$49 | CME Credit .5 | Available July, 2018



HCC Coding For House Calls

Risk adjustment is becoming the payment structure of the future as more payers move towards this model of payment reform. HCC (Hierarchical Condition Category) is determined by demographics, health status and the diagnosis options selected. Providers and billers must understand how critical it is to document and code to the highest level of specificity possible. This eLearning module explains risk score calculations and will help you develop a workflow to accurately assign HCC codes.

15 min. | Cost \$25 | CME Credit .25 | Available July, 2018

Module

Course Title and Description



7

Making Advanced Payment Models Work for House Calls

Many house call practices struggle to understand how to meet the requirements to participate in MACRA (Medicare Access and CHIP Reauthorization Act), including MIPS (Merit-Based Incentive Program) and CPC+ (Comprehensive Primary Care Plus). Incorporating use of advanced payment models is crucial to sustaining your house call program and will enable you to provide additional services or enhancements. This eLearning module will explore MIPS and CPC+ and discuss the impact these programs can make on your practice.

30 min. | Cost \$49 | CME Credit .5 | Available July, 2018



8

Medication Management in Home-Based Primary Care

Nearly 20% of community dwelling adults age 65 and older take ten or more different medications. HBPC providers face many challenges when managing the over- and under-prescribing of these medications. This eLearning module will describe the challenges faced by both HBPC providers and patients and explain essential steps to manage medications in home-based patients.

30 min. | Cost \$49 | CME Credit .5 | Available August, 2018



9

Safety Strategies for Home-Based Primary Care Providers

Providing care in a patient's home presents a unique array of safety risks unlike a traditional outpatient setting. Understanding such risks as pets, weapons, travel complications, and weather are essential to being able to employ effective strategies for keeping HBPC providers safe. This eLearning module will describe how to minimize risks before, during, and after a home visit.

15 min. | Cost \$25 | CME Credit .25 | Available August, 2018

10



Management of Patients with Dementia in HBPC

HBPC providers often provide care to patients with various stages of dementia. These patients often experience noncognitive psychiatric and behavioral disturbances, making care and delivery of primary care services challenging. This eLearning module will present strategies for providing HBPC services to patients with dementia that address medical comorbidities, promote safety at home, address and reduce behavioral disturbances, and support families/caregivers.

15 min. | Cost \$25 | CME Credit .25 | Available August, 2018

11



Infection Control in Home-Based Primary Care

Each year 75,000 people die from healthcare-acquired infections. Many of us know infection control is the first directive for all providers, but what you may not realize is that home-based primary care presents some unique infection risks. Precautions must be taken to prevent putting patients, family members, caregivers, and providers at risk for infection. This eLearning module will identify the risks associated with home-based care and review strategies that can be implemented before, during, and after a home visit to minimize risk of infection.

15 min. | Cost \$25 | CME Credit .25 | Available August, 2018

12



Telemedicine in Home-Based Primary Care

Telemedicine is the use of two-way, real time interactive communication between the patient and the provider at a distant site to deliver curative medicine. However, many providers have not implemented telemedicine due to lack of experience using the technology to evaluate patients and coding these interactions accurately for billing purposes. This eLearning module describes possible models for practicing telemedicine and strategies for incorporating it into your HBPC practice.

15 min. | Cost \$25 | CME Credit .25 | Available August, 2018