

EXCLUSIVE FIFTH AVENUE RETAIL SUBLEASE OPPORTUNITY

♦ ♦ ♦
*RARELY AVAILABLE
RETAIL JEWEL BOX*
♦ ♦ ♦

**645 FIFTH
AVENUE**

BETWEEN EAST 51ST AND 52ND STREETS





Currently Furla

1,200 SF

Ground Floor

2,200 SF
Total

1,000 SF

Lower Level

FRONTAGE:

20 FT

CEILING:

18 20 FT

TERM:

Sublease through 9/30/2030

NEIGHBORS:

H. Stern

Victoria Secret

Nike

Longchamp

Jimmy Choo

Cartier

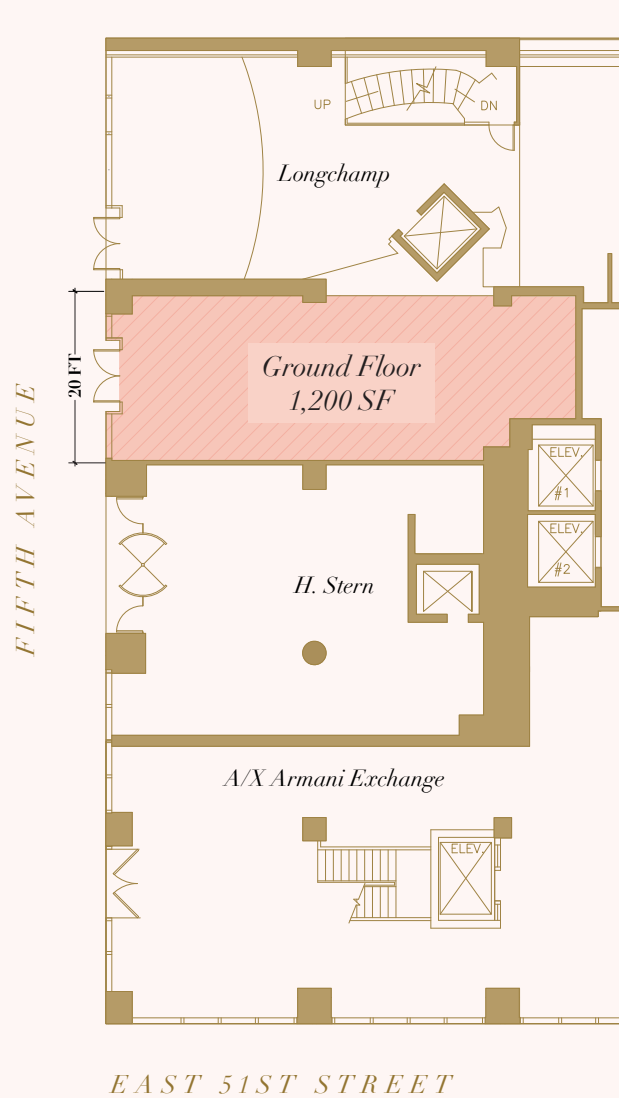
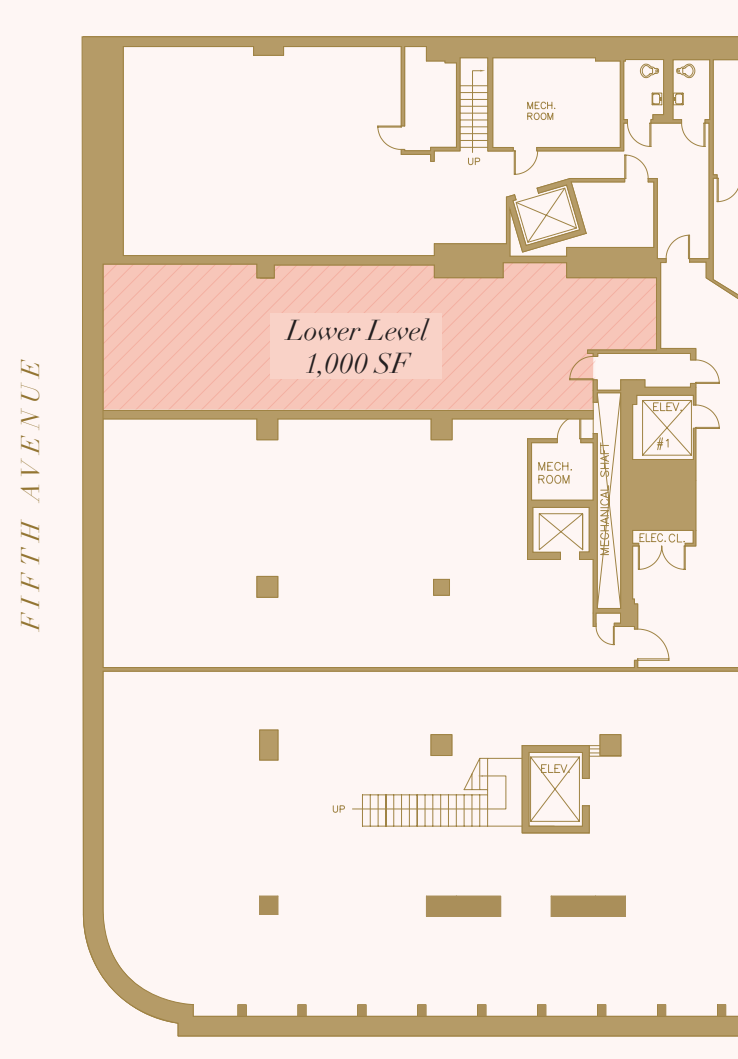
Saks Fifth Avenue

Versace

Salvatore Ferragamo

Zara

Floorplans

GROUND LEVEL: 1,200 SF**LOWER LEVEL: 1,000 SF**

Neighboring Retailers



ACROSS FROM ROCKEFELLER CENTER:
350,000 DAILY VISITORS.

SITUATED AT THE
EPICENTER OF MIDTOWN MANHATTAN'S
DENSEST OFFICE MARKET:
767 BUILDINGS TOTALING 243 MILLION SQ. FT.
OF OFFICE SPACE

LOCATED ON THE
WORLD'S MOST FAMOUS SHOPPING AND
TOURIST THOROUGHFARE WITH
INCREDIBLE PEDESTRIAN TRAFFIC:
OVER 11,000 PEDESTRIANS PER HOUR AT PEAK PERIODS;
2,200 HOTEL ROOMS IN THE IMMEDIATE VICINITY

645 FIFTH AVENUE

BETWEEN EAST 51ST AND 52ND STREETS

PLEASE CONTACT US FOR INQUIRIES:

MOLLY BEAL

212 698 2658

MOLLY.BEAL@CUSHWAKE.COM

ALAN SCHMERZLER

212 841 5930

ALAN.SCHMERZLER@CUSHWAKE.COM



**CUSHMAN &
WAKEFIELD**

©2019 CUSHMAN & WAKEFIELD. ALL RIGHTS RESERVED. THE INFORMATION CONTAINED IN THIS COMMUNICATION IS STRICTLY CONFIDENTIAL. THIS INFORMATION HAS BEEN OBTAINED FROM SOURCES BELIEVED TO BE RELIABLE BUT HAS NOT BEEN VERIFIED. NO WARRANTY OR REPRESENTATION, EXPRESS OR IMPLIED, IS MADE AS TO THE CONDITION OF THE PROPERTY (OR PROPERTIES) REFERENCED HEREIN OR AS TO THE ACCURACY OR COMPLETENESS OF THE INFORMATION CONTAINED HEREIN, AND SAME IS SUBMITTED SUBJECT TO ERRORS, OMISSIONS, CHANGE OF PRICE, RENTAL OR OTHER CONDITIONS, WITHDRAWAL WITHOUT NOTICE, AND TO ANY SPECIAL LISTING CONDITIONS IMPOSED BY THE PROPERTY OWNER(S). ANY PROJECTIONS, OPINIONS OR ESTIMATES ARE SUBJECT TO UNCERTAINTY AND DO NOT SIGNIFY CURRENT OR FUTURE PROPERTY PERFORMANCE.