

# Economic Impact of Wind and Solar Energy in Illinois and the Potential Impacts of Path to 100 Legislation

## COUNTY COMPARISONS AND COMMUNITY BENEFITS

**5** counties are now receiving more than \$20 million combined annually in property tax revenue

MCLEAN COUNTY HAS RECEIVED

**\$53M** TOTAL



LEE COUNTY HAS RECEIVED

**\$30.9M** TOTAL



LASALLE COUNTY HAS RECEIVED

**\$30.4M** TOTAL



HENRY COUNTY HAS RECEIVED

**\$22.9M** TOTAL



BUREAU COUNTY HAS RECEIVED

**\$21.5M** TOTAL

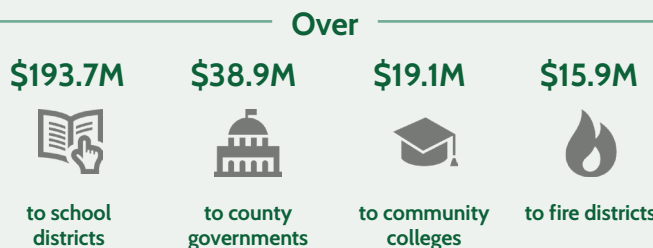


As of 2019

## WIND AND SOLAR PROJECT PROPERTY TAXES

Over **\$306M** in total since 2003

Over **\$41.4M** in 2019 alone

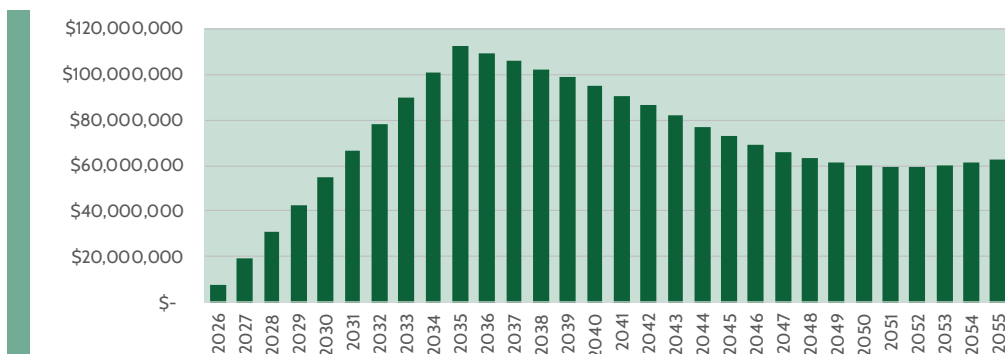


**21** Illinois counties have received the property tax benefits of utility-scale wind and/or solar

*Based on analysis of historical property tax records*

## PROJECTED UTILITY-SCALE WIND AND SOLAR PROPERTY TAXES

**\$2.46B** over the lifetime of the projects



PROPERTY TAXES FROM  
PROJECTED UTILITY-SCALE  
WIND AND SOLAR  
PROJECTS RESULTING  
FROM PATH TO 100 ACT

# Economic Impact of Wind and Solar Energy in Illinois and the Potential Impacts of Path to 100 Legislation

PATH TO 100 ACT  
EXPANDED ILLINOIS RENEWABLE  
PORTFOLIO STANDARD REQUIREMENT:

40%  
BY 2030

## ECONOMIC IMPACT

**\$8.27B**

in increased total economic  
impact during construction

**\$571M**

per year in increased total  
economic impact during  
operations

## JOB CREATION

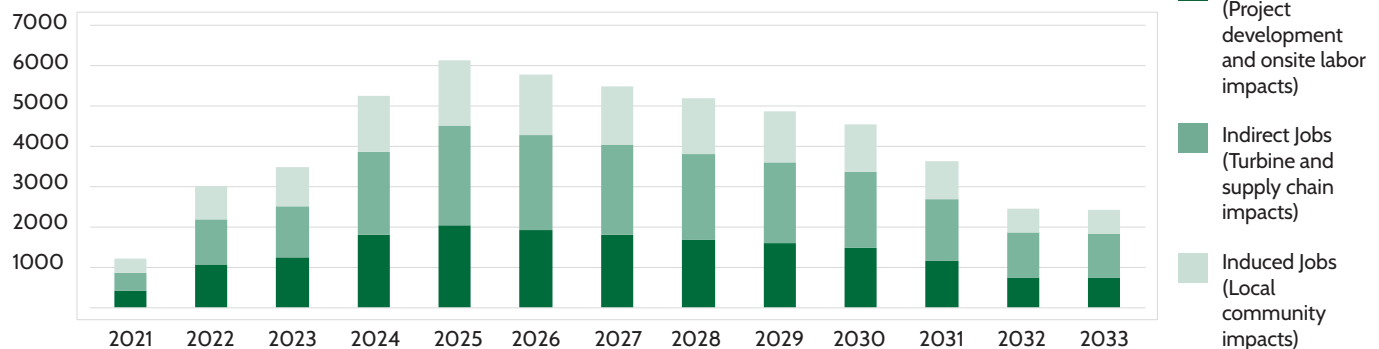


**53,298** jobs created or supported  
during construction periods\*

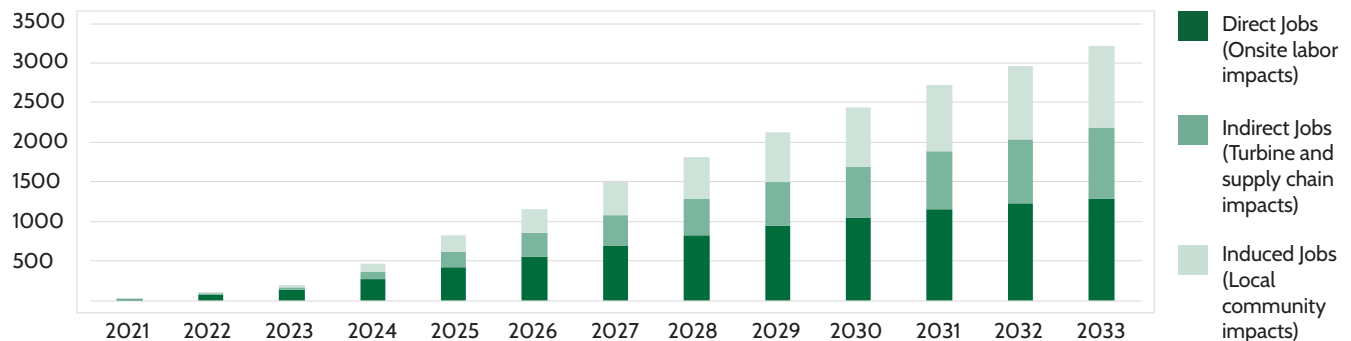


**3,215** jobs created or supported  
annually during operations

## JOB GROWTH DURING CONSTRUCTION PERIODS



## JOB GROWTH DURING OPERATIONS



\*All jobs in this report are full time equivalent (FTE) jobs for a year.  
In other words, 1 FTE = 2,080 hours worked in a year.