

*Your success starts here!*

# Online Training Courses

For Local Agencies and Tribal Communities



U.S. Department  
of Transportation

**Federal Highway  
Administration**

**Center for Local Support**  
OFFICE OF INNOVATIVE PROGRAM DELIVERY





# The Road to Success Starts Here!

The Federal Highway Administration's Center for Local Aid Support is sponsoring online training courses for the local agencies and tribal communities. This is your guide to anytime, anywhere access to hundreds of training topics designed to meet your individual needs. With dozens of hours of content currently available and continual updates to the course curriculum, participants can continue their education in transportation topics from beginner to advanced.

If you have not tried one of these self-paced courses yet, now is the time to experience enhanced learning available to you through FHWA. All you will need to get started is internet connection.

A big thank you to our partners AASHTO, National Highway Institute and the Institute for Transportation Engineers. Making the online training available is important to ensuring continuity in the delivery of safe and efficient transportation assets to local and tribal communities. 24/7 training that is self-paced eliminates the challenges many agencies face with budget constraints; workforce shortages; and changing transportation needs.

But, on-demand does not have to mean that you are on your own! The Local Technical Assistance Centers in each state and Puerto Rico continue to provide technical assistance and live training in addition to what is already available to you online.

We hope you find this guide useful and essential to keeping you knowledgeable and innovative in your solutions to improving transportation for your communities. Be sure to pay attention to required passcodes and use your government email for registration. If you do not have a government email, please contact [CLAS@dot.gov](mailto:CLAS@dot.gov) for further assistance.

- The Center for Local Aid Support



# The Guide



## **National Highway Institute**

Over 180 web-based courses available

<https://bit.ly/nhitrainings>

## **American Association of State Highway Organizations TC-3**

Over 190 web-based courses

<https://bit.ly/tc3trainings>

## **Institute of Transportation Engineers**

15 online modules for smaller jurisdictions

<http://bit.ly/itetraining>

## **Federal Aid Essentials**

Online library of 112 informational videos

<https://www.fhwa.dot.gov/federal-aidessentials/indexofvideos.cfm>

## **Innovation Exchange**

FHWA's bi-monthly webinars on innovative market-ready technology

[https://www.fhwa.dot.gov/clas/training\\_tools/webinars.aspx](https://www.fhwa.dot.gov/clas/training_tools/webinars.aspx)

## **Local Technical Assistance Programs**

Check with your local LTAP Center for available online training.

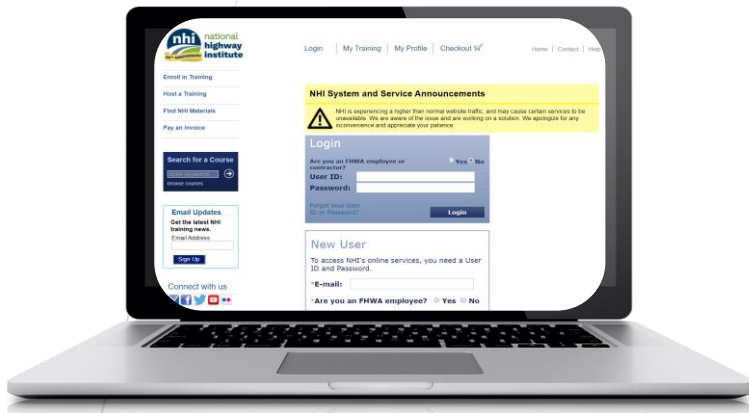
<https://www.fhwa.dot.gov/clas/ltap/>

## **Center for Local Aid Support**

Self-paced online training videos

[https://www.fhwa.dot.gov/clas/ttap/online\\_training.aspx](https://www.fhwa.dot.gov/clas/ttap/online_training.aspx)

# The National Highway Institute



- ❖ Sponsored training available to the local agencies and tribes.
- ❖ Create a profile using a government email account.

The National Highway Institute is the Training and Education arm of the Federal Highway Administration. On the NHI website, you have 24/7 access to more than 180 web-based courses. The training comes from national experts who are leaders in their field. NHI is recognized as an accredited training provider by the International Association of Continuing Education and Training (IACET), so participants can earn Continuing Education Units (CEUs) for NHI training courses.

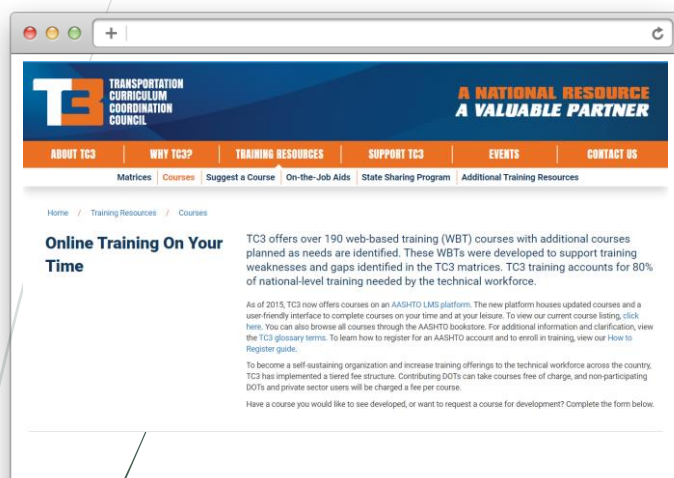
Some of the training available include courses on preserving transportation assets, contract administration, public private partnerships, construction and maintenance, design, financial management, environment, highway safety, freight, hydraulics and much, much more!

Start your online learning here: <https://bit.ly/nhitrainings>

Be sure to create your profile using a government-email account. If you do not have a government email address or you have internet issues, please contact [CLAS@dot.gov](mailto:CLAS@dot.gov).

Help us spread the word among local agencies and tribes to train with CLAS using #TrainwithClas in your Twitter tweets and Facebook or LinkedIn posts.

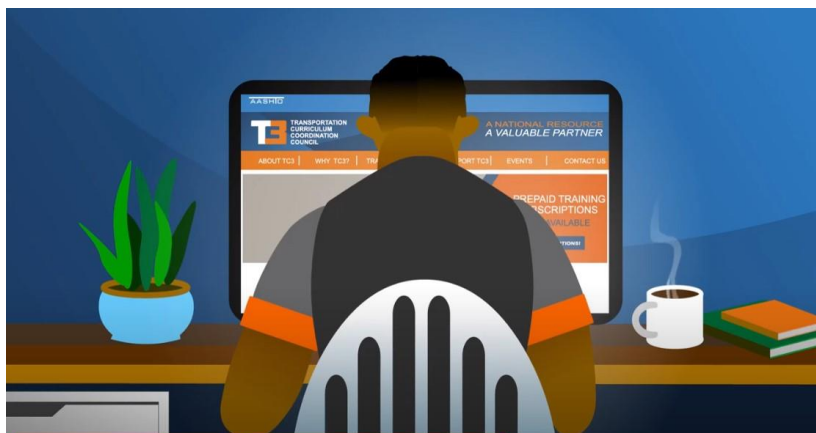
# American Association of State Highway Transportation Organizations (AASHTO)



- ❖ Sponsored training available to the local agencies and tribes.
- ❖ Be sure to use promotion code: D5X3-B3D9-52CB-4XCX

AASHTO covers over 190 online course through the TC3 training management system. TC3 offers the following training categories to get you started: Construction, Materials, Maintenance, Traffic and Safety, Pavement Preservation, and Employee Development. Be sure to use the promotion code and a government email address to access the sponsored training.

Some of the training includes 3D Engineered Models for Construction; Aggregate Sampling Basics; Concrete Placement; Soils Testing; Quality Assurance; Grade Control; Drainage Systems and much more! Be sure to visit YouTube to find out more! <https://bit.ly/tc3trainings>. If you have internet issues or do not have a government email address, please contact [CLAS@dot.gov](mailto:CLAS@dot.gov).



Click on image  
for video

# Institute of Transportation Engineers



- ❖ Sponsored training available to the local agencies and tribes.
- ❖ Use government email address to access the training.

The FHWA has partnered with the Institute of Transportation Engineers (ITE) to sponsor online courses for the smaller jurisdictions (counties with fewer than 100,000 population; cities, towns and townships with fewer than 50,000 population; all tribal governments) through the ITE Learning Hub.

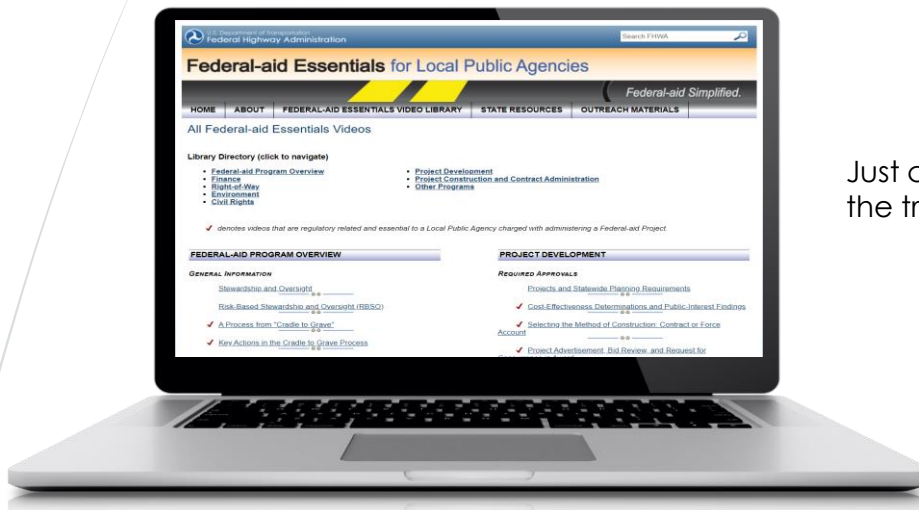
This training was developed specifically for new transportation professionals and for those who want to refresh their skills in the areas of highway maintenance, construction, safety and engineering.

Some of the training modules include Designing for Bicyclist Safety; Safety Data and Analysis Toolbox; Intro to Traffic Engineering Studies; Traffic Control at Intersections; and Protected Bikeway Designs.

Visit ITE Training site: <http://bit.ly/itetraining>. If you have internet issues or do not have a government email address, please contact [CLAS@dot.gov](mailto:CLAS@dot.gov).

Help us spread the word among local agencies and tribes to train with CLAS using #TrainwithClas in your Twitter tweets and Facebook or LinkedIn posts.

# Federal Aid Essentials



Just click a link to access the training.

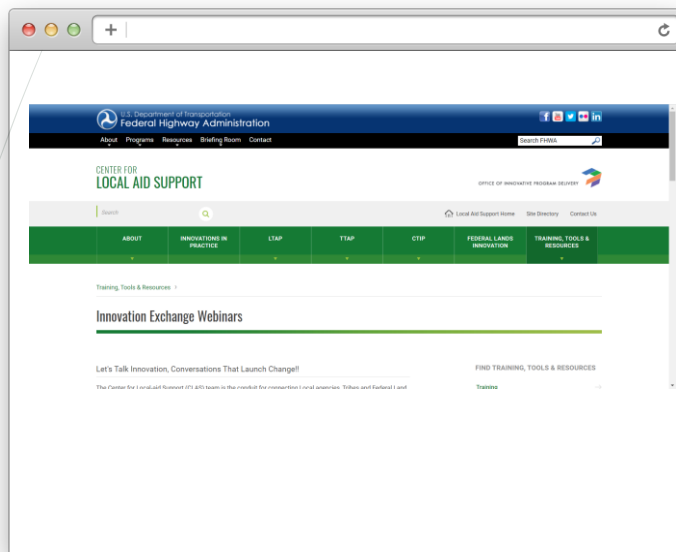
Federal Aid Essentials is an online library of 112 informational videos developed by the Federal Highway Administration for the local public agencies. Training topics include federal aid basics, project development, finance, environment and civil rights. This one-stop training tool provides immediate access to online learning that is self-paced. Through this training the Federal Highway Administration wanted to directly provide you with the information and tools needed to successfully deliver a federal aid program. Visit the website today! <https://www.fhwa.dot.gov/federal-aidessentials/indexofvideos.cfm>

Your success is our success!

Help us spread the word among local agencies and tribes to train with CLAS using #TrainwithClas in your Twitter tweets and Facebook or LinkedIn posts.



# Innovation Exchanges



Register for these at  
[CLAS@dot.gov](mailto:CLAS@dot.gov)

The Innovation Exchange is a series of webinars where transportation professionals can share information and exchange out of the box innovative practices. These webinars are held monthly with informative presentations and engaging dialog throughout.

CLAS developed the webinars to provide a way for transportation professionals to share creative practices for solving challenges and generate dialog that will keep moving the industry forward creating a safer and more efficient transportation system.

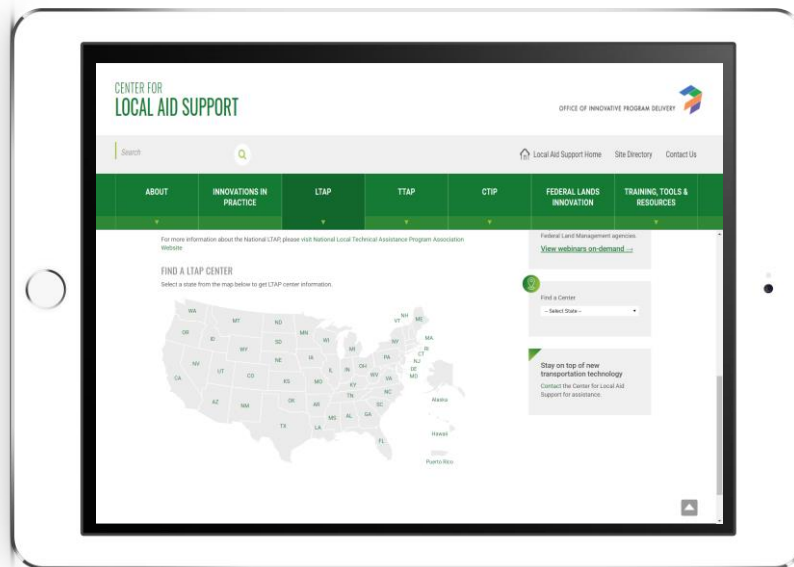
We encourage our partners to participate. Some of the webinars have covered topics on Asset Management, Pavement Preservation, Collaborative Hydraulics, Crowdsourcing for local operations and much much more! You can visit our website for more information at [https://www.fhwa.dot.gov/clas/training\\_tools/webinars.aspx](https://www.fhwa.dot.gov/clas/training_tools/webinars.aspx).

If you have internet issues or you do not have a government email address, please contact [CLAS@dot.gov](mailto:CLAS@dot.gov).

Help us spread the word among local agencies and tribes to train with CLAS using #TrainwithClas in your Twitter tweets and Facebook or LinkedIn posts.



# Local Technical Assistance Program



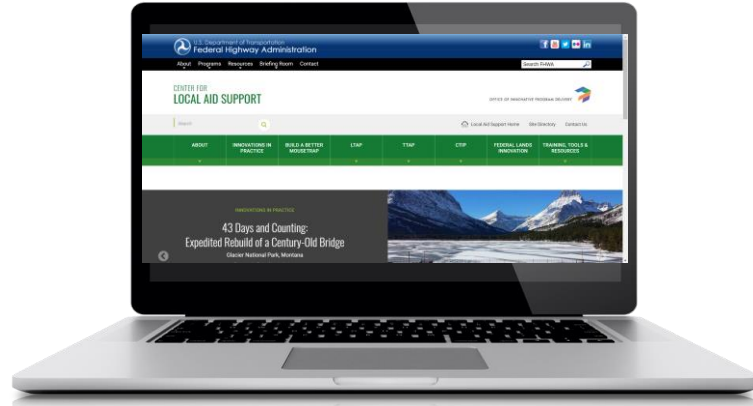
The Local Technical Assistance Program is one of the agency's largest transportation technology transfer activities and serves as a vehicle for FHWA to impact transportation systems by forwarding products, knowledge and resources applicable to local roadways directly to the front-line agencies that need them.

The small program has a large footprint across local system. Key to the delivery of the national program is the use of 51 local Centers – one in each state and Puerto Rico. The local centers are tasked under the program to provide training, technical assistance and technology transfer services related to highways to the local public agencies in their state or territory.

LTAP Centers across the nation provide face to face training and technical assistance in support of local transportation. We hope local agencies and tribes continue to expand their transportation knowledge with the help of LTAP centers' resources.

Be sure to check with your state LTAP for information on available online training. For more information on LTAPs, visit our webpage: <https://www.fhwa.dot.gov/clas/ltap/>.

# Center for Local Aid Support



The FHWA's Center for Local Aid Support has developed a series of self-paced online training courses for local agencies and tribal communities.

The addition of these courses is our commitment to empowering transportation professionals with the skills necessary to deploy new innovation that keeps transportation moving into the future. The courses are conducted 100% online and are on-demand, allowing users to learn at their own pace and on their own time.

The training courses focus on Every Day Counts initiatives such as:

- STEP (Safe Transportation for Every Pedestrian)
- Geosynthetic Reinforced Soil – Integrated Bridge System
- Gravel Roads
- Project Bundling
- Asset Management for unpaved roads
- Rockeries
- Value Capture

CLAS will continue to develop training that will keep transportation moving into the future. These courses can be accessed on the CLAS website: [https://www.fhwa.dot.gov/clas/ttap/online\\_training.aspx](https://www.fhwa.dot.gov/clas/ttap/online_training.aspx). If you have internet issues or no government email address, please contact us at [CLAS@dot.gov](mailto:CLAS@dot.gov).

Help us spread the word among local agencies and tribes to train with CLAS using #TrainwithClas in your Twitter tweets and Facebook or LinkedIn posts.

# LTAPs



State	Center Name	Address	Phone Number	Website
<b>Alabama</b>	<i>Alabama Transportation Assistance Program</i>	202 Ramsay Hall Auburn, AL 36849	800-446-0382	<a href="http://eng.auburn.edu/atap/">http://eng.auburn.edu/atap/</a>
<b>Alaska</b>	<i>Alaska Research, Development, &amp; Technology Transfer</i>	2301 Peger Road Fairbanks, AK 99709-5316	907-269-6208	<a href="http://www.dot.state.ak.us/stwddes/research/">http://www.dot.state.ak.us/stwddes/research/</a>
<b>Arizona</b>	<i>Arizona LTAP</i>	1130 North 22nd Avenue Phoenix, AZ 85009	602-712-4050	<a href="https://www.azltap.org/">https://www.azltap.org/</a>
<b>Arkansas</b>	<i>Arkansas Department of Transportation</i>	10324 Interstate 30 Little Rock, AR 72209	501-569-2380	<a href="http://www.cttp.org/ardot/t2">http://www.cttp.org/ardot/t2</a>
<b>California</b>	<i>California LTAP Center</i>	3000 State University Drive Sacramento, CA 95819-6103	916-278-4433	<a href="http://www.californialtap.org/">http://www.californialtap.org/</a>
<b>Colorado</b>	<i>Colorado LTAP</i>	15285 S. Golden Road Building 47 Golden, CO 80401	303-735-3530	<a href="https://www.coloradoltap.org/ltap/default.asp">https://www.coloradoltap.org/ltap/default.asp</a>
<b>Connecticut</b>	<i>Connecticut Training &amp; Technical Assistance Center</i>	270 Middle Turnpike Unit 5202 Storrs, CT 06269-5202	860-486-5400	<a href="https://t2center.uconn.edu/">https://t2center.uconn.edu/</a>
<b>Delaware</b>	<i>Delaware T2 / LTAP Center</i>	355A DuPont Hall University of Delaware Newark, DE 19716	302-831-6241	<a href="https://sites.udel.edu/dct/t2-center/">https://sites.udel.edu/dct/t2-center/</a>
<b>Florida</b>	<i>Florida LTAP Center for Urban Transportation Research</i>	4202 East Fowler Ave. CUT100 Tampa, FL 33620-5375	813-974-4450	<a href="https://www.FloridaLTAP.org">https://www.FloridaLTAP.org</a>
<b>Georgia</b>	<i>Georgia Department of Transportation LTAP Center</i>	3993 Aviation Circle Atlanta, GA 30336	404-507-3437	<a href="http://www.dot.ga.gov/PartnerSmart/Local/Pages/LTAP.aspx">http://www.dot.ga.gov/PartnerSmart/Local/Pages/LTAP.aspx</a>
<b>Hawaii</b>	<i>State of Hawaii Department of Transportation</i>	2530 Likelike Highway Honolulu, HI 96819	808-832-3405 Ext 105	<a href="http://hidot.hawaii.gov/highways/other/hawaii-local-technical-assistance-program/">http://hidot.hawaii.gov/highways/other/hawaii-local-technical-assistance-program/</a>
<b>Idaho</b>	<i>LHTAC T2 Center</i>	3330 W. Grace Street Boise, ID 83703	208-344-0565	<a href="https://lhtac.org/">https://lhtac.org/</a>
<b>Illinois</b>	<i>Illinois Technology Transfer Center</i>	2300 S. Dirksen Parkway Springfield, IL 62764	217-785-2350	<a href="http://idot.illinois.gov/transportation-system/local-transportation-partners/county-engineers-and-local-public-agencies/technology-transfer-center/index">http://idot.illinois.gov/transportation-system/local-transportation-partners/county-engineers-and-local-public-agencies/technology-transfer-center/index</a>
<b>Indiana</b>	<i>Indiana LTAP</i>	504 West State Street West Lafayette, IN 47907-2058	765-494-2900	<a href="https://docs.lib.purdue.edu/inltap/">https://docs.lib.purdue.edu/inltap/</a>

# LTAPs



<b>Iowa</b>	<i>Iowa LTAP</i>	2711 South Loop Drive Suite 4700 Ames, IA 50010-8664	515-294-8103	<a href="https://iowaltap.iastate.edu/">https://iowaltap.iastate.edu/</a>
<b>Kansas</b>	<i>Kansas University Transportation Center</i>	1536 W 15th Street Suite G 520 Lawrence, KS 66045	785-864-5658	<a href="http://kutc.ku.edu/ltap">http://kutc.ku.edu/ltap</a>
<b>Kentucky</b>	<i>Kentucky Transportation Center</i>	176 Raymond Building Lexington, KY 40506-0281	800-432-0719	<a href="https://www.kyt2.com/">https://www.kyt2.com/</a>
<b>Louisiana</b>	<i>Louisiana LTAP Technology Transfer Center</i>	4099 Gourrier Avenue Baton Rouge, LA 70808	225-767-9717	<a href="http://www.louisianaltap.org/">http://www.louisianaltap.org/</a>
<b>Maine</b>	<i>Maine Local Roads Center</i>	24 Child Street Augusta, ME 04330	800-498-9133	<a href="https://www.maine.gov/mdot/mlrc/">https://www.maine.gov/mdot/mlrc/</a>
<b>Maryland</b>	<i>Center for Advanced Transportation Technology and Maryland T2 Center</i>	5000 College Avenue 2200 Technology Ventures Bldg., College Park, MD 20740	301-403-4623	<a href="http://www.mdt2center.umd.edu/">http://www.mdt2center.umd.edu/</a>
<b>Massachusetts</b>	<i>Massachusetts LTAP - Baystate Roads</i>	214 Marston Hall Amherst, MA 01003	413-545-2604	<a href="https://www.umasstransportationcenter.org/umtc/Baystate_Roads.asp">https://www.umasstransportationcenter.org/umtc/Baystate_Roads.asp</a>
<b>Michigan</b>	<i>Michigan Local Technical Assistance Program</i>	309 Dillman Hall 1400 Townsend Drive Houghton, MI 49931	906-487-2102	<a href="http://www.michiganltap.org/">http://www.michiganltap.org/</a>
<b>Minnesota</b>	<i>Minnesota LTAP</i>	University Office Plaza, Suite 440 2221 University Avenue, SE Minneapolis, MN 55414	612-626-1077	<a href="http://www.mnltap.umn.edu/">http://www.mnltap.umn.edu/</a>
<b>Mississippi</b>	<i>Mississippi LTAP</i>	401 North West Street Jackson, MS 39201	601-359-7685	<a href="https://mdot.ms.gov/portal/LTAP/">https://mdot.ms.gov/portal/LTAP/</a>
<b>Missouri</b>	<i>Missouri LTAP</i>	710 University Drive Suite 121 Rolla, MO 65409-1340	573-341-7200	<a href="https://mltrc.mst.edu/moltaphome/">https://mltrc.mst.edu/moltaphome/</a>
<b>Montana</b>	<i>Montana Local Technical Assistance Program</i>	2327 University Way Room 230 Bozeman, MT 59715	406-994-6100	<a href="http://www.montana.edu/ltap/">http://www.montana.edu/ltap/</a>
<b>Nebraska</b>	<i>Nebraska Local Technical Assistance Program</i>	650 J Street, Suite 215 A Lincoln, NE 68508	402-472-5748	<a href="https://www.ltap.unl.edu/neltap/default.asp">https://www.ltap.unl.edu/neltap/default.asp</a>
<b>Nevada</b>	<i>Nevada LTAP Center</i>	1755 E. Plumb Lane Suite 264 Reno, NV 89502	775-420-4811	<a href="https://nvltap.com/">https://nvltap.com/</a>
<b>New Hampshire</b>	<i>UNH - Technology Transfer Center</i>	33 Academic Way Durham, NH 03824	603-862-0030	<a href="https://t2.unh.edu/contact-us">https://t2.unh.edu/contact-us</a>
<b>New Jersey</b>	<i>New Jersey Local Technical Assistance Program</i>	100 Brett Road Piscataway, NJ 08854-8058	848-445-0579	<a href="https://cait.rutgers.edu/njltap/">https://cait.rutgers.edu/njltap/</a>

# LTAPs



<b>New Mexico</b>	<i>New Mexico LTAP</i>	1 University of New Mexico Albuquerque, NM 87131	505-277-0767	<a href="http://ltap.unm.edu/">http://ltap.unm.edu/</a>
<b>New York</b>	<i>NYS LTAP Center Cornell Local Roads Program</i>	106 Riley Robb Hall Ithaca, NY 14853	607-255-8033	<a href="https://www.nysltap.cals.cornell.edu/">https://www.nysltap.cals.cornell.edu/</a>
<b>North Carolina</b>	<i>North Carolina LTAP</i>	909 Capability Drive Research Building IV Raleigh, NC 27606	919-515-8899	<a href="https://itre.ncsu.edu/focus/ltap/">https://itre.ncsu.edu/focus/ltap/</a>
<b>North Dakota</b>	<i>North Dakota LTAP</i>	515 ½ E. Broadway Suite 101 Bismarck, ND 58501	701-328-9855	<a href="https://www.ndltap.org/">https://www.ndltap.org/</a>
<b>Ohio</b>	<i>Ohio LTAP Center</i>	1980 West Broad Street Columbus, OH 43223	614-466-7170	<a href="http://www.dot.state.oh.us/Divisions/Planning/LocalPrograms/LTAP/Pages/default.aspx">http://www.dot.state.oh.us/Divisions/ Planning/LocalPrograms/LTAP/ Pages/default.aspx</a>
<b>Oklahoma</b>	<i>Oklahoma Local Technical Assistance Program</i>	5202 N Richmond Hill Drive Stillwater, OK 74075	405-744-7496	<a href="http://ltap.okstate.edu/">http://ltap.okstate.edu/</a>
<b>Oregon</b>	<i>Oregon Technology Transfer Center</i>	355 Capitol Street NE, MS 11 Salem, OR 97301-3871	888-275-6368	<a href="https://www.oregon.gov/odot/programs/t2/Pages/default.aspx">https://www.oregon.gov/odot/ programs/t2/Pages/default.aspx</a>
<b>Pennsylvania</b>	<i>PennDOT LTAP</i>	400 North Street 6th Floor Harrisburg, PA 17120	800-367-5827	<a href="https://gis.penndot.gov/ltap/">https://gis.penndot.gov/ltap/</a>
<b>Puerto Rico</b>	<i>Puerto Rico Transportation Technology Transfer Center</i>	P.O. Box 9000 Mayagüez, P.R. 00681-9000	787-834-6385	<a href="http://prltap.org/eng/">http://prltap.org/eng/</a>
<b>Rhode Island</b>	<i>Rhode Island Department of Transportation RILTAP</i>	2 Capitol Hill, #119 Providence, RI 02903	401-222-2450	<a href="http://www.dot.ri.gov/about/RILTAP.php">http://www.dot.ri.gov/about/ RILTAP.php</a>
<b>South Carolina</b>	<i>South Carolina Transportation Technology Transfer Service</i>	202 Hugo Drive Clemson, SC 29634	864-656-4183	<a href="https://www.scltap.org/">https://www.scltap.org/</a>
<b>South Dakota</b>	<i>South Dakota Local Transportation Assistance Program</i>	1175 Medary Avenue Brookings, SD 57006	605-688-4121	<a href="https://www.sdstate.edu/jerome-j-lohr-engineering/sd-local-transportation-assistance-program">https://www.sdstate.edu/jerome-j-lohr- engineering/sd-local-transportation- assistance-program</a>
<b>Tennessee</b>	<i>Tennessee Transportation Assistance Program</i>	309 Conference Center Building Knoxville, TN 37996-4133	865-974-5255	<a href="http://ttap.utk.edu/">http://ttap.utk.edu/</a>
<b>Texas</b>	<i>TxLTAP</i>	140 W. Mitchell Street Arlington, TX 76019	817-272-9617	<a href="http://www.txltap.org/">http://www.txltap.org/</a>
<b>Utah</b>	<i>Utah LTAP Center</i>	4111 Old Main Hill Logan, UT 84322-4111	435-797-2918	<a href="https://www.utahltap.org/">https://www.utahltap.org/</a>
<b>Vermont</b>	<i>Vermont Local Roads Program</i>	1716 US Route 302 Montpelier, VT 05633-5001	802-828-3537	<a href="https://localroads.vermont.gov/">https://localroads.vermont.gov/</a>
<b>Virginia</b>	<i>UVA Transportation Training Academy</i>	351 McCormick Road Thornton Hall, Room B122A Charlottesville, VA 22904-4742	434-982-2897	<a href="http://uva-tta.net/">http://uva-tta.net/</a>

## LTAPs



<b>Washington</b>	<i>Washington State LTAP Center</i>	310 Maple Park Avenue SE Olympia, WA 98504-7300	360-705-7355	<a href="https://www.wsdot.wa.gov/">https://www.wsdot.wa.gov/</a>
<b>West Virginia</b>	<i>West Virginia LTAP</i>	395 Evansdale Drive, Morgantown, WV 26505	304-293-9924	<a href="https://www.wvltap.org/">https://www.wvltap.org/</a>
<b>Wisconsin</b>	<i>Wisconsin Transportation Information Center</i>	432 North Lake Street Madison, WI 53706	800-442-4615	<a href="https://epd.wisc.edu/tic/">https://epd.wisc.edu/tic/</a>
<b>Wyoming</b>	<i>Wyoming Technology Transfer Center (WyT2/LTAP)</i>	1000 E. University Avenue Dept. 3295 Laramie, WY 82071	307-766-6743	<a href="http://www.uwyo.edu/wyt2/">http://www.uwyo.edu/wyt2/</a>



#TrainwithCLAS

# Opportunity Highway



U.S. Department of Transportation  
**Federal Highway Administration**

Courtesy: Getty Images

## Knowledge This Way.

Any questions or feedback? Please email us at  
[CLAS@dot.gov](mailto:CLAS@dot.gov)