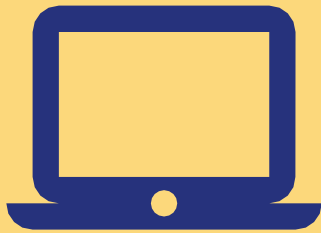




ELEMENTARY FIRST DAY REFERENCE GUIDE



Friday, August 21

Log into Skyward Family Access: <https://ccisd.net/familyaccess>

Username & Password: Parents Established

Click on "Schedule" to find your teacher



Monday, August 24 @ 8:15 AM (for practice Sunday, August 23)

Log into the Single Sign on Portal: <https://sso.portal.ccisd.net>

Username: Student ID (ID numbers begin with 100)

Password: Student lunch PIN with two preceding zeroes in front for the password (for example: 00xxxxxx).

Click on itsLearning for grades 3-5 or SeeSaw for Pk-2.

On home page of itslearning you will see daily schedule which will tell you what time your class will be meeting synchronously (real-time) and what time your student will be working independently.

For face-to-face time with teachers and students, click on Microsoft Teams Link which is accessible in the itslearning home page for the class.



ELEMENTARY FIRST DAY REFERENCE GUIDE



Simple Definitions

Skyward Family Access is to locate student schedules, grades and parent messages.

Single Sign on Portal is for all students to have immediate access to software without having to log in with multiple passwords. This is where students should begin each school day.

Itslearning is the virtual classroom for students. Here students will see their daily schedule, lessons, links to live video conferencing, and collaboration tools. This is where students will spend most of their school day.

SeeSaw is designed for the youngest learners where they can upload videos of them reading or assignments as well as visit with their teacher.

Microsoft Teams is for real-time, face-to-face instruction with teachers and fellow classmates. Each course will have a Teams link and specified meeting time.



Help & Resources

Need Help Finding Student Username and Password?

Go to Skyward Family Access and click on Report Card Tab then click on the link "Student Skyward Login Information." Student username and password will be viewable.

Technology Support for Students: 281-284-0500

Hours: Saturday, Aug. 22 & Sunday, Aug. 23: 9 AM-3 PM
Monday-Friday: 8 AM-3 PM

Additional Online Resources:

https://ccisd.net/departments/technology_support

Important Dates: Aug. 24-School Begins for all Online
August 31-Brick & Mortar for Pk, K, 6, 9 grades
and certain special education groups
September 14-Brick & Mortar for all grades



VIRTUAL SCHOOL TECHNOLOGY TIPS

Here is a checklist for you to review before the first day of online learning.
If you are using a laptop or tablet, make sure it is charged
and ready to begin online learning August 24th.

ESTABLISH YOUR LEARNING ENVIRONMENT:

- ✓ In a well-lit area with little noise and minimal distractions
- ✓ Near an outlet to keep your laptop or tablet charged throughout the day
- ✓ With everything you will need for a successful online learning experience
(paper, pencil, headphones, and other school supplies)

CHECK YOUR ONLINE LEARNING EQUIPMENT:

- ✓ Camera check! Does your computer have a camera or a free-standing working webcam?
- ✓ Sound check! Do you know how to turn the volume up and down on your computer?
- ✓ Do you know where to plug in headphones if you plan on using them?
- ✓ Equipment check! If you are using a wireless mouse, check the batteries or be sure it is charged.

DOES YOUR CHILD KNOW THEIR LOGIN INFORMATION?:

- ✓ If yes, have your child PRACTICE logging in before online learning begins.
- ✓ If no, follow the directions below to find your child's log in information,
so they are ready to begin online learning.

HOW TO LOGIN TO SKYWARD ON A DESKTOP:

1. Go to ccisd.net, then click **@Home** in the quick links under the main banner
2. Click on **Skyward Family Access**
3. Enter your parent login information
4. In the top left corner, use the drop-down menu under **Family Access** to choose which child needs their log in information
5. On the left-hand side in the blue area, click the **Report Card** tab
6. Under **Description** click on **Student Skyward Login Information**
7. After it generates the report, click **View Report** and you will find your students user ID and password. When using their user ID, you do not need to use the whole email address, just the numbers.