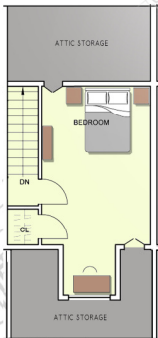


PRESENTING Brunswick Commons — 109th Ave. Portland, OR

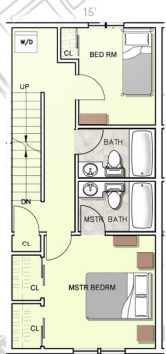


BRUNSWICK COMMONS
@ NE 109th Avenue
Model B

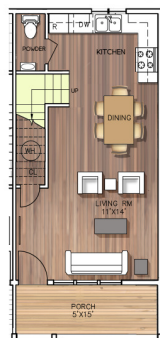
3 bedroom 2.5 bath
1,200 sq ft



ATTIC
293 SQ FT



SECOND LEVEL
495 SQ FT



MAIN LEVEL
412 SQ FT



BRUNSWICK COMMONS
@ NE 109th Avenue
Model B1

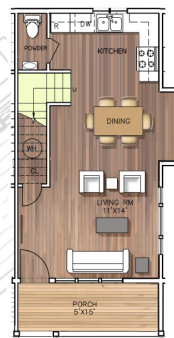
3 bedroom 2.5 bath
1,243 sq ft



ATTIC
307 SQ FT



SECOND LEVEL
510 SQ FT



MAIN LEVEL
426 SQ FT



Natl Urban Housing & Economic
Community Development Corp

MORGAN
DAVIS HOMES
kw PORTLAND
CENTRAL
KELLER WILLIAMS, REALTY



Natl Urban Housing & Economic
Community Development Corp

MORGAN
DAVIS HOMES
kw PORTLAND
CENTRAL
KELLER WILLIAMS, REALTY

THREE LEVEL TOWNHOMES

Custom designed new townhomes. Open main with living, dining, kitchen (stainless steel range, dishwasher, refrigerator and granite counters) and half bath. Master and second bedroom, two baths and laundry (washer/dryer included) on the second floor. Third bedroom on the third floor. Ample storage.

Expected completion Fall of 2018. Call for more information.

MORGAN
DAVIS HOMES

C. Morgan Davis

Principal Broker

Office: **503.748.8200**

MorganDavisHomes.com

Keller Williams Realty Portland Central

\$299,900

3 Bedrooms

2 1/2 Baths

Between 1200—
1243 total sq. ft.

HOA: \$189 per
month.

Includes: water,
sewer, garbage, com-
mons and exterior
maintenance

David Douglas
School District