

PART 2

Call for Volunteers to Planting Trees and Shrubs along Genesee River Town of Hume, Allegany County

WHEN: SATURDAY, JUNE 15, 2019, 8:30 AM – 4:30 PM

WHERE: Town of Hume, Allegany Co.; Near intersection of West River Road and NY State Route 19A, approx. 1 ¼ miles north on State Route 19A from the intersection of State Routes 19 and 19A and County Rd. 4 in the Village of Fillmore. See Location maps and Parking Location photos on Pages 2 -4 of this notice.

When we did Part 1 on June 1 some folks got lost. If you are not familiar with the northern Allegany County, we recommend that before you leave, either google **11023 West River Road, Fillmore NY** and use it to get driving instructions, or use the address in your GPS. The address is located near the correct intersection of West River Rd. and State Route 19A. The problem encountered was that there are at least three locations where West River Road intersects with SR 19A. If you are coming north through Fillmore, the first West River Road / SR 19A intersection is the correct one. If you are driving south on SR 19A from Portageville, you will pass 2 other West River Road intersections before you get to the correct one. Look for the intersection where Wayne Road crosses on SR 19A (there should be a sign for Wagoner Bees near this intersection). Continue going south on SR 19A, the next intersection on the left is the correct West River Road intersection. You will see the NYSEG Pole Yard maintenance area at this intersection.

The NYSEG Pole Yard is where you will park. There is no parking along West River Road.

WHAT: In 2018, Edelweiss Farms and the Genesee RiverWatch undertook a project to stabilize a rapidly eroding vertical riverbank along the Genesee River. Currently, 1900 linear feet of the riverbank has been graded to a more gradual slope and rock has been placed to protect the lower portion of the riverbank. On June 1 we planted 900 plants, but we still need to complete the project by planting the remaining 600 plants.

WHO TO CONTACT: Pete Lent: lent@frontiernet.net. We will need to know: (1) your e-mail and phone number; (2) whether you will be able to help, most of day, or only in morning, or only in afternoon; (3) how many folks might be coming with you; and (4) if you have any questions.

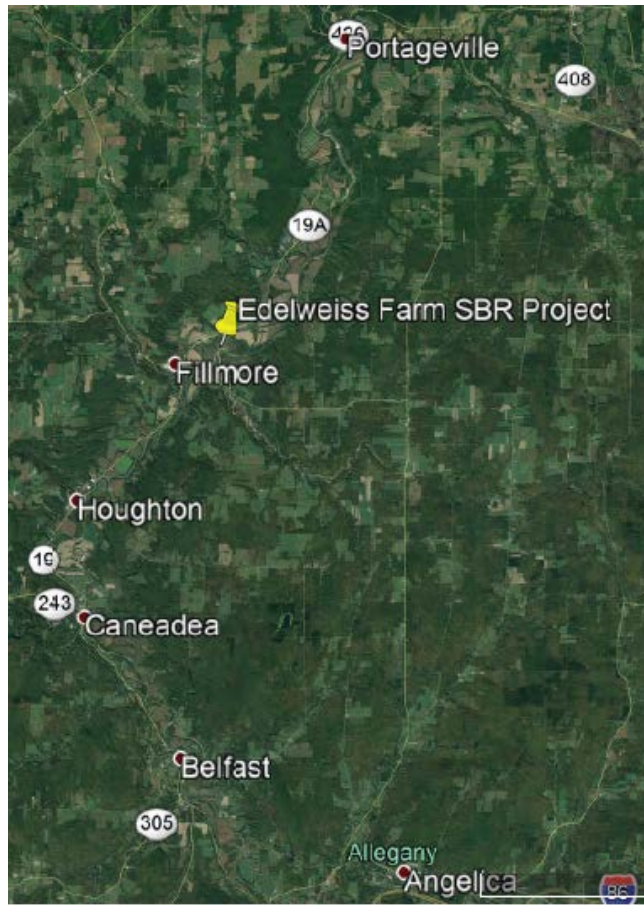
ADDITIONAL DETAILS: Volunteers will need no prior experience. We will provide instruction on planting techniques, and placement of protective tree tubes and the stakes to secure them. Volunteers should bring pointed shovels, work gloves, and garden trowels. Please label your tools for easy identification. Conditions may be muddy so volunteers should wear boots. Bring water and a lunch. Also bring insect repellent (for black flies) and sunscreen. Toilet facilities will be provided. We look forward to your assistance with this worthy project. With your help we will be able to accomplish this task, while enjoying the nearby views of the Genesee River.

OVER



Project Location Maps





Parking Location: RG&E Pole Yard at Intersection of West River Road and Route 19A



Aerial Image: Showing RG&E Pole Yard (Red Circle) at intersection of NY Rt. 19A & West River Road, and its relationship to Farm Lane access to Planting Area (Green Circle)

