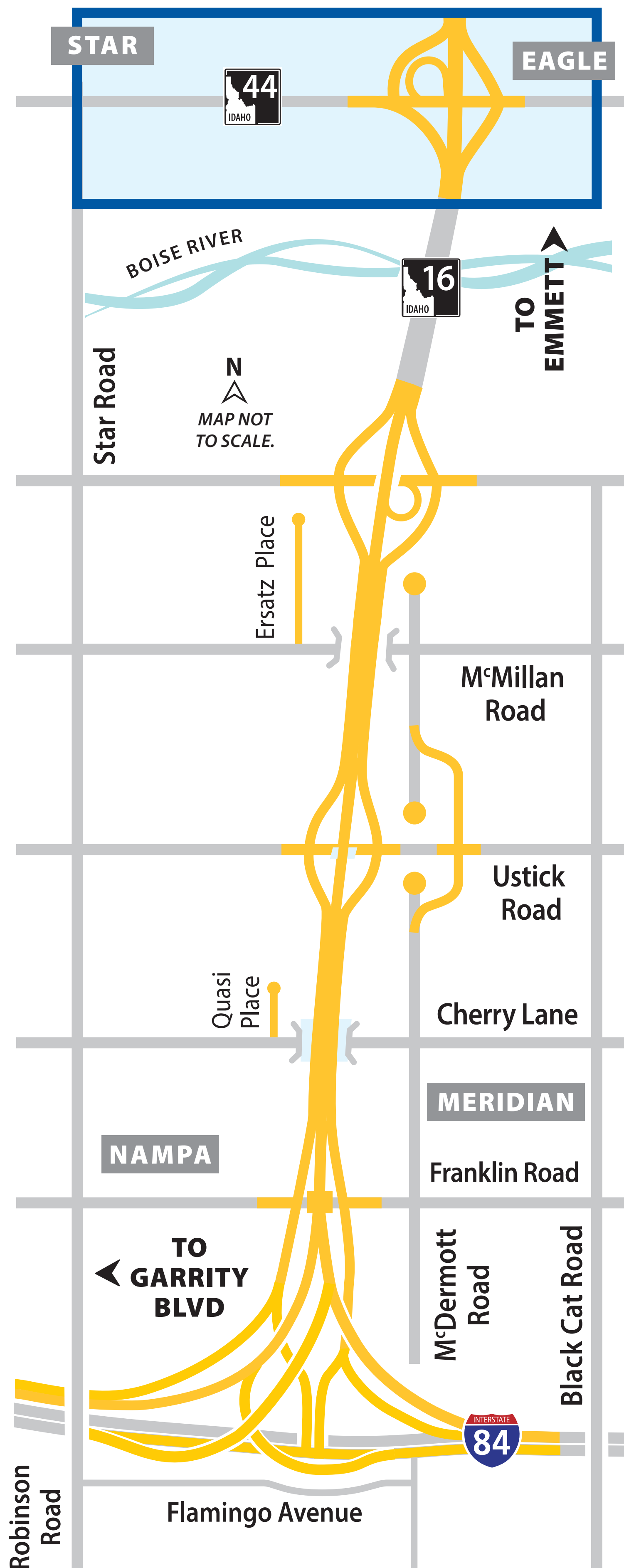


State Highway 16

Construction Update

SH-16/ SH-44 Interchange



CURRENT WORK:

- Crews are constructing the new northbound on-ramp, southbound off-ramp, and southbound loop on-ramp along SH-16.
- Crews are continuing to widen SH-44 on the north side.
- Continuing utility work around the interchange.

WHAT'S NEXT?

- Crews will work on the southbound lanes of SH-16, north of SH-44.
- Reconstructing the inside lanes and shoulder of SH-16, south of SH-44.
- Work will take place in the center of SH-44 to construct the inside lanes and median.



State Highway 16

Construction Update

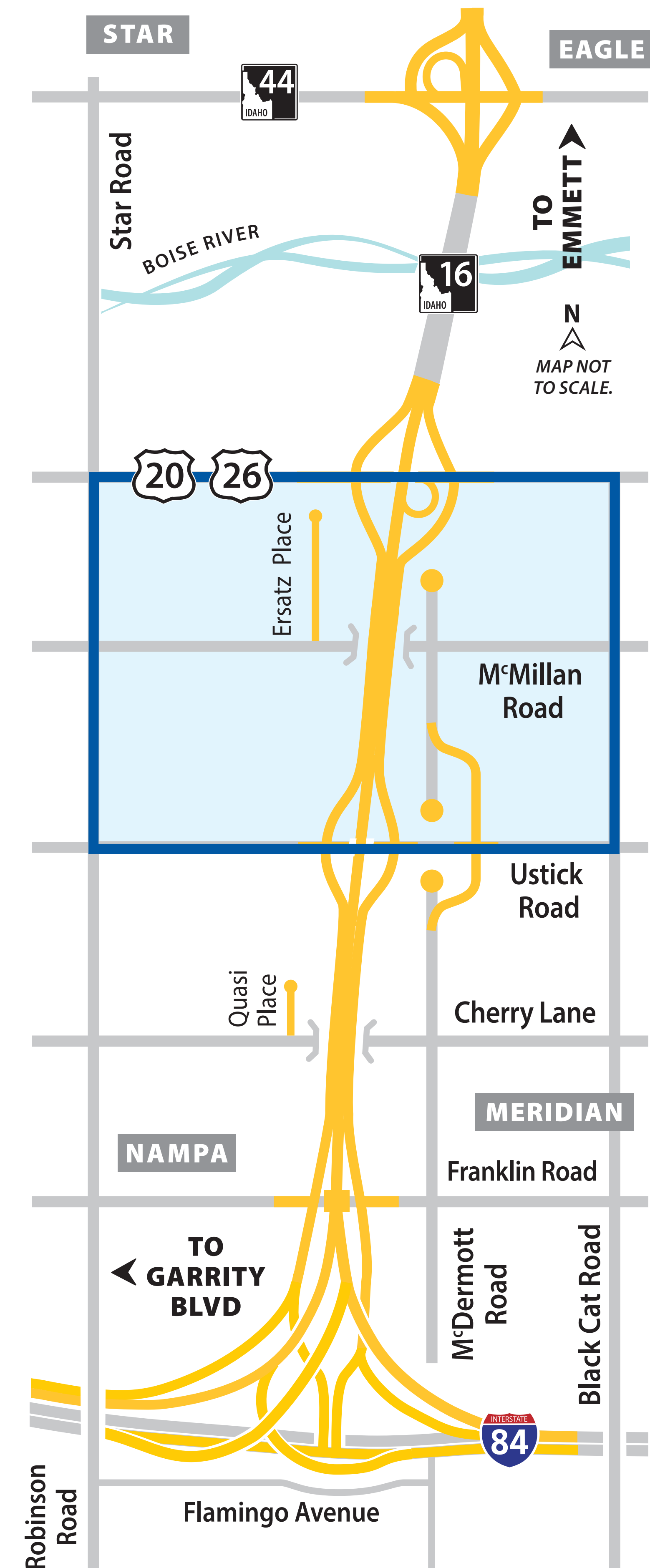
Ustick Road to US-20/26

CURRENT WORK:

- Crews are installing fencing along the SH-16 corridor at McMillan and McDermott roads.
- Work is continuing on the northbound loop on-ramp at the US-20/26 Interchange.
- Crews are prepping SH-16 for future paving.

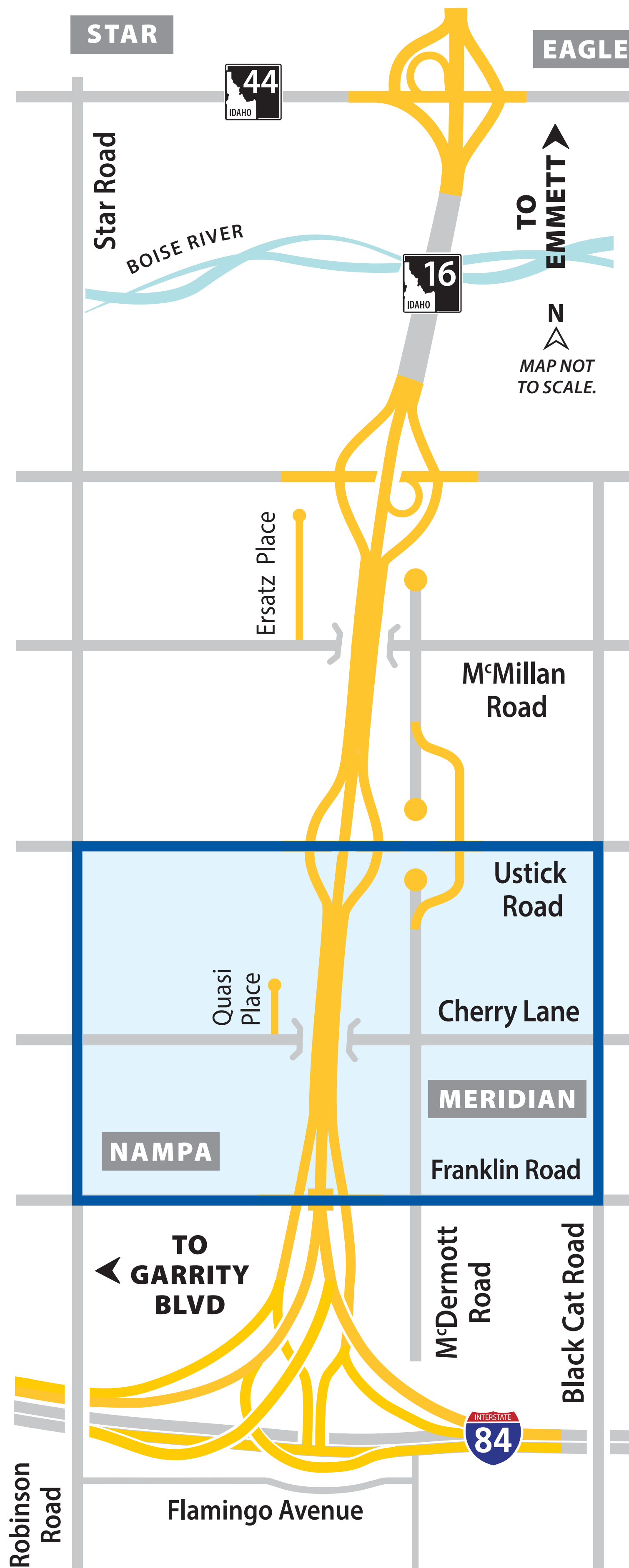
WHAT'S NEXT?

- Concrete paving operations will take place this spring at the US-20/26 Interchange.
- Work will continue on the US-20/26 Interchange bridge.



State Highway 16

Construction Update Franklin Road to Ustick Road



FEB. 2026



*The future SH-16/
Ustick Road Interchange.*



*The future SH-16/
Ustick Road Interchange.*

CURRENT WORK:

- Crews set girders at the future Ustick Road Interchange earlier this month.
- Crews are installing fencing along the SH-16 corridor between the Union Pacific Railroad and Ustick Road.

WHAT'S NEXT?

- Crews will work on the top deck of the interchange bridge at Ustick Road.
- Work on the future interchange will require occasional lane closures on Ustick Road.



State Highway 16

Construction Update

I-84 to Franklin Road



CURRENT WORK:

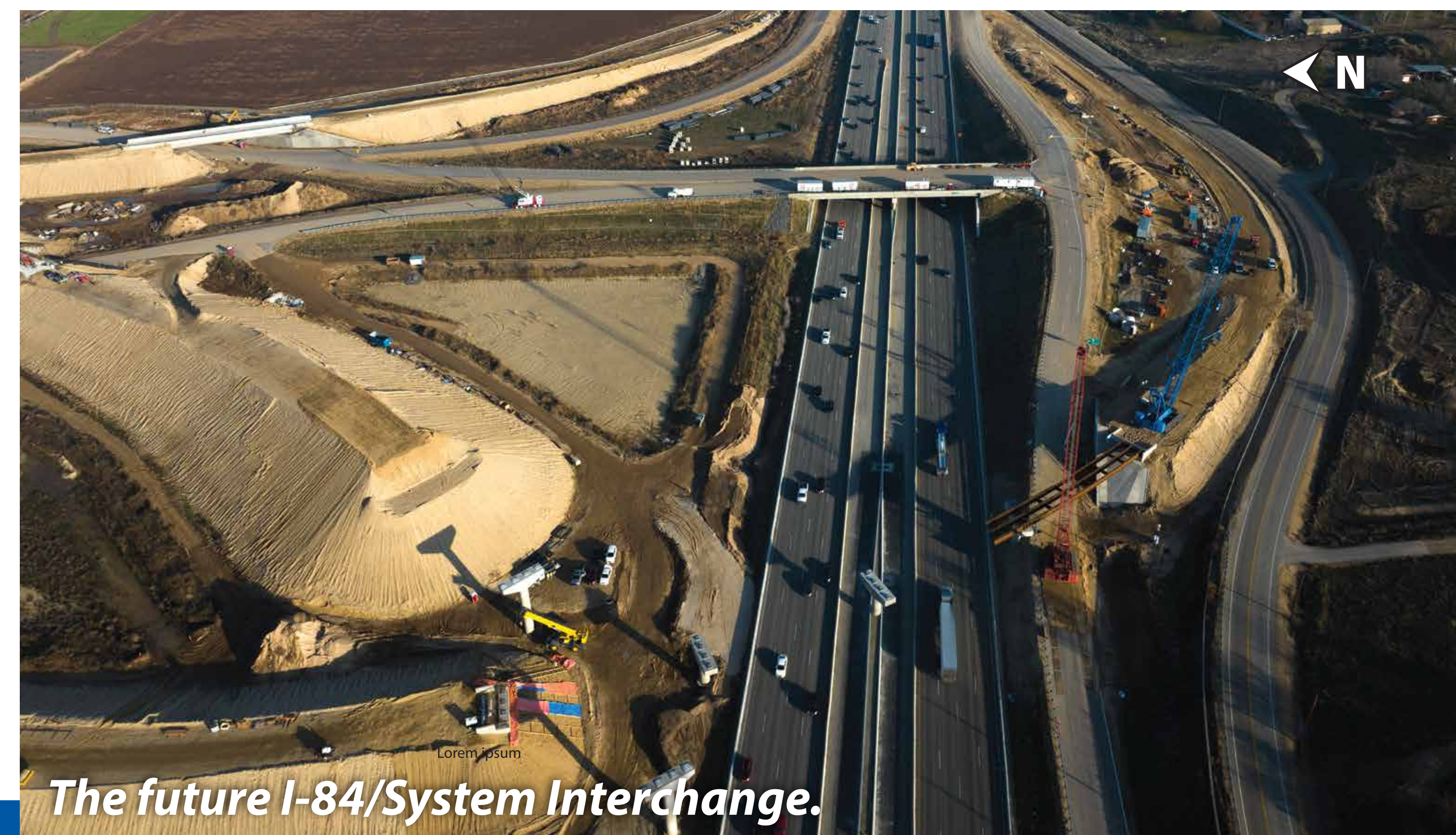
- Crews set girders for the first flyover ramp crossing I-84 last month.
- Work is continuing on the top deck of the Franklin Road interchange bridge.
- Crews will work on the top deck of the first flyover ramp this winter.

WHAT'S NEXT?

- Crews will set girders at the final flyover ramp crossing I-84 in the next month.
- Work at the I-84 System Interchange will require occasional lane restrictions and closures on I-84 for several months. Please be prepared.



Girders being placed for future SH-16 flyover ramp over I-84.



The future I-84/System Interchange.

