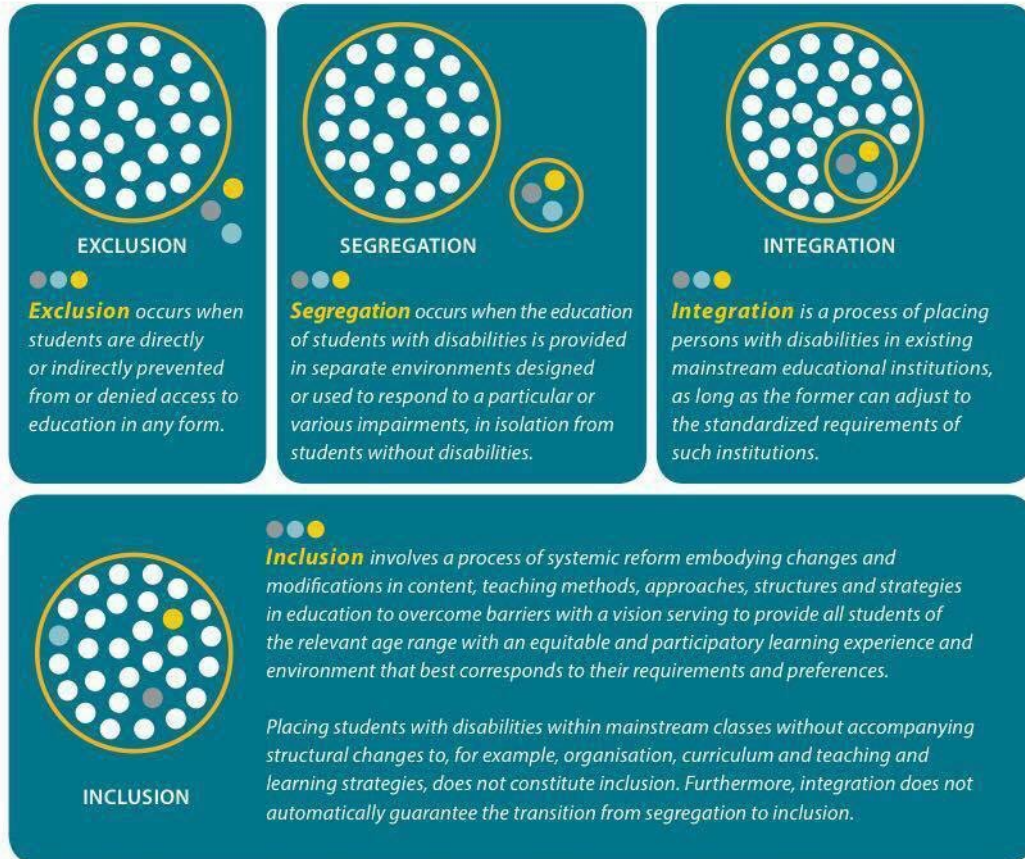


## What is inclusion?

Educational environments for students with disabilities range from a complete denial of formal educational services to equal participation in all aspects of the education system. For this paper, we describe the educational experiences of students with disabilities using the following four categories:



Source: United Nations Committee on the Rights of Persons with Disabilities General Comment No. 4 (<http://www.ohchr.org/Documents/HRBodies/CRPD/GC/RighttoEducation/CRPD-C-GC-4.doc>)

## LWPTSA Special Needs Group presents: Meaningful Inclusion - Dr. Ilene Schwartz



7:00-8:30pm Guest Speaker - Dr. Ilene Schwartz, director of Haring Center for Inclusive Education, UW. Dr. Schwartz will be discussing meaningful inclusion, its value, and implementation. Dr. Schwartz is a national authority on autism, early childhood education, developmental disabilities, and behavior.

6:30-7:00pm - Parent networking & opportunity to meet Paul Vine, Director of Special Services, and the Associate Directors.

Lake Washington School District Resource Center  
16250 NE 74<sup>th</sup> Street, Redmond

For on-site student care contact [smcenroe@lwsd.org](mailto:smcenroe@lwsd.org)

<http://www.lwptsa.net/special-needs/>