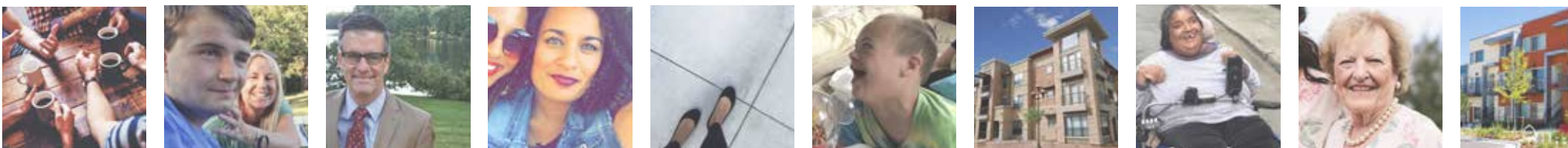




Aligning for Inclusive Housing



What we know.



**Increasing need for
community-based
housing for people
with I/DD.**



THE KELSEY

more housing | more inclusion | more community

www.thekelsey.org



PAST

FUTURE


**Changing regulations
and desired living
arrangements,
including for people
with disabilities.**



THE KELSEY

more housing | more inclusion | more community

www.thekelsey.org



**Greater need for
affordable and
supported housing,
across populations.
Full stop.**



THE KELSEY

more housing | more inclusion | more community

www.thekelsey.org

What we can do.



Many strong community partners who are addressing complementary housing needs and working on new housing trends.

Retaining
affordable
housing

Shared and
co-housing.

Smart
homes.

Corporate
housing.

Student
housing.

Artist
housing.

Increase collaboration and alignment across the sector of housers, funders, policymakers, service providers, and others.

**People with
Disabilities**

Parents

Siblings

**Self -
Advocates**

**“High
Functioning”**

**Challenging
Behaviors**

**Physical
Disabilities**

**High
Income**

Low Income

Housers

**Existing Disability
Housers**

Affordable Housing

**Market Rate
Developers**

Government

**City/County
Housing Officials**

**State Disability
Organizations**

**National Advocacy
Orgs**

CMS



THE KELSEY

more housing | more inclusion | more community

www.thekelsey.org



Change our language.



THE KELSEY

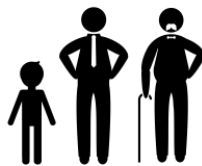
more housing | more inclusion | more community

www.thekelsey.org

Share a vision for the future.



Shift the challenge of disability housing into the opportunity for inclusive development.



Diverse housing options across income, age, preference, and background.



I/DD inclusive housing is always part of the larger housing pipeline, across affordable and market rate housing.



Permanent funding source to subsidize housing, particularly for people with I/DD at the lowest incomes.



THE KELSEY

more housing | more inclusion | more community

www.thekelsey.org

Workshop *Aligning for Inclusive Housing*

**What needs to happen and
who needs to do it?**