

To purchase
tickets, visit
cjn.org/wil

WOMEN IN LEADERSHIP

Traits of True Leaders 2017

Thursday, April 6
6 P.M. at ETON Chagrin Boulevard

Moderator:



Debbie Hoffmann
President, NCJW, Inc.

Join us for wine, appetizers,
networking and an inspiring
panel discussion.

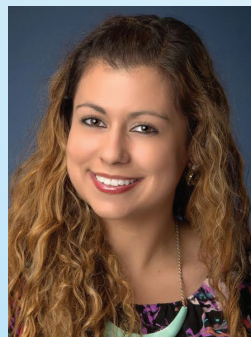
Panelists:



Jill Friedman Helfman
Practice Group Chair/
Partner
Taft Law



Lisa H. Michel, CTFA
Wealth Advisor
Vice President
Glenmede



Becky N. Orenstein
Admissions Manager
Case Western Reserve
University Weatherhead
School of Management



Tracy Turoff
Vice President
and Chief Legal Counsel
Hillel International

CO-PRESENTING SPONSORS:

GLENMEDE

Founded on ideals. Built on ideas.



Mercedes-Benz
of Bedford



WEATHERHEAD
SCHOOL OF MANAGEMENT
CASE WESTERN RESERVE
UNIVERSITY

VENUE
SPONSOR:



CATERING
SPONSOR:



For sponsorship opportunities contact: Adam Mandell

216.342.5191 | amandell@cjn.org