

## *What is Storage Connect Center?*



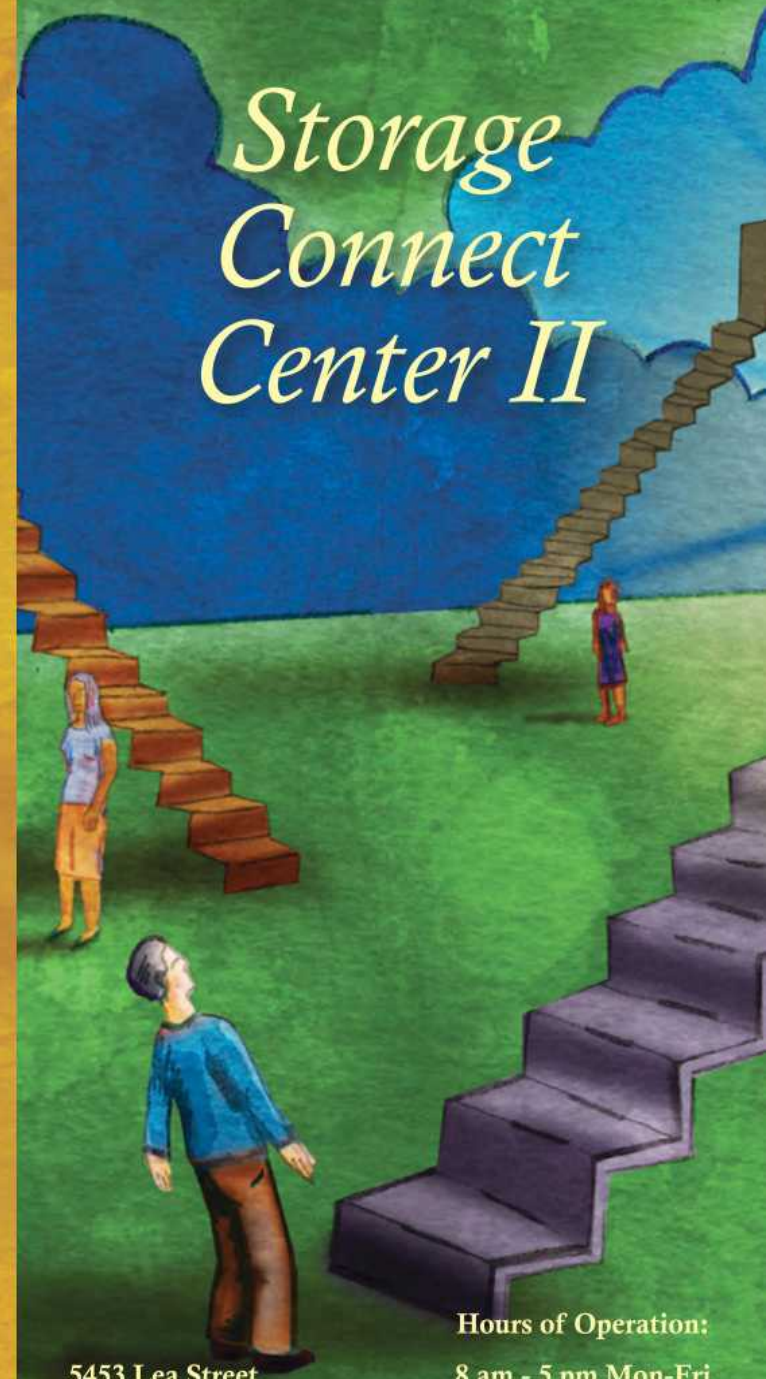
Storage Connect Center (SCC) is a facility that houses 500 storage containers. Each participant of the Facility will have access to one lockable storage container free of charge. Participants must be homeless and 18 years old and older in the City of San Diego. The Homeless Outreach Workers engage with participants while they access their storage and link them to housing, employment, and other services.

*Mental Health Systems  
is a non-profit agency founded  
in 1978 to improve the lives  
of individuals, families and  
communities facing substance  
abuse and behavioral health  
challenges.*

**mhs** MENTAL  
HEALTH  
SYSTEMS  
**mhsinc.org**

**mhs** MENTAL  
HEALTH  
SYSTEMS

## *Storage Connect Center II*



5453 Lea Street  
San Diego, CA 92105

Hours of Operation:  
8 am - 5 pm Mon-Fri  
8 am - 11 am Sat-Sun



## How Can Our Program Help?

The Storage Connect Center (SCC) provides a secure, protected, and safe space for participants in the City of San Diego to store their belongings, thereby freeing them to meet with a service provider, job seek, look for affordable housing, or attend classes.

The Homeless Outreach Workers can link participants to housing and other services.



## Who Do We Serve?

Homeless individuals who are 18 years and older and reside in the City of San Diego. Participants must be homeless as defined by the U.S. Department of Housing and Urban Development (HUD) & be willing to self-certify as homeless as part of the enrollment process.



## What Are Our Services?

Storage Connect Center (SCC) is a facility that houses 500 storage containers, and includes the following services:

- Each participant of the Facility will have access to one lockable storage container free of charge.
- Facility staff will provide participants with access to their belongings in the waiting area under supervision.
- Facility is responsible for the safety and security of the storage containers.
- Facility maintains an inventory system to log items stored by participants.
- Facility requires participants to sign an agreement acknowledging the Terms of Service to the program.
- Homeless Outreach Workers engage and link participants to housing, employment, and other services.

## Joining Our Program

The following providers can refer participants: City Environmental Services, San Diego Police Department, All Other City Departments, Think Dignity, and All Other Service Providers. We also accept self-referrals by participants who wish to benefit from our services. Walk-in clients are welcomed.

*"This program has helped me so much, I was out on the streets with all my stuff and it was so hard to keep them safe along with my kid stuff. Now that I have housing, I can have my stuff back untouched. Thank you for helping me keep my belongings safe while on the streets."*

- MHS SCC Program Alumni

## SCC Hours

Monday – Friday	8:00 a.m. – 5:00 p.m.
Saturday & Sunday	8:00 a.m. – 11:00 a.m.

