

WHAT YOU NEED TO KNOW BEFORE CLASS

Our team has thoroughly analyzed and implemented the best and safest safety measures to ensure the health of all attendees, instructors, and staff members. Our goal is to maintain a valued level of engagement while following CDC recommendations.



SAFESITTER

WOMAN'S
foundation inc.

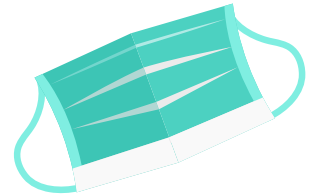
BEFORE CLASS

- Please do not attend class if you have been in contact with someone, in the last 14 days, who has tested positive for COVID-19.
- Parents/students are required to call our office in order to enter the building. Congregating in the hallway outside the classroom is prohibited.
- Temperature screenings are taken before entry. Any temperature 99° F+ will not be allowed entry.
- Students must have their registration form filled out along with a printed copy of birth certificate prior to entering class.
- Parents are not allowed in the classroom to complete forms.
- Everyone is required to sanitize hands upon entering the classroom.
- Students who have traveled out of state, 14 days prior to class dates will not be allowed.



SANITATION

- Students are required to bring their own mask. It must be worn during registration, going to the restroom, any time they are not seated at a designated safe distance from others, and when leaving for the day.
- Students are allowed to step outside the classroom to remove mask for a brief moment.
- Instructors are required to wear face shields and masks when social distancing is not obtainable. (i.e. During small group demonstrations)
- Hand sanitizer is available throughout the classroom for student use. Students are encouraged to sanitize hands during class breaks.



CLASS EXPECTATIONS

- Seats are spaced out 6 feet apart with indicator markers for walk flow.
- Students will not be practicing CPR breaths but will practice CPR chest compressions. Instructors will clean manikins after each student.
- Students must bring their own lunch, snacks, and drinks. Peanut products are prohibited.
- Students must use restroom located in the hallway and are encouraged to follow CDC guidelines for hand washing.
- If students begin to experience COVID-19 symptoms, they should notify the instructor immediately and report to the designated "self-quarantine" location. Parent/guardian will be contacted immediately.