



P5iCW

In-Wall / In-Ceiling Speaker

Technical Information

High-performance flexible architectural speaker designed for use in Top/Height, Wide, Main and Surround channels

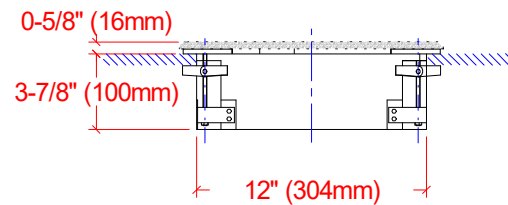
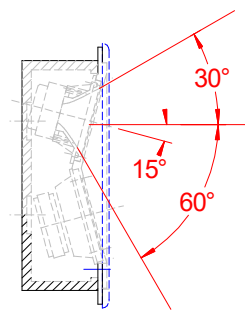
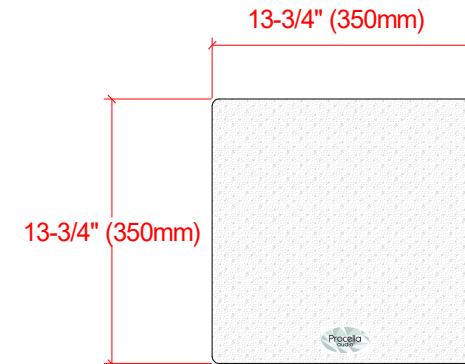
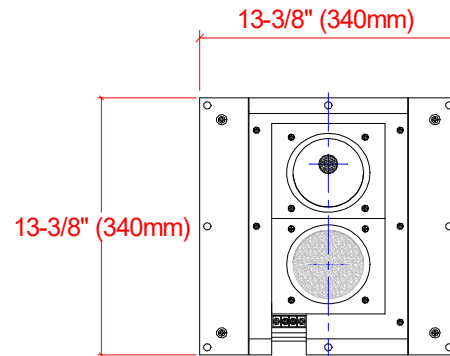
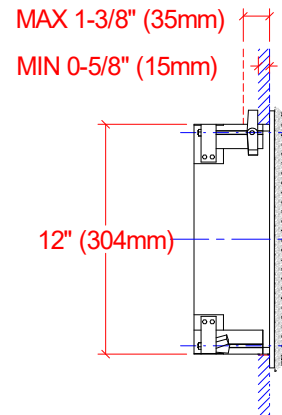
Optimized for ceiling mounted Atmos and overhead immersive audio height channels



- Tweeter and waveguide are mounted at a 15° angle to enable direction of high frequencies to listening positions
- Square enclosure and grille ensure visual symmetry for all speakers in the room
- Performance and sound quality identical to Procella's award-winning P5 & P5V
- Identical Voice™ timbre-matched to Procella P860, P815, P610, P28, and P8, P6 and P5 families
- All MDF sealed-box design with integral back box
- Removable front baffle houses the drivers crossover, and input terminals
- Wing clamp mounting is easy, quick and enables speaker removal
- 5.25" high-efficiency woofer driver
- 1" pro compression driver on 80° circular constant directivity waveguide
- Flat fabric grill attaches magnetically to complete elegant appearance
- Both white fabric and black fabric grilles are included

Impedance	8 Ohms nominal. Phase angles less than 45 degrees.	Components	
Power handling		Midrange	5.25" driver with 26mm voice coil in 5 litre sealed box
Continuous	75 Watt	High Frequency	1" Neodymium compression driver, circular constant directivity waveguide incorporating 15° tilt
Peak	250 Watt		
Sensitivity		Dimensions	
1m/1w	91dB	Speaker WxH	13.375 x 13.375" / 340 x 340mm
Maximum SPL	113dB continuous, 119dB peak	Depth	overall 4.5" / 116mm inside wall 3.875" / 100mm (fits U.S. walls)
Frequency response		Wall cut-out	12 x 12" / 305 x 305mm
-3dB points	90 Hz and 20 kHz	Grille WxH	13.75 x 13.75" / 350 x 350mm
Dispersion pattern		Shipping Carton	
-6dB	Constant directivity; 80° symmetrical from 2.5kHz with 15° tilt	HxWxD	15.75 x 15.75 x 11.81" / 400 x 400 x 300mm
Crossover	Asymmetrical and phase-aligned 2.2kHz, BSC	Net weight	11 Lbs. / 5.0 Kg
Connectivity	Screw terminals	Shipping weight	13.7 Lbs. / 6.2 Kg
Construction	Solid MDF, sealed back box	Assembly	Sweden; 100% QC testing

P5iCW



Wall cut-out = 12"x12" (305x305mm)
Weight = kg
Box volume = 5,5L
Package: 400x400x300mm



Procella P5iCW, Dimensions
Anders Uggelberg, 24apr-20
UPD:15/7
Scale 1:10 (PDF/JPG-file not to scale)
P5iCW_VUE.CAD

