

Building Community Trust

How Montgomery County Supports Immigrants
and New Neighbors



Luisa F. Cardona, Assistant Chief Administrative Officer

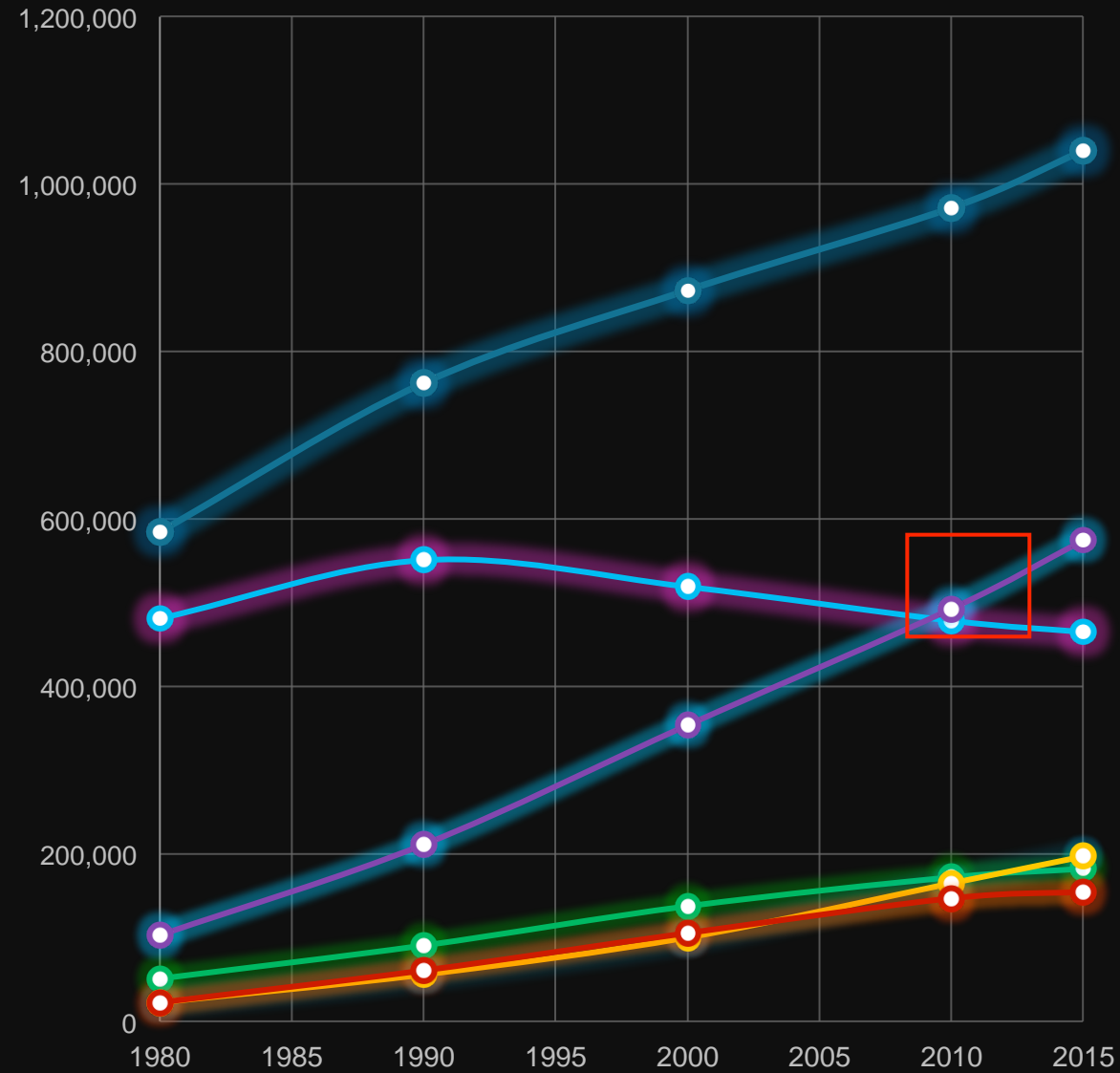


A CHANGING WORLD

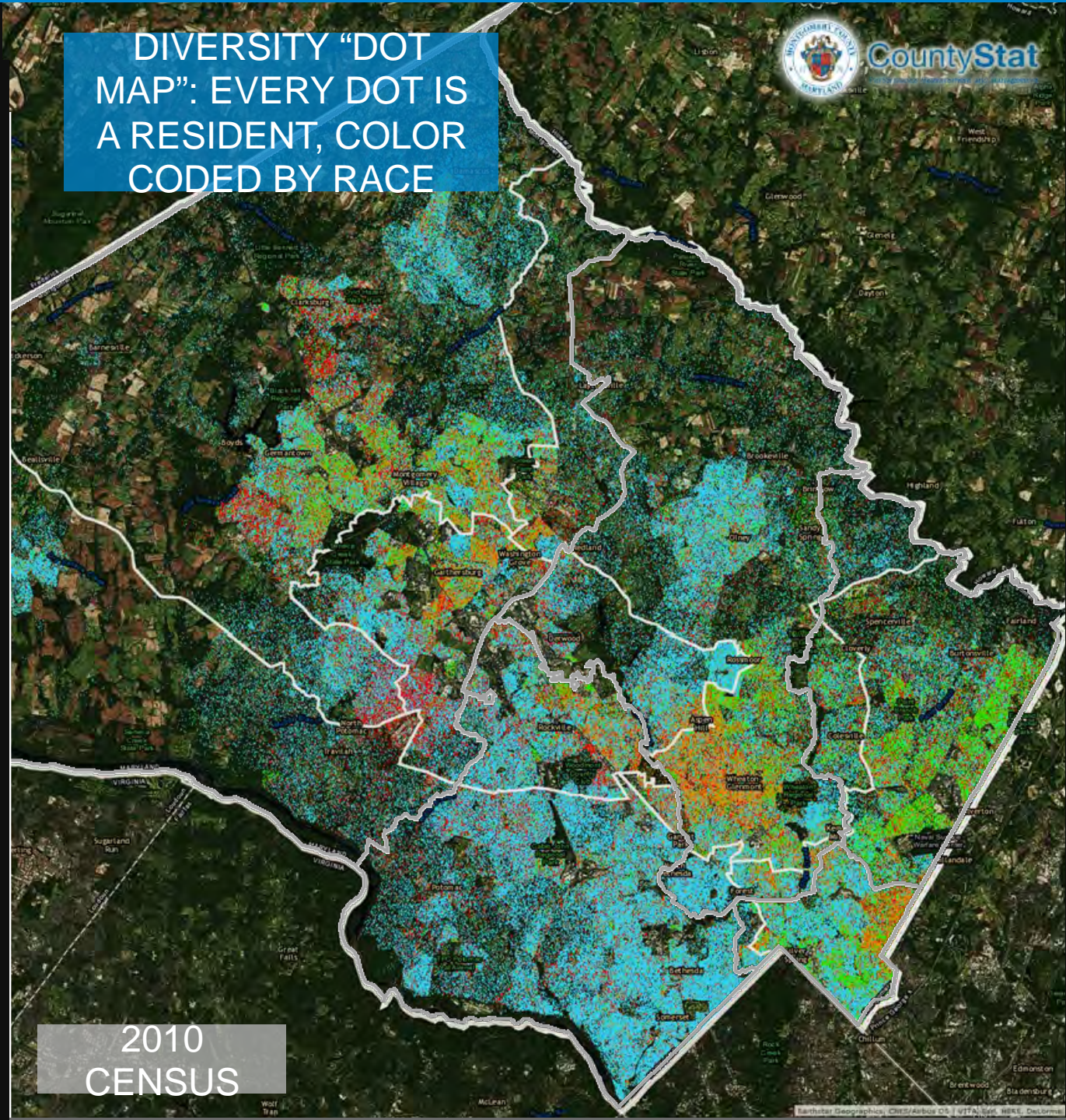
MONTGOMERY COUNTY, MD

Demographic Trends: Race and Ethnicity

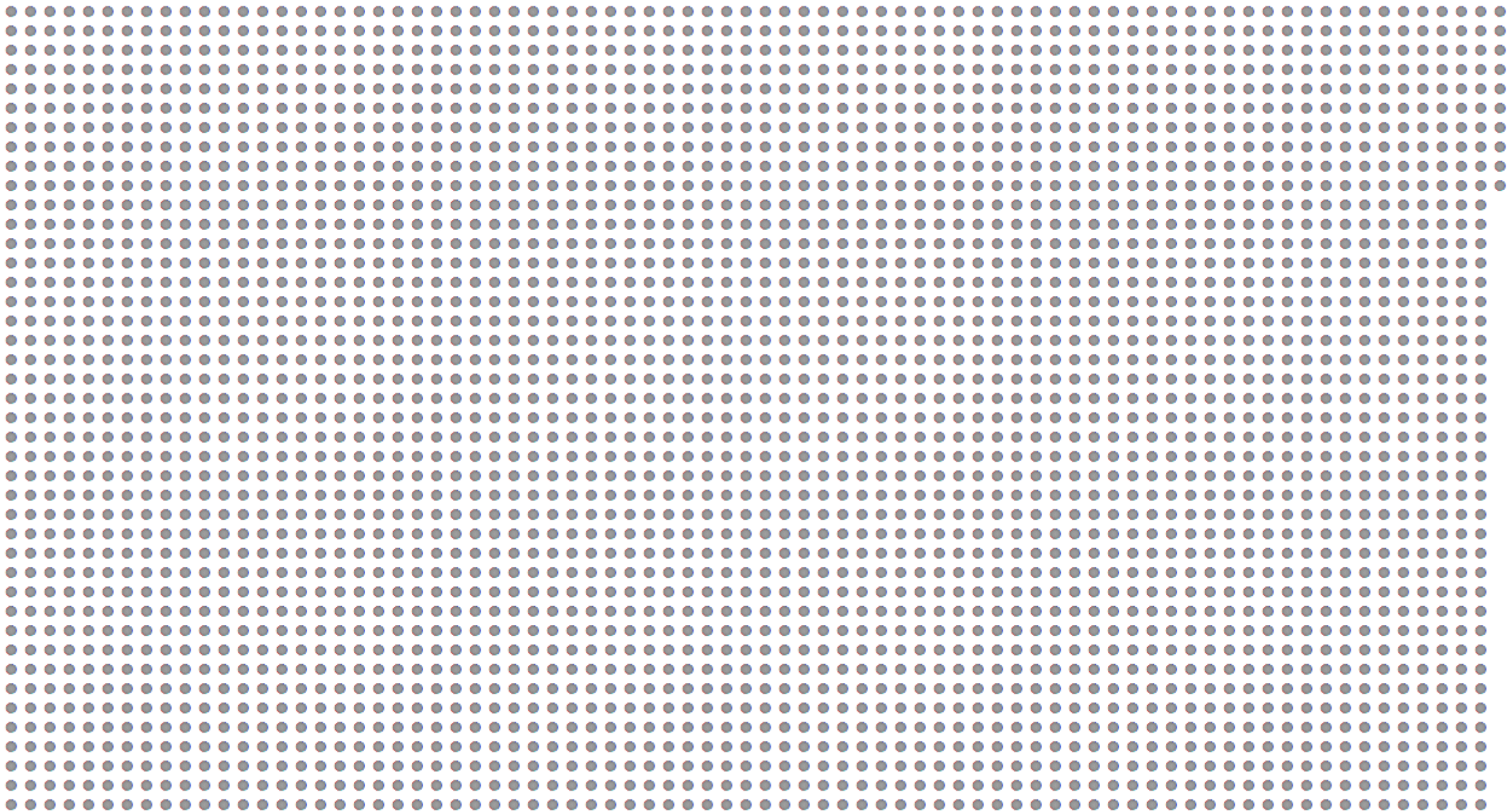
- Total Pop
- White (NH)
- Black (NH)
- Hispanic
- Asian
- NonWhite (NH)

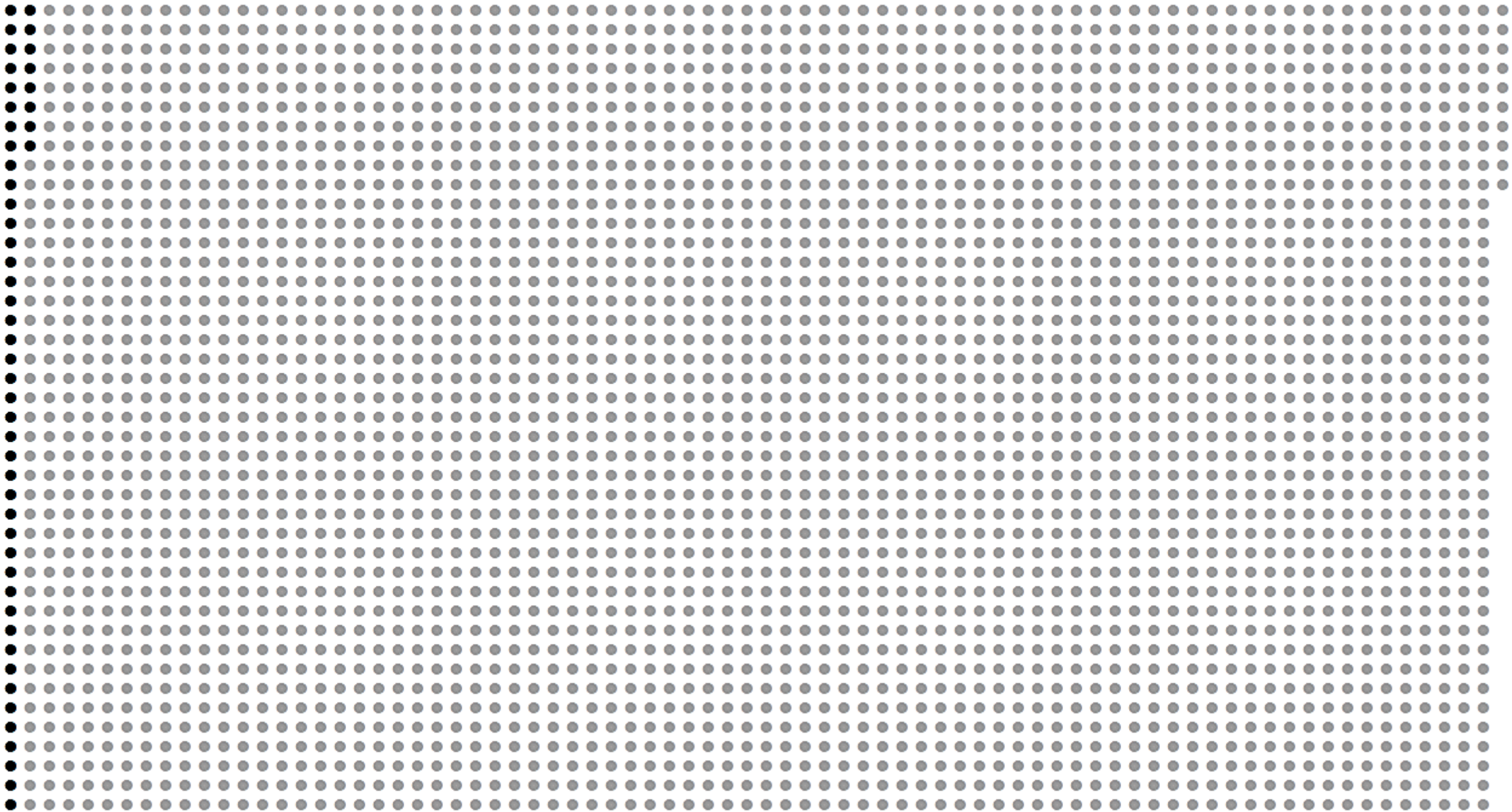


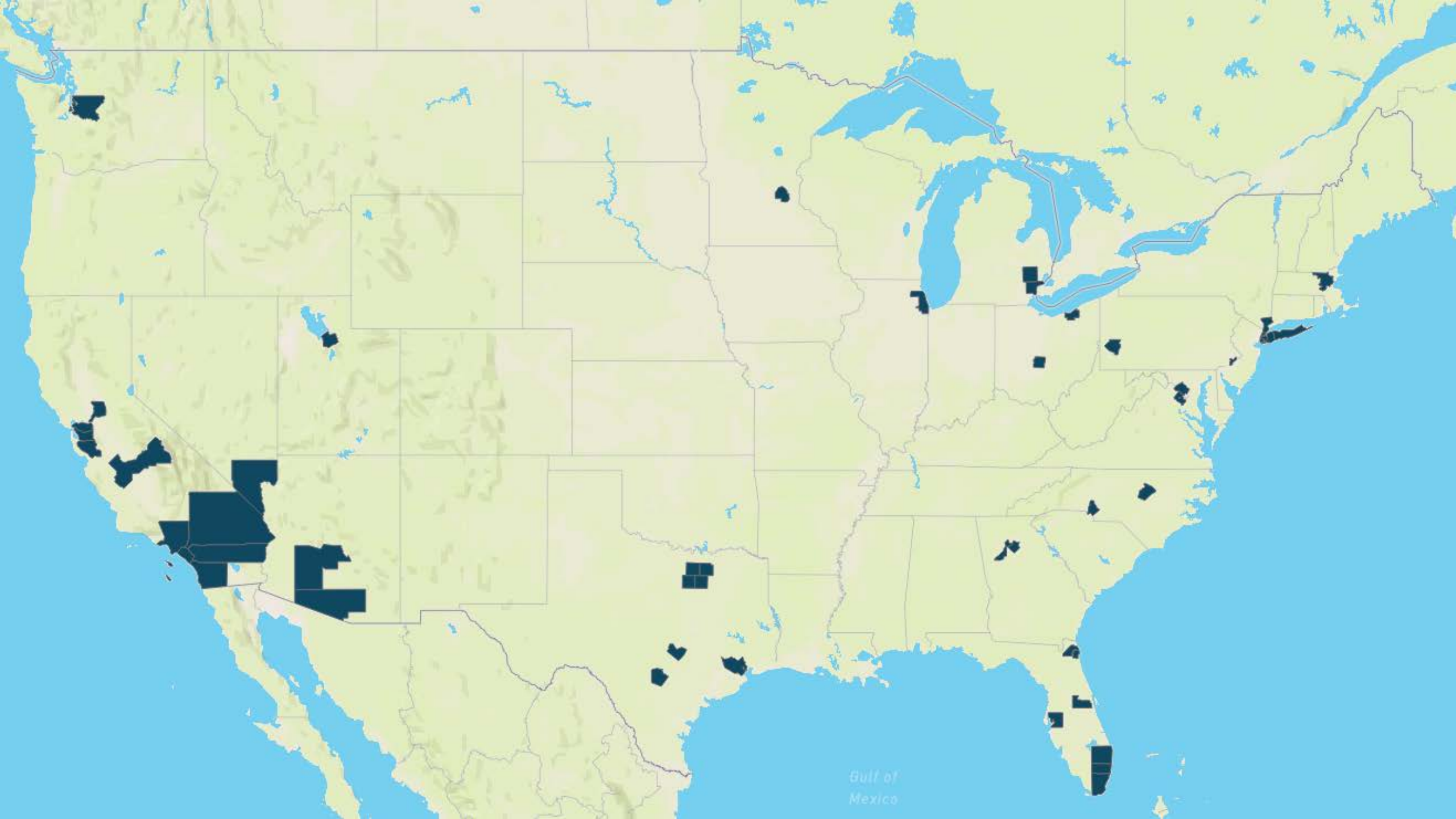
DIVERSITY "DOT MAP": EVERY DOT IS A RESIDENT, COLOR CODED BY RACE

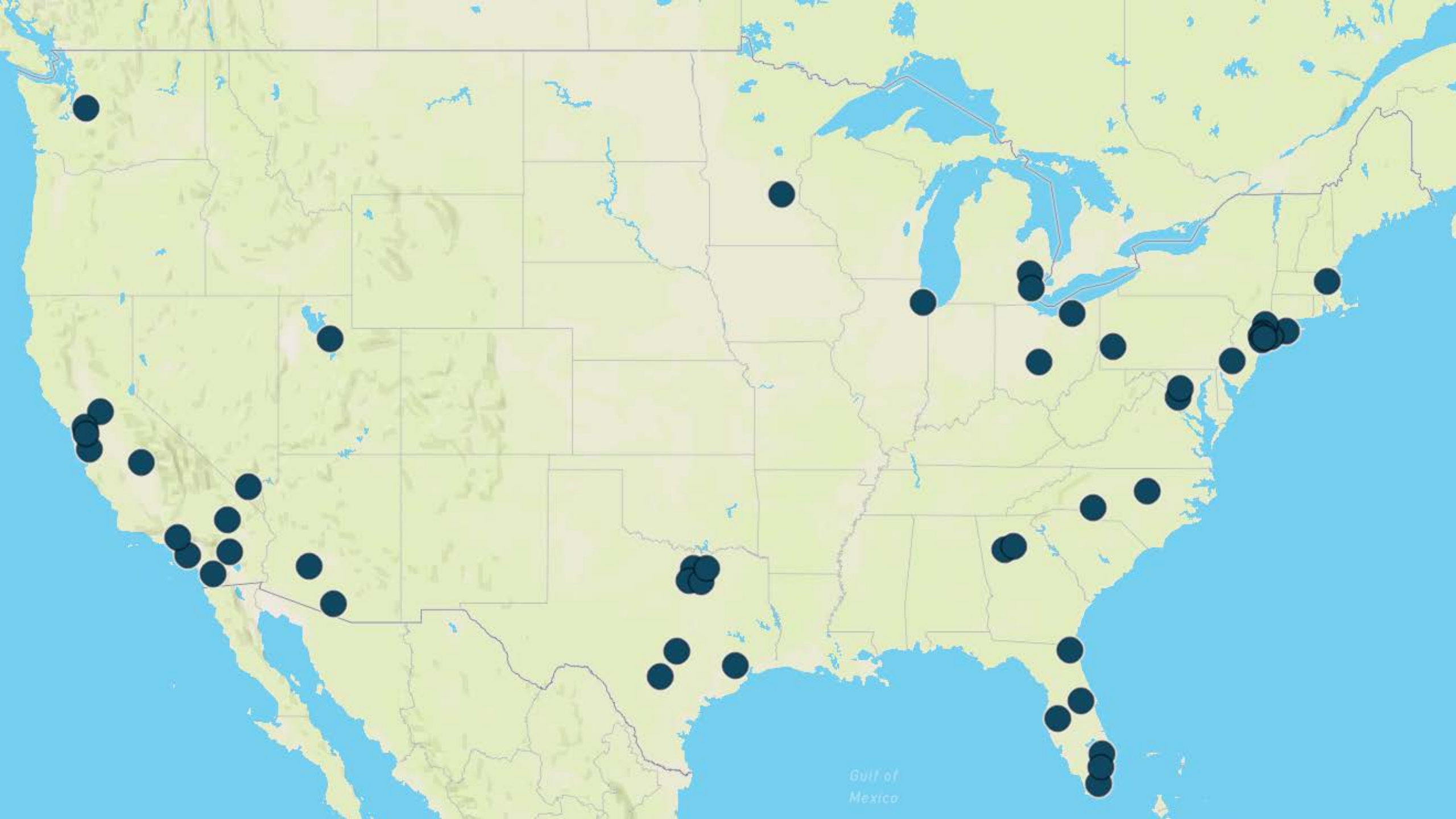


2010 CENSUS



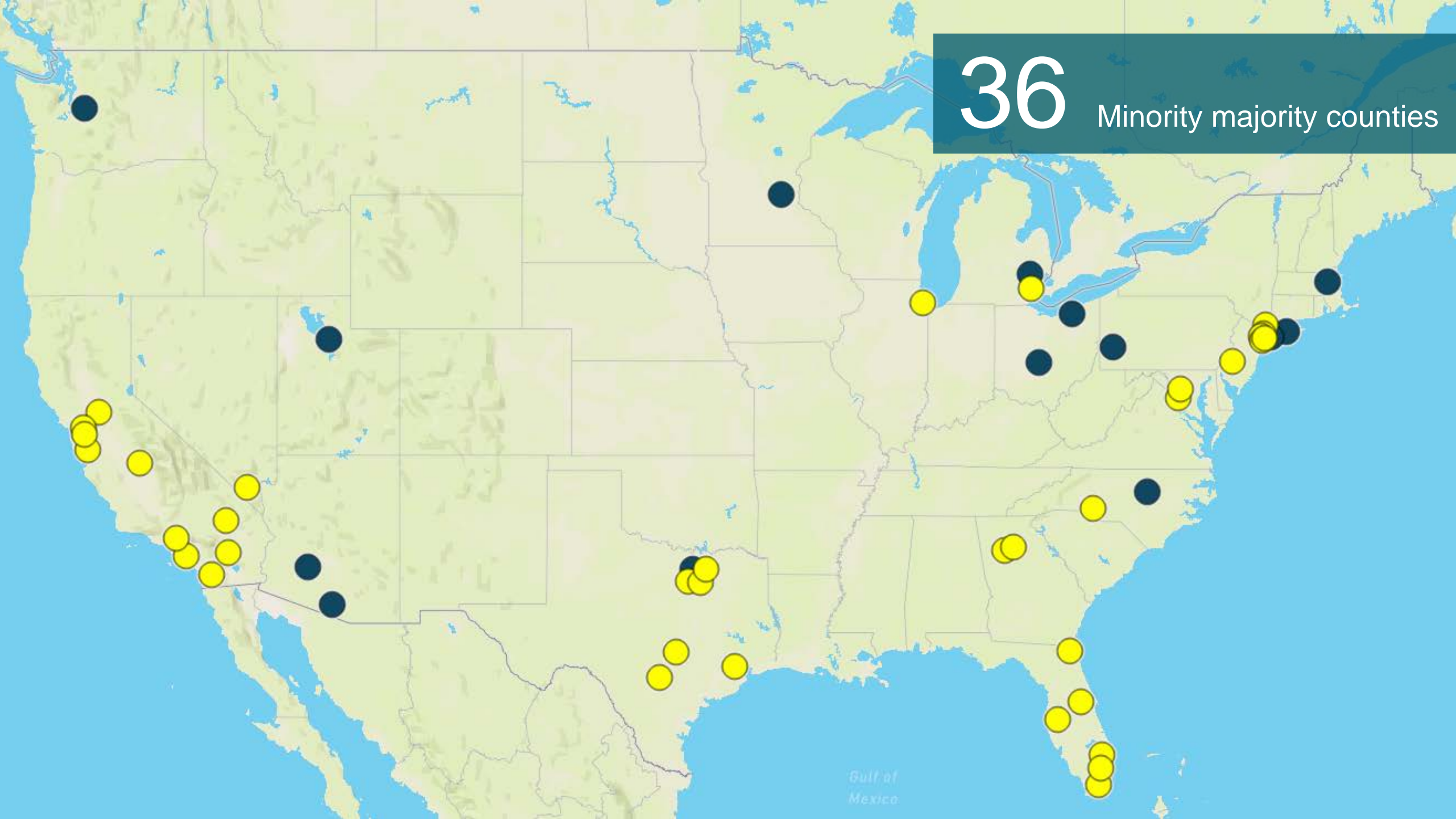




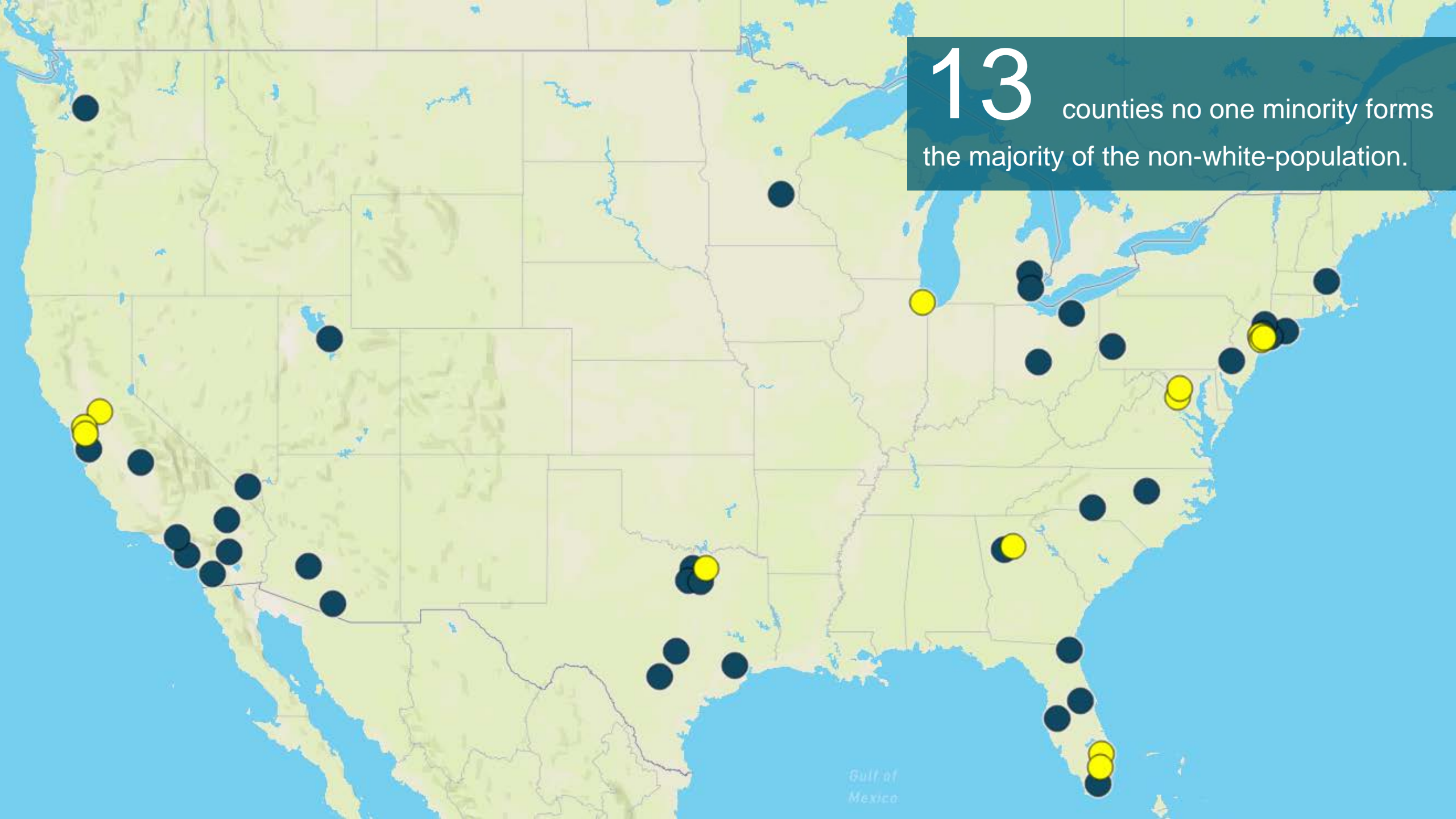


36

Minority majority counties

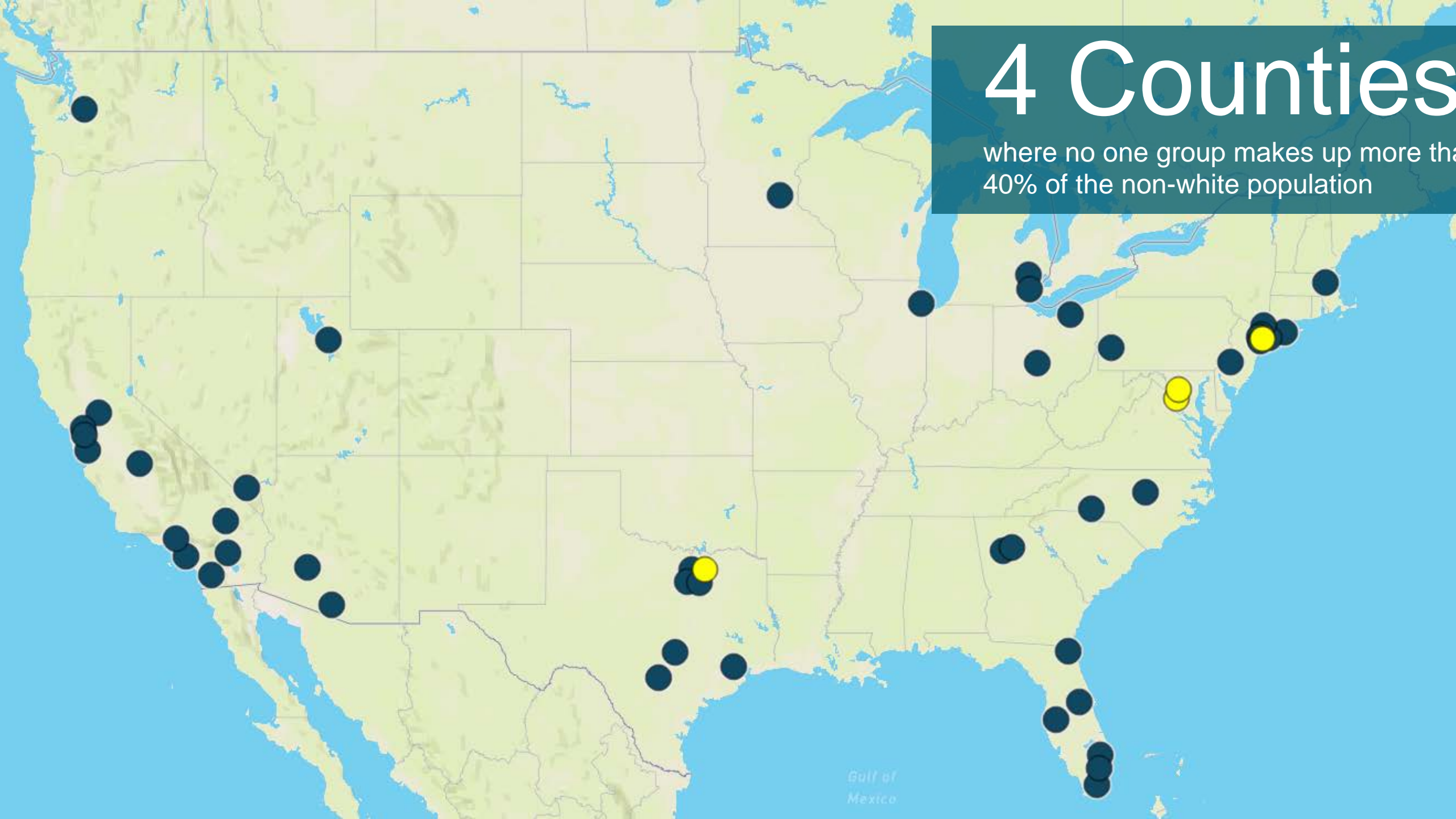


13 counties no one minority forms the majority of the non-white-population.

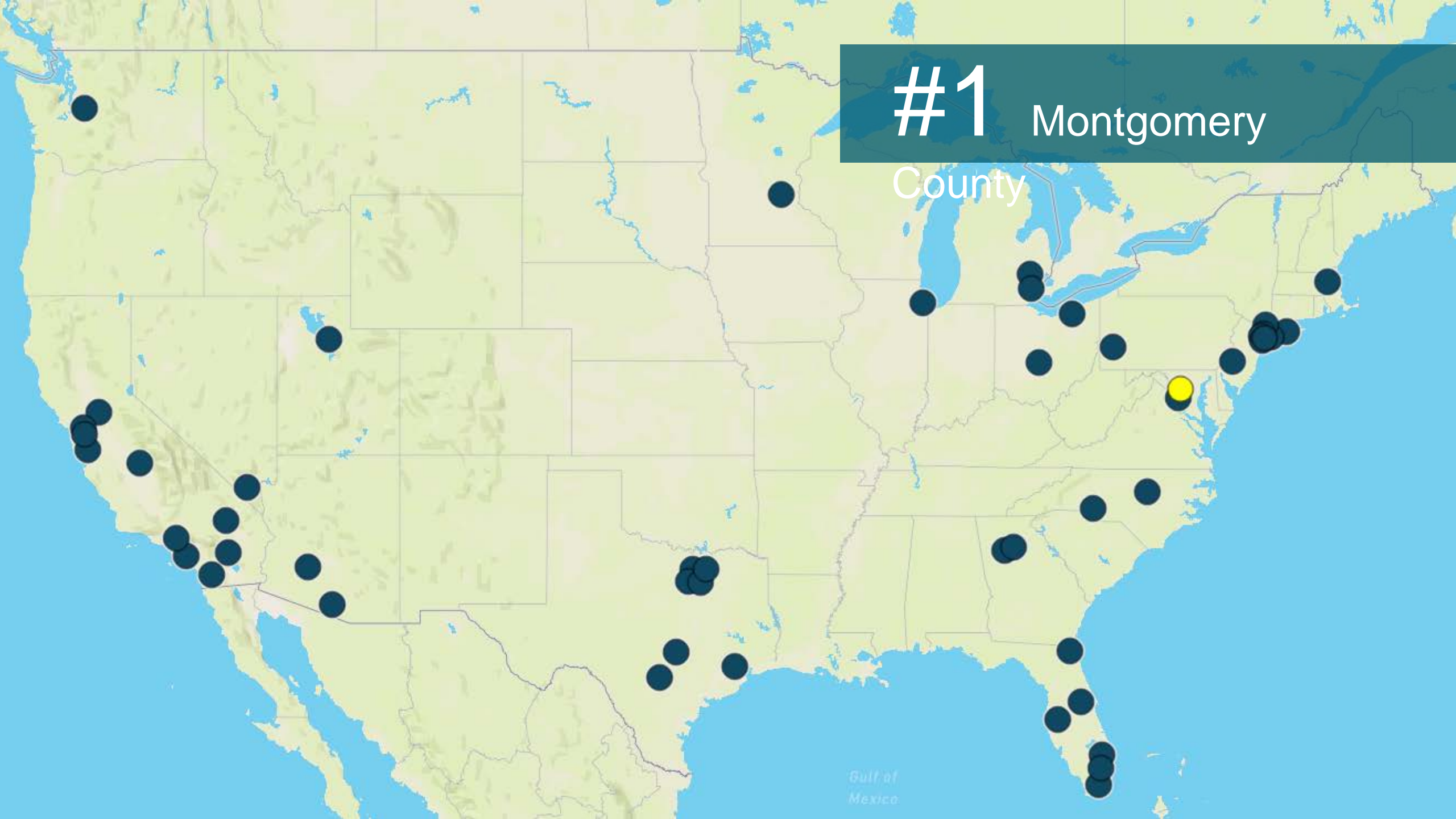


4 Counties

where no one group makes up more than 40% of the non-white population



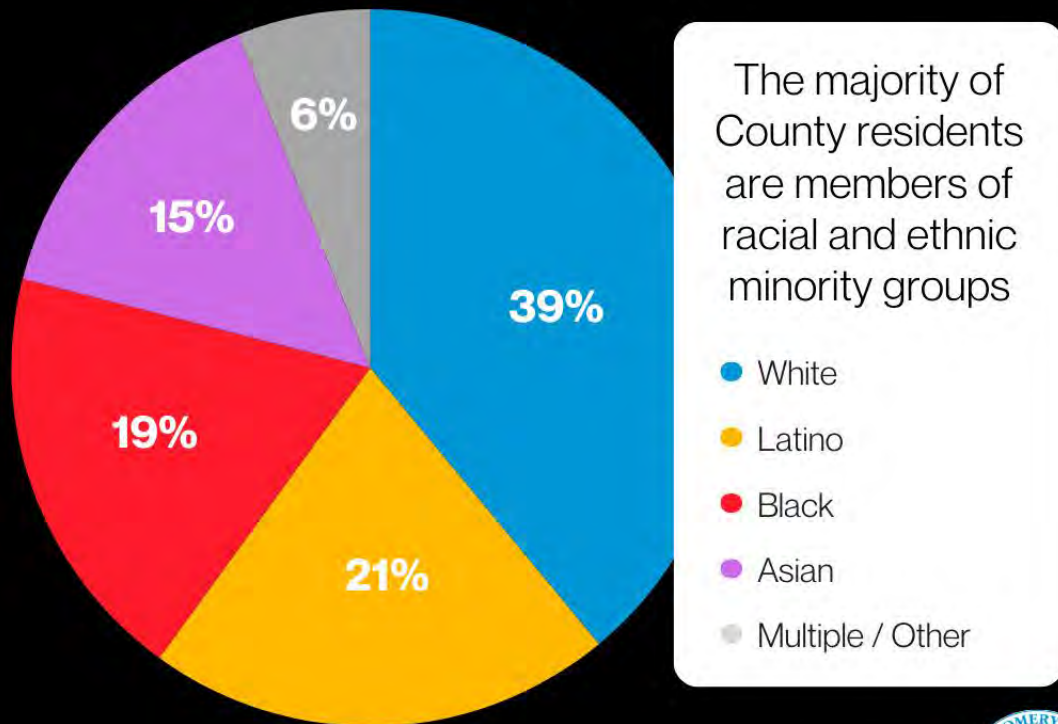
#1 Montgomery County



#YouBelong Campaign

Montgomery County is the most diverse County in the U.S.

Did you know of 3,400 Counties in the U.S. we rank
the highest?



U.S. Census Bureau, "ACS 1-Year Estimates Data Profiles," 2023

366,786 Total Foreign-Born Population

Approximately 1 in 3 residents in Montgomery County.



#YouBelong Campaign



U.S. Census Bureau, "QuickFacts: Montgomery County, Maryland," 2024



Residents report ancestry tracing back to
95 out of 104 countries
and regions in the world.

Montgomery County, Maryland has immigrants from many countries, including:

37% Latin America

37% of the county's immigrant residents ages 16 and older are from Latin America



11.7% El Salvador

11.7% of immigrants to Montgomery County are from El Salvador



4% Guatemala

4% of immigrants to Montgomery County are from Guatemala

10% Europe

10% of the county's immigrant residents ages 16 and older are European

37% Asia

37% of the county's immigrant residents ages 16 and older are of Asian origin



4.7% China

4.7% of immigrants to Montgomery County are from China



6.3% India

6.3% of immigrants to Montgomery County are from India

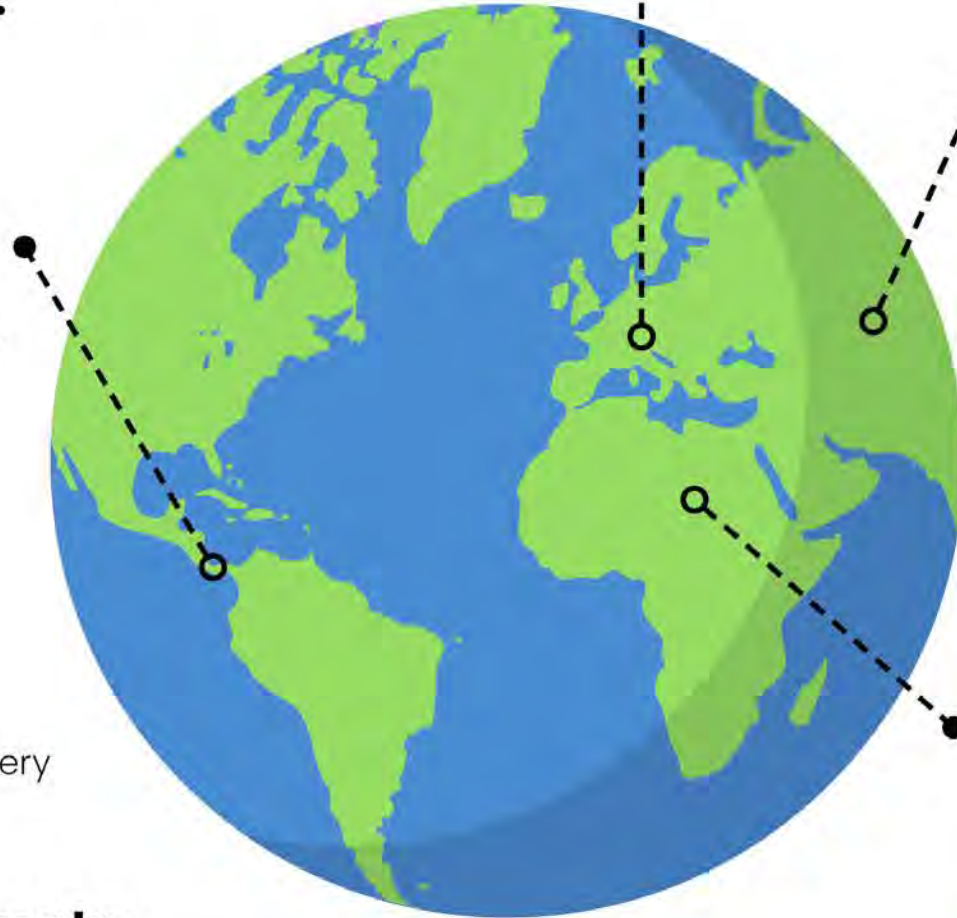
16% Africa

16% of the county's immigrant residents ages 16 and older are of African origin



4.7% Nigeria

4.7% of immigrants to Montgomery County are from Nigeria



#YouBelong Campaign

162

languages spoken by MCPS students, preparing them to lead in our global economy.



43%

residents speak a language other than English at home.



COUNTY DEMOGRAPHICS



#YouBelong Campaign



“

I STAND WITH IMMIGRANTS”

“Our County is made up of immigrants—diversity is not just something we celebrate; it is who we are. Immigrants have a proud history in this County, and are integral to its success. You belong here.”

— Marc Elrich, Montgomery County Executive



WHAT IS THE COUNTY'S POLICY?



TRUST ACT

EXECUTIVE ORDER 135-19 & BILL 35-25 Promoting Community Trust – Immigrant Protections Act





TRUST ACT- PROHIBITS



- Asking about immigration status (unless required by law)



- Threats



- Conditioning benefits, services, and opportunities



- Use of County resources (for CIVIL detainees)



TRUST ACT- PERMITS



- Asking for immigration status if required by law



- Honoring judicial warrants or orders



ATTENTION

ATENCIÓN



MONTGOMERY COUNTY STRIVES TO PROVIDE ESSENTIAL SERVICES TO MEMBERS OF THE PUBLIC REGARDLESS OF THEIR IMMIGRATION OR CITIZENSHIP STATUS.

EL CONDADO DE MONTGOMERY SE ESFUERZA POR BRINDAR SERVICIOS ESENCIALES A LOS MIEMBROS DEL PÚBLICO, INDEPENDIEMENTE DE SU ESTATUS MIGRATORIO O DE CIUDADANÍA

MONTGOMERY COUNTY
DOES NOT CONSENT TO THE CONDUCT OF CIVIL
IMMIGRATION ENFORCEMENT OPERATIONS ON THESE
PREMISES.

EL CONDADO DE MONTGOMERY **NO AUTORIZA** LA REALIZACIÓN DE OPERATIVOS CIVILES DE CONTROL MIGRATORIO EN ESTAS INSTALACIONES

Maryland Values Act and the Promoting Community Trust Order No. 135-19

Documents are available via SharePoint.



ATTENTION

ATENCIÓN



PRIVATE SPACE

ESPACIO PRIVADO



**ONLY AUTHORIZED COUNTY STAFF
OR MEMBERS OF THE PUBLIC
ACCOMPANIED BY AUTHORIZED
COUNTY STAFF PERMITTED**

**SOLO SE PERMITE EL ACCESO AL PERSONAL AUTORIZADO DEL
CONDADO O A MIEMBROS DEL PÚBLICO ACOMPAÑADOS POR DICHO
PERSONAL**

Documents are available via SharePoint.

Citizenship and Immigrant Support Resources

BE INFORMED →

Visit www.montgomerycountymd.gov/gilchrist or call 240-777-4940 to:

- Connect with local immigration organizations
- Find free or low-cost legal help
- Find classes and community programs
- Access resources in multiple languages

SCAN ME

Immigration Legal Services *Find help*

- Find community organizations that can answer immigration questions
- Learn about immigration legal services in your community

Know Your Rights *Be ready*

Find:

- Guides and flyers
- Printable cards to carry with you
- Hotlines, apps, and other tools

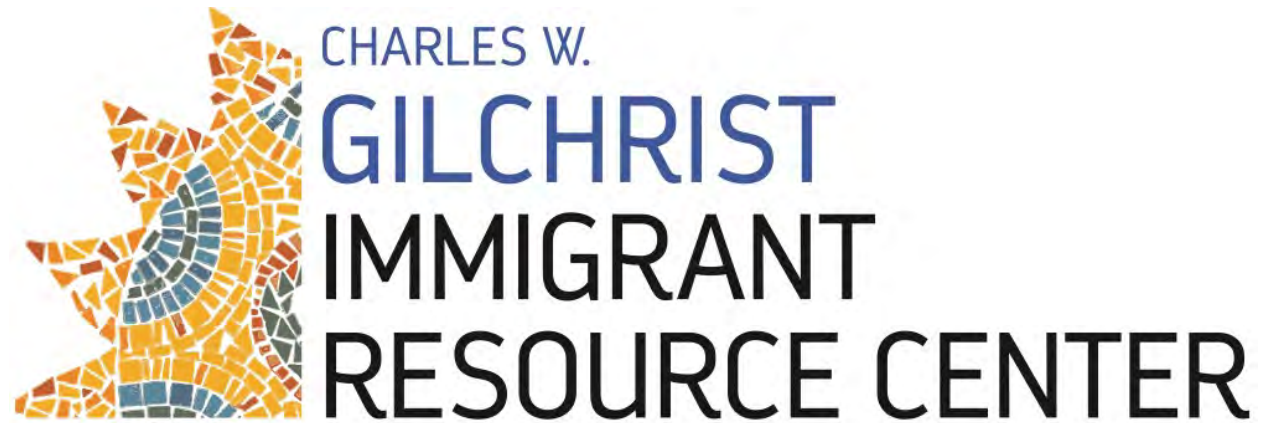
Family Preparedness *Make a plan*

- Create an emergency plan in case of separation with your loved ones.
- Learn about standby guardianship

Immigration Agencies *Find an answer*

Learn who to contact if you:

- Need to locate someone in detention
- Have a case in immigration court
- Have had contact with immigration agencies, and more



www.montgomerycountymd.gov/gilchrist/



Gilchrist Center Information & Referral Services

Wheaton (Westfield South Building)

- 240-777-4941
- Mon - Thurs: 9 am – 5 pm

East County (East County Regional Service Center)

- 240-777-8406
- Tuesdays: 9 am – 5 pm
- Thursdays: 9 am – 1 pm

Gaithersburg (2nd Floor of Gaithersburg Library)

- 240-777-4960
- Tuesdays & Thursdays: 3 pm – 8 pm
- Wednesdays & Fridays: 10 am – 3 pm



Gilchrist Center Information & Referral Services

We are here to help you in 3 convenient ways.

Call us

Call our Information & Referral Line at 240-777-4940, Monday to Friday, 9 am to 5pm.

Walk in

Walk in to one of our locations - no appointment needed.

Visit online

Visit our [Get Help](#) page to see our many online resources.

Immigrants and other newcomers to the County often have a wide variety of needs, but don't know where to go for help. The Gilchrist Center serves as a welcome center and gateway to help people navigate the many services Montgomery County has to offer, so they can get the help they need. Each of our sites has extensive information about local government and nonprofit resources that can help all County residents connect with food assistance, health care, legal services, housing information, job-related resources, and get help with other needs.



Citizenship and Immigrant Resource Corners

Libraries with Citizenship Corners:

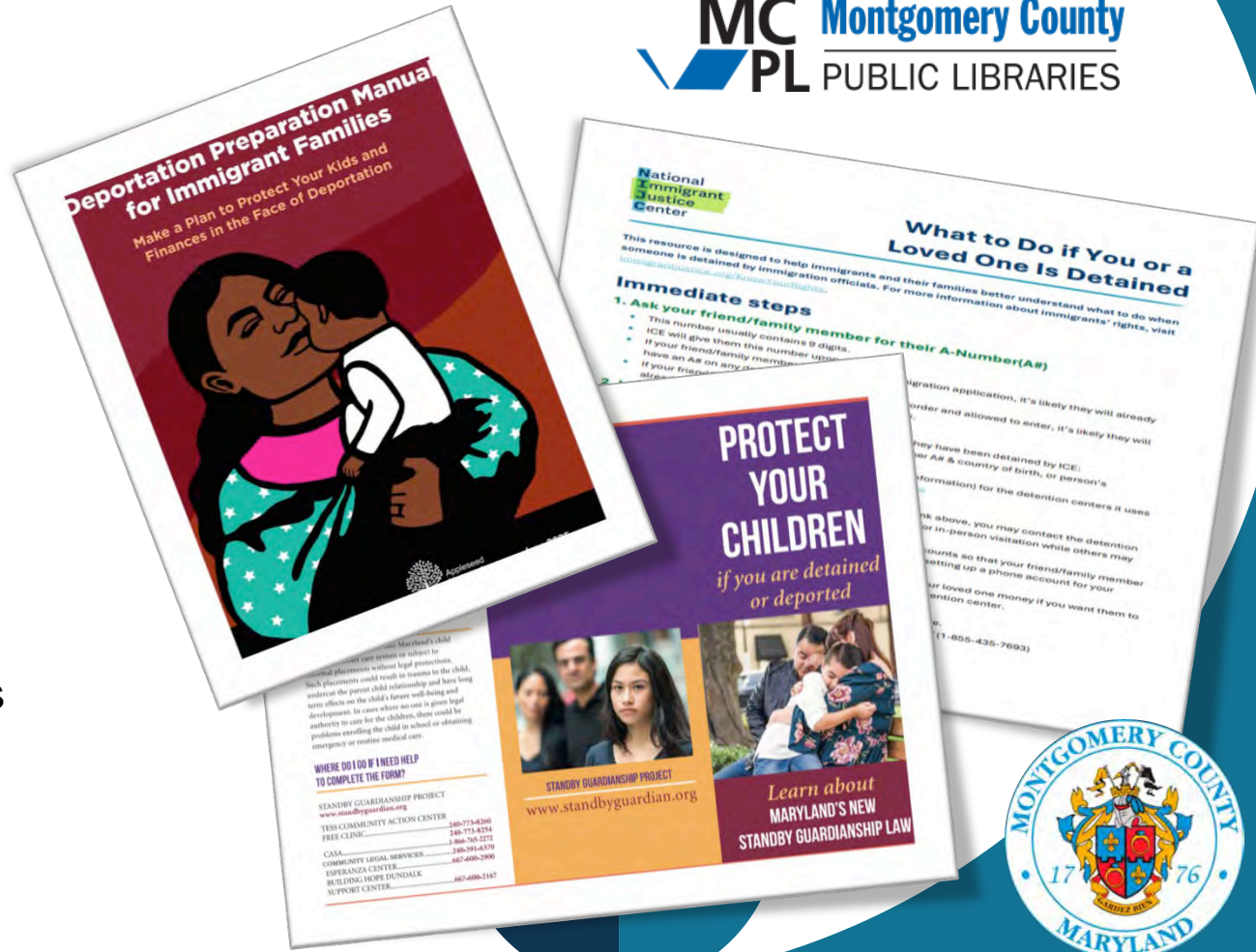
- Aspen Hill
- Brigadier General Charles E. McGee (Silver Spring)
- Damascus
- Gaithersburg
- Germantown
- Long Branch
- Rockville Memorial
- Twinbrook
- Wheaton
- White Oak



Expanded Citizenship and Immigrant Resource Corners

Library Locations with Citizenship Corners:

- **Know Your Rights**
 - Red Cards
 - What to Do if You or a Loved One Is Detained (Guide)
- **Family Preparedness**
 - Standby Guardianship Brochure
 - Preparedness Packets
- **Immigration Legal Services**
 - Pro Bono Program brochure
 - Resource list
 - Immigration legal services fraud resources
- **Immigration Agency Contact Info**



Direct County Services

- Outreach/Navigation
- Emergency support
- Intensive Case Management (ICM)
- Legal clinics: Immigration related consultation and assistance.
- Workforce development
- Health Care access
- Mental health services
- Family safety planning (i.e. guardianship, custody and emergency contact planning)
- School coordination
- *Direct legal representation is NOT is not directly provided through County services, but we can connect community to partners.



Call CASA's raid hotline at

1-888-214-6016

To report any ICE encounters

What's an ICE encounter look like?
ICE **stopping** someone
ICE **conducting** what looks like a raid
ICE **pulling** someone over



Llame a la línea directa de redadas de CASA

1-888-214-6016

Para informar cualquier encuentro con ICE

¿Cómo es un encuentro con ICE?
ICE deteniendo a alguien
ICE realizando lo que parece una redada
ICE deteniendo a alguien




Appelez la hotline de Raid de CASA au

1-888-214-6016

Pour signaler toute rencontre avec ICE

À quoi ressemble une rencontre avec ICE?
ICE arrête quelqu'un
ICE mène ce qui ressemble à un raid
ICE arrête quelqu'un





“Diversity is not just something we celebrate; it is who we are.”
Marc Elrich

Thank you.

