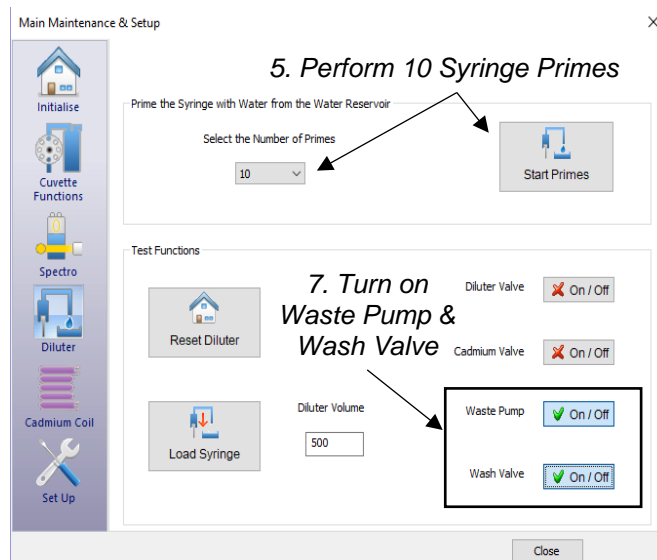


Customer Guidance: Storing a Discrete Instrument

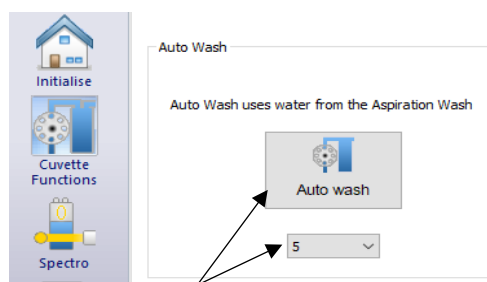
If the instrument is not going to be run for an extended period of time (over a month), it is recommended to remove water from the instrument. This prevents algae from potentially growing.

To drain the instrument, first ensure the instrument is not currently running but is turned on.

1. Remove the Cadmium Coil. Connect the PTFE tubing (hard, plastic tubing that was connected to the cadmium coil) of the cadmium loop with an approximately 2 inch piece of Cadmium Sleeve Tubing (SEAL part # 5719).
2. Remove the Water Level Sensor from the Water Reservoir.
3. Drain the Water Reservoir.
4. In the AQ Software, navigate to the **Maintenance and Setup** tab and then open the **Maintenance** menu.
5. After the instrument initializes, go to the **Diluter** section of the Maintenance menu.
6. Perform 10 syringe primes. During the primes, observe the syringe and verify that most of the water leaves the syringe by the end of the primes. There will always be about a ½ inch of water left in the bottom of the syringe. This is normal and will not cause any damage to the instrument.
7. After the syringe primes, locate the **Waste Pump** and **Wash Valve** buttons in the bottom-right corner of the Maintenance – Diluter screen. Click both of these buttons to set them to “On”. Observe the probe wash assembly on the bottom of the sample probe. Leave these switches on until water is no longer passing through the probe wash assembly. Once water has left the probe wash assembly, click the switches again to turn them off.

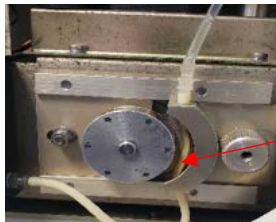


8. Use a transfer pipette to remove any water in the sampler wash well.
9. Navigate to the **Cuvette Functions** section of the Maintenance Menu. Perform two sets of five Auto-Washes. Ensure the aspiration line is drained of water. Use a transfer pipette to remove any additional water from the aspiration wash bath.



7. Perform two sets of five Auto-Washes

10. If your instrument contains pumps with an adjustable platen, loosen the thumb screws on these platens and slide the platen to be disengaged. Tighten the thumb screw to lock them in position. This will prevent the pump tube from having pressure applied consistently.



6. Lock
Peristaltic
Pump Platen in
"Released"

11. If your instrument contains pumps with blue and red covers, then release the covers and remove the pump tubes from the rollers.
12. Discard any waste.
13. Turn off the instrument and log out of the software.
14. Disconnect the USB cord to the computer and the power outlet.

The instrument is now ready to be stored until the next time it is in use.