

### **WHO IS GENERAL IRON?**

**A notorious and corrupt polluter, General Iron shreds scrap metal currently along the North Branch of the Chicago River. It's toxic pollution travels to southside and westside neighborhoods.**

**Neighbors have battled the company for years** for spewing toxic auto fluff (similar to insulation), generating nauseous odors, creating loud noises and endangering neighbors. Simply put: It's not a good neighbor.

### **ENVIRONMENTAL RACISM HAPPENING IN REAL TIME**

**Regulators, with the backing of state and city officials, have signed off for General Iron to move to Chicago's Southeast Neighborhood**, already overburdened with pollution and deemed an area of environmental justice. Hispanic and Black residents make up the majority of the neighborhood.

### **IMPACTS OF POLLUTION ON DISTANT NEIGHBORHOODS**

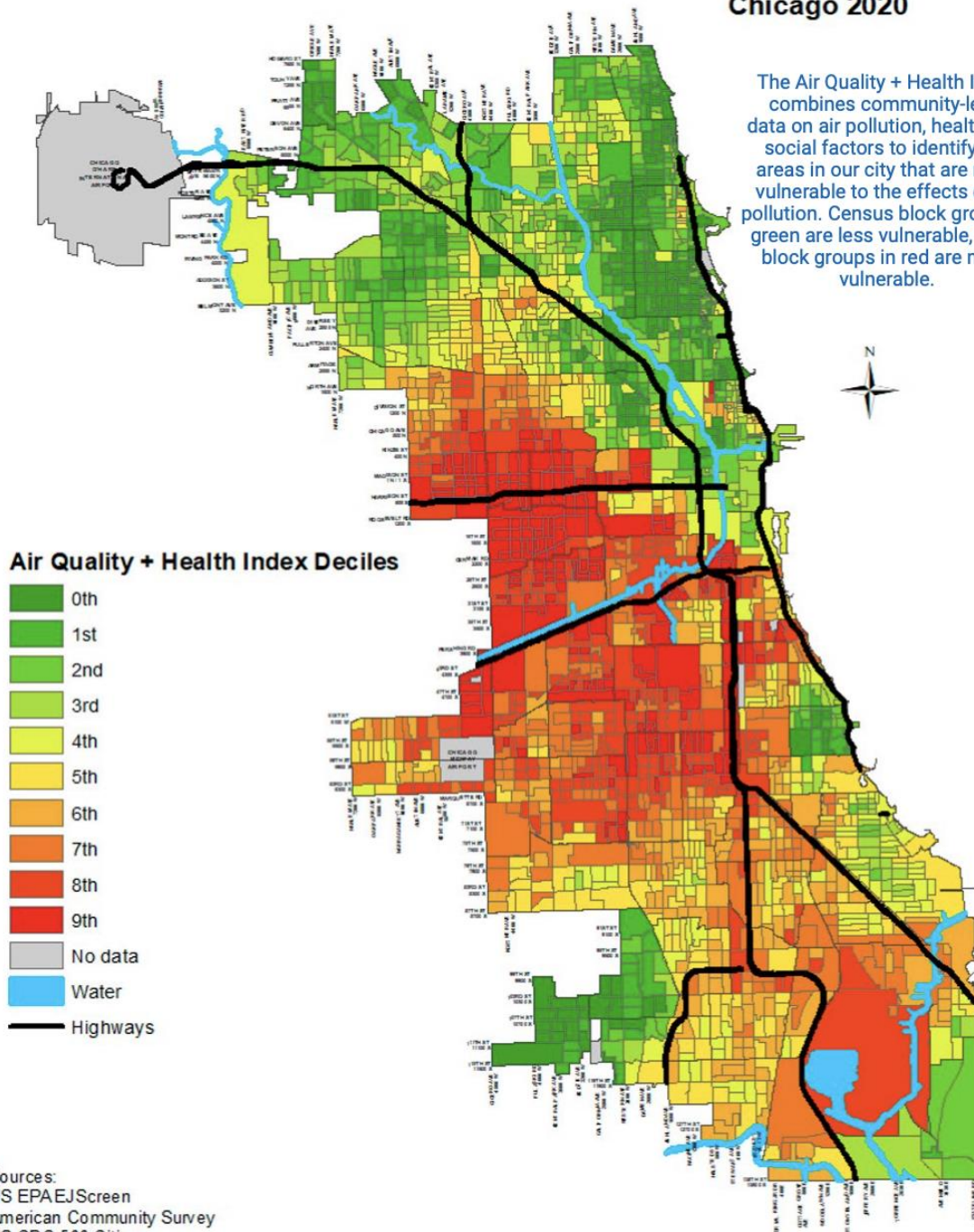
**General Iron's pollution does not abide by neighborhood boundaries.**

- The toxic fluff it emits—insulation-like material from shredded cars—falls across neighborhoods miles away.
- Fluff has been reported at a Home Depot more than a mile away; Pulaski Park (1.5 miles) and Eckhart Park (2 miles).

**A new air quality report from the City of Chicago shows that the Southeast side is one of the most polluted areas of the city already *without* General Iron.**

## Air Quality and Health Index, Chicago 2020

The Air Quality + Health Index combines community-level data on air pollution, health, and social factors to identify the areas in our city that are most vulnerable to the effects of air pollution. Census block groups in green are less vulnerable, while block groups in red are more vulnerable.



### PRESS VIEW OF THE ISSUE

- The press' coverage has overwhelmingly been critical of the company.