

Diabetes and Medications:

How medicines, other than insulin, work to control the sugar levels in your blood

The medications listed below help control your blood sugar. Each of them works with a different part of the body. People often need two to four different medications to help manage their blood sugar.



Names: Actos, Avandia

Generic: Pioglitazone, Rosiglitazone

Muscle Cells

Makes muscle, fat and liver cells more sensitive to insulin



Names: Glucophage, Glumetza

Generic: Metformin

Liver

Keeps liver from releasing too much glucose (sugar) and helps insulin work better

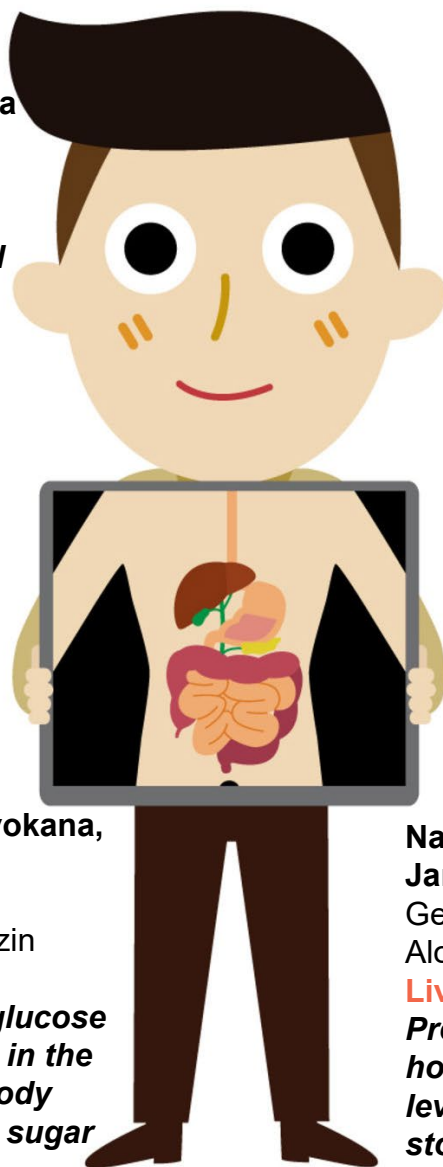


Names: Jardiance, Invokana, Farxiga

Generic: empagliflozin, canagliflozin, dapagliflozin

Kidneys

Increases amount of glucose (sugar) to be released in the urine and keeps the body from holding onto the sugar



Names: Victoza, Tanzeum, Trulicity, Byetta, Bydureon

Generic: Liraglutide, Albiglutide, Dulaglutide, Exenatide

Liver and Stomach

Increases insulin levels after eating, slows the stomach from emptying after meals, increases the sense of feeling full and keeps the liver from releasing glucose (sugar)

Names: Glynase, Diabeta, Glucotrol, Amaryl

Generic: Glyburide, Glipizide, Glimepiride

Pancreas

Increases insulin levels



Names: Trajenta, Onglyza, Nesina, Januvia

Generic: Linagliptin, Saxagliptin, Alogliptin, Sitagliptin

Liver, Pancreas and Stomach

Prolongs action of stomach hormones which increases insulin levels after eating, slows the stomach from emptying after meals, increases the feeling of fullness and keeps the liver from releasing glucose (sugar)

Less commonly prescribed medications:

Names: Starlix, Prandin

Generic: Nateglinide, Repaglinide

Pancreas

Increases insulin levels



Names: Precose, Glyset

Generic: Acarbose, Miglitol

Intestines

Slows digestion of some sugars

Diabetes Nutrition

Resources for healthy eating

American Diabetes Association www.diabetes.org

Academy of Nutrition and Dietetics www.eatright.org

American Heart Association www.heart.org

Association of Diabetes Care and Educational Specialists (ADCES)
www.diabeteseducator.org/living-with-diabetes

National Institutes of Health <https://medlineplus.gov/diabetes.html>

Centers for Disease Control
<https://www.cdc.gov/chronicdisease/resources/publications/factsheets/diabetes-prediabetes.htm>

Scan this code to access
diabetes applications for patients.



This material was prepared by Mountain-Pacific Quality Health, a Medicare Quality Innovation Network-Quality Improvement Organization (QIN-QIO), under contract with the Centers for Medicare & Medicaid Services (CMS), an agency of the U.S. Department of Health and Human Services (HHS). Views expressed in this material do not necessarily reflect the official views or policy of CMS or HHS, and any reference to a specific product or entity herein does not constitute endorsement of that product or entity by CMS or HHS. 12SOW-MPQHF-AS-CC-4/23-302