

2026.27 REGISTRATION

**Track D**

9<sup>TH</sup> - 12<sup>TH</sup> GRADE

# DANCE WITH US AT NEBRASKA DANCE

We believe each of our students are uniquely designed with a purpose; it is with them in mind that we desire to create programs each with their own mission and purpose. We whole-heartedly believe it is an honor and responsibility for you to trust your dancer and their dance journey in our care. We strive to create the best possible experience for our dancers in each of our unique programs. At Nebraska Dance, we believe a strong community helps us to reach our goals.

## TUITION

**1 class**

\$74/month

**2 classes**

\$126/month

**3 classes**

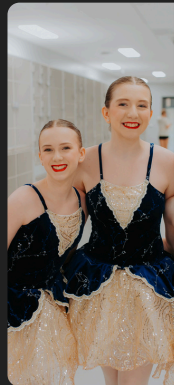
\$173/month

## REGISTER ONLINE

[nebraskadance.com](http://nebraskadance.com)

### PLEASE NOTE

Classes are subject to a minimum enrollment requirement





# 2026.27 TRACK D CLASSES

## LOCATIONS

Central Location - 11426 Davenport Street  
 Lighthouse Location - 11212 Chicago Circle  
 West Location - 18039 R Plaza

CENTRAL	MONDAY	TUESDAY	WEDNESDAY	THURSDAY	FRIDAY	SATURDAY
4:15 PM - 5:00 PM					Friday Ballet***	
5:00 PM - 5:45 PM						
5:45 PM - 6:30 PM					Friday Pointe/ Pre-Pointe***	
6:30 PM - 7:15 PM	Crew C/D Tap*	Tap C/D				
7:15 PM - 8:00 PM	Crew D Lyrical*	Lyrical/Cont D	Jazz C/D			
8:00 PM - 8:45 PM	Crew D Jazz*	Hip Hop D	Musical Theater C/D			
8:45 PM - 9:30 PM		Musical Theater D				
WEST	MONDAY	TUESDAY	WEDNESDAY	THURSDAY	FRIDAY	SATURDAY
7:15 PM - 8:00 PM	Jazz C/D	Musical Theater C/D	Crew D Hip Hop*	Crew C/D Tap*		
8:00 PM - 8:45 PM	Lyrical/Cont D	Hip Hop C/D	Crew D Lyrical*	Crew D Jazz*		
8:45 PM - 9:30 PM						

## NOTES

\*Crew Program has additional class requirements. Please review Crew paperwork or email Melissa at [myahnke@nebraskadance.com](mailto:myahnke@nebraskadance.com) for more information.

\*\*This class section will be divided into two groups based on dance experience and teacher evaluation (Crew)

\*\*\*This class does not perform in the dance concert