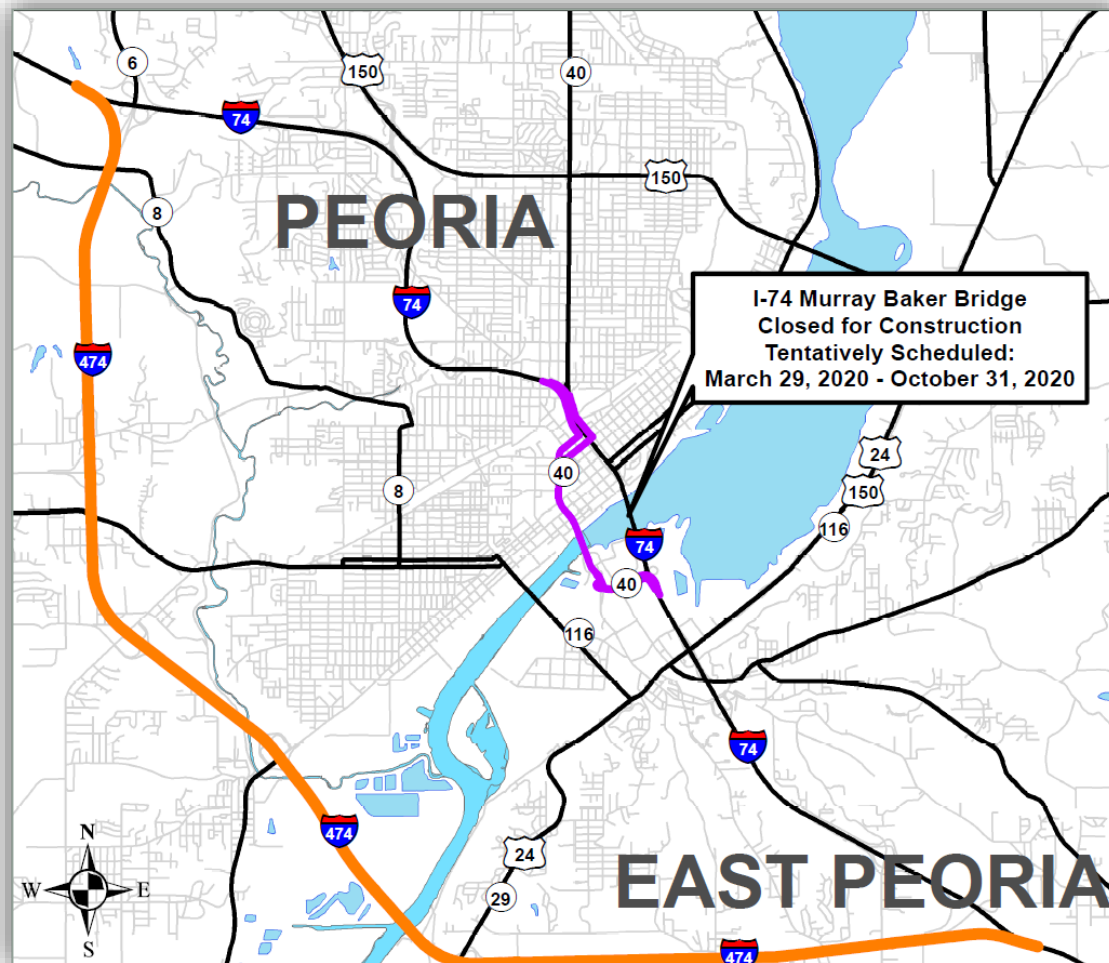


Murray Baker (I-74) Bridge Closure & Traffic Detours





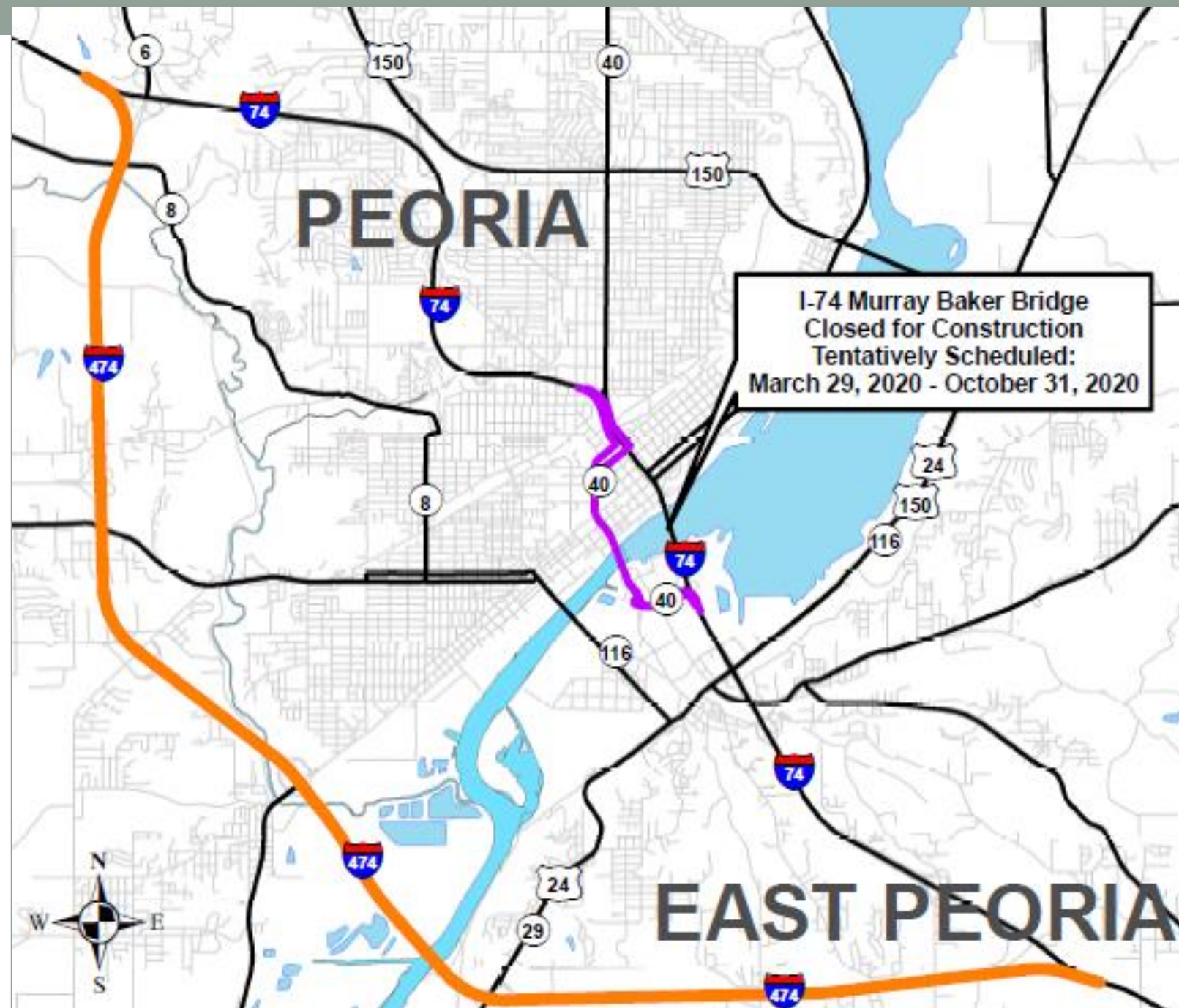
East Peoria
Chamber of Commerce
Eggs & Issues
February 7, 2020



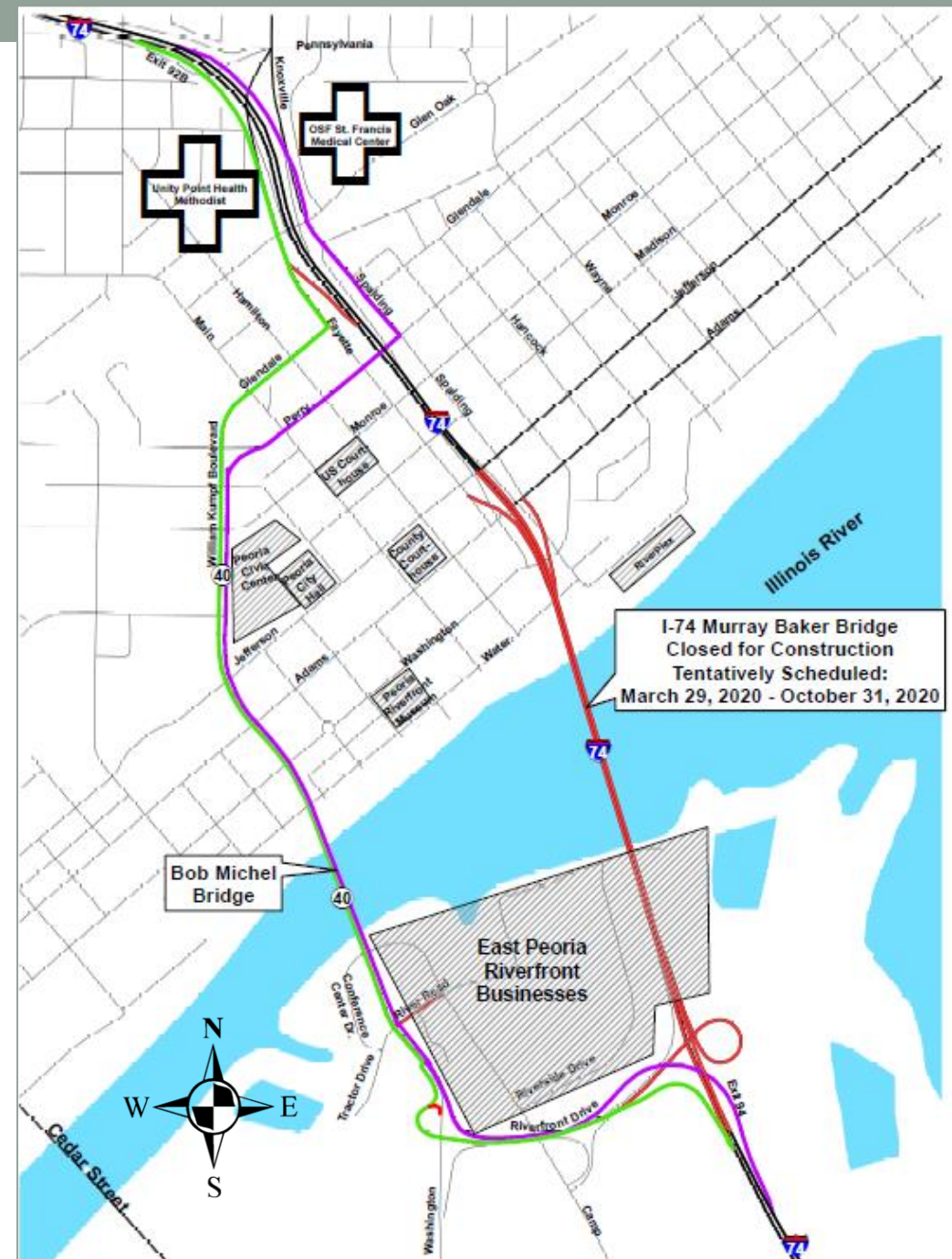
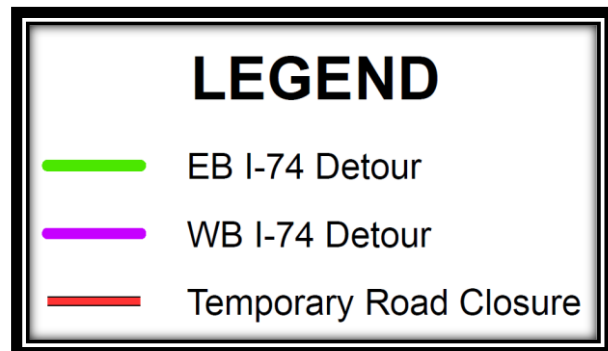
I-74 Detour Routes

LEGEND

-  Detour on IL Route 40 for local traffic
-  Detour on I-474 for through traffic



Local Traffic Detour (through Peoria & East Peoria)



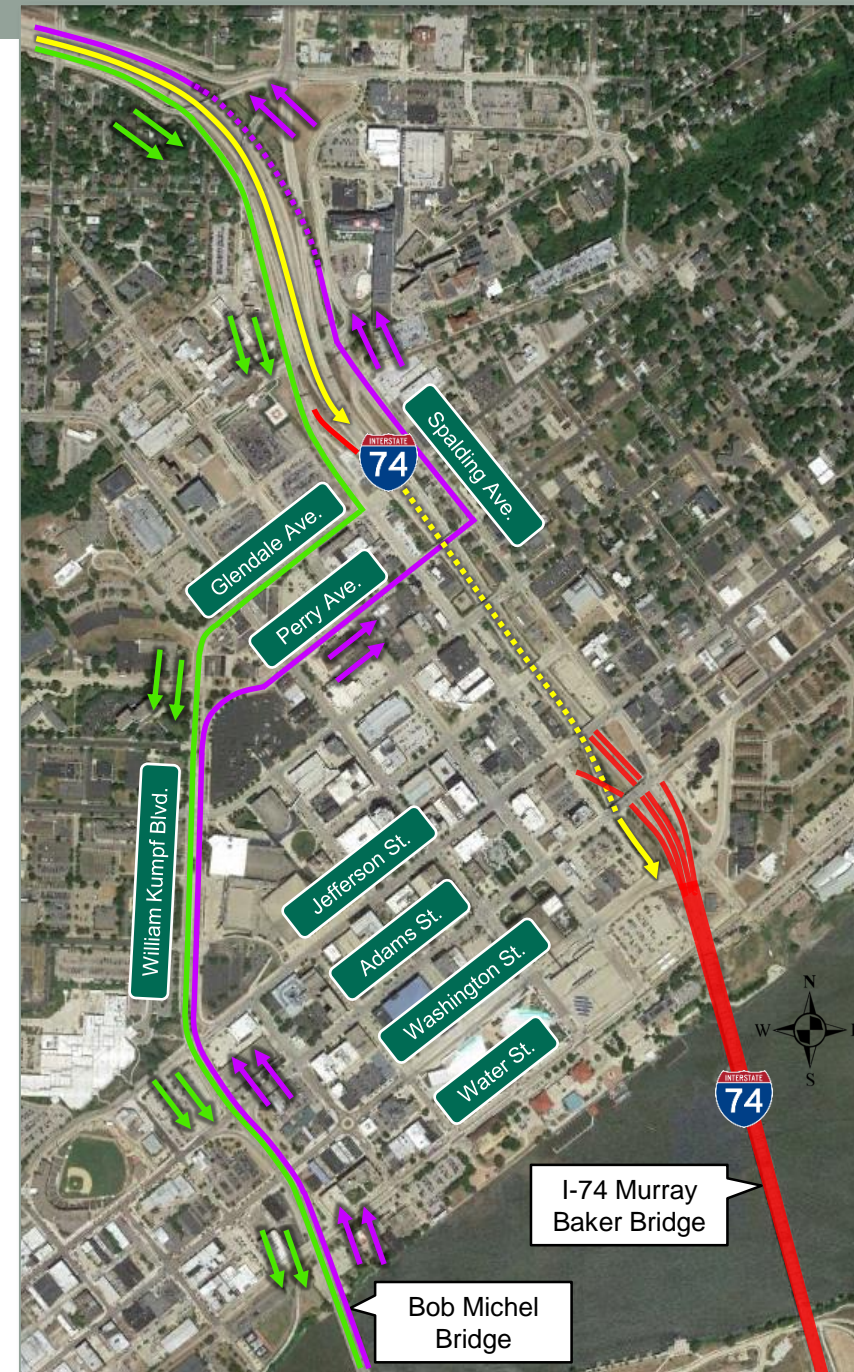
Local Traffic Detour (through Peoria)

LEGEND

EB I-74 Detour

WB I-74 Detour

Temporary Road Closure



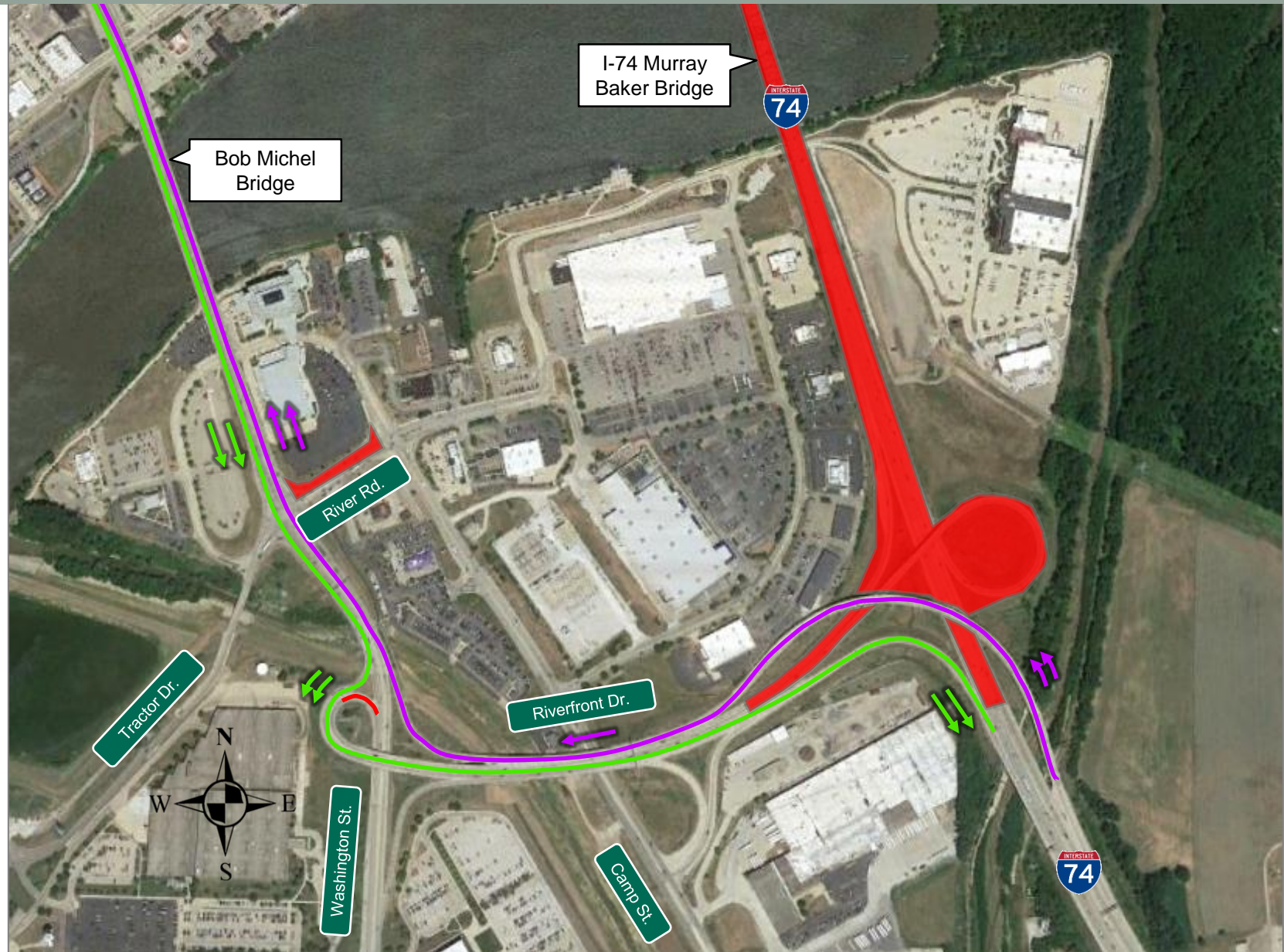
Local Traffic Detour (through East Peoria)

LEGEND

EB I-74 Detour

WB I-74 Detour

Temporary Road Closure



Detour Details

to Warehouse District,
Museum, Dozer Park, etc.

LEGEND

EB I-74 Detour

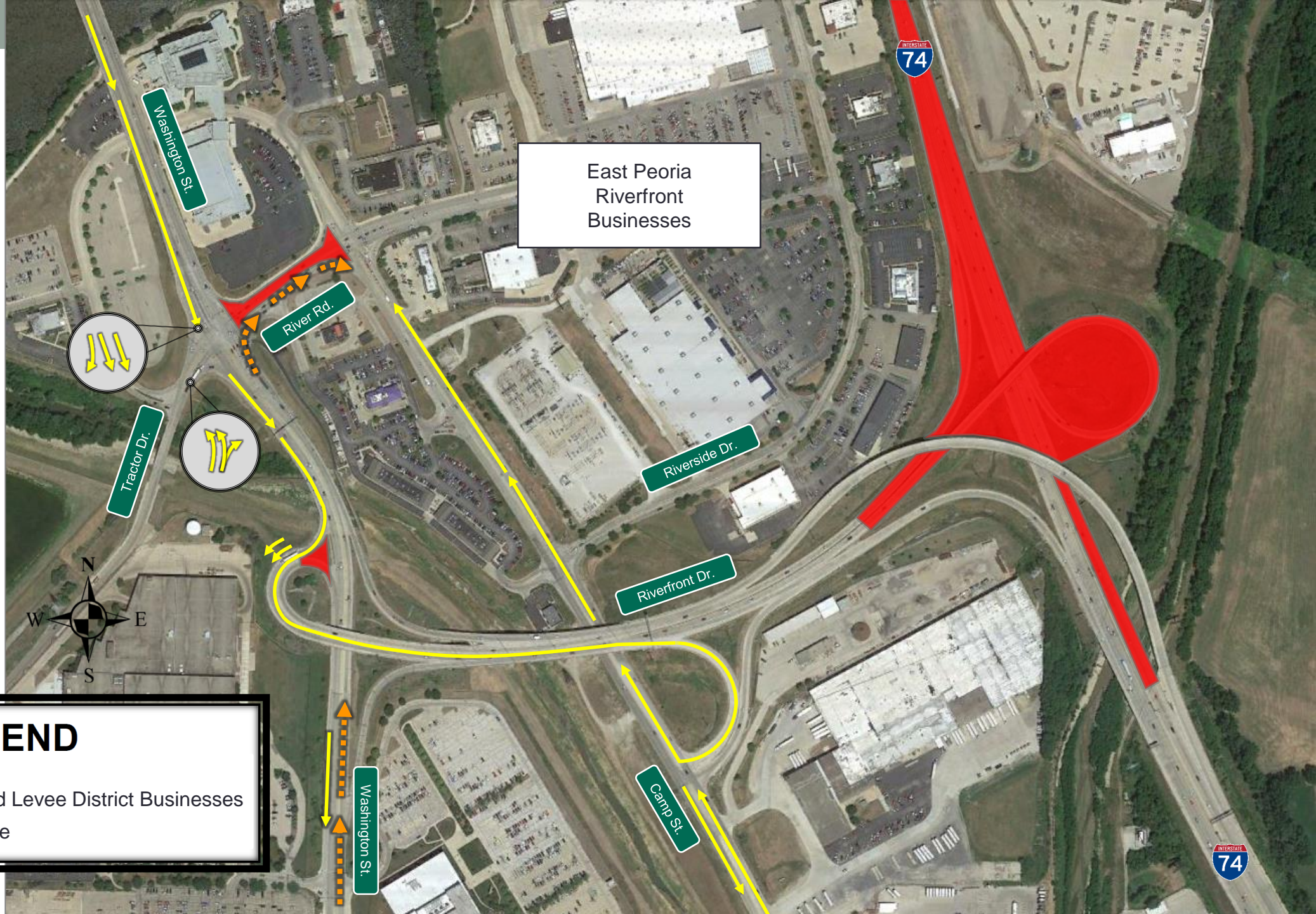
WB I-74 Detour

Temporary Road Closure





Detour Details

from Peoria
to Levee District
and Riverfront
Businesses



LEGEND



-  Access to Riverfront and Levee District Businesses
-  Temporary Road Closure

Detour Details

for East Peoria
to Levee District and
Riverfront Businesses



LEGEND

-  Access to Riverfront and Levee District Businesses
-  Temporary Road Closure

<http://www.gettingaroundpeoria.com/murraybakerdetour/index.html>

<http://www.gettingaroundpeoria.com/murraybakerdetour/index.html>

Murray Baker Bridge
Project



Project Description

Detour Maps

Detour Route Traffic
Cameras

Press Releases

Getting Around
Peoria

McClugage Bridge
Project

Contact IDOT



State of Illinois
Governor JB Pritzker

Murray Baker Bridge Rehabilitation Project



The Murray Baker Bridge carries Interstate 74 over the Illinois River between Peoria and East Peoria. The bridge is scheduled to be closed for rehabilitation from **March 29, 2020 to October 31, 2020**. Through traffic in the Peoria metro area will be detoured on Interstate 474 and local traffic will be detoured on Illinois Route 40 through Downtown Peoria and East Peoria.

Bridge Rehabilitation Scope of Work Includes:

- Replacement of concrete deck
- Repair of structural steel members
- Zone painting of the structural steel
- Replacement of roadway lighting
- Replacement of decorative lighting
- Installation of scour countermeasures

Questions?



