

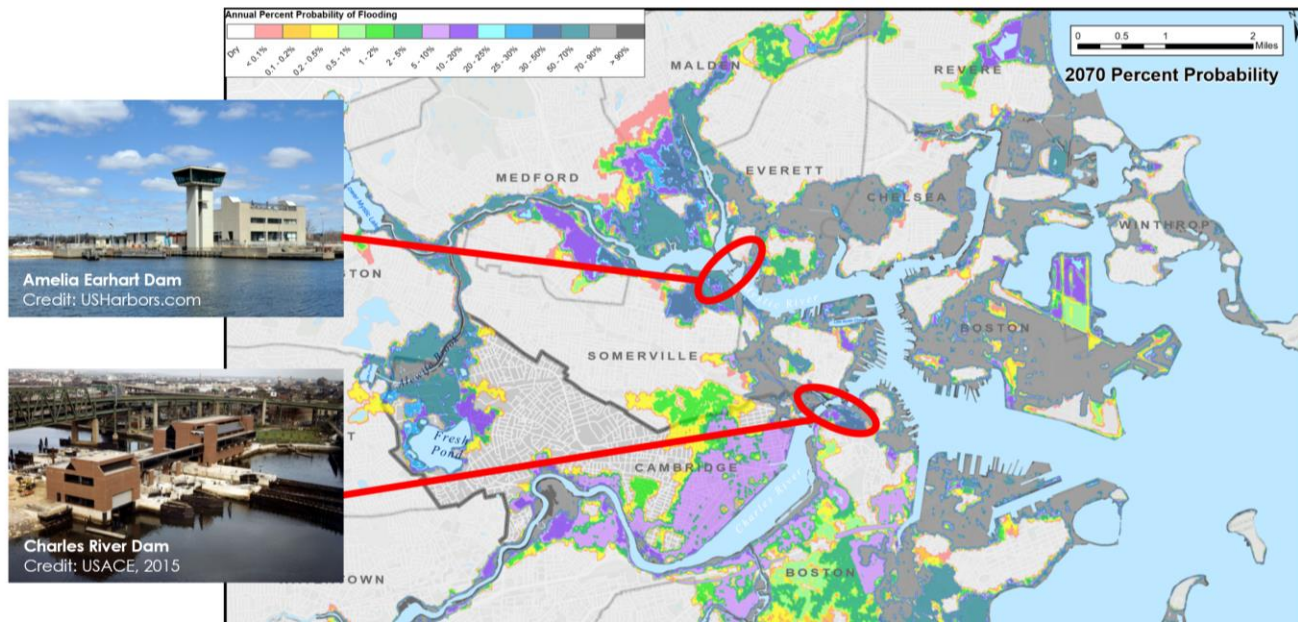
# 21 communities. One watershed.

We partner on climate challenges no  
single municipality can solve alone

[Learn More](#)

## 2070 projected coastal flooding

Source: MC-FRM v11 January, 2021



Resilient Mystic  
Collaborative

Boat Tour  
November 5, 2021



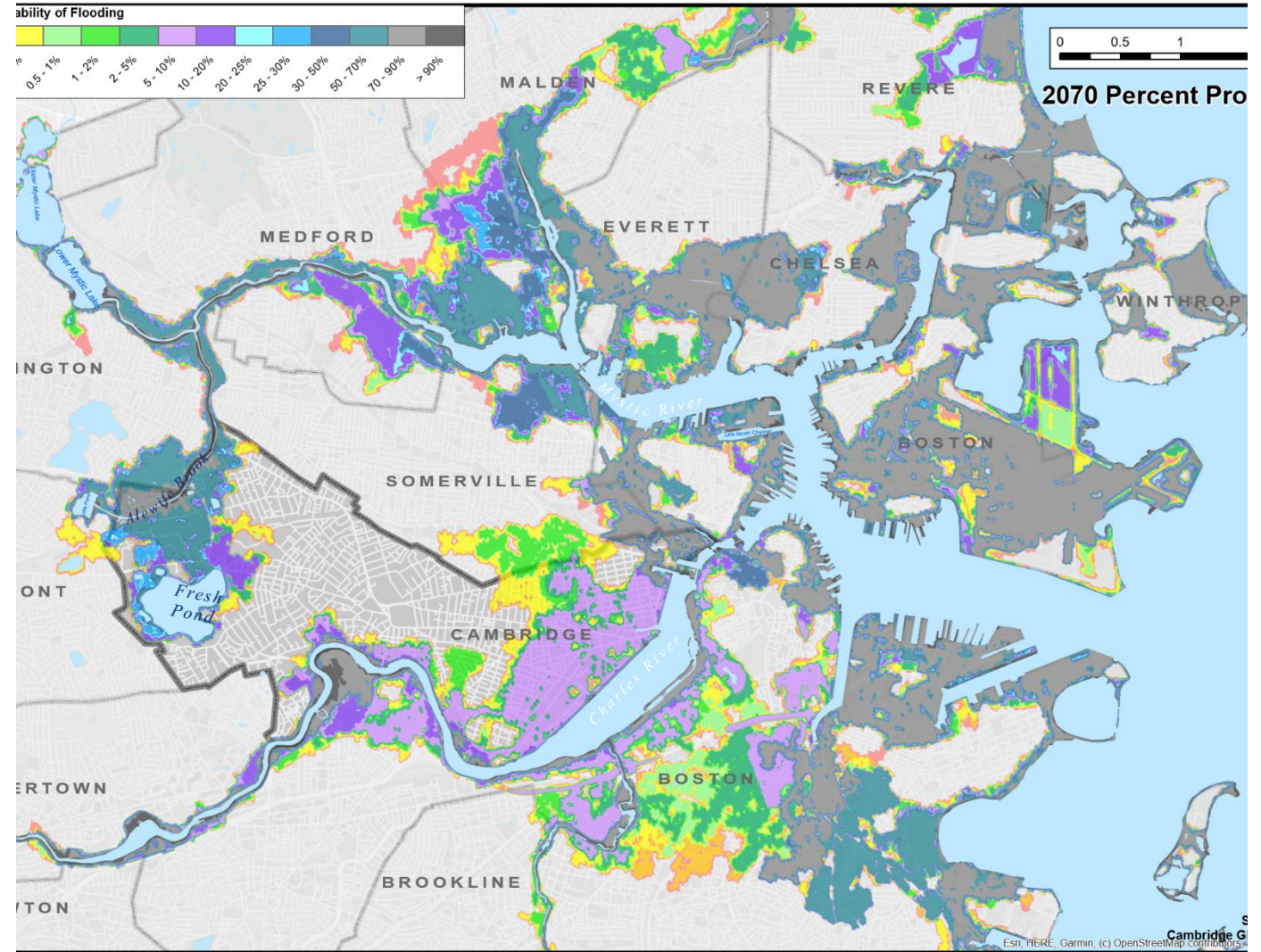
# 2070 projected coastal flooding, if we do nothing

**Chelsea, Everett, Revere** –  
Every 18 months.

**Arlington, Belmont,  
Cambridge (Alewife), Malden,  
Medford, Somerville**  
Every two years.

**Watertown** Every 5-10 years.

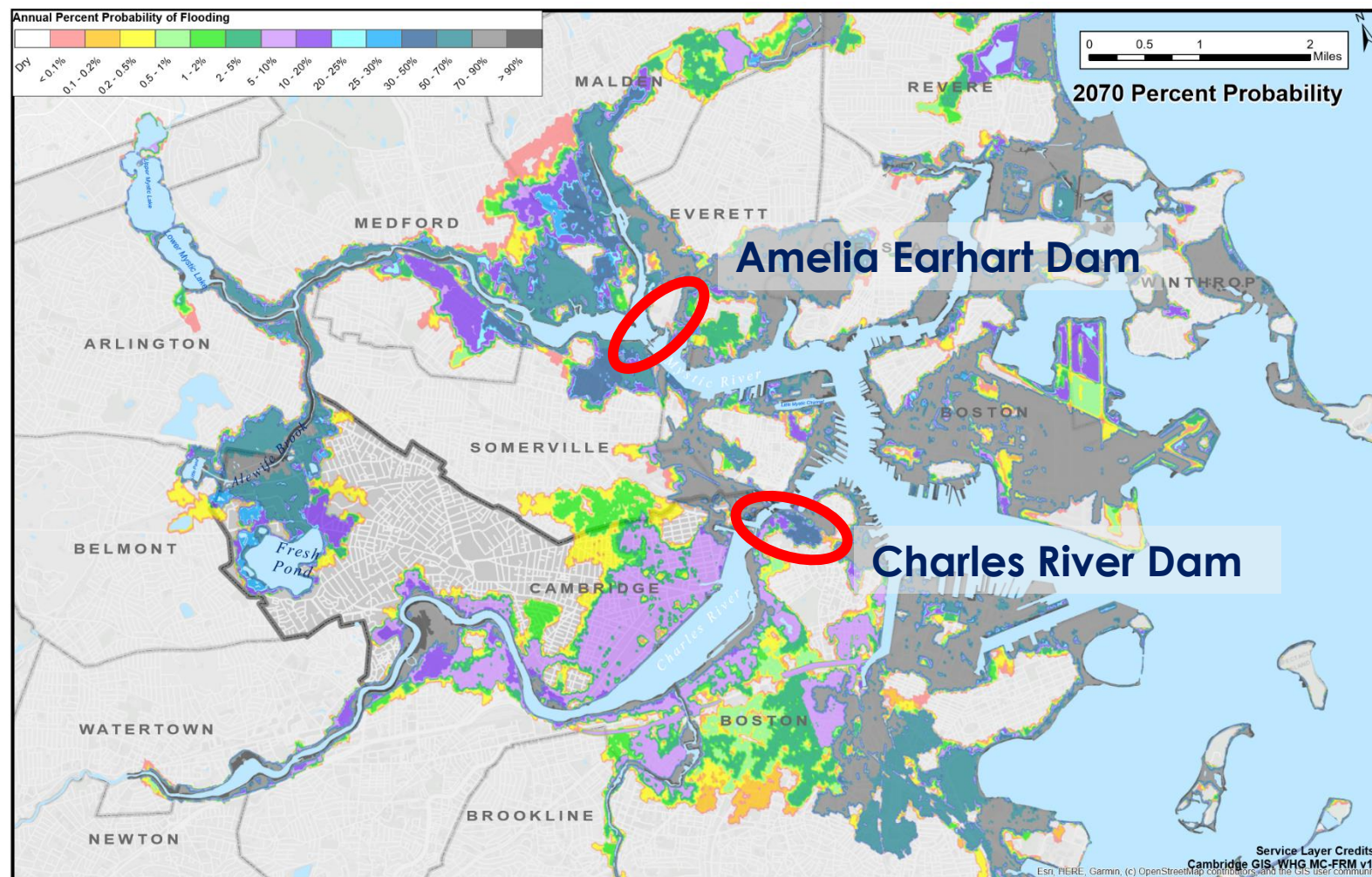
**Boston (BackBay), Brookline,  
Cambridge (Kendall Sq)** –  
Every 10-20 years.





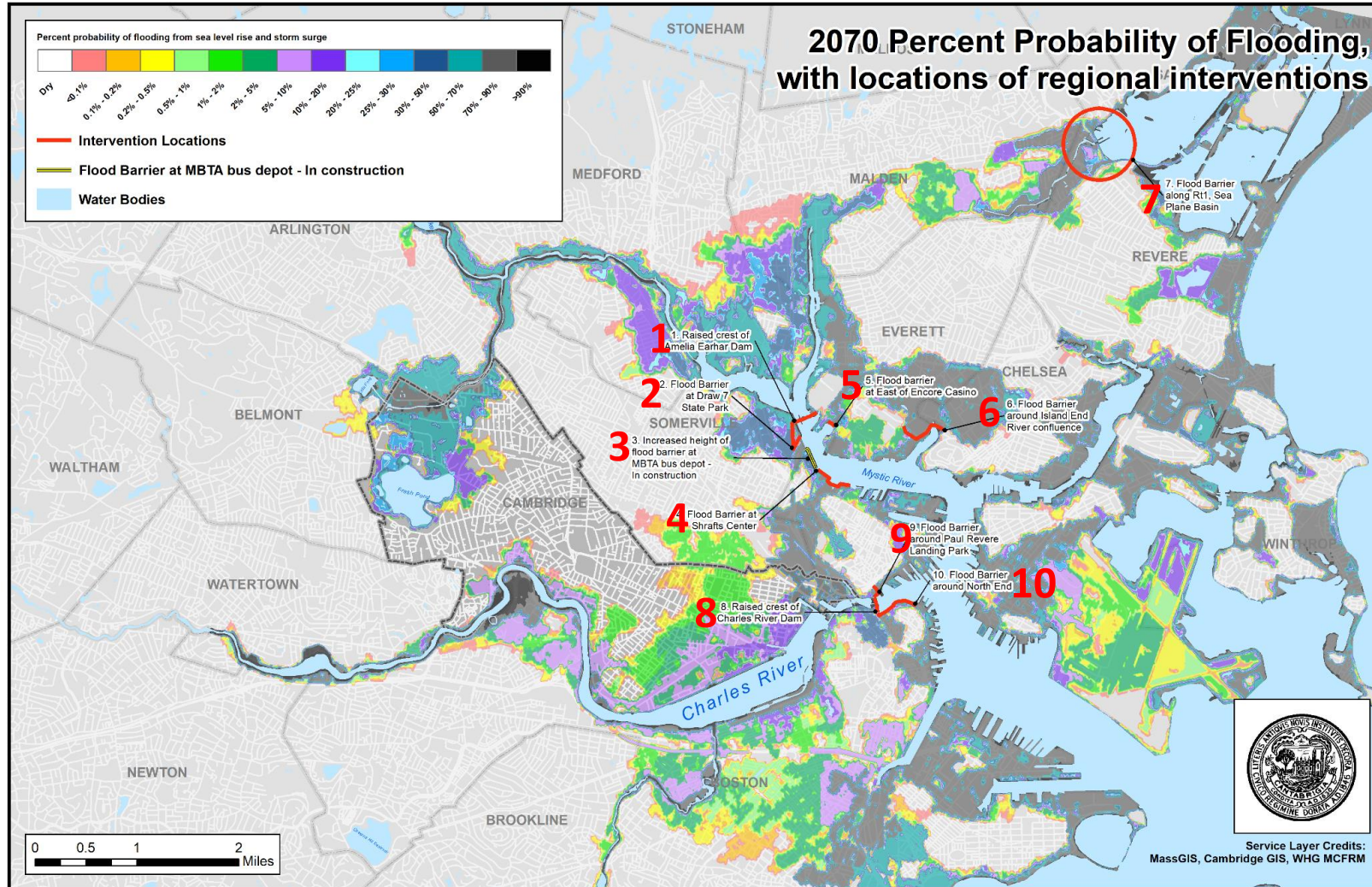
# Research question:

What will it take to maintain the dams' current level of coastal and inland flood protection fifty years from now?





# Ten coastal flood pathways



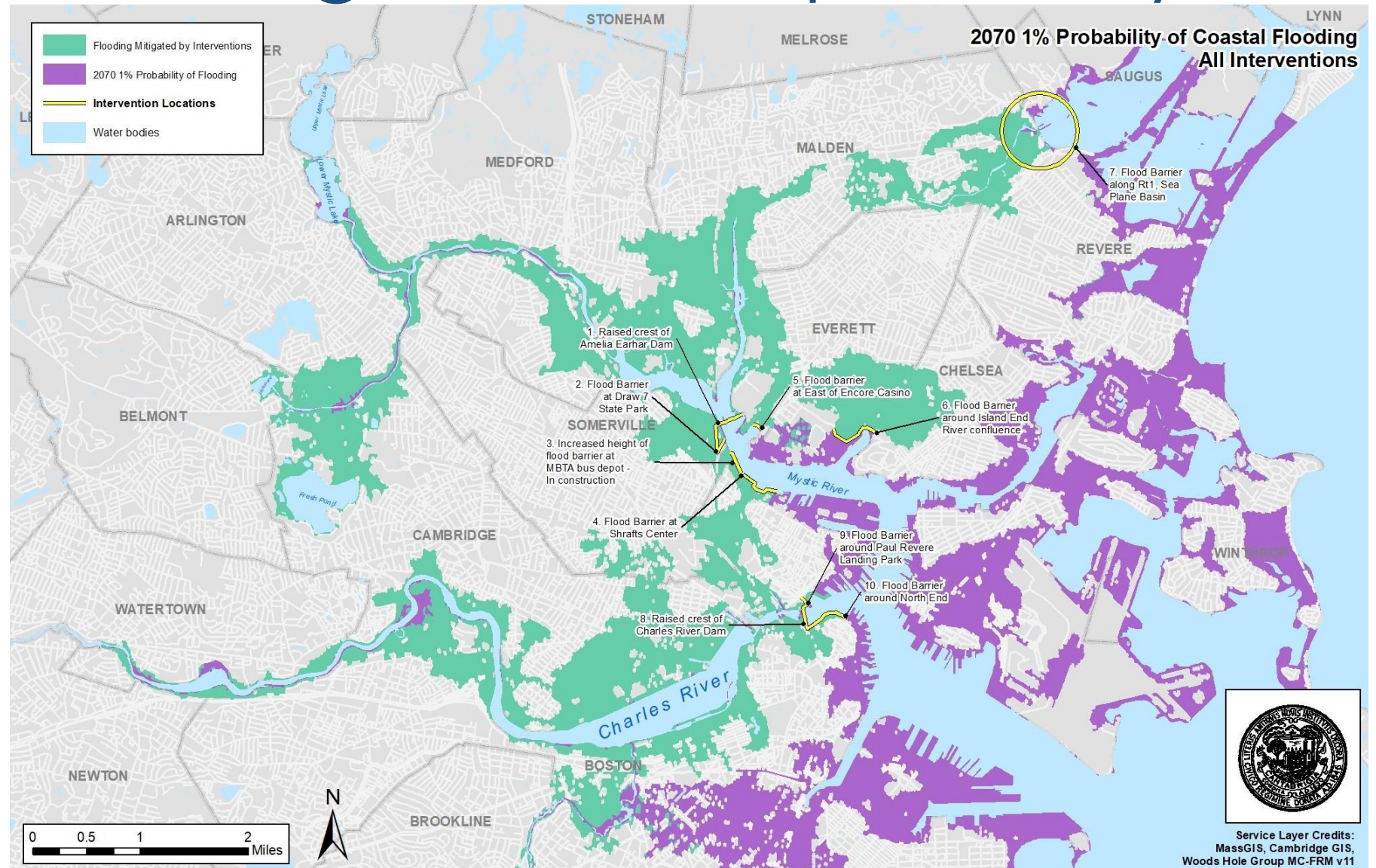
1. Amelia Earhart Dam
2. Draw 7 Park
3. MBTA Bus Depot
4. Schrafft's Center
5. East of Encore Casino
6. Island End River
7. Rt 1 Revere/Saugus
8. Charles River Dam,
9. Paul Revere Park
10. North End



# Effect of blocking ten flood pathways

For a 2070  
1% coastal storm

- Area in green is no longer flooded.
- 10 Targeted Interventions
- 12 Communities
- 108,000 Residents
- \$60B of Real Estate Value





# Resilient Mystic Collaborative

Boat Tour November 5, 2021



[About](#)

[Our Work](#)

[Climate Data](#)

**21 communities.  
One watershed.**

**We partner on climate challenges no  
single municipality can solve alone**

[Learn More](#)



# 2070 projected coastal flooding

Source: MC-FRM v11 January, 2021

