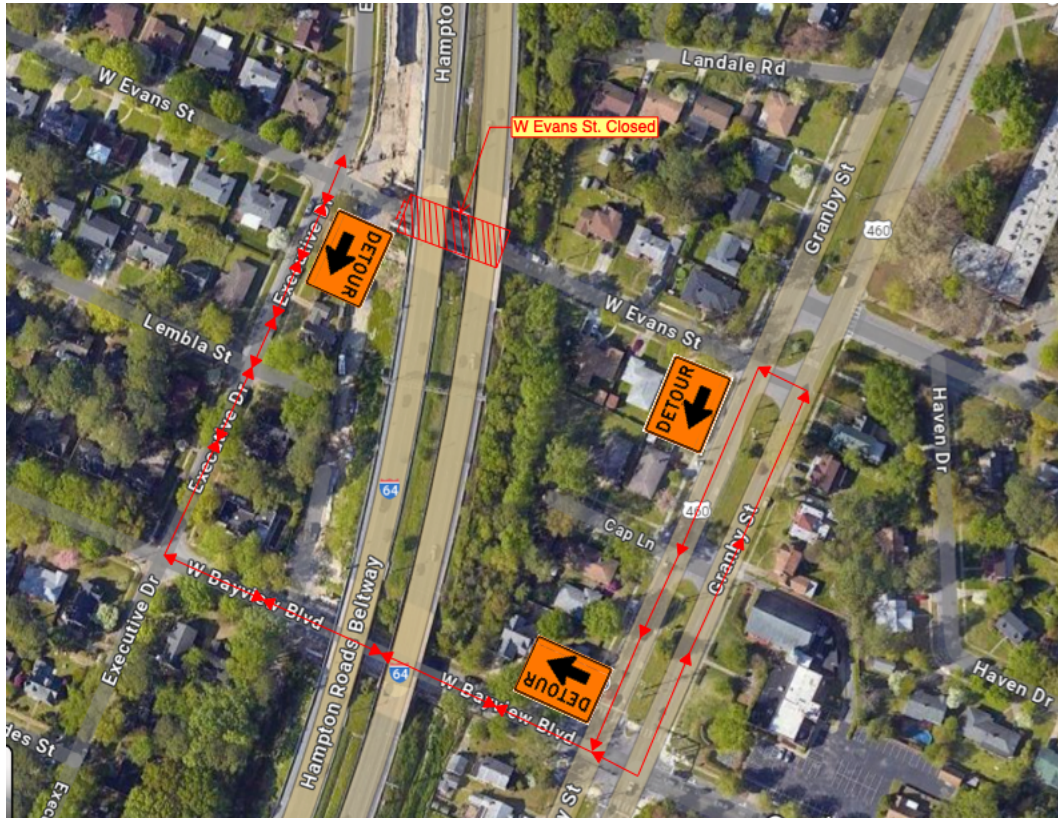




## WEST EVANS STREET DETOUR

Please follow the detour route (map below):

- Take Granby Street to W. Bayview Boulevard
- Turn onto W. Bayview Boulevard
- Turn right on Executive Drive
- Turn right on W. Evans Street.



---

All construction schedules are subject to change due to impending weather or other unexpected circumstances. Construction updates and lane closure alerts can be found at [HRBTexpansion.org](http://HRBTexpansion.org). Drivers and pedestrians are reminded to use caution when traveling near work zones. Real-time traffic, work zone and incident information are available online at [511virginia.org](http://511virginia.org), via the free mobile 511Virginia app, or by calling 511 in Virginia anywhere anytime. Follow The HRBT Expansion Project on social media @HRBTExpansion on Twitter, HRBTExpansionProject on Facebook and @HRBTExpansion on Instagram.

###