

MSSC Helps Inmates Re-enter the Workforce

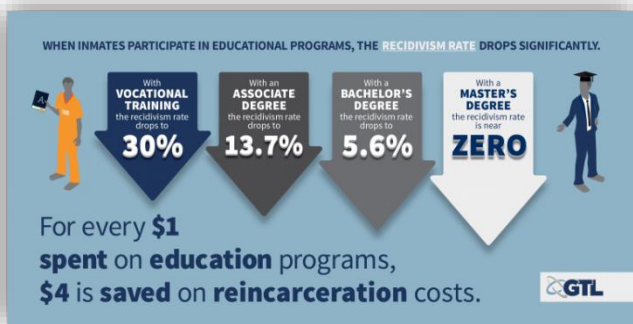
MSSC’s Certified Production Technician (CPT) and Certified Logistics Technician (CLT) programs are currently offered in four federal prisons. CPT and CLT are two of the programs available to inmates to help them acquire technical skills and certification. MSSC’s well established, rapidly growing program in this field is closely aligned with the inmate retraining goals of the new **First Step Act** strongly supported by the President and his administration.

Programs like CPT and CLT help inmates gain technical knowledge and skills as well as industry credentials to increase the likelihood of post-incarceration employment. According to the U.S. Department of Education, many offenders are ill-equipped to break the cycle of catch-and-release because they lack the education and workforce skills needed to succeed in the labor market. However, studies show that education and job skills training reduce recidivism.

“The First Step Act gives nonviolent offenders the chance to reenter society as productive, law-abiding citizens. Now, states across the country are following our lead. American is a nation that believes in redemption.”

President Trump (2.5.2019, Vox News, State of the Union Speech)

Due to restrictions on inmate access to the internet, MSSC has made accommodations to allow prisons to access the CPT Amatrof material offline. This program gives inmates the chance to utilize state of the art, interactive curriculum based on MSSC standards. MSSC also provides them with paper and pencil testing. Inmates are often required to pay for their own assessments.



Lois Davis: Rand Corporation, 2013 GTL Invests in Education, 2017

“MSSC is pleased to work with the federal prison system,” said Neil Reddy, MSSC CEO. “Industrial certifications like ours can help inmates find employment when they are released, and hopefully that will help them not return to prison.”

“Shorter term, intensive training led to better success. The instructors and students are together every day of the week. There was a 100% pass rate for every single module of the CPT. The students also earned the OSHA 10 certification.”

Paula Clark, Workforce Alignment Consultant, Ivy Tech Community College – Madison Campus / Madison Correctional Facility

MSSC Activity in Prisons

Assessment Delivery

- 10,510+ assessments delivered since February 2011
- 8,035+ credentials issued
- 76% passing rate

Authorized Assessment and Training Centers

Correctional Facilities- MSSC Assessment Centers	
Dyer County Sheriff	MCF - Willow River
FCC Florence- Federal Bureau of Prisons	MCF-Faribault Education
FCI Greenville	Minnesota Department of Corrections
FCI Seagoville	Mississippi Prison Industries Corp
Federal Bureau of Prisons- Terre Haute	Okeechobee Correctional Institution (OCI)
Federal Correctional Ins/Oxford	Oneida County Correctional Facility
Federal Correctional Ins/Pekin	Rutherford County Correctional Work Center
Hernando County Florida Jail	Shelby County Division of Corrections
Kyle Correctional Facility	Southern Maine Women’s Re-Entry Center
Lockhart Correctional Facility	USP Leavenworth
Madison Correctional Facility	USP Marion
MCF - Moose Lake	USP Tucson
MCF - Red Wing	Indiana Department of Correction
MCF - Rush City	

Schools/Organizations- MSSC Assessment Centers working with Correctional Facilities
Austin Community College – Kyle & Lockhart Correctional Facility
Grace Community Education
Oakland City University – Indiana Department of Corrections
Oakland City University-Westville – Indiana Department of Corrections
Paul D. Camp Community College – Deerfield Correctional Center
Pasco Hernando Workforce Board-Dade – Hernando County Sheriff
Pasco Hernando Workforce Board-NPR – Hernando County Sheriff
Cedar Valley College
Cincinnati State – OTDN – River City Correctional Institution
Dallas County Community College District
Hill College
Houston Community College
Jennings County Adult Education Center
Kilgore College
Madison Area Technical College-Madison
Metropolitan Community College- 180 RAP Omaha
Middlesex County College
Oakland City University-Miami – Indiana Department of Corrections
Pasco-Hernando Workforce, Inc. – Hernando County Sheriff
Pathways - VA, Inc.
Pine Technical & Community College
Polk State College
Pride Enterprises
Pueblo Community College
Purdue Manufacturing Extension Partnership
Ranger College
Richland College-Garland Campus
South Central College - Faribault Campus – Faribault Prison
Spartanburg Community College
St. Charles Community College
Tallahassee Community College
Tampa Bay Academy of Hope Incorporated
Tennessee College of Applied Technology- Jackson – Gibson County Correctional Facility
Tennessee College of Applied Technology – Paris – Henry County Sheriffs
Trident Technical College – McDougal Correctional Facility
Tyler Junior College
Washburn Institute of Technology

NOTE: MSSC is also working with UNICOR, California Prison Industry Authority (CALPIA), and the Metropolitan Training Corporation

What are Inmates Saying

“I’m a practicing electrical apprentice always eager for more education. I thought my future was set in stone as far as capabilities were concerned, it wasn’t until I signed up for the MSSC Certification Program that I realized my options aren’t limited to simply construction-based employment. I can now take the education I’ve already had and the stuff I’ve picked up from the program and apply them almost anywhere I want to look to employ me. MSSC is a great program to gain insights into education that wouldn’t normally be available to inexperienced workers looking for a job, and for that I’m thankful!”

Pekin Inmate, CPT Certificiant

Quote was provided by an inmate who earned the full-CPT certification while incarcerated. Due to federal privacy requirements for inmates, MSSC is not able to provide the name of this individual.