

# FEB

ISSUE 3

BEYOND SCIENCE  
BLACK HISTORY MONTH  
GET EDUCATED  
TAKE ACTION  
BROADER COMMUNITY

DEPARTMENT OF IMMUNOLOGY AND INFECTIOUS DISEASES  
DIVERSITY, INCLUSION, AND BELONGING COMMITTEE

# IID DIB

## BEYOND SCIENCE

HOW MIREILLE KAMARIZA  
INVENTED A TOOL TO SPEED UP THE  
RACE TO STOP TB

FORUM - THE POLITICS OF HEALTH  
POLICY: INTEGRATING RACIAL  
JUSTICE INTO HEALTH CARE AND  
CLINICAL RESEARCH

CELL ARTICLE - FUND BLACK  
SCIENTISTS



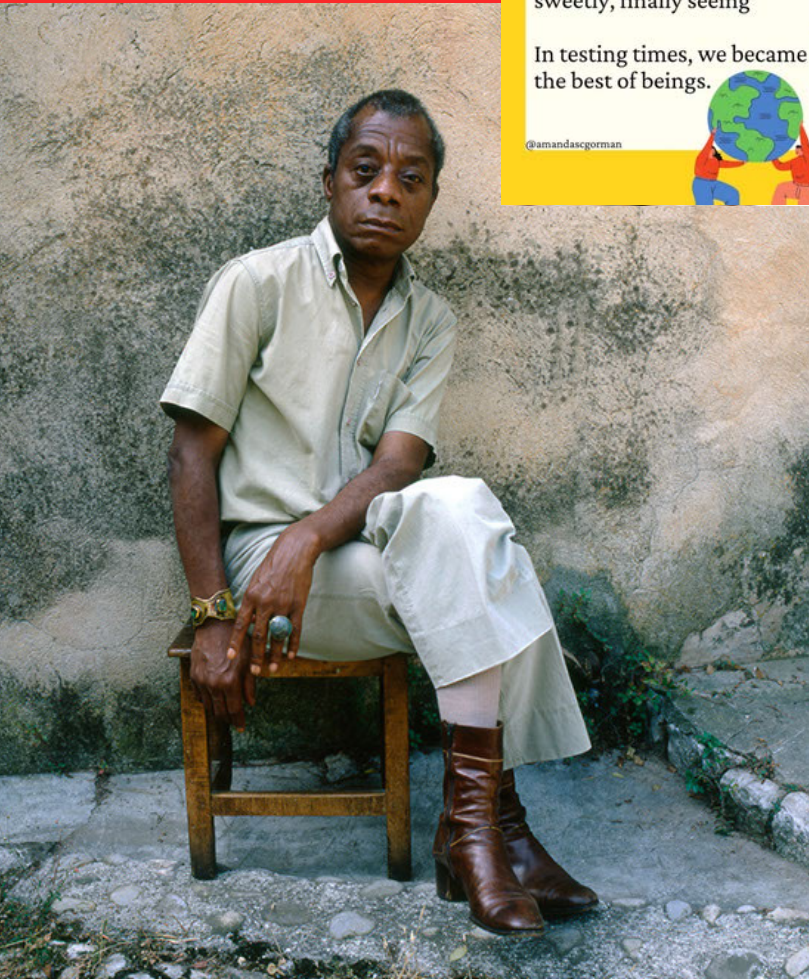
## CELEBRATE BLACK HISTORY MONTH

AMANDA GORMAN READS "THE MIRACLE OF MORNING"

CITY OF BOSTON EVENTS TO CELEBRATE  
BLACK HISTORY MONTH

SUPPORT BLACK OWNED RESTAURANTS

THE HISTORY OF STRUCTURAL RACISM IN  
CHARLOTTESVILLE: LEGALLY ENFORCED SEGREGATION  
AND ITS IMPACT ON HEALTH







## GET EDUCATED - JAMES BALDWIN

- LETTER FROM A REGION IN MY MIND,  
THE NEW YORKER, 1962
- SCENES FROM JAMES BALDWIN'S WORLD



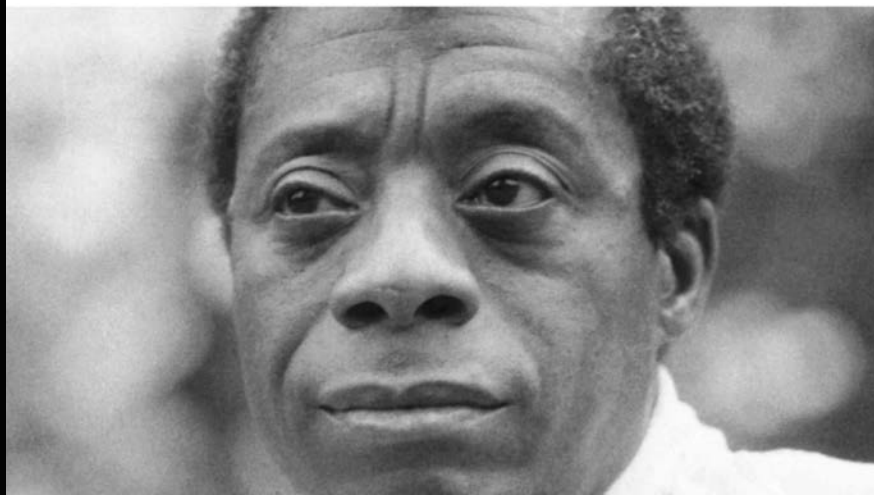
- THE WORLD ACCORDING TO JAMES BALDWIN - TED TALK

Lessons from James Baldwin on betrayal  
and hope



WE ARE READING BALDWIN'S *THE FIRE NEXT TIME*  
FOR OUR **INAUGURAL BOOK CLUB** WEDNESDAY,  
MARCH 17TH AT NOON

HOW WILL YOU APPLY WHAT YOU LEARN DURING  
THIS EXPERIENCE TO COMBATTING RACISM IN  
YOUR SCIENTIFIC OR ACADEMIC COMMUNITY?





# GET EDUCATED AND TAKE ACTION

## UNPACK "THIS LAND IS YOUR LAND"

THE INAUGURATION WAS HERALDED AS ONE OF THE MOST INCLUSIVE YET, CENTERING NOT DIVERSE POLITICAL LEADERS, BUT NODS TO VARIOUS CULTURES AND IDENTITIES. BUT INDIGENOUS COMMUNITIES WERE DISHEARTENED TO HEAR "THIS LAND IS YOUR LAND" PERFORMED DURING THE CEREMONY, A SONG THAT CELEBRATES THE LAND THIS NATION "OWNS" WITHOUT ACKNOWLEDGING HOW IT WAS ACQUIRED – BY THE GENOCIDE, OPPRESSION, AND FORCED REMOVAL OF INDIGENOUS COMMUNITIES THAT INITIALLY CALL IT HOME. AND THIS CONVERSATION ISN'T NEW; INDIGENOUS ACTIVISTS HAVE BEEN NAMING THIS FOR DECADES (LEARN MORE FROM MALI OBOMSAWIN'S COMPREHENSIVE OVERVIEW IN [FOLKLIFE](#)). [MORE..](#)

## LEARN ABOUT HARVARD AND THE LEGACY OF SLAVERY

## RACISM HAS A COST FOR EVERYONE



DIVERSITY, EQUITY, AND  
INCLUSION... OH MY!  
(FT. SHARON SMITH-  
AKINSANYA) PODCAST

# BROADER COMMUNITY

## COMMUNITY SPACES FOR AFFINITY GROUPS

Drop-in sessions for self-care  
& wellness

[REGISTER](#)

Jan 12	All Harvard (3-4pm)	Feb 23	Indigenous / Native American
Jan 12	International	Mar 2	Latinx
Jan 19	LGBTQ	Mar 9	Asian / South Asian / Middle Eastern
Feb 2	People w. disabilities	Mar 16	Allies for people w. marginalized IDs
Feb 9	BIPOC / multiracial	Mar 23	Marginalized Genders
Feb 16	Black / African American	TBA	Parents & Caregivers

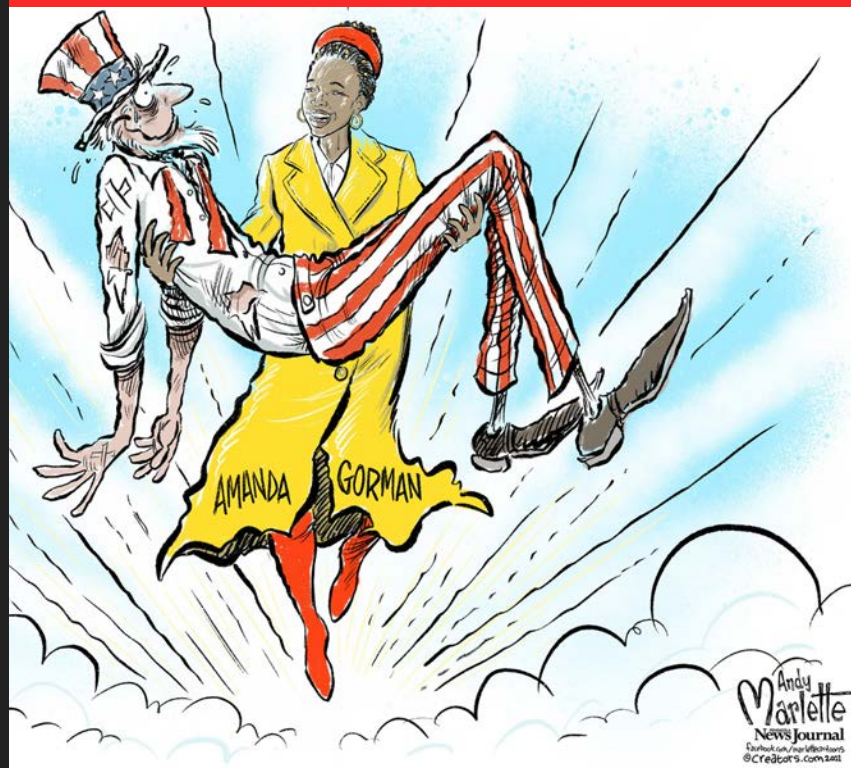
TUESDAYS 5:00-6:00 PM

People who would like to request accommodations or have questions may contact [dib@harvard.edu](mailto:dib@harvard.edu) in advance of the program.



HARVARD UNIVERSITY  
Health Services

[DIB.HARVARD.EDU](http://DIB.HARVARD.EDU)



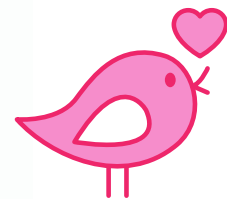
Andy  
Marlette  
News Journal  
@creators.com

**WE ARE EXCITED TO ANNOUNCE OUR NEW LOGO!**

**THANK YOU LUCIA!**



DEPARTMENT OF IMMUNOLOGY AND INFECTIOUS DISEASES  
**DIVERSITY, INCLUSION & BELONGING**



**WE WANT TO HEAR**

**FROM YOU!**

**SHARE WITH US**

**[IIDDIB@HSPH.HARVARD.EDU](mailto:IIDDIB@HSPH.HARVARD.EDU)**