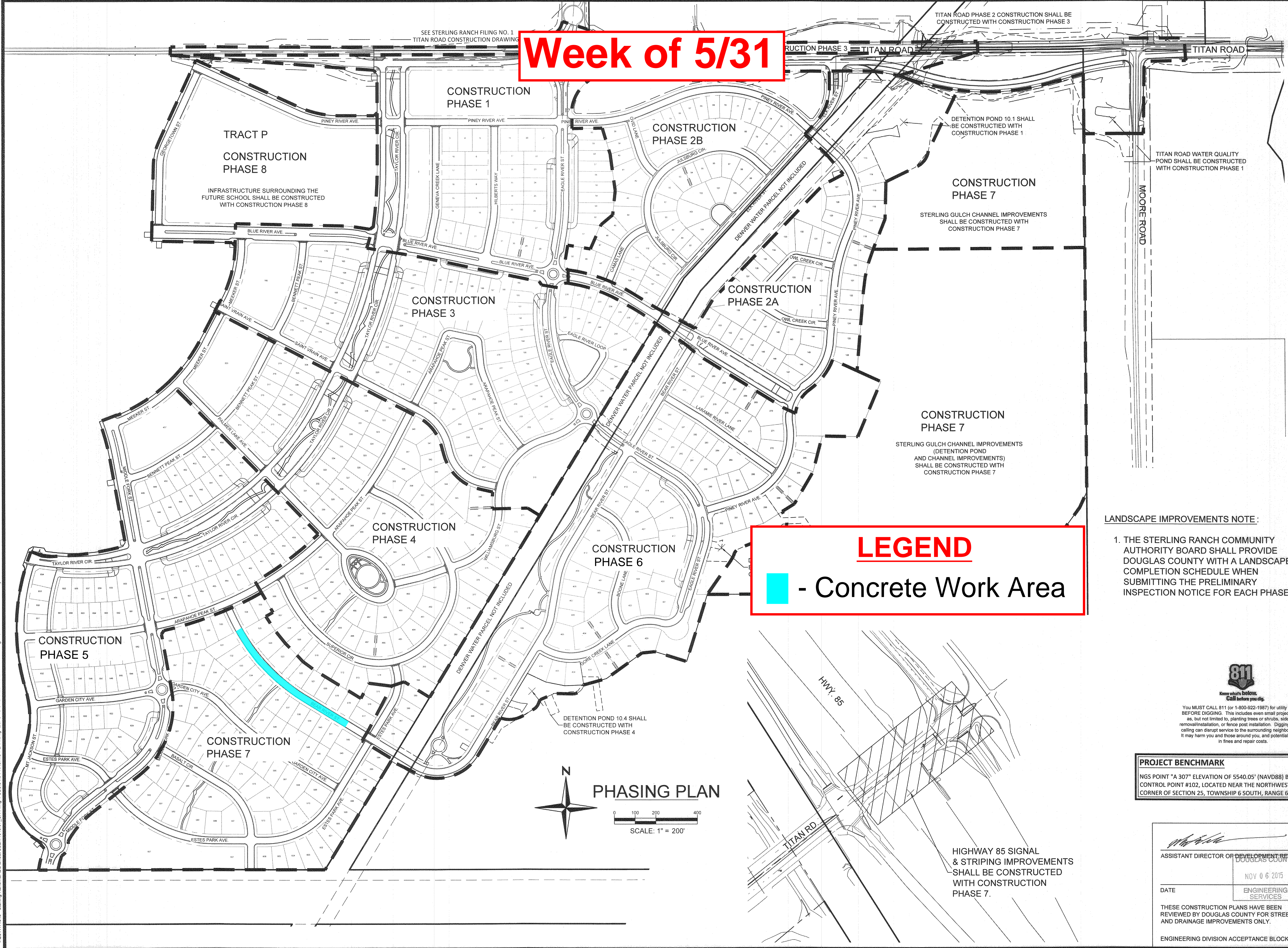


Week of 5/31




LEGEND

 - Concrete Work Area

LANDSCAPE IMPROVEMENTS NOTE:

1. THE STERLING RANCH COMMUNITY AUTHORITY BOARD SHALL PROVIDE DOUGLAS COUNTY WITH A LANDSCAPE COMPLETION SCHEDULE WHEN SUBMITTING THE PRELIMINARY INSPECTION NOTICE FOR EACH PHASE.

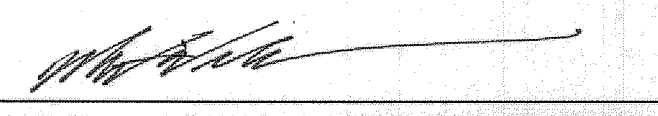


Know what's below. Call before you dig.

You MUST CALL 811 (or 1-800-922-1987) for utility locates BEFORE DIGGING. This includes even small projects such as, but not limited to, planting trees or shrubs, sidewalk removal/installation, or fence post installation. Digging without calling can disrupt service to the surrounding neighborhoods. It may harm you and those around you, and potentially result in fines and repair costs.

PROJECT BENCHMARK

NGS POINT "A 307" ELEVATION OF 5540.05' (NAVD88) BEING CONTROL POINT #102, LOCATED NEAR THE NORTHWEST CORNER OF SECTION 25, TOWNSHIP 6 SOUTH, RANGE 69 WEST.


ASSISTANT DIRECTOR OF DEVELOPMENT REVIEW
DOUGLAS COUNTY

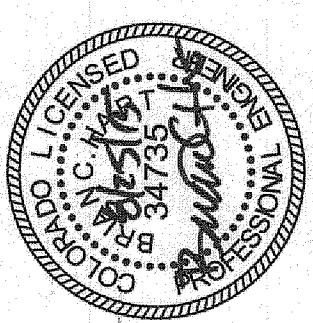
NOV 06 2015
ENGINEERING SERVICES

DATE

THESE CONSTRUCTION PLANS HAVE BEEN REVIEWED BY DOUGLAS COUNTY FOR STREET AND DRAINAGE IMPROVEMENTS ONLY.

ENGINEERING DIVISION ACCEPTANCE BLOCK

REDLAND
Where Great Places Begin
8000 South Lincoln Street, #206 | Littleton, CO 80122
Office: (720) 283-6783 | www.redland.com



PH	
DRAWN	
CHECKED	
APPROVED	BCH
PROJECT NO.	11016.07
HORIZ. SCALE	
VERT. SCALE	

DATE	NO.	FIRST SUBMITTAL	NOTES
7/18/14	1		
9/24/14	2	2ND SUBMITTAL	
10/30/14	3	3RD SUBMITTAL	
12/23/14	4	4TH SUBMITTAL	
4/30/15	5	5TH SUBMITTAL	
08/02/15	6	6TH SUBMITTAL	

STERLING RANCH FILING NO. 1

OVERALL PHASING PLAN

SHEET

C1.6