

Increase Care Staff Retention through Better Communication with Residents

by Ruth Bridger

by Alango
behear.[®]
LIFE SOUNDS BETTER

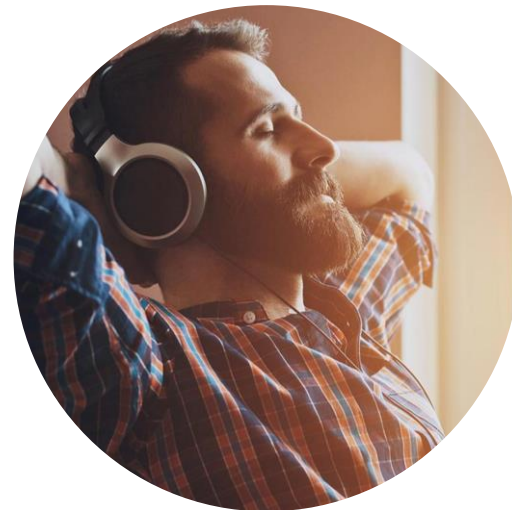


The Company

- ▶ • Established: Alango Technologies in 2002, BeHear division in 2015
- ▶ • Leading developer of DSP sound enhancement technologies for voice, audio, and hearing enhancement
- ▶ • Over 60 million products worldwide use our sound enhancement technologies
- ▶ • Headquarters and R&D: Haifa, Israel



Hearing
Enhancement



Sound
Personalization



Voice
Communication
Enhancement



Speech
Recognition
Enhancement

Inability to Communicate Leads to Stress on Both Sides

Main causes of frustration and upset:

Residents

- ▶ Age-related hearing loss
- ▶ Feelings of helplessness due to lack of independence
- ▶ Illness-induced stress which reduces cognitive ability

Staff

- ▶ Struggling to be understood
 - ▶ Necessity of repeating words
 - ▶ Speaking loudly
- ▶ Tasks take longer

Traditional Hearing Aids Are Not an Optimal Solution

for residents of nursing homes and other care facilities, as they are:

- ▶ fragile
- ▶ confusing to operate
- ▶ easily misplaced
- ▶ difficult to keep charged (especially battery-operated models)

Technology to the Rescue

New hearing enhancement products, which incorporate technologies typically found only in high-end hearing aids, address this problem.

- ▶ hearing amplification, out of the box
- ▶ body-worn, tabletop, or hand-held
- ▶ simple-to-operate
- ▶ large, tactile, colorful buttons

Example:
BeHear[®]
SMARTO



Target Audience

People with difficulty hearing who:

Require significant sound amplification

Are unable or unwilling to use hearing aids

Are limited
(by mobility, vision, dexterity, or dementia)

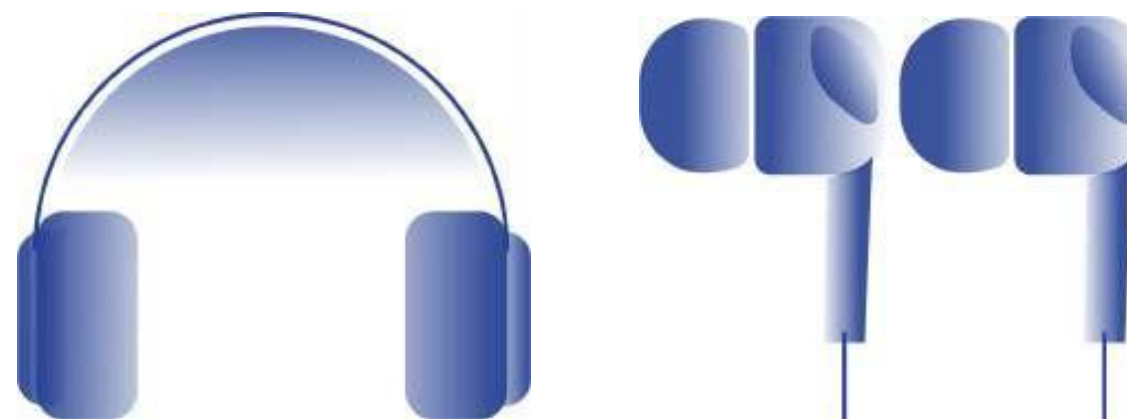


Immediate Results (short testimonial)



Simple to Operate...

- ▶ Body-worn with lanyard or clip, or hand-held
- ▶ Large, colorful buttons for easy tuning and call handling
- ▶ Rechargeable battery with charging cradle
- ▶ Two headset options: on-ear or in-ear
- ▶ Advanced functions are locked by default to simplify use
- ▶ Easily cleaned; splash water resistant



...with Sophisticated Capabilities

- ▶ Plug & Play, but programmable with a hearing test
- ▶ Directional microphones for conversation focus
- ▶ Single-press emergency call button
- ▶ Bluetooth connection for mobile calls and audio streaming
- ▶ Includes customizable tinnitus masking sound therapy
- ▶ Field-proven technology for noise reduction, including hands/clothes contact with SMARTO



Use Cases

Face-to-Face Meetups

- ▶ Noisy backgrounds
- ▶ One-on-one conversations
- ▶ Multiple participants



Use Cases

Obscured Interactions

When speaker's face is not visible:
behind a mask, back turned,
different room, etc.

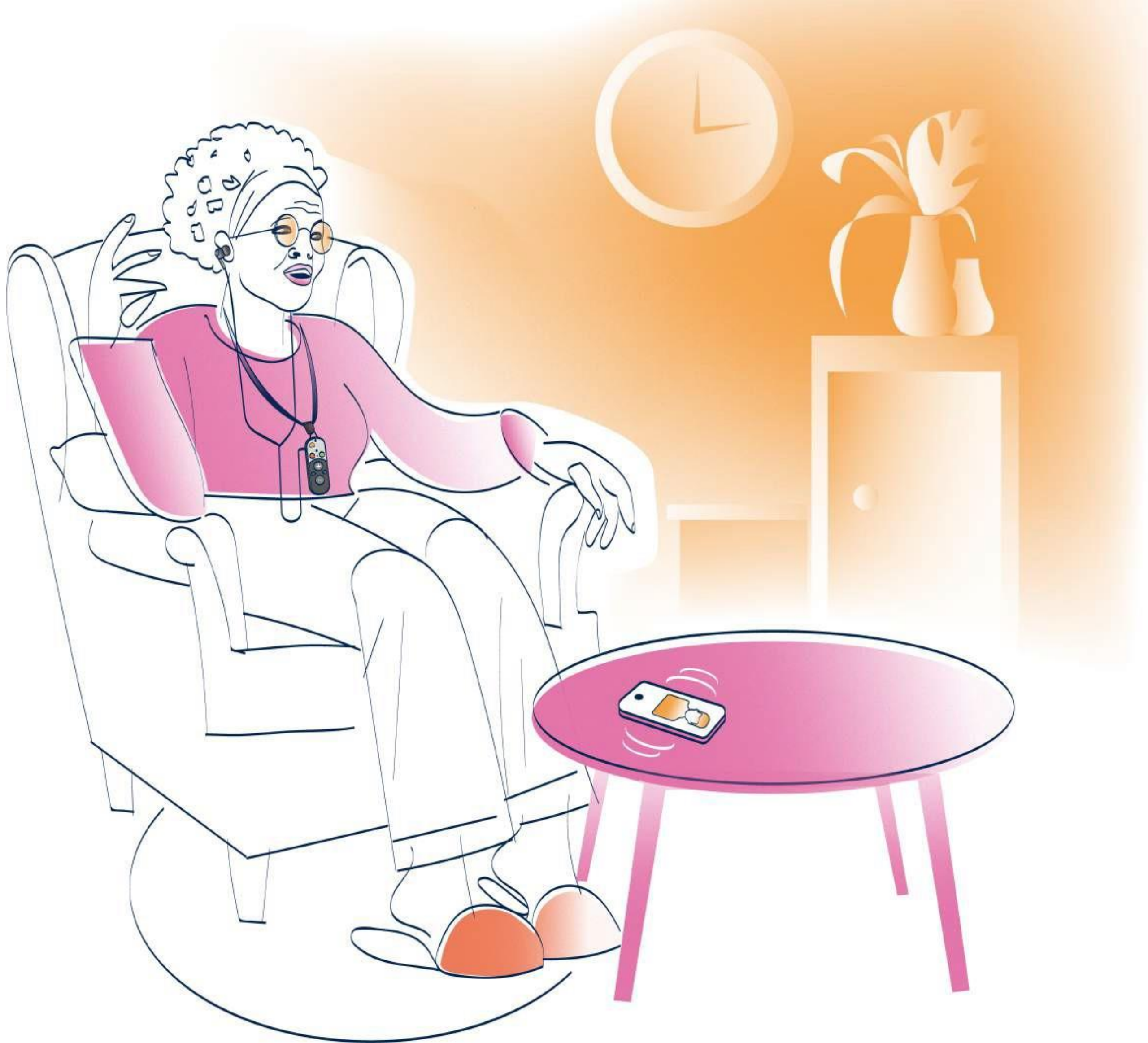


Use Cases

Streamed Audio

- ▶ TV watching
- ▶ Music
- ▶ Podcasts





Use Cases

Mobile/Video Calls

- ▶ Person-to-person
- ▶ Conference calls
(Zoom, Skype, Facetime, etc.)

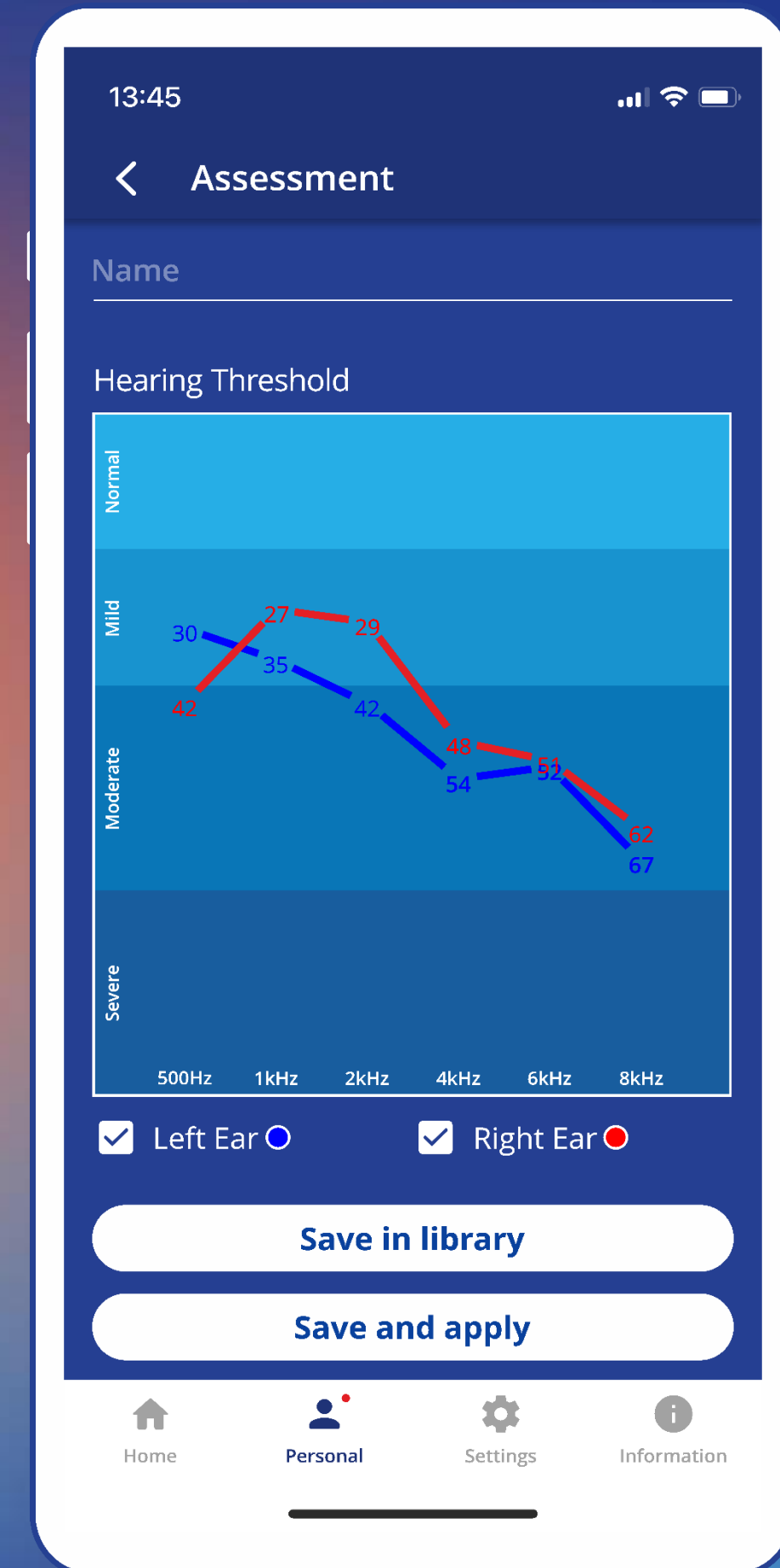
Full Customization Option

In the clinic or at home

- ▶ Download the **BeHear** app to a smartphone
- ▶ Pair it with SMARTO

Personalize SMARTO

- ▶ Input user's latest hearing test results, or
- ▶ Perform the built-in Hearing Assessment



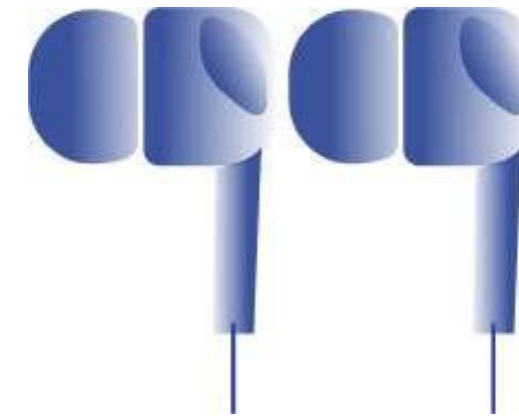
What's in the Box?



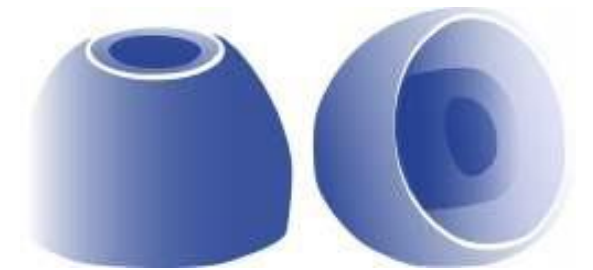
SMARTO
device



Headset
(over-ear)



Headset
(in-ear)



Earbuds
in varying sizes



Charging
cradle



USB-C charging
cable



Lanyard
(neck strap)



Questions?

Visit us in Stand E68

info@alango-behear.com

www.alango-behear.com

by Alango
behear.[®]
L I F E S O U N D S B E T T E R