

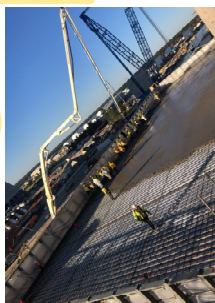
# DAILY 5

WEDNESDAY  
DECEMBER 9

Q4 Inspections = Blue

## U4 RADWASTE ROOF SLAB

Recently, Unit 4's concrete crew placed approximately 140 cubic yards for the Radwaste building roof slab. Completing this milestone created one more dry environment where personnel can work undeterred from adverse weather conditions.



The Unit 4 ironworkers, carpenters, rodbusters, and sheetmetal crews all worked professionally to prepare the building to achieve this goal. It was completed safely and on time with zero rework.

## WEAR HEARING PROTECTION

Conditions on site are changing everyday. Be aware of your surroundings and changing noises. Wear the appropriate hearing protection at all times. For example, the Unit 3 Turbine will have loud noises for the next several days due to steam introduction.

**Remember:** Exposure to high noise levels can cause temporary or permanent damage to your ears. You don't get used to the noise, you lose the ability to hear. Hearing protection is available in the tool rooms.

## DONATE A TOY TODAY!

Have you brought a toy for the 2020 Toys for Tots drive? There are only a few days left to donate to help kids in the CSRA community. Bring a toy and drop it off in a donation box in your lunch room or the connex at the main gate. Cash donations can be given to your steward.

## PROTECT YOUR EYES

Protecting your eyes using PPE is very important. During a recent audit, workers were found not wearing correct PPE. Workers who use reading or prescription glasses in the field **MUST** either attach side shields to their glasses or wear over-the-top safety glasses. Over-the-top safety glasses are available at tool cribs.

## MEDICAL FACILITIES HOURS

Core Medical Clinic building 140 (next to building 121C) is open 24/7 for injuries that happen on site.

The on site Medical Clinic in the craft parking lot is open Monday through Saturday from 5:30 a.m. to 6:30 p.m. for those who are experiencing flu-like symptoms or need a COVID-19 test.

## COVID-19 CORNER BE SMART, STAY APART

**Take a minute to check social distancing with your team. Start by stretching your arms out by your sides. Make sure you cannot touch any of your neighbors side- to-side, or in front or behind you.**

Make sure you practice social distancing in the lunch rooms, smoke pits, and while walking to and from the turnstiles. This includes six feet of distance next to you, as well as in front of and behind you.

## TESTED OFF SITE?

If you are tested off site because you feel sick or you have a positive test you need to report it to the flu hotline at (706) 437-7600 **immediately**.

# FYI FOR FOREMEN

## New Power Through It video

Watch for the new Power Through It video on iPads and lunch room TVs today!



## Got a scratch off card?

Do you have a scratch off to redeem? Visit Mala or Melissa in building 191 on **Tuesdays, Wednesdays, and Thursdays from 3 to 5 p.m. ONLY.**

## Shaping Behaviors for Zero Incidents

The ES&H Safety Leadership Workshop will be conducted for night shift today, December 9, from 6 p.m. to 1:30 a.m. **This will be located in building 199A.**

Class size is limited to 10 participants. Book attendance through your training coordinators.

## Lessons Learned

See page two for a Lessons Learned.

## RADIOGRAPHY AREAS

Watch for magenta/yellow warning tape:

- **0200-0500:** NI4 North Aux 12404/12406 (Thursday)

## CONSTRUCTION TESTING

- TBD

## PROJECT SAFETY STATS AS OF 12/07 (11/25-12/3)

TIME	FIRST AIDS	OSHA RECORDABLE	LOST TIME / LIFE ALT.	NEAR MISS	ENVIRON.	PROP. DAMAGE	UTILITY/ SERVICE INTERR.
LAST WEEK	20	2	0	3	0	2	0
THIS MONTH	10	0	0	2	0	0	0
YEAR TO DATE	1261	53	2	300	47	216	1



# Construction Lessons Learned Process

"Lesson Learned – is knowledge or understanding gained by experience to not repeat incident or accident, to mitigate risk"

Instructions: REVIEW ONLY. NO FEEDBACK FORM REQUIRED.

## INCIDENT DATA

LESSON LEARNED NO.:	DATE OF ISSUE:	INCIDENT TYPE:	SEVERITY RANKING:
LL-VOG-161	12/09/2020	Significant Near Miss	06 + 30 = 36
SHORT DESCRIPTION:	LOCATION:	SHIFT:	DATE OF INCIDENT:
Arrested fall from Elevation	Unit 4 N Aux Bldg. rm 12504	Night <input type="checkbox"/> Day <input checked="" type="checkbox"/>	11/06/2020

## INCIDENT DESCRIPTION

On Friday, 06-Nov-20 at approximately 1240 hours, an RCC ironworker foreman was traversing south across the top of the steel floor beams in Room 12504 enroute to inspect an assigned employees' work when he encountered another employee traversing the steel in the opposite direction. In order to allow the other employee to pass, the foreman switched from his personal lanyard to a nearby Self-Retracting Lanyard (SRL) anchored to the scaffold rail and stepped onto an unsecured 10-foot aluminum plank lying parallel to beam. As the unsecured plank began to tilt downward into the room below, the ironworker lost his footing and began to fall through the 6x4-foot gap between the wall and the structural steel beams. At approximately 10-feet of extension, the SRL's brake engaged and arrested the fall foreman between the wall and check valve in the below room. The foreman was not injured and performed self rescue by climbing up a scaffold leg to get back on the beam.

## APPARENT CAUSE/CONTRIBUTING (HU) BEHAVIORS

- **Change in Conditions:** Several of the aluminum planks used in the room had been removed the previous shift.
- **Hazard Not Recognized:** Failure to recognize the aluminum plank was not secured.
- **Poor Work Front Access:** Access to work front was less than adequate.
- **Incorrect Use of Equipment/Operation:** Incorrectly positioned and indeterminate functionality of the SRL.

## CORRECTIVE ACTIONS

- Ironworkers and carpenters stood down to address working/walking surfaces, changing conditions, hierarchy of risk controls
- A scaffold was erected for accessing the work front
- Update ironworker JHA to address SRL positioning, walking/working surfaces, and eliminating fall hazards
- Carpenter JHA updated to address SRL positioning and process for using aluminum deck planks
- Engage with SALA for an evaluation of the functionality of the SRL

## KEY LESSONS LEARNED

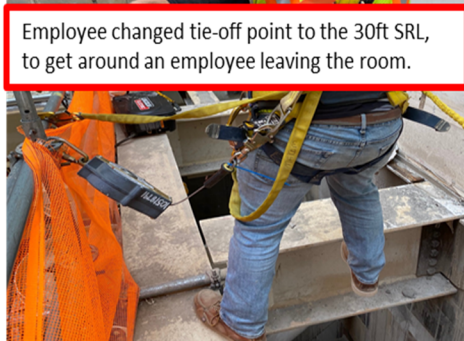
- When planning work, ensure there is proper access to the work front
- Fall protection saves lives
- Follow the STARRT Card process

## PHOTOS

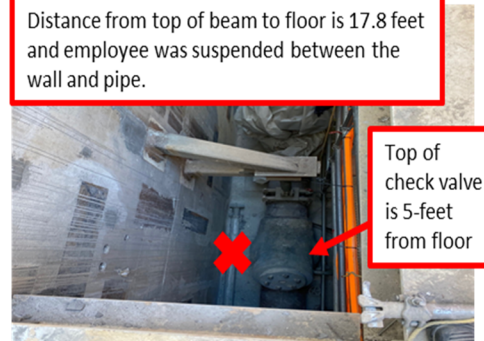
Position of the unsecured plank as foreman stepped onto the end



Employee changed tie-off point to the 30ft SRL, to get around an employee leaving the room.



Distance from top of beam to floor is 17.8 feet and employee was suspended between the wall and pipe.



Top of check valve is 5-feet from floor