

Toolbox Talks

Weekly supervisor package to share with your teams

Q2 Inspections = Green

Talking Points for the Week of June 1, 2020

#KNOWTHEPLAN

TIPS FOR SAFETY SUCCESS

ES&H Execution Plan— Housekeeping

All site personnel are responsible for good housekeeping. Demonstrate your commitment by ensuring your crews practice good housekeeping every day.

To ensure work areas are kept clean:

- **Avoid debris and rubbish build-up.** Construction sites are hazardous. Slips, trips, and fall incidents are often a direct result of poor housekeeping. Keep walkways clear of tripping hazards.
- **Discuss housekeeping during pre-job and STARRT briefings.** Consider if tasks will generate bulk combustible materials and how to prevent fires.
- **Assign adequate time so good housekeeping can be maintained.** This may be carried out by workers in the offices or workshops on site, by a cleaning contractor, or at the discretion of management.
- **Correct poor housekeeping** that could result in the creation of a tripping, slipping, fire hazard, or loss.
- **Run electrical cords overhead whenever possible.** Cords can be secured to structural steel but not to snubbers, spring cans, or struts. When cords cannot be run overhead, secure and cover them on the floor to prevent movement. Make sure routed cords cannot be damaged by traffic in the building. For example, do not lay directly over grating. Never use duct tape to secure cords.
- **Secure gas cylinders at all times.** They must be capped when not in use.

INCIDENT REVIEW BOARD

Each week, leadership reviews recent incidents and corrective actions taken. Here is feedback and direction based on the incident reviewed last week.

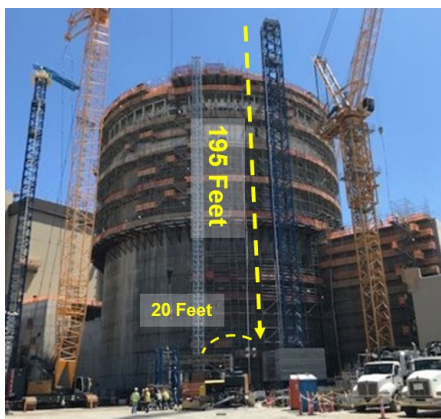
Dropped concrete pipe

Workers removed connection pins for the rigged S25 tower section. They were in the process of getting separation with pry bars to hoist the tower section off and to the ground when the S25 tower section became separated from the transition section. At that time, a six-foot section of concrete pipe fell away from the tower and dropped approximately 195 feet, striking the tower's counterweight.

Upon contact with the counterweight, the pipe separated at the clamp and the two three-foot sections bounced out of the danger barricade falling another 20 feet to the ground.

Lessons Learned:

- Critical multi-functional and cross-discipline activities will be identified and JHAs developed and prepared based on planning and input from responsible superintendents.
- Use the ES&H 90-day look ahead tool to identify upcoming high-risk work activities to ensure superintendents and general foremen are in the field when undertaking high risk activities.



SAFETY

Heat acclimation and proper dress



New workers and people who have been absent for extended time off should acclimate their bodies to the heat. It's important to remember that you **cannot acclimate your body to need less fluids.** Even

after you become acclimated, your body still needs adequate water. Depending on the Heat Index reading, you may need at least eight ounces of water every 10 to 30 minutes while working.

Wearing light-colored, loose-fitting, light-weight clothing is the key to staying cool. Cotton is also a good fabric because it allows your skin to breath and absorbs sweat better.

2020 Key Results

Safety

GOAL: Zero life-altering injuries

2020 Life-altering injuries: 0 2020 TRIR: 0.37
2020 Recordable Incidents: 19 In May: 2

Production

	5/24 A
U3	93.7%
U4	70.1%
BOP	83.8%
TTL	83.2%

Cost Performance Index (CPI)

GOAL: <1.10 CPI

Period ending 5/24: 1.49 Cumulative: 1.28

Talking Points, continued

You report it, we sort it

No matter how minor, anything that happens unexpectedly or unintentionally, needs to be reported ASAP.

This includes:

- All injuries.
- All vehicle and equipment accidents.
- All property damage.
- All near miss incidents.
- All crane and rigging incidents including damaged rigging components.

Immediate reporting helps us complete a good investigation, correct unsafe conditions, and stop re-occurrence.

Hazard and RE-STARRT cards

Hazard and Re-STARRT cards are available to use in the field. Fill out these cards for hazards that workers or teams cannot fix or mitigate themselves. Use the card to document an issue, drop it in a PBS box, and the ES&H team will follow up.

These cards are located in a variety of places, including tool cribs, break rooms, the document control center, and all PBS dropboxes. One side of the card is to identify hazards and the other side of the card is to recognize a stop work condition or an at-risk behavior is identified.

Remember to only fill out one side of the card at a time!



ENVIRONMENTAL

Wildlife awareness

Remember these things when it comes to wildlife on site:



- **Do not handle or attempt to remove** wildlife, including dead or injured animals. Leave the animal alone and contact Bechtel Environmental immediately.
- **Never dispose** of an animal carcass in any trash can, dumpster, roll off, or other debris container unless directed by Bechtel Environmental.
- **Keep work areas clean and free of food waste.** Do not feed wildlife (including cats) and keep trash cans covered.
- **Perform equipment inspections and area walkdowns daily** to prevent nesting activities. Watch for birds carrying nesting materials. Cover equipment/materials not in use. A nest that does not contain eggs or hatchlings is deemed “inactive” and may be removed.
- During warm weather, more snake encounters are possible. Please do not attempt to provoke, catch, redirect, or handle any snake.

Contact Bechtel Environmental with any questions or concerns.

This week's nuclear safety behavior

Follow the rules

We perform pre-job briefs to identify unexpected conditions that could impact quality or hinder our ability to perform work. Pre-job briefings reduce the likelihood of errors when we:

- Review instructions to validate that they are correct before work begins.
- Understand expectations and demonstrate behaviors to ensure construction quality.
- Ensure personnel qualifications are satisfied to perform the specific task.
- Consider the consequences of incorrect actions before carrying out critical steps.
- Are willing to stop and get help if we don't see what we expect.

The completion of high quality work and safe operation of the new plants depends on each of us following all rules that are important for nuclear safety.

Dropped objects (May 22—May 28)

By POTENTIAL severity ranking

0	Could have resulted in death
0	Could have been lost-time incident
0	Could have been recordable incident
1	Could have been first aid

COVID-19 Reminder

On site medical clinic

The on site medical clinic in the main craft parking lot is staffed with medical professionals for Vogtle 3 & 4 team members. The clinic can administer tests for illnesses such as flu, strep, and COVID-19, if necessary. Other benefits of the clinic include:

- Open Monday-Saturday, 6 a.m. to 6 p.m.
- Free testing, no copays, and access to dedicated medical professionals.
- 24-48 hour turnaround on test results.
- Follow-ups with medical professionals about medical advice, self-isolation guidance, and other answers to questions.
- If you have questions about flu-like symptoms, call (706) 437-7600.

Remember, if you get tested for COVID-19 offsite, you must contact the Flu Hotline at (706) 437-7600 the SAME DAY testing is performed.



People-Based Safety—Weekly Update

PBS UPDATE

This week PBS will continue holding mini-sessions. The mini-sessions will practice social distancing by having no more than six members attend during a designated time slot within their regularly scheduled meeting time. Volunteer PBS members must contact a dedicated PBS member to find out their time slot.

Observed this week

1,192

Craft observed out of

3,256

Observable craft

Behavior	% Safe
Body Mechanics	97.9%
PPE	96.6%
Job Factors	95.3%
Job Planning	97.3%
Housekeeping	98.0%
Vehicles	96.1%

487 PBS observation cards completed last week

PBS drop-off box locations

PBS team members are reminded to put their observations in one of the 10 PBS drop-off box locations:

- Building 142 (1)
- Building 130 (2)
- TI-4 lunch tent (1)
- NI-4 lunch tent (1)
- Annex 4 lunch tent (1)
- Building 307 (2)
- Building 171 (2)

Safe behaviors from last week



Chemical storage

A team member was observed placing flammable chemicals in an appropriate storage cabinet.

Discussion: The observer thanked the individual for controlling hazardous substances properly.

Other safe behaviors from the week:

- Spotter activities are improving.
- Riggers are using the buddy system more.
- Welder's helpers are using the same-level PPE as welder.
- Communication between crews working in adjacent areas is improving.
- Fire extinguisher inspections are improving.
- Combustibles are being controlled effectively.

At-risk behaviors from last week



Scaffolds

Team members were observed passing material across a scaffold without checking the tag.

Discussion: The observer coached the individuals, pointing out the potential hazards and Life Critical violation of accessing an uninspected scaffold.

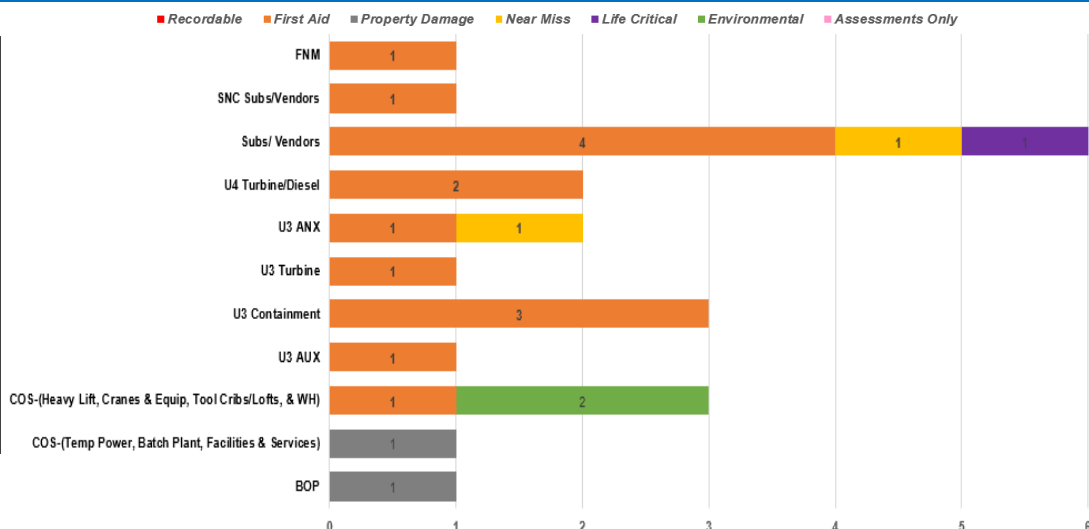
Other at-risk behaviors from the week:

- Teammates are wearing ballcaps under hard hats.
- Teammates are walking and talking, not keeping their eyes on path.
- Clutter in laydown areas.
- Teammates stepping over/ducking under green barricades.
- Hearing protection use is decreasing.
- Social distancing practices need improvement.

Safety incidents from last week

Congrats to the following teams for having ZERO incidents this week:

- U3 Indirects– 10 weeks in a row
- U3 Radwaste– 2 weeks in a row
- U3 Shield/Diesel
- U4 Aux
- U4 Containment
- U4 Shield– 5 weeks in a row
- U4 Aux/Radwaste– 5 weeks in a row
- U4 Indirects– 2 weeks in a row
- COS– NOI6 & NOI7 Fab Shops, MAB – 4 weeks in a row
- SNC Subs/Vendors



Date	Location	Area	Incident Description	Craft Code	Shift
(0) Recordable					
(15)-First Aid					
5/28/2020	U4 Containment-100' Elev.	Subs/Vendors	Finger injury-caught in between scaffold bar and gang box	Williams Painter	Day
5/28/2020	Room 40601	U3 Annex	Knee strain-stepped down from scaffold pole and twisted knee	Scaffold carpenter	Day
5/27/2020	400 Deck	U3 Containment	Shoulder strain-lifting material ~50 lbs.	Electrician	Day
5/27/2020	U3 Annex-135' EL	Subs/Vendors	Back strain-moving material	API insulator	Day
5/27/2020	SW Corner of Unit 3	COS (Heavy Lift, Cranes & Equipment, Tool Cribs/Lofts, WHs)	Hand contusion-same level fall	Operator	Day
5/26/2020	NOI7	SNC Subs/Vendors	Back strain-picking up 2" conduit	WPS-Electrician	Day
5/26/2020	500 Deck	U3 Containment	Back strain-performing housekeeping duties	Electrician	Day
5/26/2020	Room 11500-Area 2	U3 Containment	Back strain-inspecting scaffolding in congested area	Scaffold carpenter	Night
5/26/2020	NI4 Tool Room	U4 Turbine Bldg/Diesel	Ankle sprain-rolled ankle while walking from tool room	Pipefitter	Day
5/24/2020	66.6 EL	U3 Auxiliary	Forearm abrasion-struck against a light fixture	Electrician	Day
5/22/2020	U3 Auxiliary-Room	FNM	Eye irritation-inspecting cable terminations	FNM	Day
5/22/2020	196' EL	U4 Turbine Bldg/Diesel	Elbow Abrasion/Contusion-struck against a piece of pipe	Pipefitter	Night
5/22/2020	Near Bldg. 307	U3 Turbine	Shoulder strain-opening door to port-a-john	Electrician	Day
5/22/2020	Rm 11500-U3 CNTMT	Subs/Vendors	Foreign body to left eye-removing PPE	Williams Painter	Day
5/22/2020	Area 2	Subs/Vendors	Foot strain-stepping out of AWP	CSM ironworker	Day
(2)-Property Damage					
5/27/2020	130 West Parking Area	COS (Temp Power, Batch Plant, Facilities & Services)	F -150 Truck struck jersey barrier and damage fender/bumper of truck	Laborer	Night
5/22/2020	Unit 3 Ramp	Balance of Plant	Employee cut conduit with a Sawzall and contacted a 24 volt non-energized signal cable, causing minor damage-no injuries.	Electrician	Day
(2)-Near Miss					
5/22/2020	Room 11400 to 11500 of U3 Containment	Subs/Vendors	Air line hose was uncontrolled-no injuries occurred	Williams Painter	Day
5/22/2020	135' EL-Area 3	U3 Annex/Radwaste	Dropped 15 oz. chipping hammer fell ~ 35 ft. No injuries or damages occurred	Unknown	Day
(2)-Environmental					
5/26/2020	Unit 3 CFS Building	COS (Heavy Lift, Cranes & Equipment, Tool Cribs/Lofts, WHs)	~3 gallons of hydraulic oil was release to soil	Not Applicable	Day
5/22/2020	South of 307 Bldg.	COS (Heavy Lift, Cranes & Equipment, Tool Cribs/Lofts, WHs)	~5 gallons of hydraulic oil was released to soil	Not Applicable	Day
(1)-Life Critical Violation					
5/20/2020	U3 Annex	Subs/Vendors	An API Insulator was observed accessing a yellow tagged scaffold without wearing a fall protection harness and therefore not being tied off as per procedure for a yellow tagged scaffold.	API Insulator	Day
(0)-Assessments					