

Traffic Guidelines for the 2021-2022 School Year

Families with children only in grades K-6 will use the Lower School Lot.

Families with children in grades 7-12, and any lower school siblings, will use the Upper School Lot.

Notice that the left turn lanes into the school will be closed on Jones Maltzberger during pick up and drop off. This is necessary to keep traffic flowing on Jones Maltzberger. Please use the Church Parking lot across from Driscoll Middle School to turn around if you are entering from Autry Pond Rd (see map below).

Follow your wave times: Please do not arrive before your wave time. The wave times are our best option to prevent vehicles from spilling out of our parking lot back onto Jones Maltzberger. **The wave timing is designed to decrease your wait time.** Students who have a later wave time will not be idle, but be using this time to read quietly and work on homework with a teacher present. **GHNO now has over 1500 students. Each vehicle that arrives before the assigned wave time will add an unnecessary amount of vehicles to the parking lot and therefore hold up traffic.** Wave times work best when everyone in our community abides by them. **If you are not at your appropriate wave time you may be asked to requeue in line or park.** If you are coming directly from home or work, you should not be turning onto Jones Maltzberger prior to your wave time. If you need a place to queue up prior to your wave time you may use the church parking lot across from Driscoll Middle School.

Placards: Each student will be issued a car placard with a Curb Smart Number. Each family is issued one number. Please display the placard on the dashboard in an area which is easily viewable from outside the vehicle. The placard system will help traffic captains identify cars and students who need to be called over the radio and who have not arrived at the lot at the appropriate time. This will also allow traffic captains and those entering names into the CURB Smart system to know which families have siblings or are in carpools. Contact: info@GreatHeartsNorthernOaks.org to request replacements.

Remain inside – and do not leave – your vehicle unattended during pick up and drop off. Follow the traffic attendants and officers' directions at all times.

Notice: The city has mandated that officers issue tickets to any vehicle that is on Jones Maltzberger, that is stopped or standing and has opportunity to continue moving forward in any traffic lane. Vehicles that are parked or stopped off of the roadway, including the gravel portions, will also be ticketed. In the state of Texas, cell phones are not to be used while operating a motor vehicle, this includes inside the school lots. U-turns on Jones Maltzberger are dangerous and illegal.

Drop Off

Drop off will run from 7:15-7:50AM in Lower School lot, and 7:20-7:45AM in the Upper School Lot. **At the Lower School, please do not arrive or queue in the lot before 7:10AM** so that faculty may enter the lot unrestricted. **At the Upper School, you may begin to queue in the lot at 7:10AM** and students may begin to leave vehicles at 7:20AM. Both schools will begin promptly at 7:50AM, with a morning tardy bell beginning at 7:50AM. **Students not in their classrooms for attendance when the bell rings will be considered tardy. Families arriving after 7:50AM will need to park in the Lower School Lot and sign in their children at the front desk.**

Lower School	Wave Start Time	Student Priority
First Wave	7:15AM	Working Parents, intervention and tutoring assigned by teacher
Second Wave	7:25AM	General student body

Upper School	Wave Start Time	Student Priority
First Wave	7:20AM	Working Parents, student drivers
Second Wave	7:25AM	General student body

Pick Up

The Curb Smart App will facilitate our pick up process. It is imperative for Parents to create an account, download the app on their web browser or phone and continuously update their account throughout the year. **Directions on how to create and update your Curb Smart account are found on the school webpage.**

Pick up will run from 3:25PM – 4:10PM in each lot (1:25PM – 2:10PM on early release days). Please **do not arrive or queue in the lot before 3:15PM** (1:15PM on early release days) so that early athletic release may enter the lot unrestricted in the upper lot and appointment pick up and volunteers are unrestricted in the lower lot.

Lower School	Wave Time	Early Release Time	Grades
First Wave	3:25PM	1:25PM	Kindergarten Only
Second Wave	3:35PM	1:35PM	1 st – 2 nd Grade (and any younger siblings)
Third Wave	3:45PM	1:45PM	3 rd – 4 th Grade (and any younger siblings)
Fourth Wave	3:55PM	1:55PM	5 th – 6 th Grade (and any younger siblings)

Upper School	Wave Time	Early Release Time	Grades
First Wave	3:25PM	1:25PM	10 th – 12 th Grade Only and student drivers
Second Wave	3:35PM	1:35PM	7 th – 12 th Grade Only (no lower school siblings)
Third Wave	3:45PM	1:45PM	7 th – 12 th Grade (with K – 2 nd school siblings)
Fourth Wave	3:55PM	1:55PM	7 th – 12 th Grade (with 3 rd – 6 th school siblings)

All students **MUST** be picked up by 4:10PM (2:10 on early release days) unless they are enrolled in an after-school activity (please be aware clubs and many athletics will not begin until September). **After 4:10PM (2:10PM on early release days), students will be monitored by Athenaeum/Homework Club and a charge of \$1 per minute will be incurred. Parents arriving after 4:10PM (2:10PM early release) will need to park in the Lower School Lot and sign their child out at the front desk.**

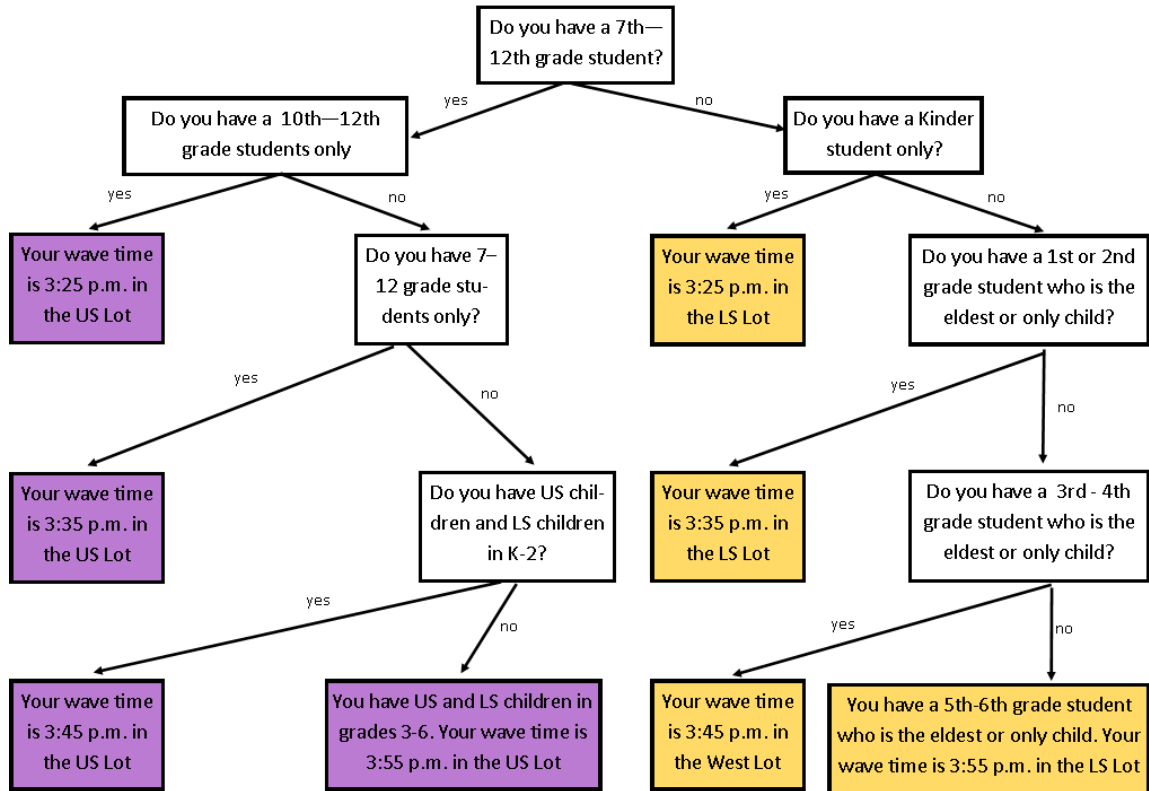
A grace period will be extended for morning tardiness and for the pickup cut off time for the first two weeks of the school year to give families and faculty time to become familiar with the new routines.

More information will be forthcoming and available at Back to School/Meet the Teacher Night. Please email Jonathan.Maiorano@greatheartsnorthernnoaks.org for Lower School and Robert.Funes@greatheartsnorthernnoaks.org for Upper School with any questions and feedback that you may have.

Please see the Wave Time Logic Tree and Traffic Flow maps below:

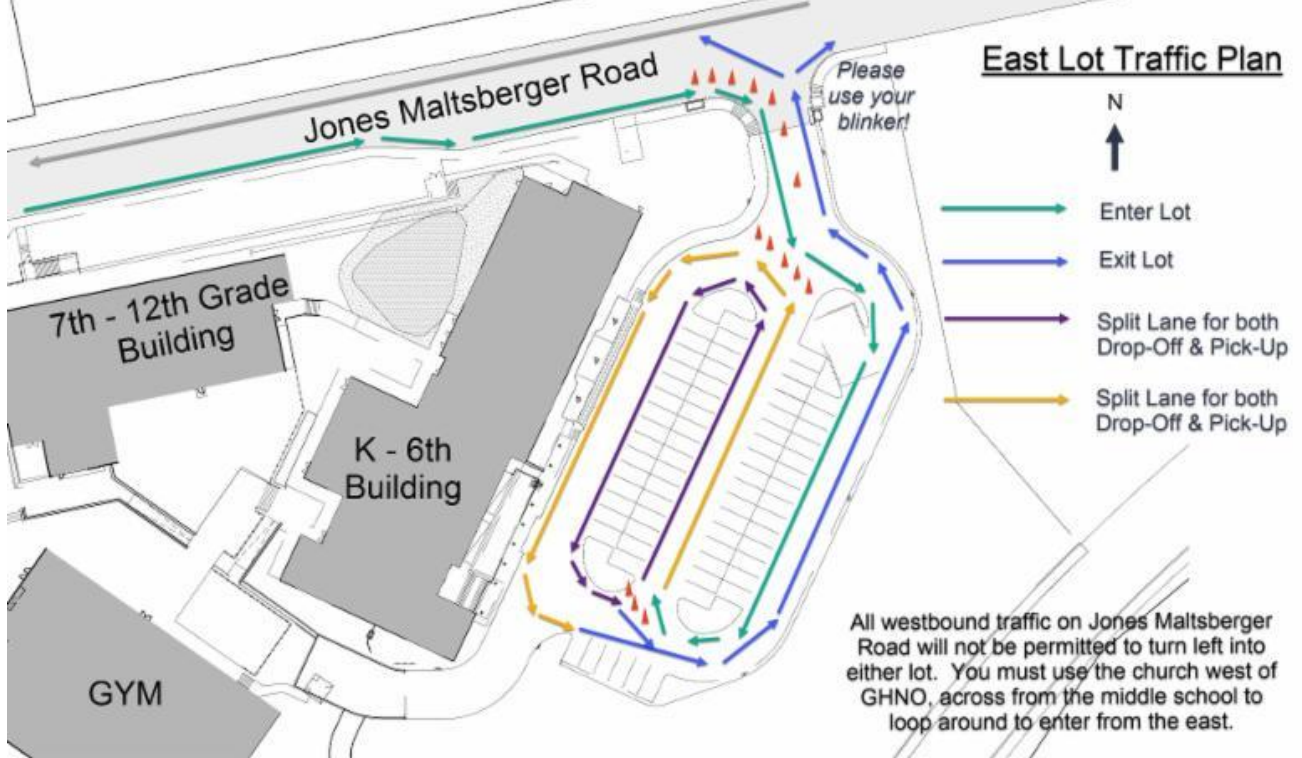
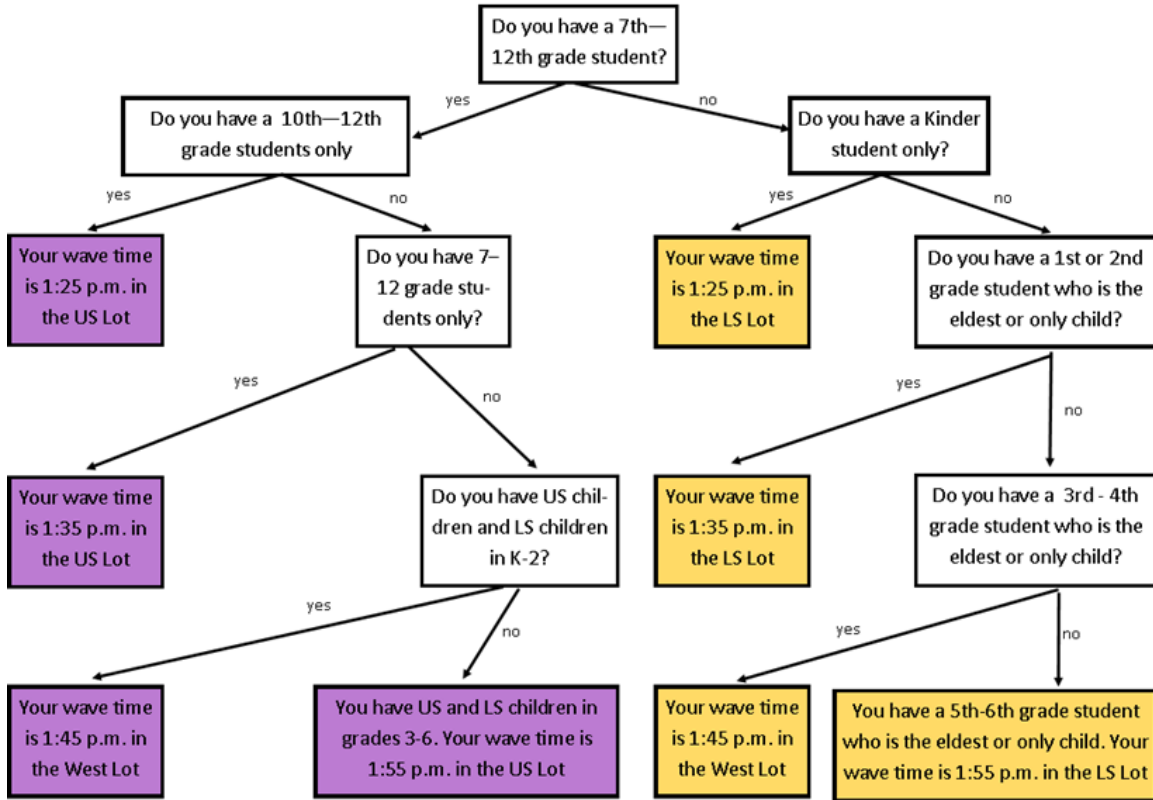
How do I find the lot I am supposed to use when I pick up my student? LS = Lower School, US = Upper School

How do I find the correct time to arrive at school for **regular** pick-up (Wave)?

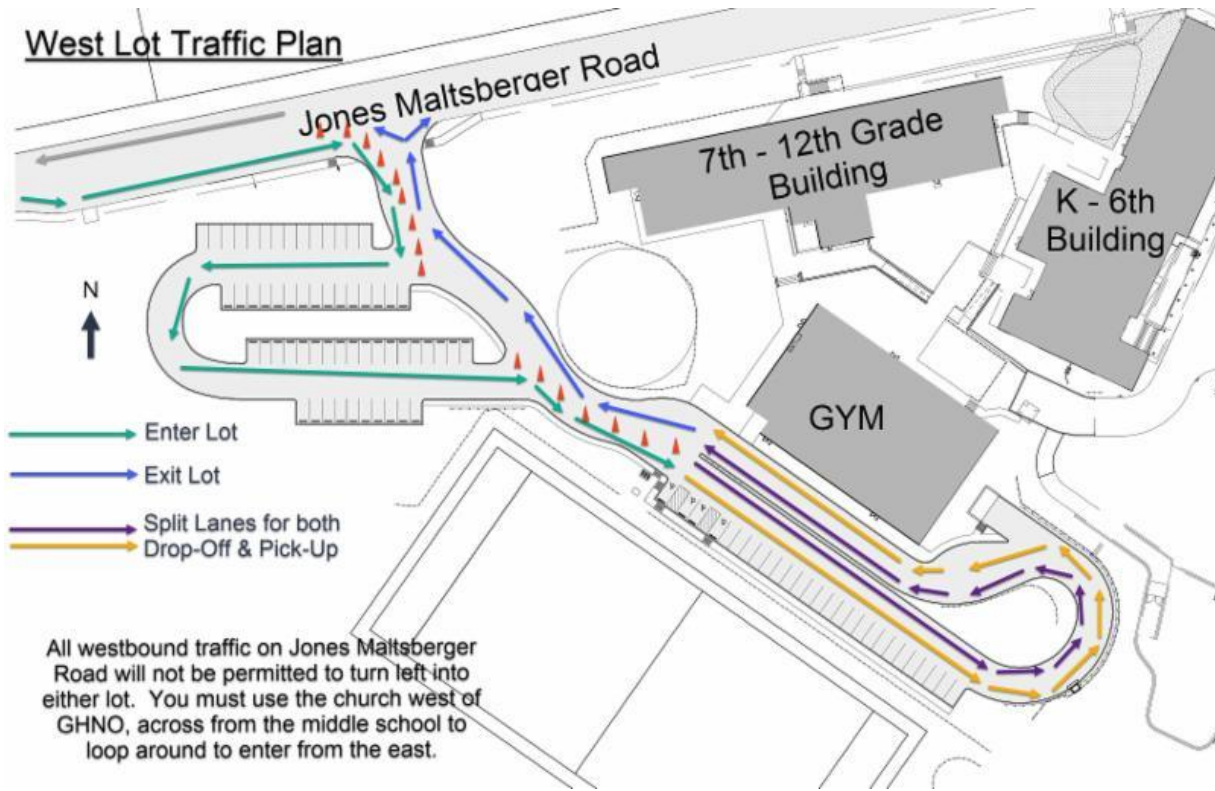


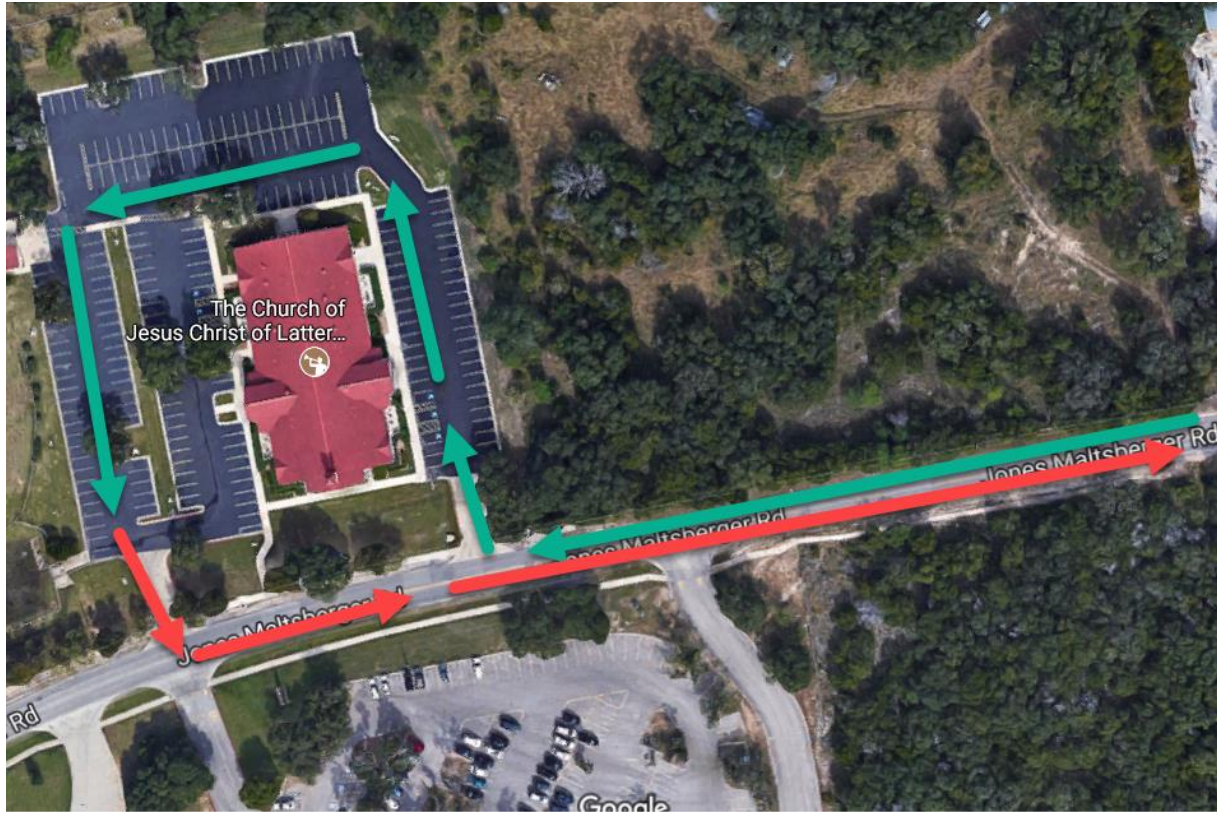
How do I find the lot I am supposed to use when I pick up my student? LS = Lower School, US = Upper School

How do I find the correct time to arrive at school for **early release** pick-up (Wave)?



West Lot Traffic Plan





As Great Hearts Northern Oaks is situated on a street with commercial traffic, we discourage students from walking or biking as sidewalks do not completely span our street. Students who walk or bicycle to school must arrive no earlier than 7:30 a.m. and must always obey the traffic lights and Walk/Don't Walk signals. Students may lock up bicycles at the bike racks, but all bicycles must be removed at the end of the school day; no bikes should be left on campus after hours or on weekends. The Academy is not responsible for any bicycles or other personal property left on the campus after hours or on weekends.

NOTE: As new developments and roads emerge near our school, we understand that new ways will emerge to enter onto Jones Maltzberger. These new routes may cause new traffic patterns. However, our fundamental concern is to minimize illegal U-turns in the street and U-turns within neighborly business parking lots. If you are driving westbound on Jones Maltzberger Rd (coming from Bulverde/Autrey Pond), please make your legal turn at the Church of Latter-Day Saints Parking Lot.