

# Welcome to the:

## Lowry Community Meeting

**July 22<sup>nd</sup>, 2021**



**COLORADO STATE UNIVERSITY**  
**EXTENSION**



**DENVER**  
THE MILE HIGH CITY



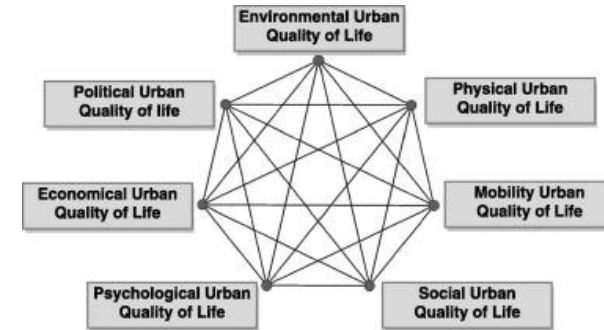
# Today's Agenda

- Welcome From Lowry United Neighborhoods
- Denver Neighborhood Planning and Land Use - Councilwoman Sawyer
- Introducing the Civic Capacity Index and Survey - Patti Schmitt
- Closing and Next Steps - Paul Vranas



# Lowry Neighborhood Plan: Current State and Future Vision

- Original 1993 Lowry Reuse Plan includes: Land Use, Urban Design, Housing, Transportation
  - Much of the reuse plan has been implemented
  - Lack of a current plan is causing Lowry to be reactive to external forces, vs intentional in controlling our destiny.
  - Potential to expand the scope to include quality of life and social fabric?
- Multiple frameworks exist for measuring & improving quality of life
- First step forward is to open up a discussion amongst stakeholders in Lowry about where we are....  
In order to inform where we want to go.



Example of Urban Quality of Life Framework  
"Principles of urban quality of life for a neighborhood"  
HBRC Journal, Volume 9, Issue 1,

## COMPREHENSIVE PLAN 2040



### CITYWIDE PLANS



## NEIGHBORHOOD & SMALL AREA PLANS

# Comprehensive Plan 2040

Equitable,  
Affordable and  
Inclusive



Strong and  
Authentic  
Neighborhoods



Connected,  
Safe and  
Accessible Places



Economically  
Diverse and  
Vibrant



Environmentally  
Resilient



Healthy and  
Active





# Blueprint Denver

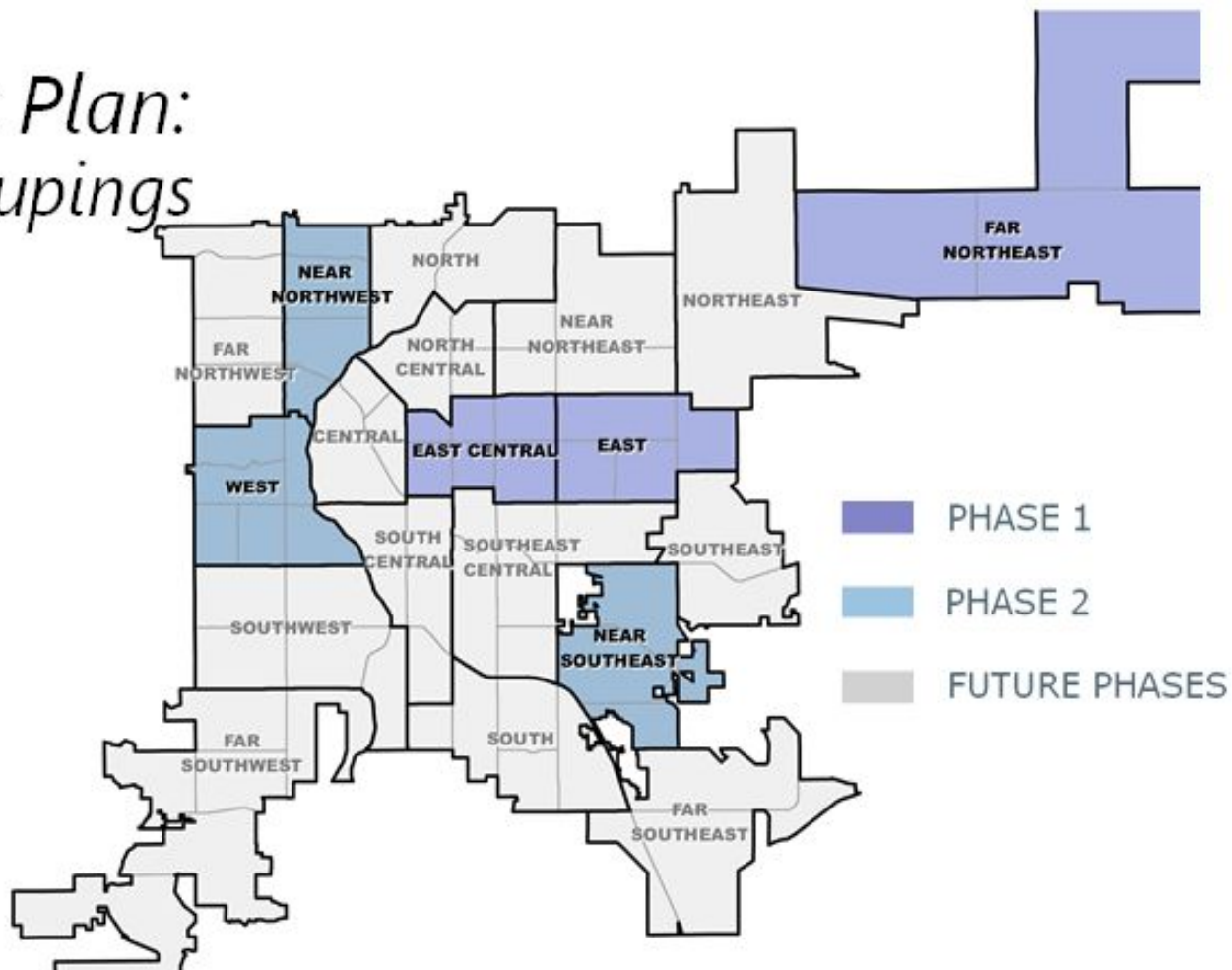
Blueprint Denver is a citywide land use and transportation plan that was first adopted in 2002 and updated in 2019. The plan covers a 20-year period, and calls for growing an inclusive city through:

- complete neighborhoods and complete transportation networks;
- a measured, common-sense approach to new growth;
- and for the first time, land-use decisions through the lens of social equity.

Each year, Community Planning and Development will measure outcomes related to the plan goals, policies, and strategies in Blueprint Denver.



# *NPI Strategic Plan: Plan Area Groupings*



The background image shows a workshop setting. In the foreground, a person's hands are clasped together. In the background, a whiteboard is covered with handwritten notes and drawings. Visible text on the whiteboard includes 'Jues', 'Ship', 'PITI food', 'H.C', 'Shannah', 'Standards', and 'ACTION'. There are also some diagrams and a red container on the table.

## Civic Capacity Index is:

A diagnostic tool for communities to determine how well they can work together to:

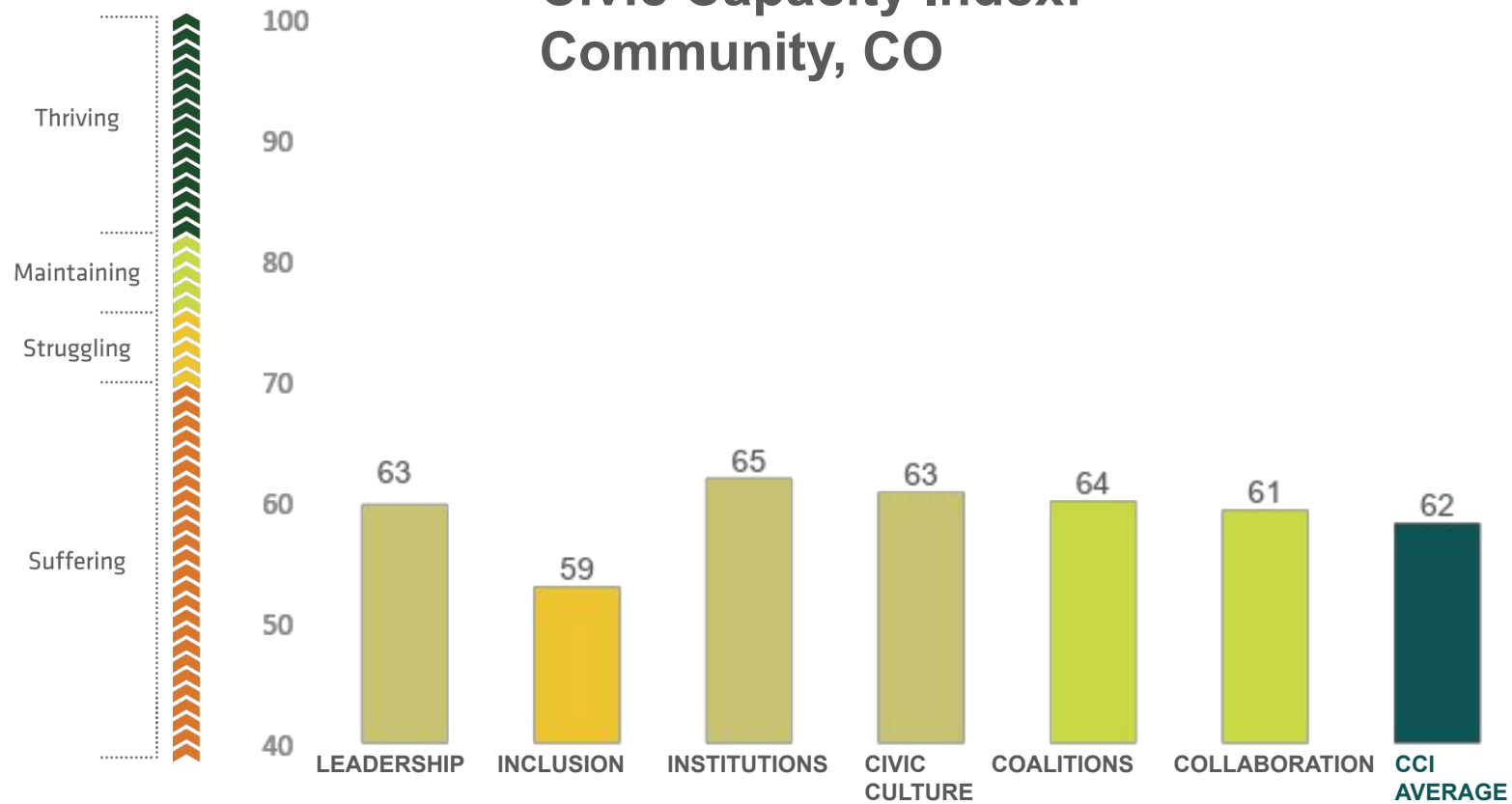
- Make decisions
- Solve problems
- Adapt in a crisis (resilience)





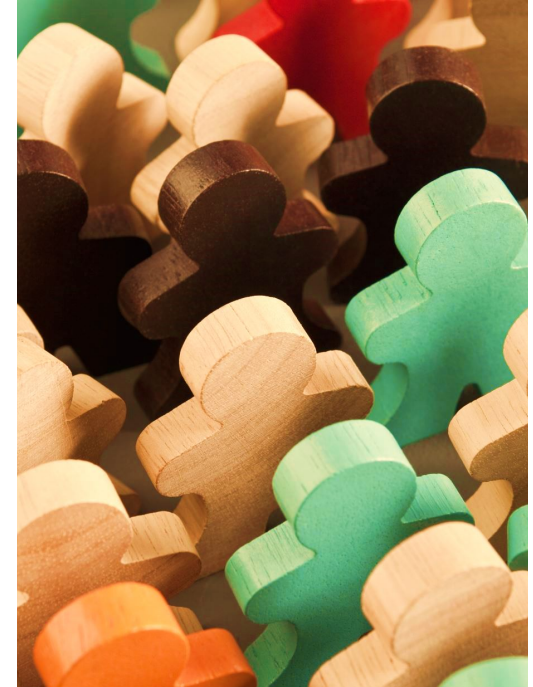
**Civic  
Capacity**

# Civic Capacity Index: Community, CO



# Why is civic capacity important?

- The lower the death rate, the higher the score in the leadership domain.
- The lower the death rate, more inclusive the county was.
- The lower the case rate, the higher the social control.
- The lower the case and death rate, the higher the social cohesion.
- The lower the case and death rate, the higher the community resilience.



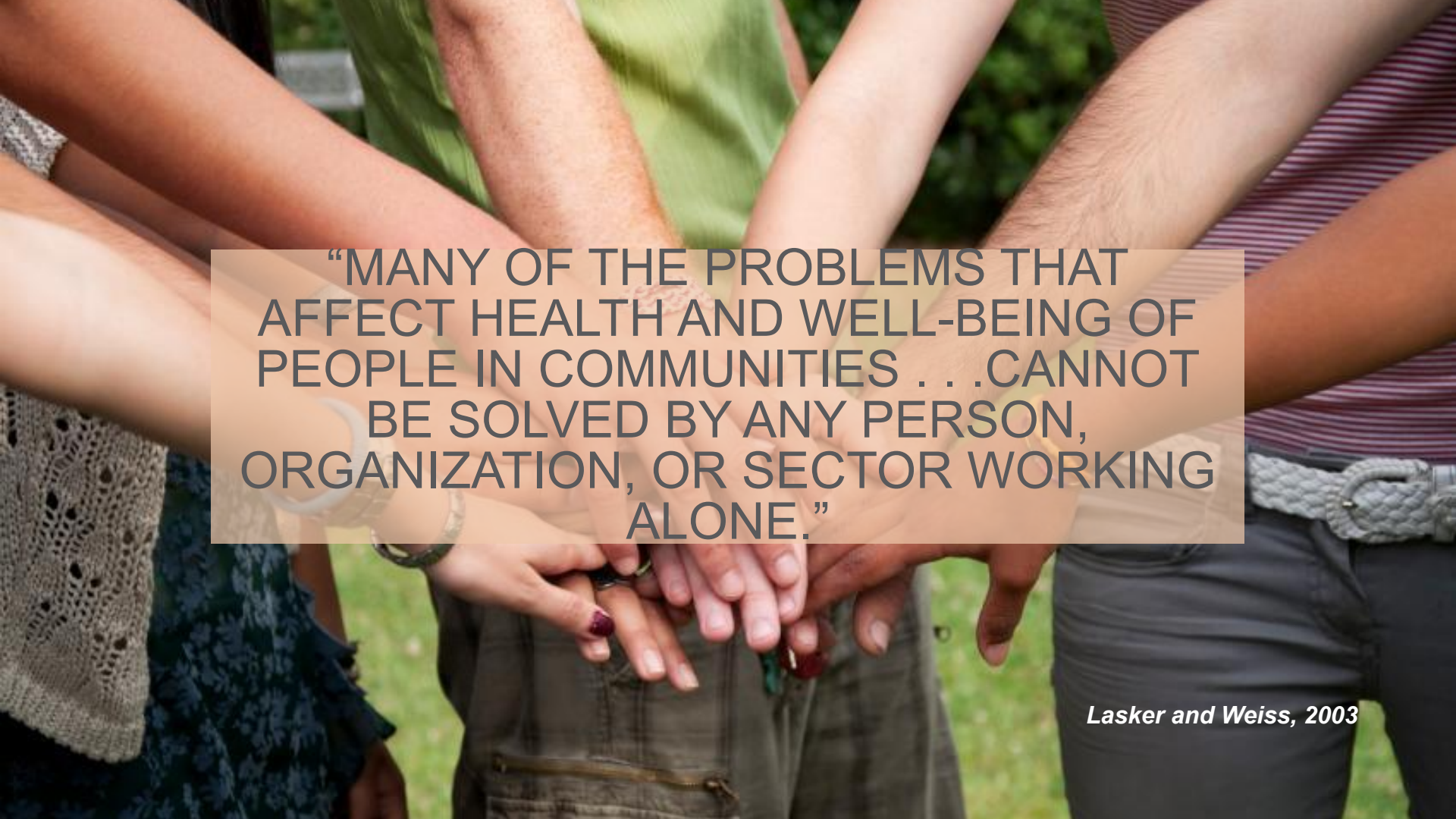
Chrislip, MacPhee, and Schmitt  
2021



# What do we know? There are more challenges coming

- Affordable housing
- Access to health care and specialty health care
- Job loss
- K-12 education during a pandemic
- Food insecurity
- Economic recovery
- Systemic inequities
- Global warming



A close-up photograph of several people's arms and hands reaching towards the center and clasping together in a circle. The hands are of various skin tones, and some are wearing rings or bracelets. The background is a blurred green, suggesting an outdoor setting. A semi-transparent orange rectangular box is overlaid in the center, containing a quote in dark grey, all-caps text.

“MANY OF THE PROBLEMS THAT  
AFFECT HEALTH AND WELL-BEING OF  
PEOPLE IN COMMUNITIES . . .CANNOT  
BE SOLVED BY ANY PERSON,  
ORGANIZATION, OR SECTOR WORKING  
ALONE.”

*Lasker and Weiss, 2003*

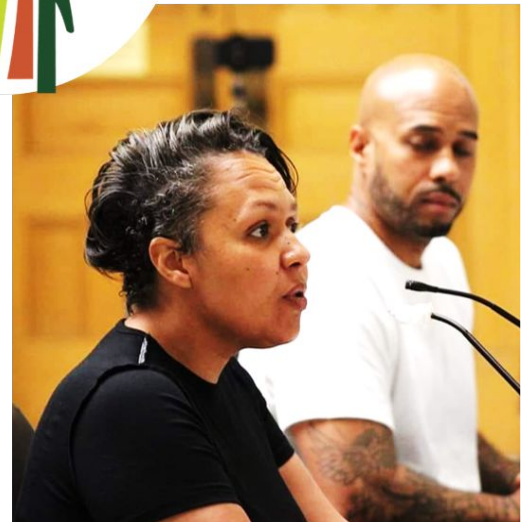




**HOW DO WE BRING COMMUNITY TO THE  
TABLE?**

# How will we use the civic capacity index in Lowry?

---



# Q&A

- “Raise Your Hand” on Zoom

# Closing & Next Steps

- Please take 12 minutes now to complete survey
- Forward survey on to your colleagues who have visibility to civic engagement in Lowry
  - Survey to close on 8/5
- Stay tuned for a read-out of CCI results and next steps in Lowry 2050 Initiative
- Questions/Comments?
  - Paul Vranas - paulvranas@gmail.com
  - Patti Schmitt - patti.schmitt@colostate.edu
  - CW Amanda - Sawyer Amanda.Sawyer@denvergov.org

**Link to Survey**

**<http://bit.ly/lowrycci>**