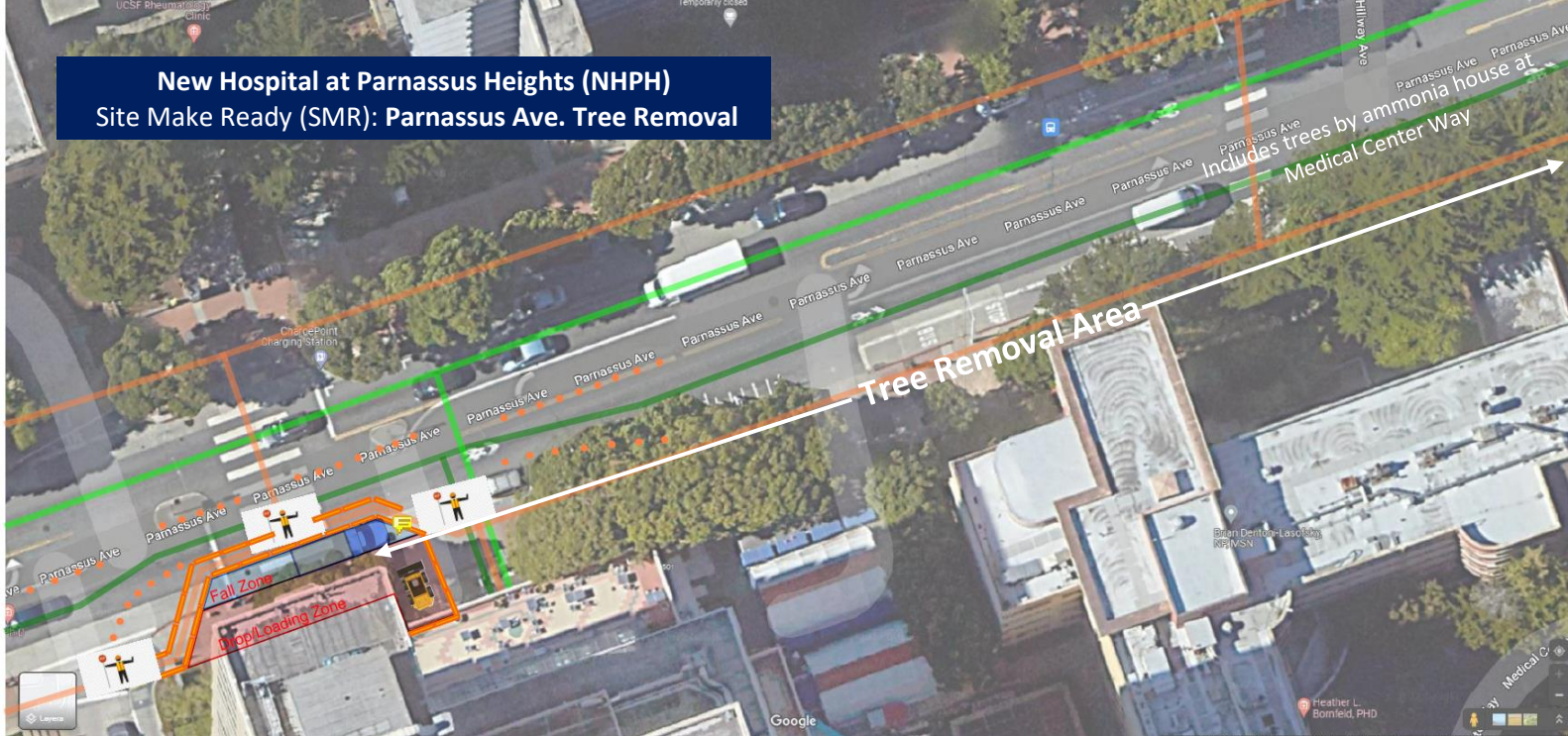


## New Hospital at Parnassus Heights (NHPH) Site Make Ready (SMR): Parnassus Ave. Tree Removal



### PROJECT OVERVIEW

To serve the city with world-class care for the next century, UCSF is constructing a 15-story hospital on the Parnassus Heights campus on the current Langley Porter Psychiatric Hospital and Clinics (LPPHC) site. Construction of this new hospital will continue through 2029, with the new hospital opening in 2030.

Beginning February 2022 through April 2027, 20 Site Make Ready (SMR) and 12 Hospital Make Ready (HMR) major projects are required to prepare for demolition of LPPHC and construction of the new hospital building at Parnassus Heights. We are communicating impacts of this work broadly to UCSF faculty, staff, learners, patients and visitors, and the community.

**Senior Project Manager:** Brad Whitney

**Contact the project:** 415.476.6577

**[newhospitalPH@ucsf.edu](mailto:newhospitalPH@ucsf.edu)**



UCSF Health

**Scope:** To prepare for demolition of Langley Porter Psychiatric Hospital and Clinics (LPPHC) and construction of the new hospital, trees will be removed along Parnassus Avenue. Here are more details about this work:

#### Dates and Times

- March 6, 2023, for approximately 2.5 weeks
- Monday – Friday
- 8:00 AM – 5:00 PM

Tree removal will be phased, moving west to east:

- Phase 1: Emergency Department ambulance bay entrance
- Phase 2: In front of LPPHC
- Phase 3: Ammonia House by Medical Center Way

#### Impacts / Mitigation

- **Noise:**
  - Adjacent buildings may be impacted during tree removal with chainsaw noise
    - Logs/debris will be hauled offsite for chipping
  - Machinery and equipment are properly fitted with mufflers and noise abatement devices.
  - OSHA regulation required backup alarms will remain on equipment.
- **Traffic:**
  - Street parking/loading zones will be inaccessible
  - Pedestrians will be re-routed onto protected street pathway
    - Flaggers will be in place to direct vehicle and pedestrian traffic at all times during work hours.
    - Ramps will be in place to access street pathway.
- **Visual:** Tree removal personnel and equipment will be on-site for the duration of this project
- **Vibration:** Not expected
- **Dust:** Negligible