

JUNE 2023

EVENTS | WORKSHOPS | CLASSES

132 Canal Street | New Smyrna Beach FL | 32168

theHUBoncanal.org | 386.957.3924

Monday - Saturday 10am-5pm | Sunday 10am-2pm



THE HUB ON CANAL + JANE'S ART CENTER = ONE FOR THE ARTS

1st SATURDAY | JUNE 3 GALLERY WALK EXHIBITION & SALE

Reception 4-7pm

THE HUB ON CANAL

THE FOUNDERS GALLERY

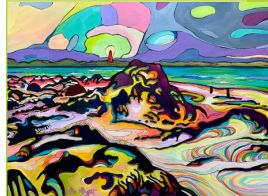
Continuing through June, *Emerging: A Mix of Local & Promising Talent* by Daytona State College Studio Arts Students. The students in this exhibition are either seeking an art degree or taking art courses as electives to enhance their skills and knowledge in the fine arts. The exhibit shows off the talented students' growing levels of skill and creativity. Through June 25.

On 1st Saturday only, Hub Members receive a 10% discount on purchases from the exhibit in The Founders Gallery.



ART CONNECTIONS 10am-7pm As you stroll Canal Street enjoying 1st Saturday events, stop by The Hub to visit with our artists. See how they work and find out what sparks their creativity. We're in the heart of the Arts District, showcasing the work of more than 60 artists across a range of mediums.

TALK ART! Eliza Midgett *Psychedelic Summer* 1-2pm Get to know our Hub artist! At this fun, informal demo and conversation, you learn how the artist works, her media and techniques.



JANE'S ART CENTER | 199 DOWNING STREET

Brutalism, pottery by Mike Nelson.

Brutalism is a highly expressive style with an emphasis on materials, textures and construction. Texture is the main element in Mike's current work. He throws multiple pieces on the wheel, then tears them apart and reassembles. With slashes, swats and pokes, each piece is divergent as it develops. Exhibit through June 24.



All 1st Saturday events are free and open to the public.

MUSIC NIGHT | JUNE 9 FRIDAY 7-9pm SHEKINAH KING



With a voice often compared to Pink, Kelly Clarkson or Adele, Shekinah puts a new spin on some of your favorite tunes! She pulls inspiration from a wide variety of musical influences and has performed more than 1,500 songs from many decades and genres, plus some originals. The award-winning, Wisconsin-based performer's music is available on all major streaming platforms ... now at The Hub! Doors open at 6:15pm.

\$10 at the door

MUSIC NIGHTS | LOOKING AHEAD!

THE GAZEBROS

Friday, August 11, 7-9pm
at The Hub on Canal

2nd annual FALL INTO JAZZ WEEKEND

Friday, Sept 22, 7-9pm | Sybil Gage
Sunday, Sept 24, 11am-1pm | Jazz Brunch Très Bien
at The Hub on Canal

REED FOLEY

Friday, October 13, 7-9pm
at Jane's Art Center Courtyard

VETERANS, CURRENT MILITARY AND MILITARY FAMILY MEMBERS

REGISTER NOW TO ENTER

THE HUB ON CANAL

Art Strings Exhibition

NOVEMBER 4-26

Deadline For Entry August 1, 4pm

Veterans of the armed services, current military members and members of their immediate families are invited to enter this unique exhibition of artwork featuring stringed instruments. The official opening of the exhibit will be November 10, in honor of Veterans Day. Guitars 4 Vets students and instructors will provide the music.

Enter online at theHUBoncanal.org or download the entry form and postmark or deliver to The Hub by 4pm, Tuesday, August 1. Drop off your completed artwork October 31-November 1.

For complete information go to theHUBoncanal.org
or contact Rita West at rwest3325@gmail.com.

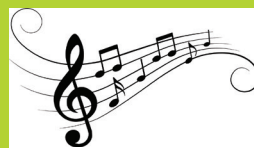


ART IN THE FORM OF FILM PATHS OF GLORY | JUNE 16 FRIDAY 5:45-9pm

An early film by the great director Stanley Kubrick, this 1957, black & white drama set in WWI stars a young Kirk Douglas. Its plot is loosely based on a true story about three randomly chosen French soldiers who were unreasonably executed for cowardice after a near-suicidal mission failed.

The film's portrayal of what transpired was so powerful that when first released, the film was banned by the French government, which didn't want to be reminded of its commanders' incompetent disregard for the safety of soldiers in the trenches. Instructor Paul Marino introduces the film, raises questions to ponder and hosts a post-viewing discussion. Sponsor: Chases on the Beach, Where it's Always Sunny.

\$10 includes glass of wine or bottle of water



SLO' JAM | JUNE 28 FRIDAY 6-8pm

Marcia Buckingham hosts. ALL musicians welcome – beginner and advanced. Bring your guitar, ukulele, harmonica, percussion, etc. Play, sing along or just listen. Playbooks provided.

\$5 at the door, to join the jam or to listen

JUNE WORKSHOPS

ENROLL at theHUBoncanal.org, at 386.957.3924 or in person

NEW! CHALK ART FOR AGES 12 & UP with Sheri Zanosky.

4-Day Workshop, Monday-Thursday, June 5-8, 9am-noon. A fun, interactive artistic experience with lots of tips and tricks from award-winning professional chalk artist Sheri Z! Each day you chalk a different theme: ocean, jungle, woody and anything goes on the last day. We will chalk on the sidewalks along Canal Street in front of The Hub on Canal and on Magnolia Street in front of Jane's Art Center. Water, snacks and chalk provided. Member/Member Parent \$110; Non-Member/Non-Member Parent \$130 (all supplies included)



BECOME A MEMBER OF THE HUB ON CANAL

Your Hub membership helps us provide our community with access to the arts – visual, musical, theatrical and more. Members enjoy many benefits including exclusive Members-only events and preferred pricing on workshops and classes.

Details at theHUBoncanal.org.

ART CLASSES

NEW! COASTAL WATERCOLORS with SHERI ZANOSKY

Contact Sheri at 386.316.6347 or Sherizart@gmail.com

4-class series, Fridays, 9am-noon, starting June 9. Let go and unlearn everything you thought watercolor was supposed to be. Learn to be playful with your design. Unwind and become one with your creative spirit. Focus is on coastal wildlife and landscapes in raw and whimsical form. This is not your grandmother's watercolor! \$100 / series or \$25 / class



EXPLORE & CHANNEL YOUR CREATIVITY with CAROLYN LAND

Contact Carolyn at carolynland@gmail.com



4-class series, Fridays, 9:30am-12:30pm, starting June 9. Get creative! Carolyn helps you open the pathways to

harness your creative energy. Work at your own pace, in your own style, in any medium you choose. The atmosphere encourages creative and mental growth. Some painting experience desirable, but not required.

\$20 / class (bring your supplies)

JEWELRY MAKING & DESIGN with DEBBIE MOSER

Contact Debbie at moserd@bellsouth.net



Fridays, 4-5:45pm. Learn basic and advanced jewelry-making techniques including design, wrapping and metal-smithing.

\$20 / class (materials and basic tools provided)

PHOTOGRAPHY with KATHY TUBBS

Contact Kathy at 386.690.4779 or kathytubbs@outlook.com SATURDAYS / June 10 & 24

The Composition 10-10:50am. Learn how to recognize and utilize visual elements to create engaging photos. All device types are welcome; bring your phone with camera, your basic digital camera or DSLR camera.

The Technical Skills 11-11:50am. Learn to use and manipulate the power of a DSLR camera to your advantage and how to manage the power of light. Bring your DSLR camera. \$25 / class



The Hub on Canal offers Disciplined Art Education Programs for Grades K-12. Contact Carinna at corinna@thehub@gmail.com

LOOKING AHEAD!

SUMMER CLASS SCHEDULE

ELEVATE YOUR DRAWING SKILLS with Bob Stinziano | classes resume in July

PAINTING FOUNDATIONS with Mary Gerlach | classes resume in July

BENVENUTO IN ITALIA! with Joanne Kehrl | classes resume in July

SKETCHING IN WATERCOLOR with Evy Okerstrom | classes resume in September

BOOKS & LANGUAGES

FRENCH with YVELINE DEL VILLAR

Contact at frenchwithyveline@gmail.com or text 407.760.7355

Explore the beautiful romance language and achieve conversational ability.

WEDNESDAYS

French 3 (advanced) 10-11:15am

French 1 (beginner) 11:30am-12:45pm

French 4 (advanced/fluent) 1-2:15pm

French 2 (intermediate)

2:30-3:45pm

Fast Track French (short intro to prepare for travel) 4-5:15pm

\$20 / class



THE HUB BOOK CLUB

Contact Mary Jane Barenbaum at marbare22@gmail.com

Friday, June 9, 2-4pm. Second Friday, every month. June book is *Ecology of a Cracker Childhood* by Janisse Ray. July book is *The Light We Carry* by Michelle Obama. The Hub Book Club sponsored by Volusia Eye Associates. Free



NEW! COMING IN JULY

BIENVENIDOS A LA CLASE DE ESPANOL!

SPANISH with ELAINE TOLVO

FRIDAYS STARTING JULY 7

Beginner, Intermediate & Grammar Classes

\$20 / class

Details at theHUBoncanal.org



MUSIC

SOCIAL DANCE with RICHARD RAKHMATULIN

Contact Richard at 321.558.0730 or Richdance21@gmail.com

Sundays 2-3pm and Tuesdays 6-7pm. A fun, energizing group class for beginners.

Learn salsa, bachata, hustle, swing, more. Come with a partner or solo.

\$15 / class

Private lessons available, contact Richard.



MUSIC

GROUP UKULELE with SALLY MACKAY

Contact Sally at 386.235.4140 Bring your uke and join the fun!

MONDAYS

Beginner 2-2:45pm

Intermediate 3-3:45pm

SATURDAYS

Beginner 9:30-10:15am

Intermediate 10:30-11:15am

Advanced 11:30am-12:15pm

\$20 / class

Private Guitar Lessons available, contact Sally.



HARMONICA with FARLEY PALMER

Contact Farley at 386.314.5718

Thursday, June 8, 6-8pm. Monthly, second Thursday.

Open to students of all levels.

\$10 / class



WELLNESS & YOGA

ALZHEIMER'S CAREGIVER SUPPORT GROUP

Contact 386.847.2322 or assistedlivingmadesimple@gmail.com

Tuesday, June 13, 10:30-11:30am. Monthly meeting is designed to provide emotional, educational and social support to people who are caring for someone with Alzheimer's or dementia. This group is a safe place to share experiences, challenges, frustrations and small victories. Meets monthly, second Tuesday. Free

ART CONNECTS ALZ

Formerly *Memories in the Making*® Reservations required

Contact Sheila Collins, RN at 386.847.3142 Wednesdays, June 7, 14, 21 & 28, 10:30am-noon. Art program in partnership with The Alzheimer's Association is designed for people experiencing early-stage Alzheimer's or dementia, and their caregivers. Program encourages therapeutic expression through painting and drawing. Creativity, fun and relaxation are the primary focus! No art experience is necessary. Free

BECOME A MEMBER OF THE HUB ON CANAL

Your Hub membership helps us provide our community with access to the arts – visual, musical, theatrical and more. Members enjoy many benefits including exclusive Members-only events and preferred pricing on workshops and classes. Details at theHUBoncanal.org.

To enroll in CLASSES: contact the instructor to register and pay. To enroll in WORKSHOPS: online at theHUBoncanal.org is recommended. Or call 386.957.3924. Or stop by The Hub. Subject to change or cancellation. Call or check the website for current information.