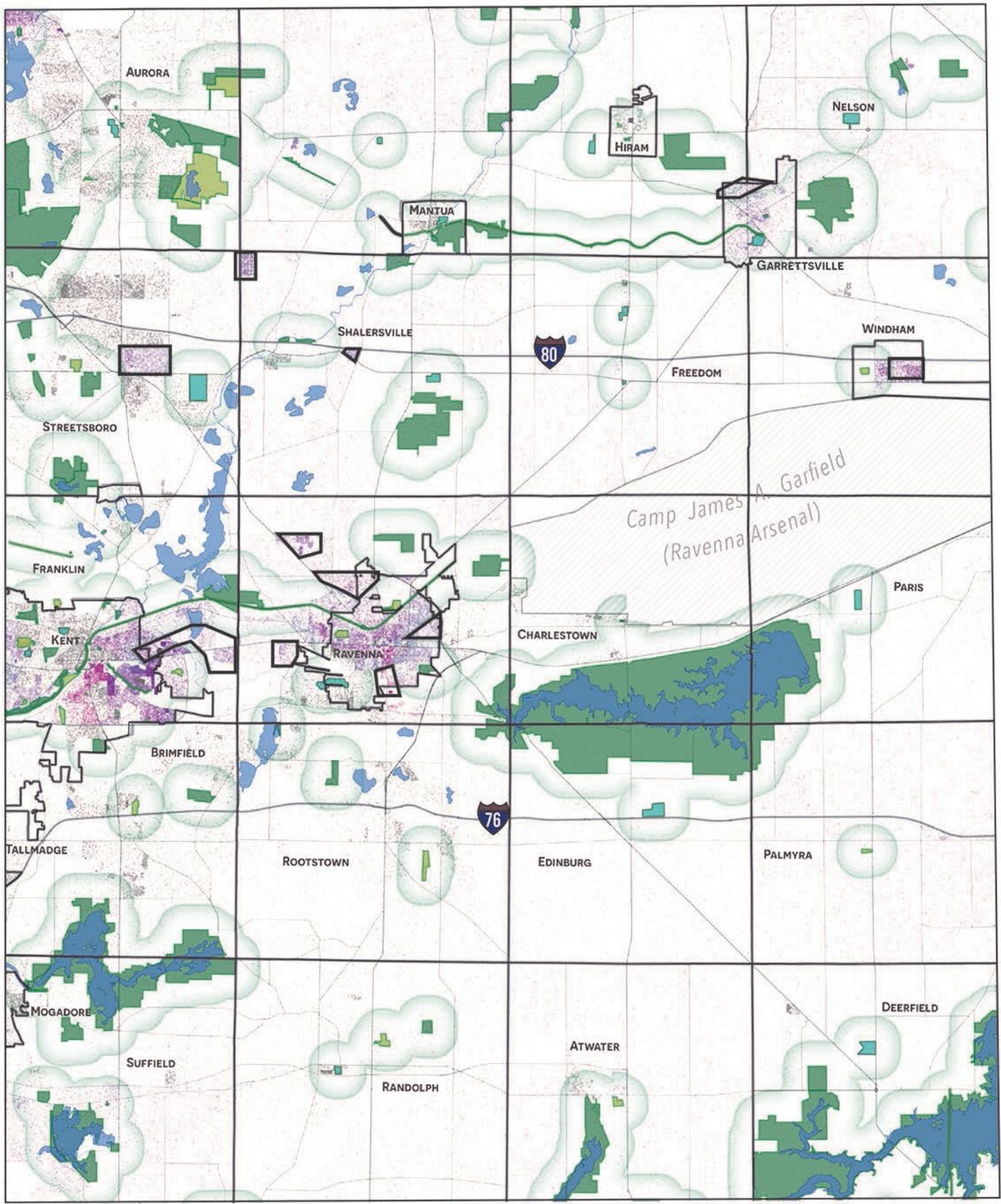


PORTAGE COUNTY PARK DISTRIBUTION



1 DOT = 1 PERSON

POPULATION DENSITY

High

Low

Low

High

VULNERABILITY*

PARK & HALF MILE BUFFER

- Playgrounds
- Ball fields
- Nature trails
- Trail

NEIGHBORHOODS WITH HIGH NEED & LOW ACCESS

MAP BY JENNIFER MAPES/KENT STATE UNIVERSITY
FOR LEAGUE OF WOMEN VOTERS KENT

*Some people are more in need of close park access than others, including those without access to a vehicle, in poverty and/or with a disability. This map identifies census block groups that fall in the highest 25% of categories in Portage County. Highest vulnerability indicates the neighborhood is the highest in all three categories, lowest vulnerability indicates the neighborhood is not in the highest 25% for any of these categories.