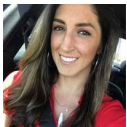




## Where and when (describe methods)

Sunview Health and Rehab Speech Therapy and Respiratory team collaborated to provide pleasure feedings for patients who are ventilator dependent



Improving quality of life for ventilator dependent patients by using in-line PMVs (Passy-Muir Valve: allows for inhalation through trach, closes during exhalation; used for speech and increases safety with swallowing function- allows for cough) so they can eat even as a lifelong vent.

[illegible]

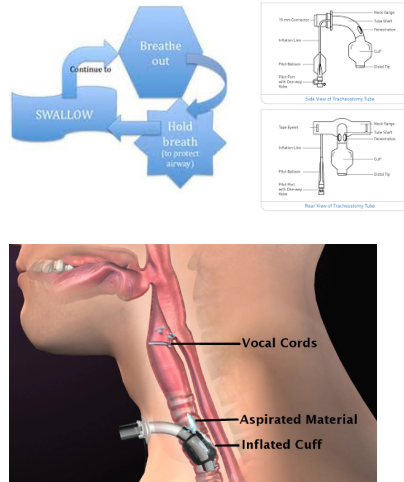
### Case Study:

CG- 39 y/o male with history of transverse myelitis who is vent dependent. In-line PMV used for communication and PO intake.

IL- 72 male, s/p C4 fx who is vent dependent. In-line PMV used for communication and PO trials.

**Goal:**

Collaboration  
Therapy, Respiratory and  
Nursing. Skilled (Skilled  
Maintenance) treatment  
including family and  
CNA training around safe  
swallowing resulting in  
higher quality of life (resident  
satisfaction) for  
LTC Ventilator  
residents and  
improved QMs.



The use of an in-line PMV with patient's who are vent dependent can not only increase QM's for the facility but offer an overall improvement in quality of life. The ability to communicate basic wants and needs is essential to our patients, especially our most acute patients.

Prior use of the inline PMV, CG was NPO at all times, unless he was weaned from the vent. He could also not communicate with staff and family. The patient is now tolerating a regular/thin liquid diet and able to verbalize wants and needs and complete video chats on his tablet. Patient IL is also seeing similar results. After successfully trialing and now tolerating the in-line PMV, the patient spoke to his daughters on FaceTime for the first time since his accident. IL is also being seen by speech therapy currently for PO trials.

Both patient's are currently doing well with their in-line PMV's at this time.

## Acknowledgements

Nursing, Respiratory, and Sunview Pulmonary Providers.