



**McTrade**  
MACHINERY  
GRAPHIC ARTS

**Robert A. Mekking**  
Managing Director  
Phone: +31 65 34 43 948  
E-mail: [info@mctrade.nl](mailto:info@mctrade.nl)  
[www.mctrade.nl](http://www.mctrade.nl)

**Dear Colleagues and Partners,**

We proudly present, as owners, next professional and complete 2-up CTP installation with online processor:

## Mitsubishi - SDP Eco 1630II

### Machine information:

This professional, compact and complete ctp installation produces 2 up size offset ready plates for all small size offset printing machinery (all portrait scape- and land scape machines). The plates are colour separated and produced without any further manual labour in this nice set of machinery. Development, stabilizing, washing and drying of the plates is done in the low-chemical integrated plate processor. Settings can be made for different kind, brands and sizes of plates or offset machinery etc.

### Specifications:

Type: Mitsubishi SDP-Eco-1630II

Quality: 1016 up to 2400 DPI - red laser diode 635 nm

Min - max. size: 229 x 220 mms - 414 x 580 mms

Speed: first plate = 2 minutes, after that: 77 plates/hr.

Digital operation and LCD controls, including Mitsubishi SDP RIP software installed on PC and original cd's and with Xitron dongle. Complete with Windows PC, flatscreen monitor, keyboard and cabling etc. All safeties on the machinery. Integrated processor for low chemical processing.

Year / Serial number: 2004 / 170450

### Technical- and optical condition:

Technical: 8/10

Optical: 8/10 (cleaned and checked)

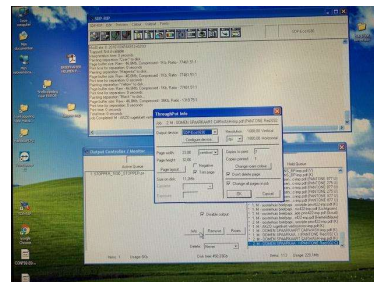
### Price & terms:

Our price: euro 2.150,--

Terms: FCA (Incoterms 2010)

Availability: direct from stock, ready for transport

Location: our warehouse Venray - the Netherlands



### Additional information:

If you need any more information or pictures, please send us an Email or check our website [www.mctrade.nl](http://www.mctrade.nl) and let us know. You can click on above shown photos and download them (and more) from our website. Of course, we can combine this machine with other machinery to load a container or truck. Please, ask for it.

**IMPORT - EXPORT GRAPHIC ARTS MACHINERY**