

---

Now more than ever, it's economics before agronomics to stay in the game. United Cooperative's SMART Technology allows you to put dollars and cents on every management decision, giving you the power to analyze your fields' financial performance at high resolution. Discover the best way to allocate your valuable working capital in order to maximize the return on investment for your hard work. SMART connects you to the tools you need to be successful.

---

## UNITED COOPERATIVE AGRONOMY LOCATIONS

---

Coleman	920-897-4010
Darlington	608-776-3860
Deerfield	608-764-5454
Denmark	920-863-2171
Hartford	262-673-8960
Hillsboro	608-489-3444
Johnson Creek	920-699-4990
Mayville	920-387-2410
Oshkosh	920-233-2261
Pickett	920-589-2311
Prairie du Sac	608-643-2348
Pulaski	920-822-3341
Reedsburg	608-524-2822
South Beaver Dam	920-887-7671
Shawano	715-524-8812
Westfield	608-296-3237



WWW.UNITEDCOOPERATIVE.COM



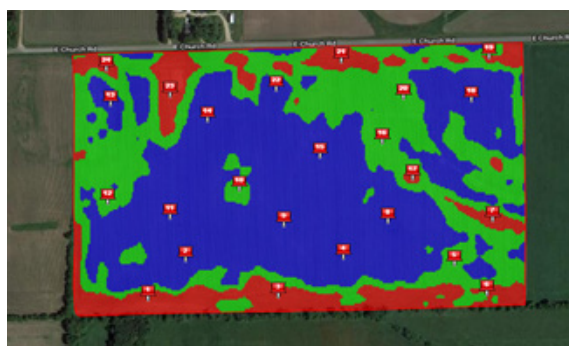
Soil  
Management  
And  
Rate  
Technology

Profit Through Precision

# FEATURED ITEMS:

- “SMART” ZONES – Setting up customized zones in each field using historical data such as yield information or satellite imagery to separate out unique areas in each field.
- “SMART” Sampling – taking separate grid samples in each zone to get a snapshot of fertility in different yield zones so we can manage fertility accordingly.

## NEW SMART ZONE SAMPLING METHOD

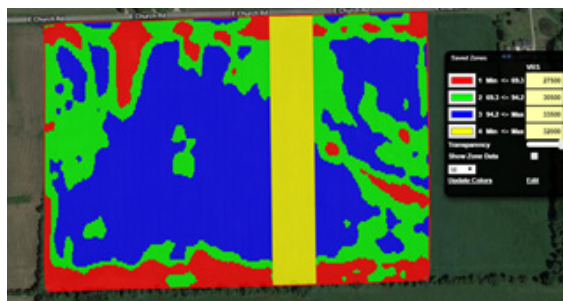


## OLD LINEAR GRID METHOD



- R7 Field Monitoring Tool (FMT) – high resolution in season imagery that will alert you to declining crop conditions within a field during the growing season

- “SMART” VRT Recs – fertility and lime recommendations and files to maximize profitability in each zone.



- Climate FieldView Plus - seamlessly collect, store, and visualize critical field data, monitor and measure the impact of your agronomic decisions on crop performance,



- “SMART” VRN – variable rate nitrogen recommendations to maximize RIO
- “SMART” Profit Zone Manager – Calculates ROI on each field and each zone within a field



## OTHER AVAILABLE ITEMS:

- Soil, Tissue & Nematode samples geo-referenced using SMART zones
- Mapping Field boundaries or tile lines
- Manure samples
- Nutrient management plans for all types of farms including CAFO farms.