



121,979 Total Square Feet (10% to 100% Office)
Central Orange County Location



AVAILABLE FOR LEASE

THE PARK ANAHEIM

±5,877 SF INDUSTRIAL UNIT

1130 N Gilbert St. | Anaheim, CA | 92801



**Rexford
Industrial**

DAUM
COMMERCIAL REAL ESTATE SERVICES



Property Highlights

- Central Orange County Location
- Ground Level Loading
- 18' Minimum Warehouse Clearance
- 3.3/1000 Parking
- I5- Freeway Frontage
- Zoning: I
- Nearby Retail Amenities
- Professionally Managed
- New Paint, Carpet, and Refurbished Restrooms
- Fully Fenced and Gated
- Lease Rate: \$1.60 G PSF
- CAM Fee: \$.18 PSF



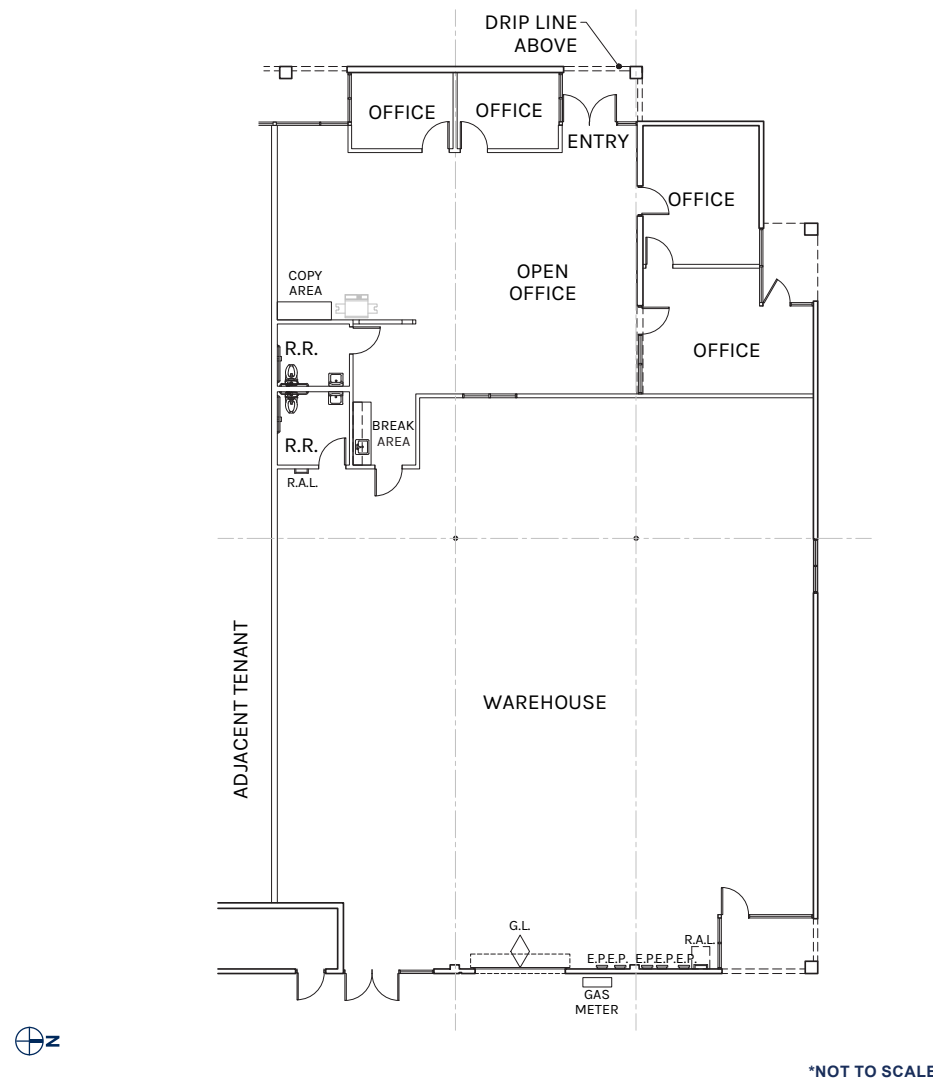


WAREHOUSE
±3,967 SF

OFFICE
±1,910 SF

TOTAL
±5,877 SF

PLAN LAYOUT SUBJECT TO FIELD CONDITIONS AND MAY DIFFER FROM PLAN AS SHOWN. ALL INFORMATION PRESENTED ON THIS DRAWING IS PRESUMED TO BE ACCURATE, HOWEVER TENANT SHOULD VERIFY PERTINENT INFORMATION PRIOR TO COMMITTING TO A LEASE. ANY FURNITURE OR APPLIANCES SHOWN ON PLAN ARE FOR CONCEPT ONLY AND WILL BE TENANT PROVIDED.



WAREHOUSE
±3,967 SF

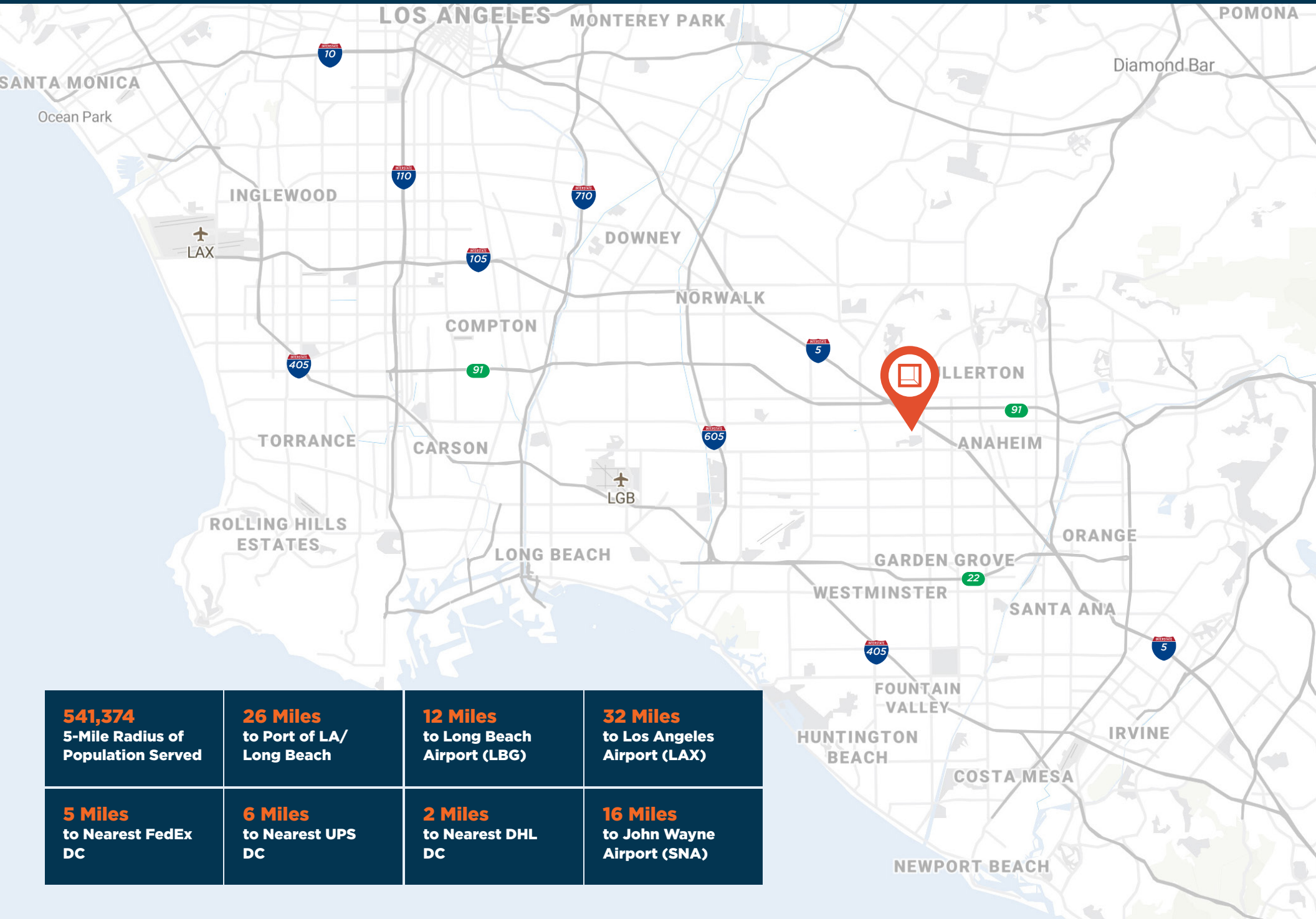
OFFICE
±1,910 SF

TOTAL
±5,877 SF

PLAN LAYOUT SUBJECT TO FIELD CONDITIONS AND MAY DIFFER FROM PLAN AS SHOWN. ALL INFORMATION PRESENTED ON THIS DRAWING IS PRESUMED TO BE ACCURATE, HOWEVER TENANT SHOULD VERIFY PERTINENT INFORMATION PRIOR TO COMMITTING TO A LEASE. ANY FURNITURE OR APPLIANCES SHOWN ON PLAN ARE FOR CONCEPT ONLY AND WILL BE TENANT PROVIDED.

Location

1130 N. GILBERT ST.



541,374
5-Mile Radius of
Population Served

26 Miles
to Port of LA/
Long Beach

12 Miles
to Long Beach
Airport (LGB)

32 Miles
to Los Angeles
Airport (LAX)

5 Miles
to Nearest FedEx
DC

6 Miles
to Nearest UPS
DC

2 Miles
to Nearest DHL
DC

16 Miles
to John Wayne
Airport (SNA)



**Rexford
Industrial**

Leasing Contacts

Craig Sullivan

craig.sullivan@daumcommercial.com

Direct: 949.242.1710

CA License #01323421



D/AQ Corp. #01129558. Maps Courtesy ©Google & ©Microsoft. Although all information is furnished regarding for sale, rental or financing is from sources deemed reliable, such information has not been verified and no express representation is made nor is any to be implied as to the accuracy thereof, and it is submitted subject to errors, omissions, changes of price, rental or other conditions, prior sale, lease or financing, or withdrawal without notice.