



±121,979 Total Square Feet (10% to 100% Office)  
Central Orange County Location



# AVAILABLE FOR LEASE

## THE PARK ANAHEIM

±8,000 SF | INDUSTRIAL UNIT

1134 N Gilbert St. | Anaheim, CA | 92801



**Rexford  
Industrial**

**DAUM**  
COMMERCIAL REAL ESTATE SERVICES



## Property Highlights

- Central Orange County Location
- 7 Private Offices
- Open Office Space
- Break Area
- Ground Level Loading
- 18' Minimum Warehouse Clearance
- 3.3/1000 Parking
- I-5 Freeway Frontage
- Zoning: I
- Nearby Retail Amenities
- Professionally Managed
- Fully Fenced and Gated
- Lease Rate: \$1.60 PSF Gross
- CAM Fee: \$0.18 PSF





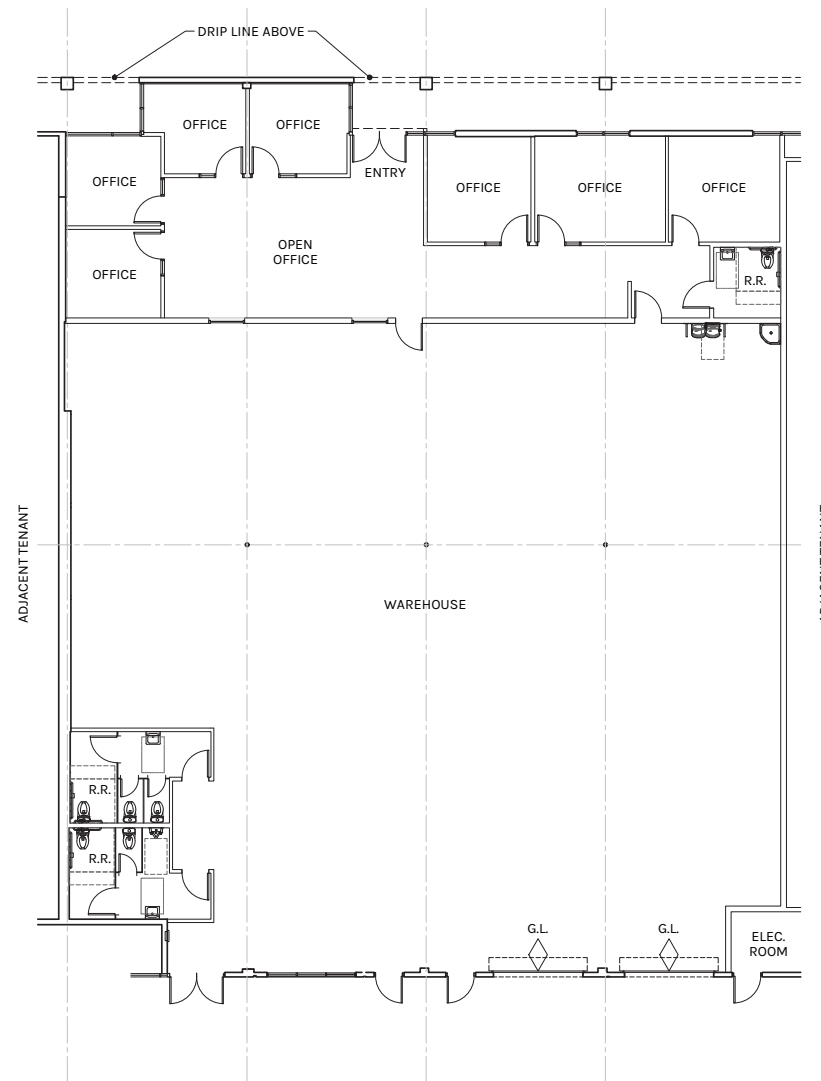


**WAREHOUSE**  
±6,146 SF

**OFFICE**  
±1,854 SF

**TOTAL**  
±8,000 SF

PLAN LAYOUT SUBJECT TO FIELD CONDITIONS AND MAY DIFFER FROM PLAN AS SHOWN. ALL INFORMATION PRESENTED ON THIS DRAWING IS PRESUMED TO BE ACCURATE, HOWEVER TENANT SHOULD VERIFY PERTINENT INFORMATION PRIOR TO COMMITTING TO A LEASE. ANY FURNITURE OR APPLIANCES SHOWN ON PLAN ARE FOR CONCEPT ONLY AND WILL BE TENANT PROVIDED.



**WAREHOUSE**  
±6,146 SF

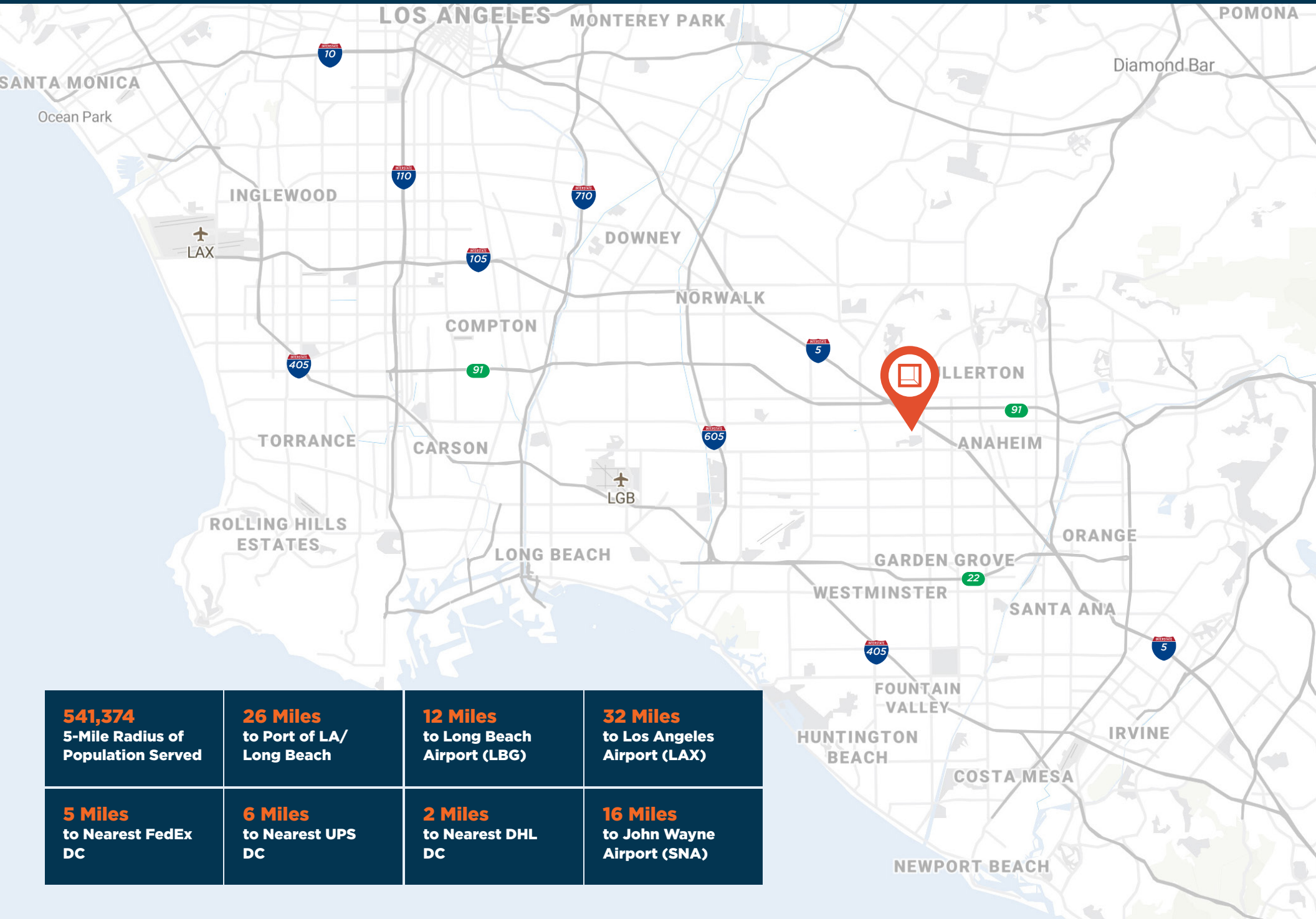
**OFFICE**  
±1,854 SF

**TOTAL**  
±8,000 SF

PLAN LAYOUT SUBJECT TO FIELD CONDITIONS AND MAY DIFFER FROM PLAN AS SHOWN. ALL INFORMATION PRESENTED ON THIS DRAWING IS PRESUMED TO BE ACCURATE, HOWEVER TENANT SHOULD VERIFY PERTINENT INFORMATION PRIOR TO COMMITTING TO A LEASE. ANY FURNITURE OR APPLIANCES SHOWN ON PLAN ARE FOR CONCEPT ONLY AND WILL BE TENANT PROVIDED.

# Location

1134 N. GILBERT ST.



**541,374**  
5-Mile Radius of  
Population Served

**26 Miles**  
to Port of LA/  
Long Beach

**12 Miles**  
to Long Beach  
Airport (LGB)

**32 Miles**  
to Los Angeles  
Airport (LAX)

**5 Miles**  
to Nearest FedEx  
DC

**6 Miles**  
to Nearest UPS  
DC

**2 Miles**  
to Nearest DHL  
DC

**16 Miles**  
to John Wayne  
Airport (SNA)



**Rexford  
Industrial**

## Leasing Contacts

Craig Sullivan

[craig.sullivan@daumcommercial.com](mailto:craig.sullivan@daumcommercial.com)

Direct: 949.242.1710

CA License #01323421



D/AQ Corp. #01129558. Maps Courtesy ©Google & ©Microsoft. Although all information is furnished regarding for sale, rental or financing is from sources deemed reliable, such information has not been verified and no express representation is made nor is any to be implied as to the accuracy thereof, and it is submitted subject to errors, omissions, changes of price, rental or other conditions, prior sale, lease or financing, or withdrawal without notice.