

# SLS Back to School Plan for the 2021-2022 School Year

## 8-17-2021

Our highest priority is the safety of everyone in our SLS community. The following 2021-2022 Back to School Plan provides students, families and employees with current practices and protocols for this school year. The decisions and direction of this plan have been and will continue to take into consideration recommendations by health experts and the CDC. We are looking forward to a GREAT school year as we have the opportunity to provide an exceptional academic and eternal education to our students and their families.

\*\*\*\* PLEASE NOTE: The details included in this document are subject to change as new directives are provided by governing authorities and/or health officials.

Updated CDC guidelines are available at <https://www.cdc.gov/coronavirus/2019-ncov/community/schools-childcare/k-12-guidance.html>

### Face Coverings

- Face coverings are optional. If any individuals wish to wear one, they are more than welcome to do so.

### Health Screening

- Temperatures will no longer be taken when arriving on campus. ***Self-screening before entering the school campus is required.*** If an individual is presenting any signs of illness, they are to remain at home and monitor the symptoms. In the event a student presents signs of illness during the school day, the student will be referred to the school nurse.

### Hygiene

- Proper hand washing will be reviewed in starting the school year. Opportunities for students to wash their hands will be frequently provided. Hand sanitizer stations will be available at various locations throughout school.

### Water Fountains

- We continue to ask students to bring refillable water bottles from home each day. Hands-free water bottle refill stations will be available.

### COVID – 19 Vaccine

- According to the CDC, vaccination is currently the leading public health prevention strategy to end the COVID-19 pandemic, however, the COVID-19 vaccine will NOT be required of students, teachers, staff and visitors on campus.

### Cleaning Procedures

- Frequent cleaning of high touch areas including classrooms, restrooms, offices and the cafeteria will occur throughout the school day.
- The school will be cleaned nightly.
- In the event of an active COVID-19 positive case, we will conduct a “disinfecting fogging” of the affected area(s).

### Visitors on Campus

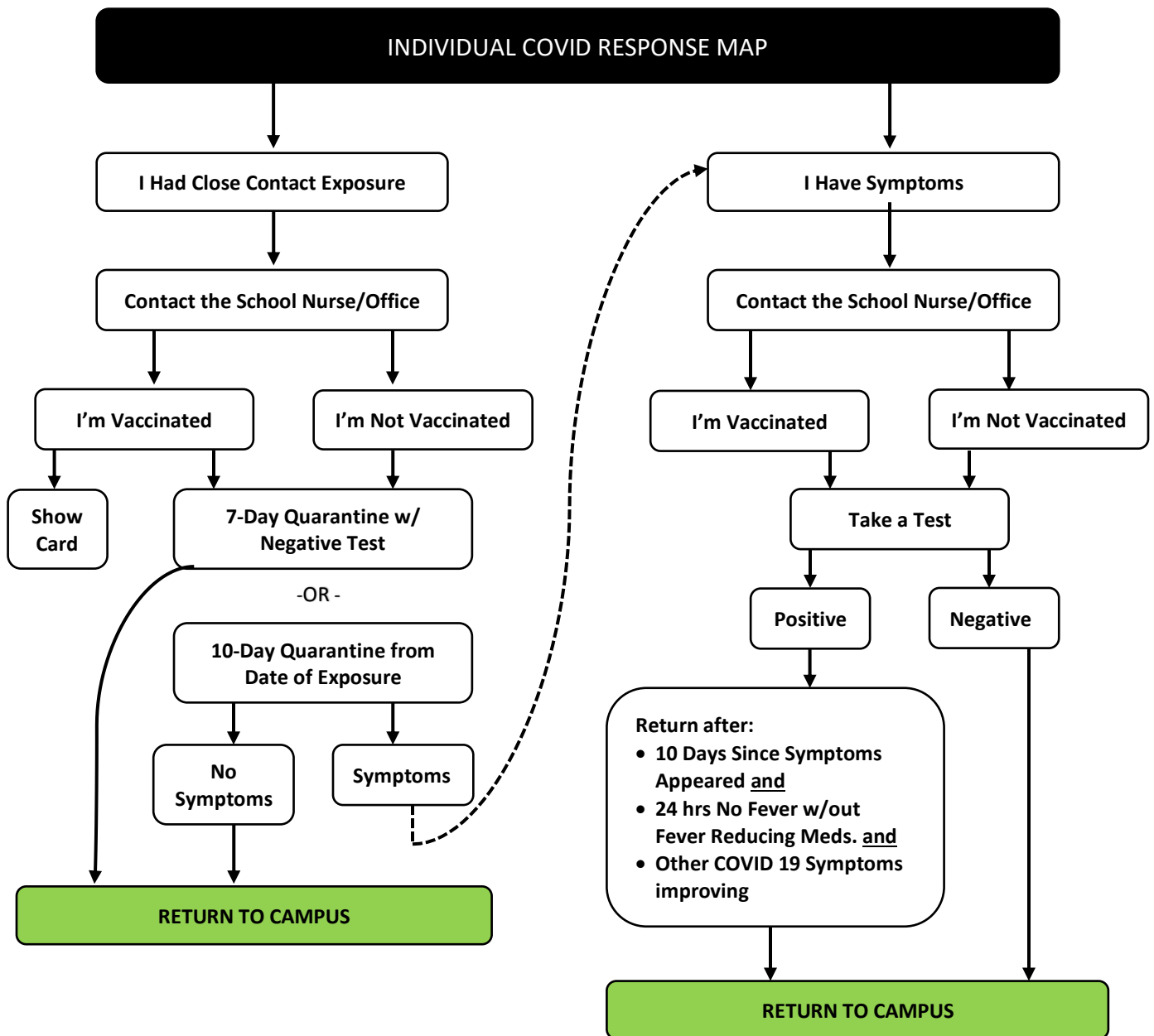
- Visitors are welcome on campus. Those who wish to enter the building during regular school hours are required to check in at the office, conduct a self-screening, and receive the necessary permission for access onto campus. For extracurricular activities outside school hours, visitors are asked to mutually respect one another regarding safety and health by self-screening and noting any symptoms of illness.

August 17, 2021

### Positive COVID-19 Cases

- As required, we will report any known COVID-19 cases to the local health authority.
- Students and staff members who have been fully vaccinated will not be required to quarantine if exposed to a person with COVID-19 and remain asymptomatic.
- Students and staff members who contract COVID-19 will be required to follow CDC guidelines and/or doctor's orders.
- Upon receiving notice of a lab-confirmed COVID-19 case, our school will update our school's COVID-19 dashboard.

### What Should I Do?



# Mitigation Protocol

(Decisions are made with the best information at the time and are subject to change with limited notice.)

## **LEVEL 1 (Normal)**

### Conditions

- COVID-19 vaccines are widely available for children and adults
- COVID-19 is endemic in the United States

### School

- Face coverings are optional
- Self-screening required before coming onto campus
- No restrictions for visitors or school activities
- Contact tracing is suspended
- Monitor community health trends
- Maintain cleaning protocols

## **LEVEL 2 (Monitoring)**

### Conditions

- COVID-19 vaccines are widely available for children and adults
- Increased number of absence students due to illness
- COVID-19 active case rate is below 1% at the school

### School

- Face coverings are optional
- Self-screening required before coming onto campus
- No restrictions for visitors or school activities
- Monitor community health trends
- Maintain cleaning protocols

## **LEVEL 3 (Mitigation)**

### Conditions

- School absenteeism rate due to illness continues to increase
- Community outbreak of COVID-19, variant, or other infectious virus

### School

- Increase mitigation strategies until attendance rate has increased by at least 5% for two weeks
- Highly encourage face coverings when indoors
- Self-screening required before coming onto campus
- Building may close up to two days for deep cleaning
- Extracurricular and co-curricular activities continue with health protocols in place
- Visitor access restricted
- Increase illness prevention communication

#### **LEVEL 4 (Modified Operations)**

##### Conditions

- Local or state health authorities issue health orders which may impact school operations based on resurgence of COVID-19, variant, or another infectious virus.

##### School

- Implement health mitigation strategies (i.e. face coverings, social distancing, increased cleaning, etc.)
- Self-screening required before coming onto campus
- Evaluate temporary remote learning
- Daily staff and student health screening required prior to entering school
- Visitor access restricted
- Extracurricular and co-curricular activities may be restricted or canceled

#### **LEVEL 5 (School Closure)**

##### Conditions

- Governor or local health authority order schools closed based on resurgence of COVID-19, variant, or another infectious virus

##### School

- All students and staff move to remote only learning
- All auxiliary areas such as playgrounds and athletic fields are closed
- All activities are cancelled